



SOUTHRIDGE

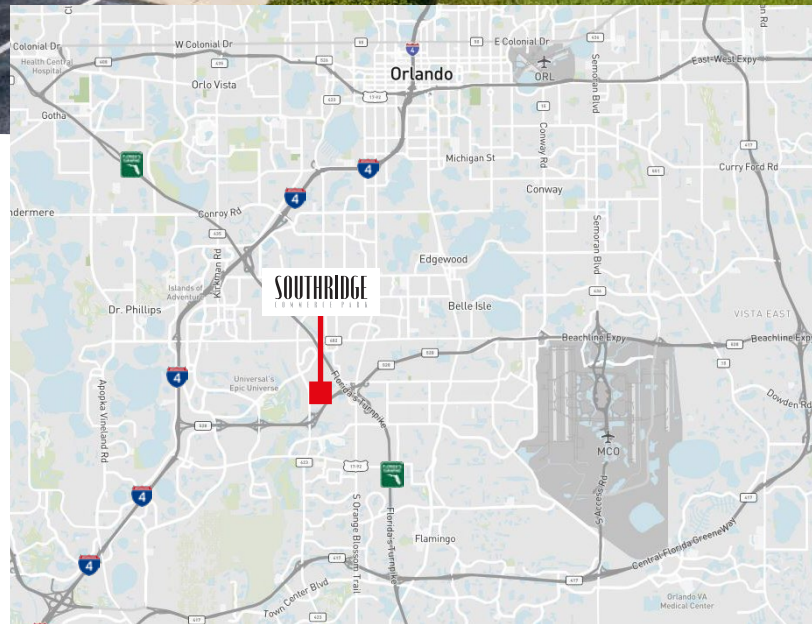
COMMERCIAL PARK



Southridge Commerce Park VI, Suite 100

9400 Southridge Park Court, Orlando, FL

- Building Size: 80,750 s.f.
- Space Available: 13,460 s.f.
- Total office space: 1,322 s.f.
- (3) 9' x 10' dock-high doors
- (1) 12' x 14' ramp door
- 24' minimum clear height
- Electrical 3 phase power and Class IV sprinklers
- Zoned I-4
- 1.5/1,000 s.f. parking ratio
- Immediate access to John Young Pkwy, Orange Blossom Trail (US 441), and the SR 528-Florida Turnpike interchange
- Minutes from Interstate 4
- Available August 1, 2026
- Lease rate: Please call for pricing
- Estimated 2026 CAM: \$3.26/s.f.



Owned by

EASTGROUP
PROPERTIES

Leased by

JLL

For additional information, please contact:

Bobby Isola, SIOR, CCIM
+1 407 930 1804
 bobby.isola@jll.com
 Jones Lang LaSalle Brokerage, Inc.

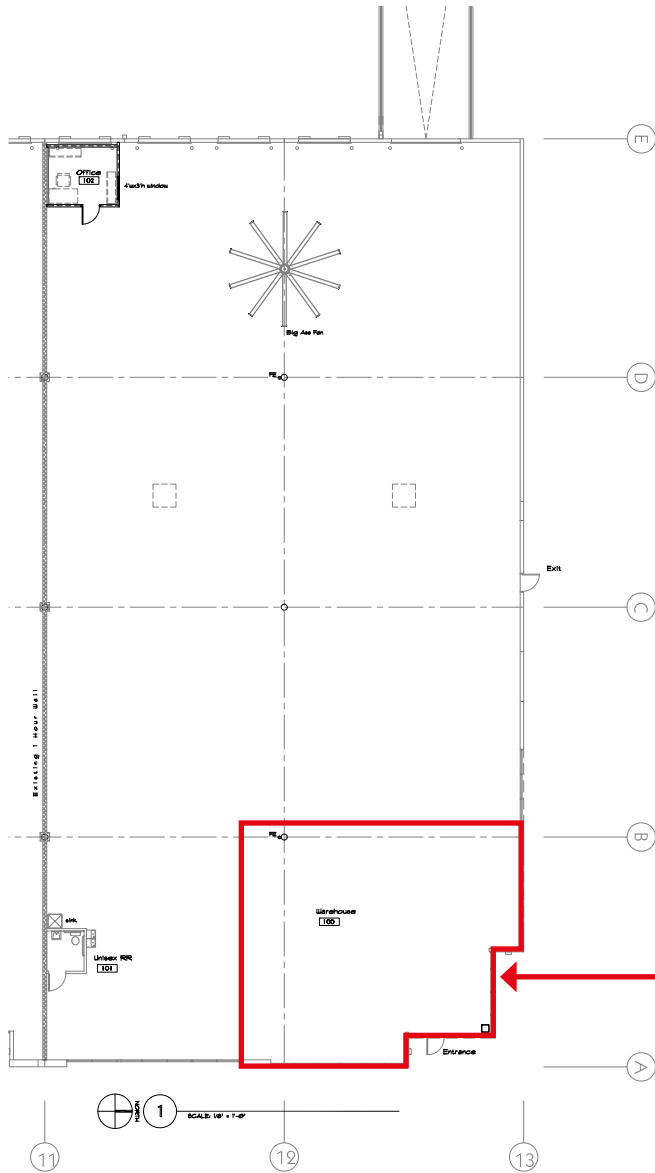
Matt Sullivan, SIOR, CCIM
+1 407 930 1802
 matt.sullivan@jll.com
 Jones Lang LaSalle Brokerage, Inc.

Cameron Montgomery
+1 407 473 4906
 cameron.montgomery@jll.com
 Jones Lang LaSalle Brokerage, Inc.

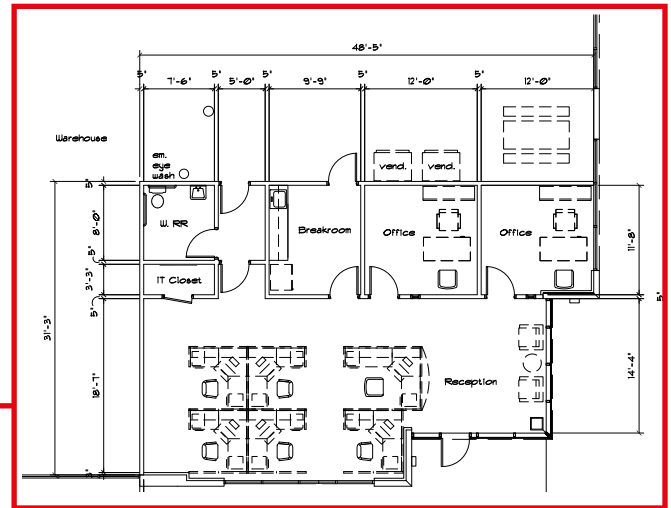
Southridge Commerce Park VI, Suite 100

9400 Southridge Park Court, Orlando, FL

Available: 13,460 s.f.



Office: 1,322 s.f.



For additional information, please contact:

Bobby Isola, SIOR, CCIM
+1 407 930 1804
bobby.isola@jll.com
Jones Lang LaSalle Brokerage, Inc.

Matt Sullivan, SIOR, CCIM
+1 407 930 1802
matt.sullivan@jll.com
Jones Lang LaSalle Brokerage, Inc.

Cameron Montgomery
+1 407 473 4906
cameron.montgomery@jll.com
Jones Lang LaSalle Brokerage, Inc.

Owned by



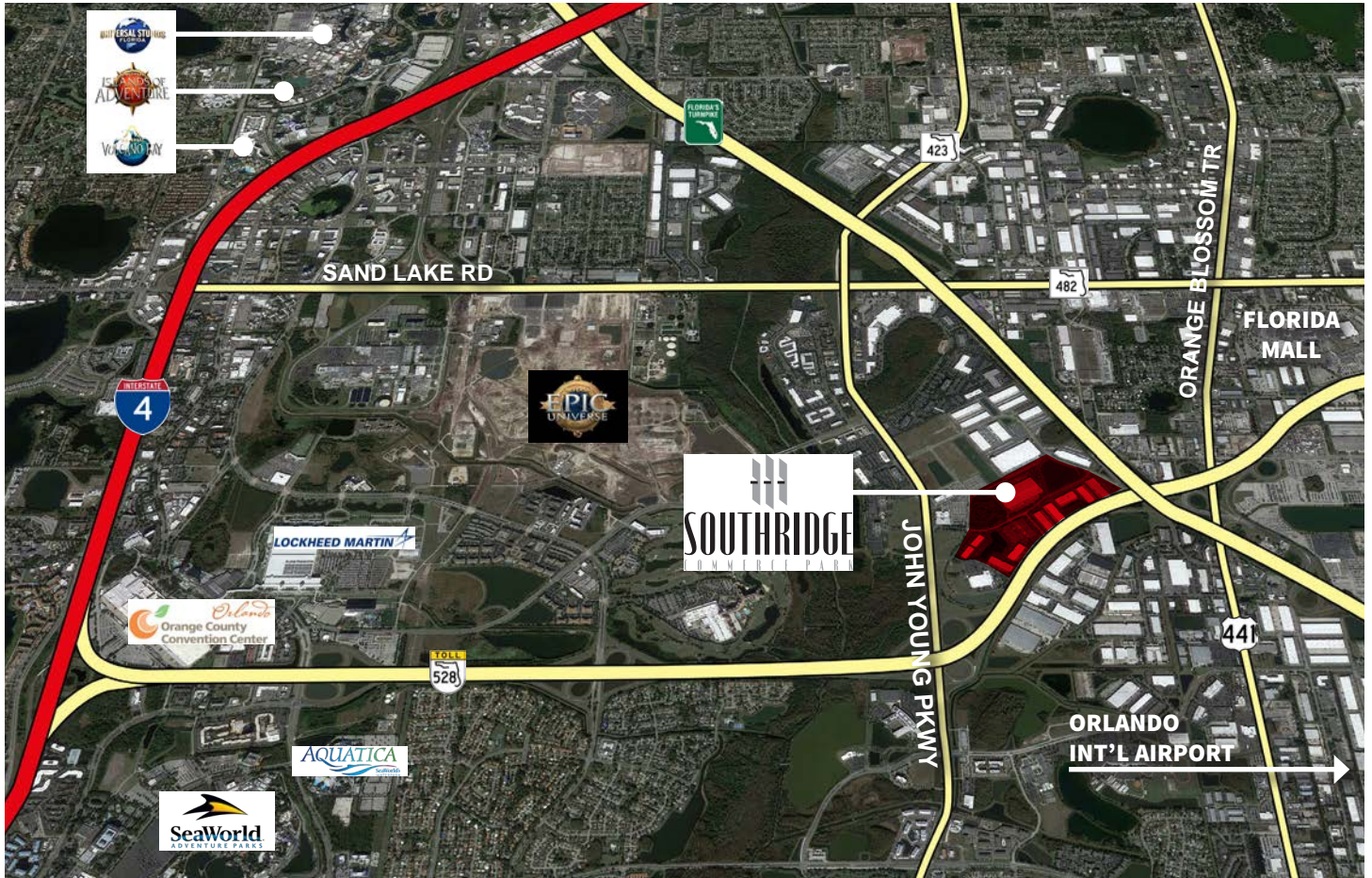
Leased by



Southridge Commerce Park VI, Suite 100

9400 Southridge Park Court, Orlando, FL

Location



Southridge Commerce Park is situated in southeast Orange County just minutes from the Orlando International Airport with immediate access to John Young Parkway, Orange Blossom Tr (US 441), State Road 528 (Beachline Expwy), and Florida's Turnpike. Nearby amenities include Orlando International Airport, Florida Mall, Universal Orlando including the new EPIC Universe opening in 2025, Sea World theme parks, Orange County Convention Center, and the International Drive tourist corridor featuring ICON Park and a variety of themed restaurants, shopping and night life venues.

For additional information, please contact:

Bobby Isola, SIOR, CCIM
+1 407 930 1804
bobby.isola@jll.com
Jones Lang LaSalle Brokerage, Inc.

Matt Sullivan, SIOR, CCIM
+1 407 930 1802
matt.sullivan@jll.com
Jones Lang LaSalle Brokerage, Inc.

Cameron Montgomery
+1 407 473 4906
cameron.montgomery@jll.com
Jones Lang LaSalle Brokerage, Inc.

Owned by

EASTGROUP
PROPERTIES

Leased by

JLL

Although information has been obtained from sources deemed reliable, Owner, Jones Lang LaSalle, and/or their representatives, brokers or agents make no guarantees as to the accuracy of the information contained herein, and offer the Property without express or implied warranties of any kind. The Property may be withdrawn without notice. ©2026. Jones Lang LaSalle Brokerage, Inc., a licensed real estate broker. All rights reserved.