

# OFFICE SUITES FOR LEASE

## SHERMAN OAKS ATRIUM

### 15315 Magnolia Blvd, Sherman Oaks



#### FEATURES

- Beautiful Landscaped Atrium
- Outdoor Patio
- Subterranean Parking
- Excellent Street Parking
- Flexible After-Hours HVAC
- Easy Access to 405 & 101 Freeways

#### PARKING *(per stall)*

\$180 per month Tandem Reserved (\$90 per car)

\$130 per month Single Reserved

2/1,000 SF

#### LEASE RATE

\$2.15 PSF FSG

**\$2.00 PSF BROKER BONUS**  
**\$2.00 PSF TENANT MOVING ALLOWANCE**  
**\*3+ YEAR LEASES**

#### AVAILABLE

SUITE	SIZE	COMMENTS
101	2,462 SF	
110	2,413 SF	Contiguous up to 4,977 SF
114	1,094 SF	Contiguous up to 4,977 SF
118	1,470 SF	Contiguous up to 4,977 SF
111	685 SF	
115	1,029 SF	
120	2,349 SF	
201	3,188 SF	Contiguous up to 4,097 SF
203	909 SF	Contiguous up to 4,097 SF
215	768 SF	
225	3,329 SF	Contiguous up to 6,029 SF
226	2,700 SF	Contiguous up to 6,029 SF
302	2,399 SF	
208	1,385 SF	
310	2,054 SF	Contiguous up to 6,837 SF
320	3,018 SF	Contiguous up to 6,837 SF
322	1,765 SF	Contiguous up to 6,837 SF
403	1,676 SF	

For more information please contact:

**Darren Casamassima**  
 Principal  
 818.933.0303  
 dc@lee-re.com  
 DRE #01425638

**Scott Romick**  
 Principal  
 818.933.0305  
 sromick@lee-re.com  
 DRE #01323527



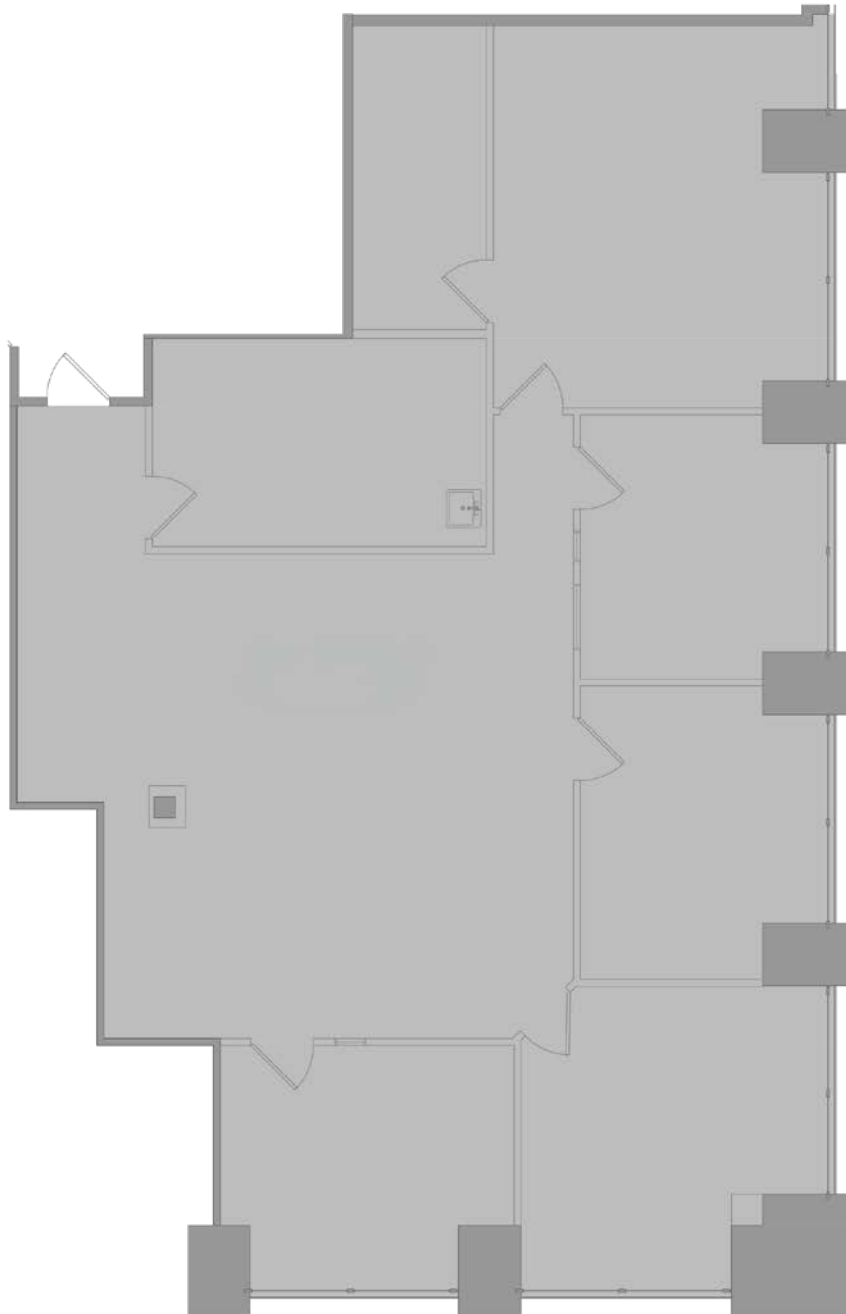
Lee & Associates® - LA North/Ventura, Inc. • Corporate ID #01191898  
 A Member of the Lee & Associates® Group of Companies  
 15060 Ventura Blvd., Suite 100 • Sherman Oaks, CA 91403  
 P:818.986.9800 F:818.933.0405 • www.lee.lanorth.com

All information furnished regarding the property is from sources deemed reliable, but no warranty or representation is made as to the accuracy thereof. This information is submitted subject to errors, omissions, change of price or terms, prior sale or lease, or withdrawal without notice. No liability of any kind is to be imposed on the broker herein.

# Sherman Oaks Atrium

## 15315 Magnolia Blvd, Sherman Oaks

SUITE 101  
2,462 SF



NOT TO SCALE

For more information please contact:

**Darren Casamassima**  
Principal  
818.933.0303  
dc@lee-re.com  
DRE #01425638

**Scott Romick**  
Principal  
818.933.0305  
sromick@lee-re.com  
DRE #01323527



Lee & Associates® - LA NorthVentura, Inc. • Corporate ID #01191898  
A Member of the Lee & Associates® Group of Companies  
15060 Ventura Blvd., Suite 100 • Sherman Oaks, CA 91403  
P:818.986.9800 F:818.933.0405 • www.leeandnorth.com

All information furnished regarding the property is from sources deemed reliable, but no warranty or representation is made as to the accuracy thereof. This information is submitted subject to errors, omissions, change of price or terms, prior sale or lease, or withdrawal without notice. No liability of any kind is to be imposed on the broker herein.

# Sherman Oaks Atrium

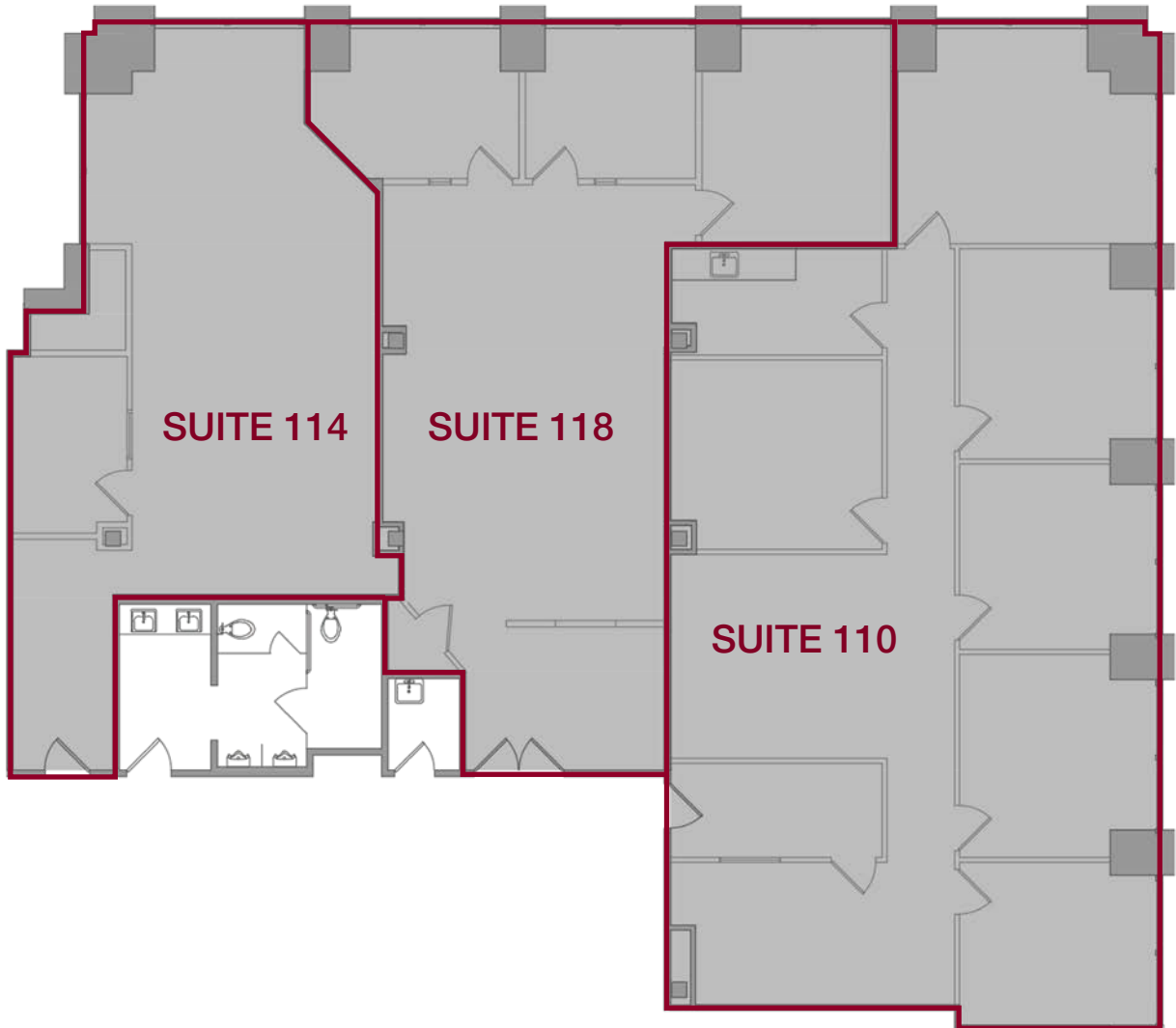
## 15315 Magnolia Blvd, Sherman Oaks

SUITE 114

SUITE 118

SUITE 110

CONTIGUOUS UP TO 4,977 SF



NOT TO SCALE

For more information please contact:

**Darren Casamassima**  
Principal  
818.933.0303  
dc@lee-re.com  
DRE #01425638

**Scott Romick**  
Principal  
818.933.0305  
sromick@lee-re.com  
DRE #01323527



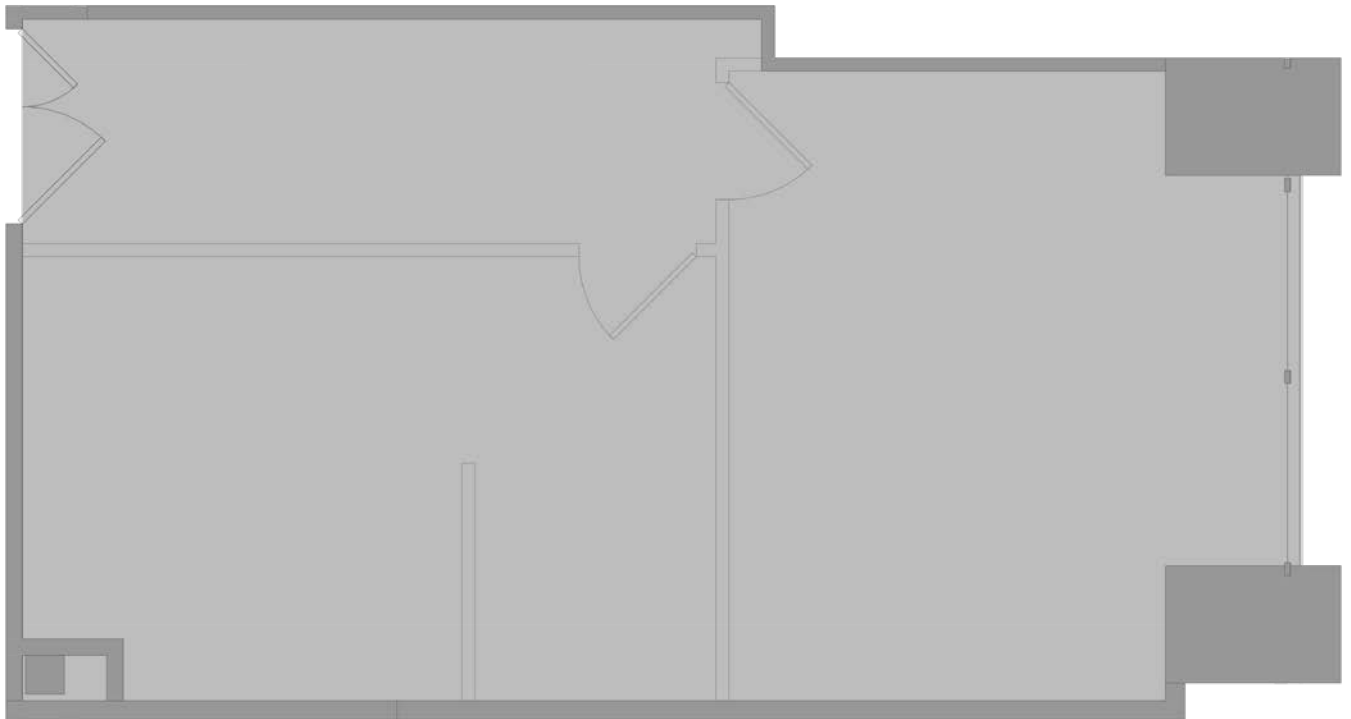
Lee & Associates® - LA NorthVentura, Inc. • Corporate ID #01191898  
A Member of the Lee & Associates® Group of Companies  
15060 Ventura Blvd., Suite 100 • Sherman Oaks, CA 91403  
P:818.986.9800 F:818.933.0405 • www.leeandnorth.com

All information furnished regarding the property is from sources deemed reliable, but no warranty or representation is made as to the accuracy thereof. This information is submitted subject to errors, omissions, change of price or terms, prior sale or lease, or withdrawal without notice. No liability of any kind is to be imposed on the broker herein.

# Sherman Oaks Atrium

## 15315 Magnolia Blvd, Sherman Oaks

SUITE 111  
685 SF



NOT TO SCALE

For more information please contact:

**Darren Casamassima**  
Principal  
818.933.0303  
dc@lee-re.com  
DRE #01425638

**Scott Romick**  
Principal  
818.933.0305  
sromick@lee-re.com  
DRE #01323527



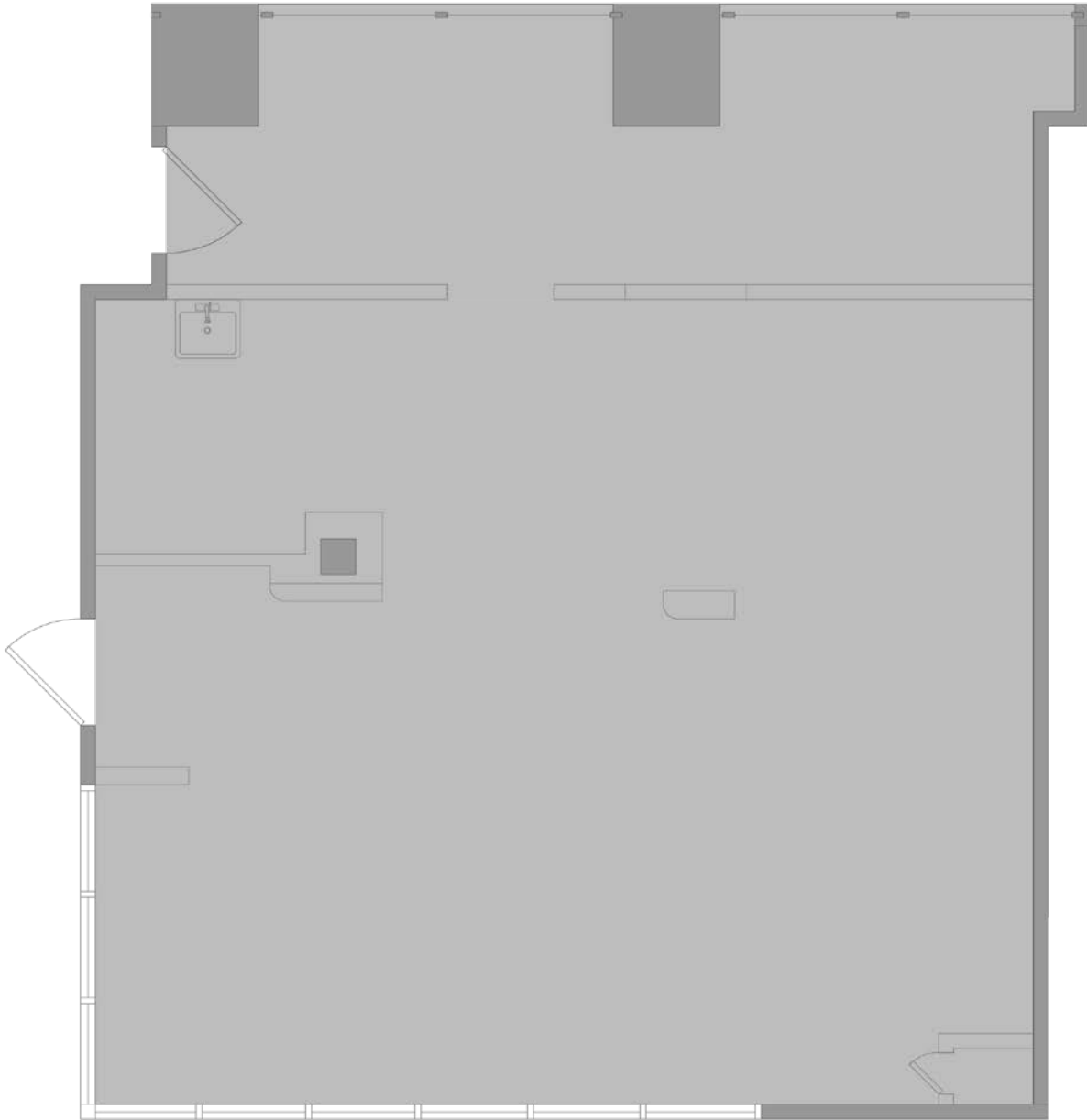
Lee & Associates® - LA NorthVentura, Inc. • Corporate ID #01191898  
A Member of the Lee & Associates® Group of Companies  
15060 Ventura Blvd., Suite 100 • Sherman Oaks, CA 91403  
P:818.986.9800 F:818.933.0405 • www.leeandnorth.com

All information furnished regarding the property is from sources deemed reliable, but no warranty or representation is made as to the accuracy thereof. This information is submitted subject to errors, omissions, change of price or terms, prior sale or lease, or withdrawal without notice. No liability of any kind is to be imposed on the broker herein.

# Sherman Oaks Atrium

## 15315 Magnolia Blvd, Sherman Oaks

SUITE 115  
1,029 SF



NOT TO SCALE

For more information please contact:

**Darren Casamassima**  
Principal  
818.933.0303  
dc@lee-re.com  
DRE #01425638

**Scott Romick**  
Principal  
818.933.0305  
sromick@lee-re.com  
DRE #01323527



Lee & Associates® - LA NorthVentura, Inc. • Corporate ID #01191898  
A Member of the Lee & Associates® Group of Companies  
15060 Ventura Blvd., Suite 100 • Sherman Oaks, CA 91403  
P:818.986.9800 F:818.933.0405 • www.leeandnorth.com

All information furnished regarding the property is from sources deemed reliable, but no warranty or representation is made as to the accuracy thereof. This information is submitted subject to errors, omissions, change of price or terms, prior sale or lease, or withdrawal without notice. No liability of any kind is to be imposed on the broker herein.

# Sherman Oaks Atrium

## 15315 Magnolia Blvd, Sherman Oaks

SUITE 120  
2,349 SF



NOT TO SCALE

For more information please contact:

**Darren Casamassima**  
Principal  
818.933.0303  
dc@lee-re.com  
DRE #01425638

**Scott Romick**  
Principal  
818.933.0305  
sromick@lee-re.com  
DRE #01323527



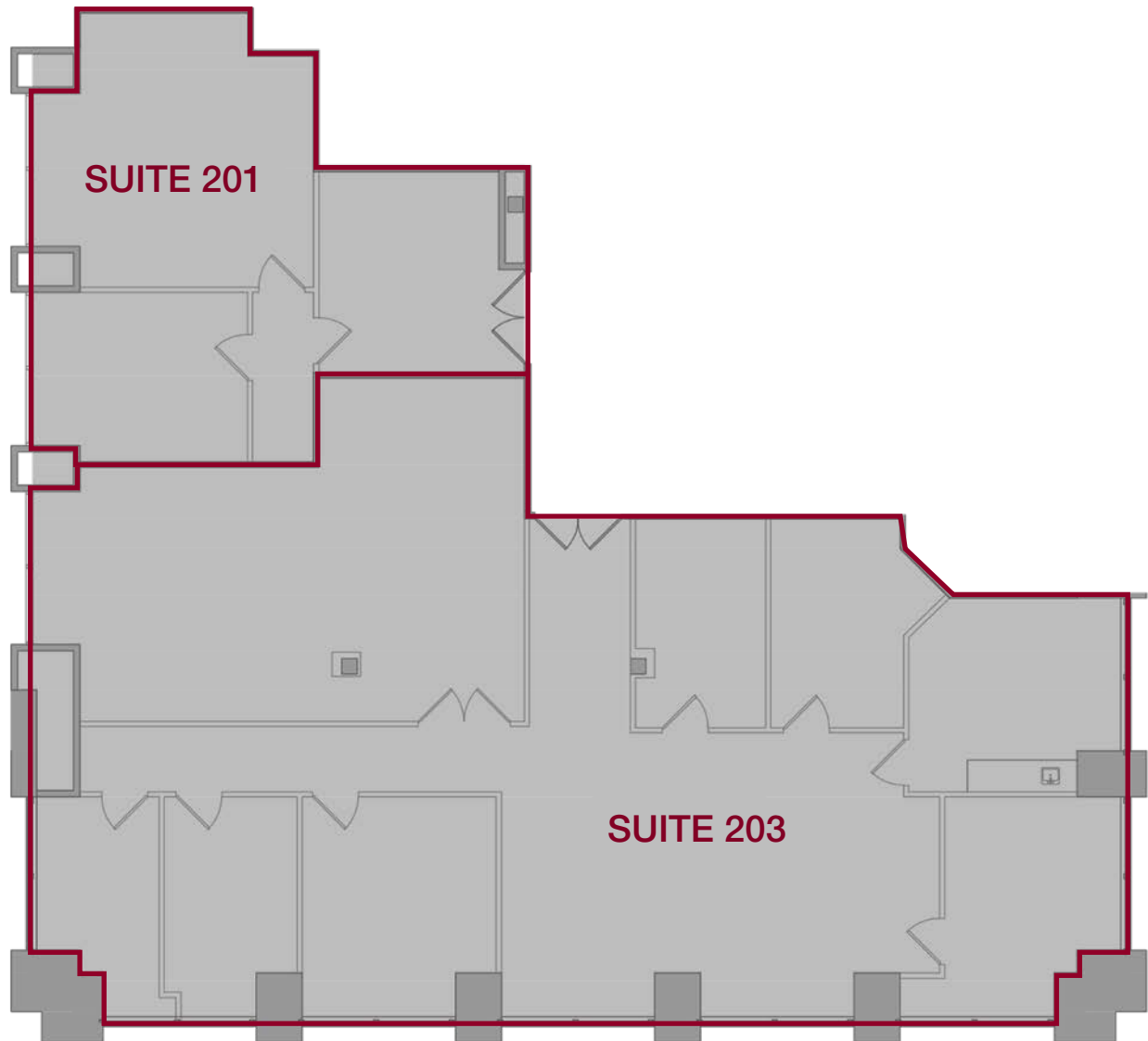
Lee & Associates® - LA NorthVentura, Inc. • Corporate ID #01191898  
A Member of the Lee & Associates® Group of Companies  
15060 Ventura Blvd., Suite 100 • Sherman Oaks, CA 91403  
P:818.986.9800 F:818.933.0405 • www.leeandnorth.com

All information furnished regarding the property is from sources deemed reliable, but no warranty or representation is made as to the accuracy thereof. This information is submitted subject to errors, omissions, change of price or terms, prior sale or lease, or withdrawal without notice. No liability of any kind is to be imposed on the broker herein.

# Sherman Oaks Atrium

## 15315 Magnolia Blvd, Sherman Oaks

SUITE 201      SUITE 203  
CONTIGUOUS UP TO 4,097 SF



NOT TO SCALE

For more information please contact:

**Darren Casamassima**  
Principal  
818.933.0303  
dc@lee-re.com  
DRE #01425638

**Scott Romick**  
Principal  
818.933.0305  
sromick@lee-re.com  
DRE #01323527



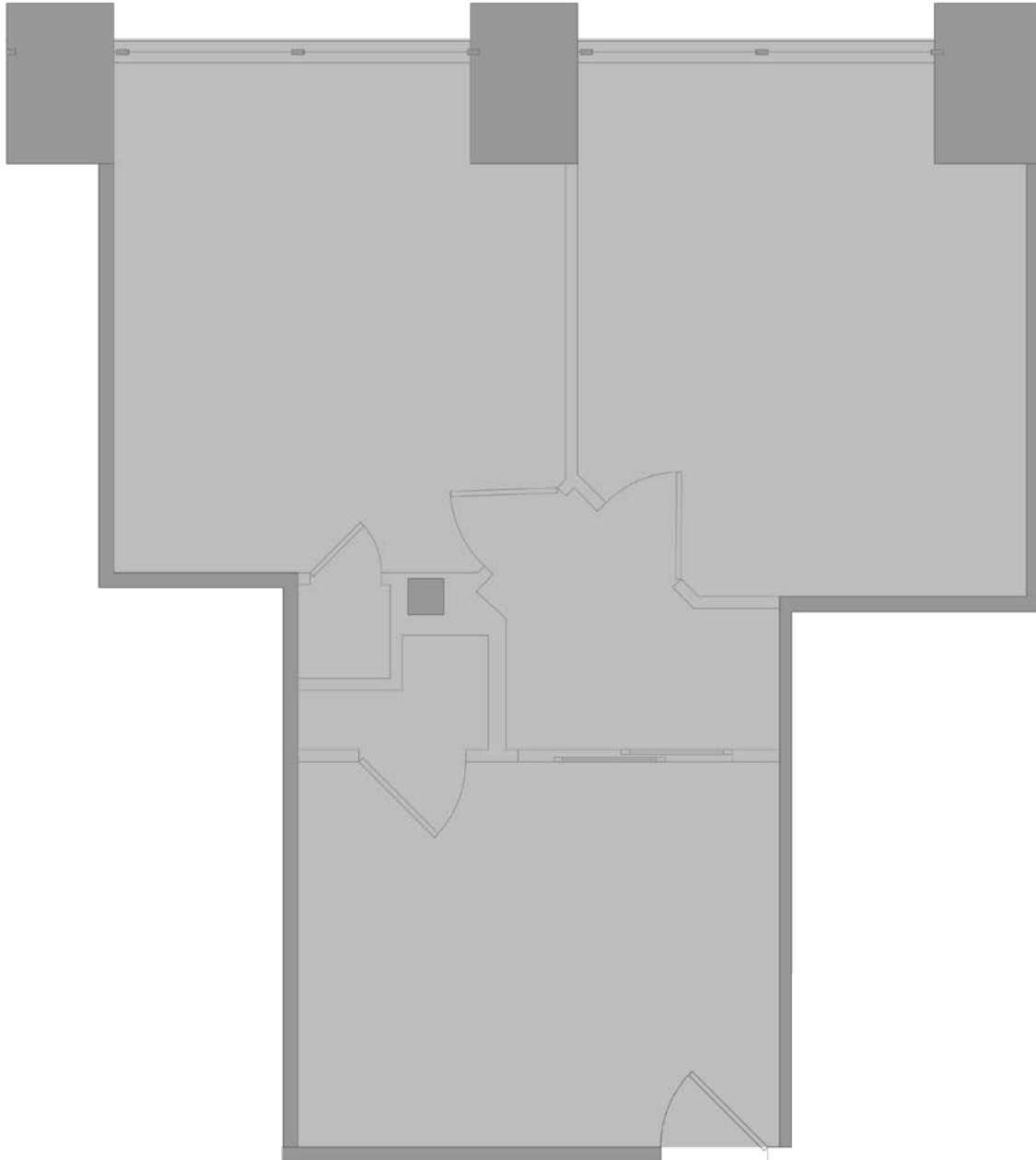
Lee & Associates® - LA NorthVentura, Inc. • Corporate ID #01191898  
A Member of the Lee & Associates® Group of Companies  
15060 Ventura Blvd., Suite 100 • Sherman Oaks, CA 91403  
P:818.986.9800 F:818.933.0405 • www.leeandnorth.com

All information furnished regarding the property is from sources deemed reliable, but no warranty or representation is made as to the accuracy thereof. This information is submitted subject to errors, omissions, change of price or terms, prior sale or lease, or withdrawal without notice. No liability of any kind is to be imposed on the broker herein.

# Sherman Oaks Atrium

## 15315 Magnolia Blvd, Sherman Oaks

SUITE 215  
768 SF



NOT TO SCALE

For more information please contact:

**Darren Casamassima**  
Principal  
818.933.0303  
dc@lee-re.com  
DRE #01425638

**Scott Romick**  
Principal  
818.933.0305  
sromick@lee-re.com  
DRE #01323527



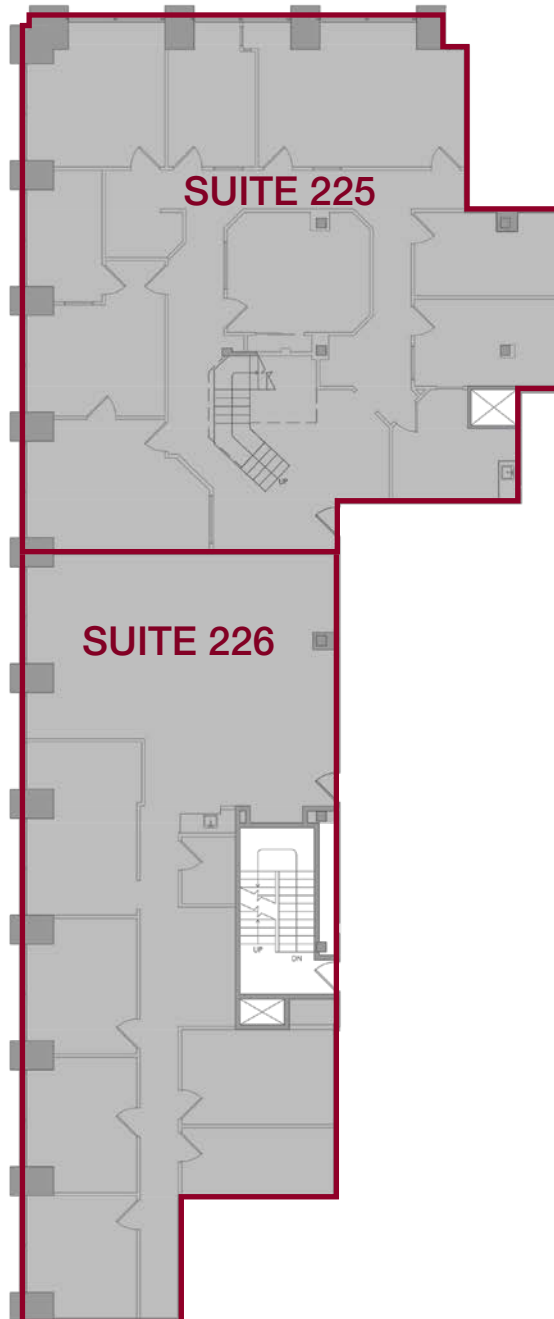
Lee & Associates® - LA North Ventura, Inc. • Corporate ID #01191898  
A Member of the Lee & Associates® Group of Companies  
15060 Ventura Blvd., Suite 100 • Sherman Oaks, CA 91403  
P:818.986.9800 F:818.933.0405 • www.leeandnorth.com

All information furnished regarding the property is from sources deemed reliable, but no warranty or representation is made as to the accuracy thereof. This information is submitted subject to errors, omissions, change of price or terms, prior sale or lease, or withdrawal without notice. No liability of any kind is to be imposed on the broker herein.

# Sherman Oaks Atrium

## 15315 Magnolia Blvd, Sherman Oaks

SUITE 225 SUITE 226  
CONTIGUOUS UP TO 6,029 SF



NOT TO SCALE

For more information please contact:

**Darren Casamassima**  
Principal  
818.933.0303  
dc@lee-re.com  
DRE #01425638

**Scott Romick**  
Principal  
818.933.0305  
sromick@lee-re.com  
DRE #01323527



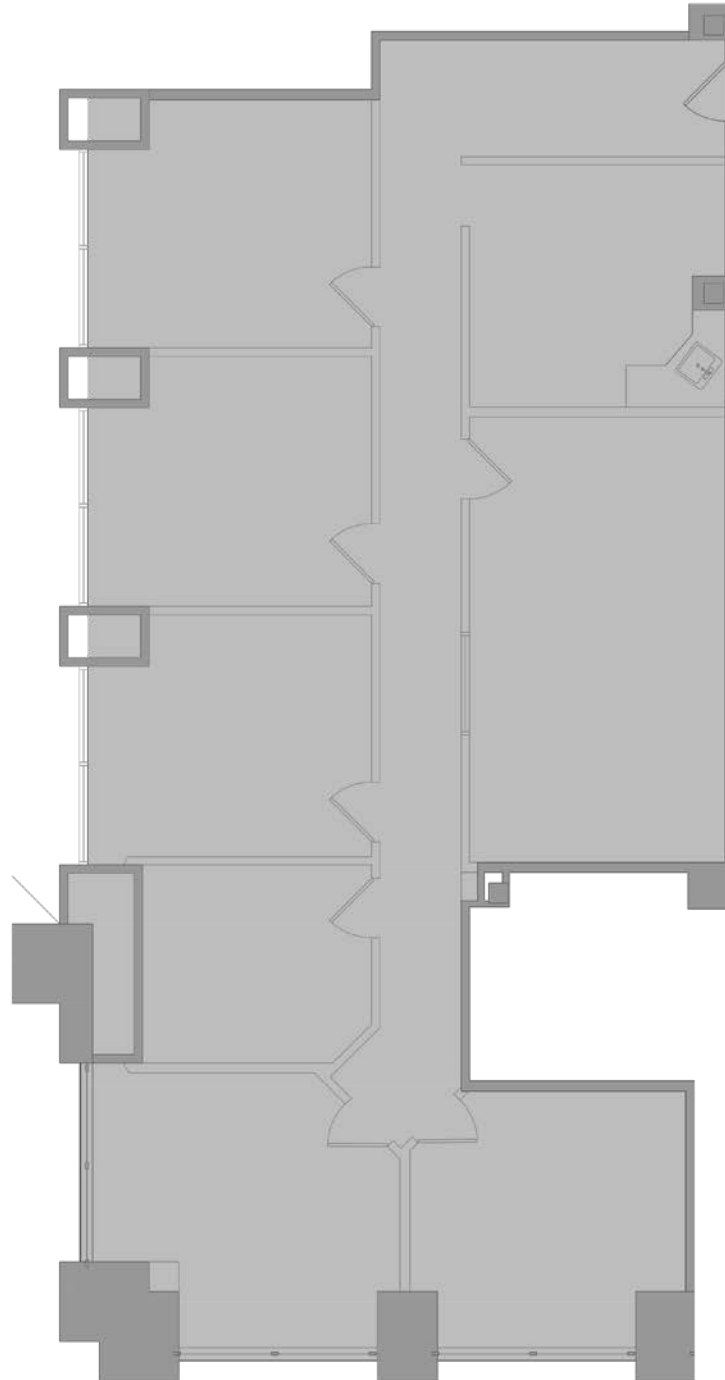
Lee & Associates® - LA NorthVentura, Inc. • Corporate ID #01191898  
A Member of the Lee & Associates® Group of Companies  
15060 Ventura Blvd., Suite 100 • Sherman Oaks, CA 91403  
P:818.986.9800 F:818.933.0405 • www.leeandnorth.com

All information furnished regarding the property is from sources deemed reliable, but no warranty or representation is made as to the accuracy thereof. This information is submitted subject to errors, omissions, change of price or terms, prior sale or lease, or withdrawal without notice. No liability of any kind is to be imposed on the broker herein.

# Sherman Oaks Atrium

## 15315 Magnolia Blvd, Sherman Oaks

SUITE 302  
2,399 SF



NOT TO SCALE

For more information please contact:

**Darren Casamassima**  
Principal  
818.933.0303  
dc@lee-re.com  
DRE #01425638

**Scott Romick**  
Principal  
818.933.0305  
sromick@lee-re.com  
DRE #01323527



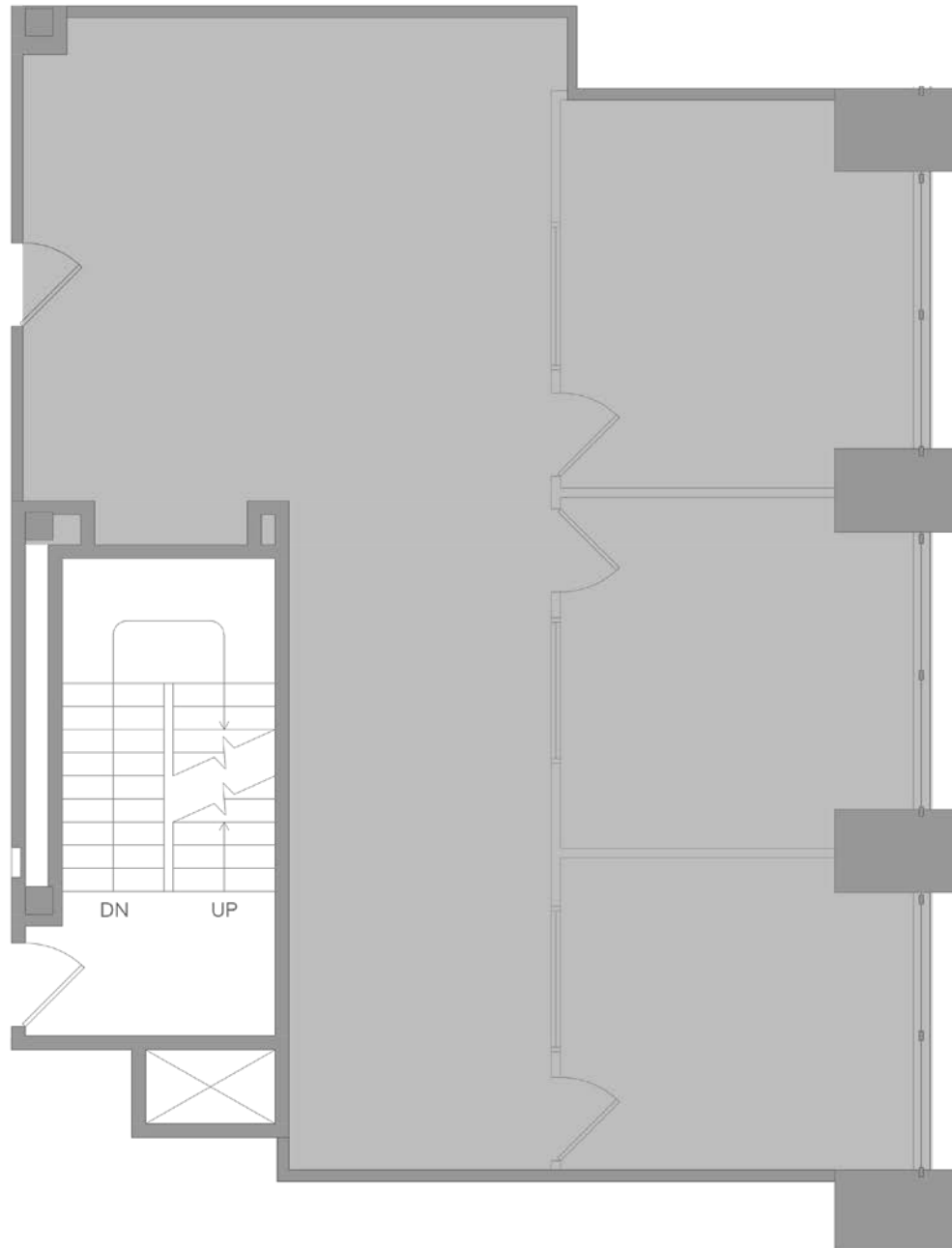
Lee & Associates® - LA NorthVentura, Inc. • Corporate ID #01191898  
A Member of the Lee & Associates® Group of Companies  
15060 Ventura Blvd., Suite 100 • Sherman Oaks, CA 91403  
P:818.986.9800 F:818.933.0405 • www.leeandnorth.com

All information furnished regarding the property is from sources deemed reliable, but no warranty or representation is made as to the accuracy thereof. This information is submitted subject to errors, omissions, change of price or terms, prior sale or lease, or withdrawal without notice. No liability of any kind is to be imposed on the broker herein.

# Sherman Oaks Atrium

## 15315 Magnolia Blvd, Sherman Oaks

SUITE 308  
1,385 SF



NOT TO SCALE

For more information please contact:

**Darren Casamassima**  
Principal  
818.933.0303  
dc@lee-re.com  
DRE #01425638

**Scott Romick**  
Principal  
818.933.0305  
sromick@lee-re.com  
DRE #01323527



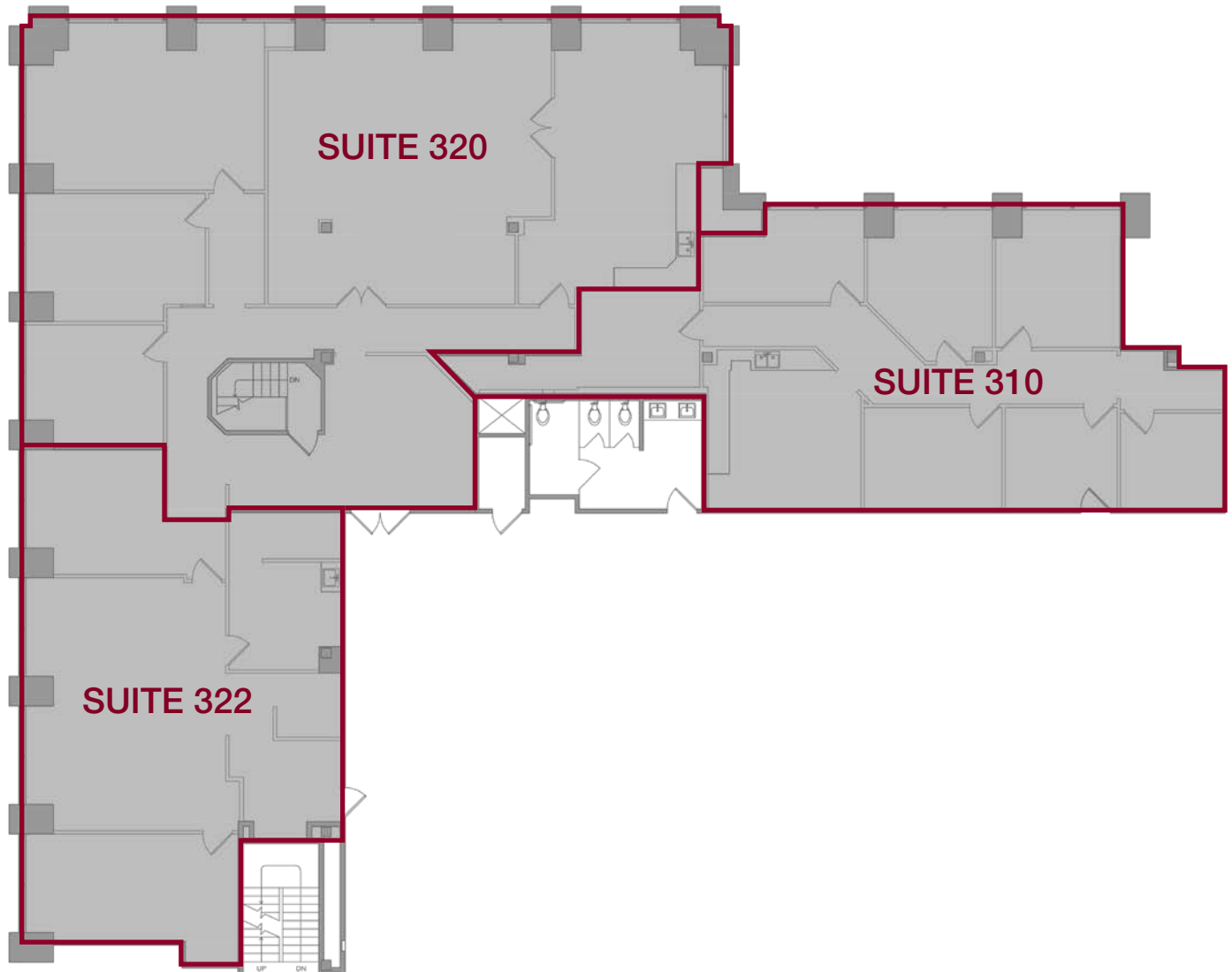
Lee & Associates® - LA NorthVentura, Inc. • Corporate ID #01191898  
A Member of the Lee & Associates® Group of Companies  
15060 Ventura Blvd., Suite 100 • Sherman Oaks, CA 91403  
P:818.986.9800 F:818.933.0405 • www.leeandnorth.com

All information furnished regarding the property is from sources deemed reliable, but no warranty or representation is made as to the accuracy thereof. This information is submitted subject to errors, omissions, change of price or terms, prior sale or lease, or withdrawal without notice. No liability of any kind is to be imposed on the broker herein.

# Sherman Oaks Atrium

## 15315 Magnolia Blvd, Sherman Oaks

SUITE 322      SUITE 320      SUITE 310  
CONTIGUOUS UP TO 6,837 SF



NOT TO SCALE

For more information please contact:

**Darren Casamassima**  
Principal  
818.933.0303  
dc@lee-re.com  
DRE #01425638

**Scott Romick**  
Principal  
818.933.0305  
sromick@lee-re.com  
DRE #01323527



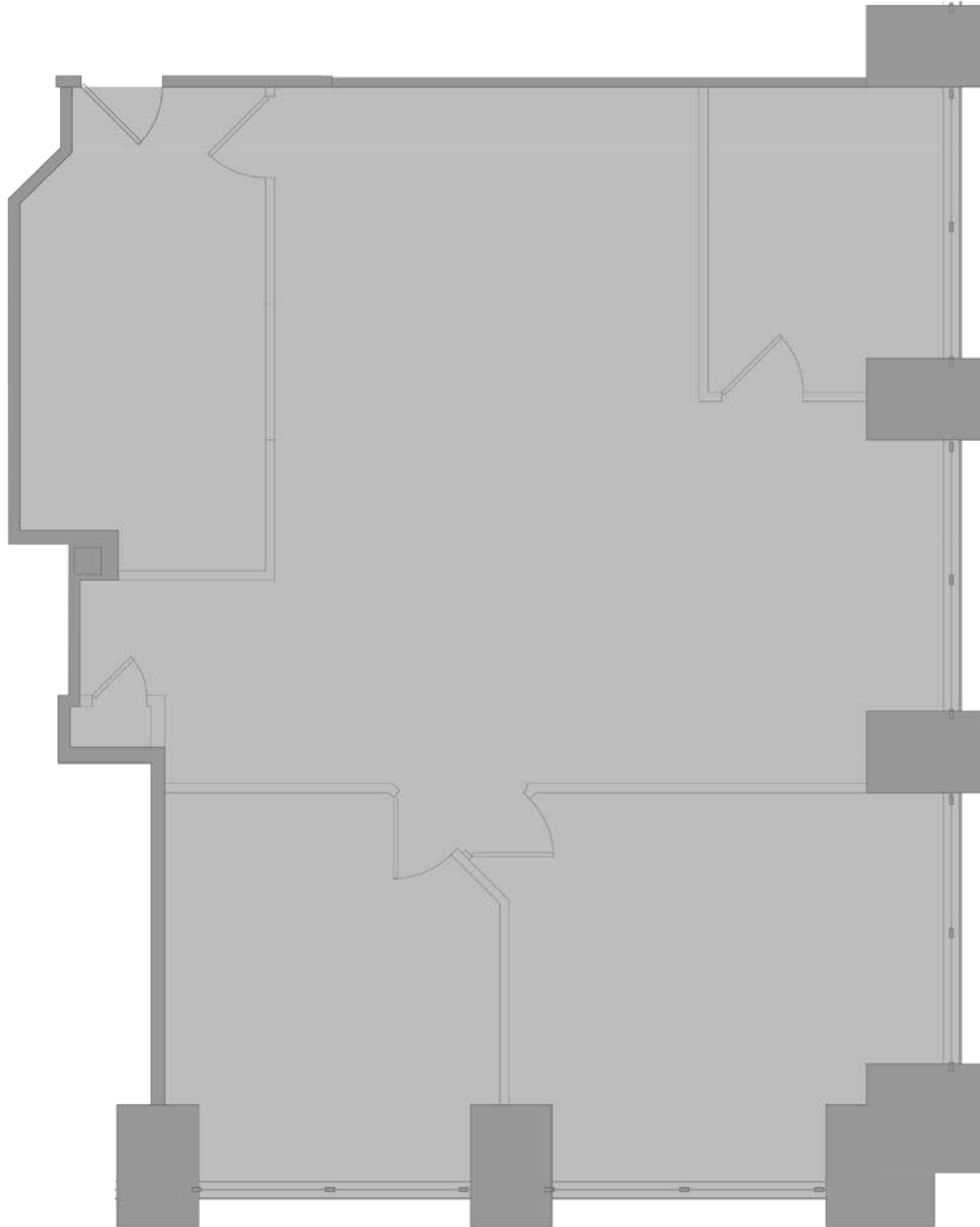
Lee & Associates® - LA NorthVentura, Inc. • Corporate ID #01191898  
A Member of the Lee & Associates® Group of Companies  
15060 Ventura Blvd., Suite 100 • Sherman Oaks, CA 91403  
P:818.986.9800 F:818.933.0405 • www.leeandnorth.com

All information furnished regarding the property is from sources deemed reliable, but no warranty or representation is made as to the accuracy thereof. This information is submitted subject to errors, omissions, change of price or terms, prior sale or lease, or withdrawal without notice. No liability of any kind is to be imposed on the broker herein.

# Sherman Oaks Atrium

## 15315 Magnolia Blvd, Sherman Oaks

SUITE 403  
1,676 SF



NOT TO SCALE

For more information please contact:

**Darren Casamassima**  
Principal  
818.933.0303  
dc@lee-re.com  
DRE #01425638

**Scott Romick**  
Principal  
818.933.0305  
sromick@lee-re.com  
DRE #01323527



Lee & Associates® - LA North Ventura, Inc. • Corporate ID #01191898  
A Member of the Lee & Associates® Group of Companies  
15060 Ventura Blvd., Suite 100 • Sherman Oaks, CA 91403  
P:818.986.9800 F:818.933.0405 • www.leeandnorth.com

All information furnished regarding the property is from sources deemed reliable, but no warranty or representation is made as to the accuracy thereof. This information is submitted subject to errors, omissions, change of price or terms, prior sale or lease, or withdrawal without notice. No liability of any kind is to be imposed on the broker herein.

# Sherman Oaks Atrium

## 15315 Magnolia Blvd, Sherman Oaks



For more information please contact:

**Darren Casamassima**  
Principal  
818.933.0303  
dc@lee-re.com  
DRE #01425638

**Scott Romick**  
Principal  
818.933.0305  
sromick@lee-re.com  
DRE #01323527



Lee & Associates® - LA North Ventura, Inc. • Corporate ID #01191898  
A Member of the Lee & Associates® Group of Companies  
15060 Ventura Blvd., Suite 100 • Sherman Oaks, CA 91403  
P:818.986.9800 F:818.933.0405 • www.leenorth.com

All information furnished regarding the property is from sources deemed reliable, but no warranty or representation is made as to the accuracy thereof. This information is submitted subject to errors, omissions, change of price or terms, prior sale or lease, or withdrawal without notice. No liability of any kind is to be imposed on the broker herein.