

The logo consists of a stylized, light purple graphic element on the left, resembling a double 'S' or a continuous line that forms a shape similar to the letter 'B'. To the right of this graphic, the words 'BLAYS' and 'HOUSE' are stacked vertically in a clean, white, sans-serif typeface.

BLAYS
HOUSE

Blays House, Wick Road, Egham, Surrey TW20 0HJ





PROFESSIONAL SPACE IN A PEACEFUL SETTING

Building features

Blays House offers high-quality office space in a calm, rural environment close to the Royal Parks, Virginia Water and Savill Gardens.

With excellent access to the M25 and nearby rail links, it combines convenience with tranquillity.

Modern specifications and on-site amenities support day-to-day business needs, while global brands such as OKI and Viatel already call the estate home, making Blays House a proven location for successful businesses.



Air Conditioned Office Space



Full Access Raised Flooring



Suspended Ceiling with Recessed Lighting



Impressive Entrance Hall



Passenger Lift



Exceptional High Quality Glass Partitioning

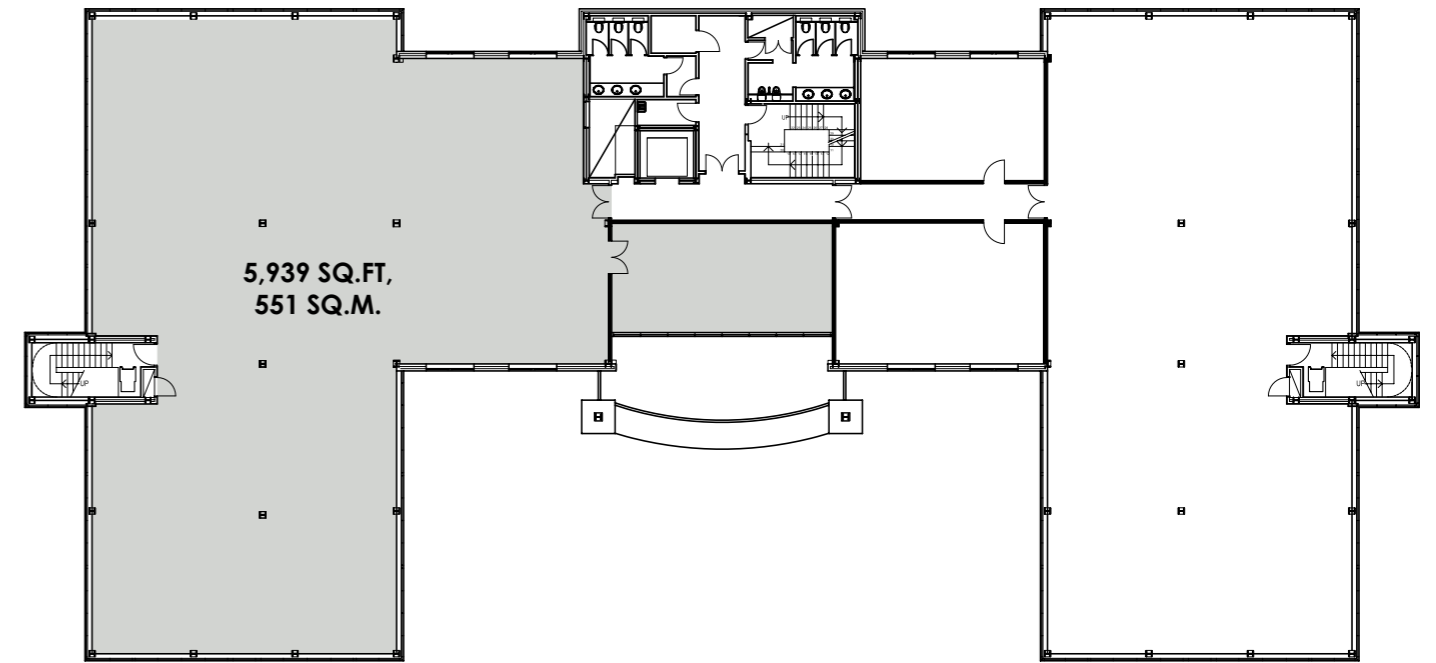


SPACE THAT FITS YOUR BUSINESS

Accommodation schedule

FIRST FLOOR

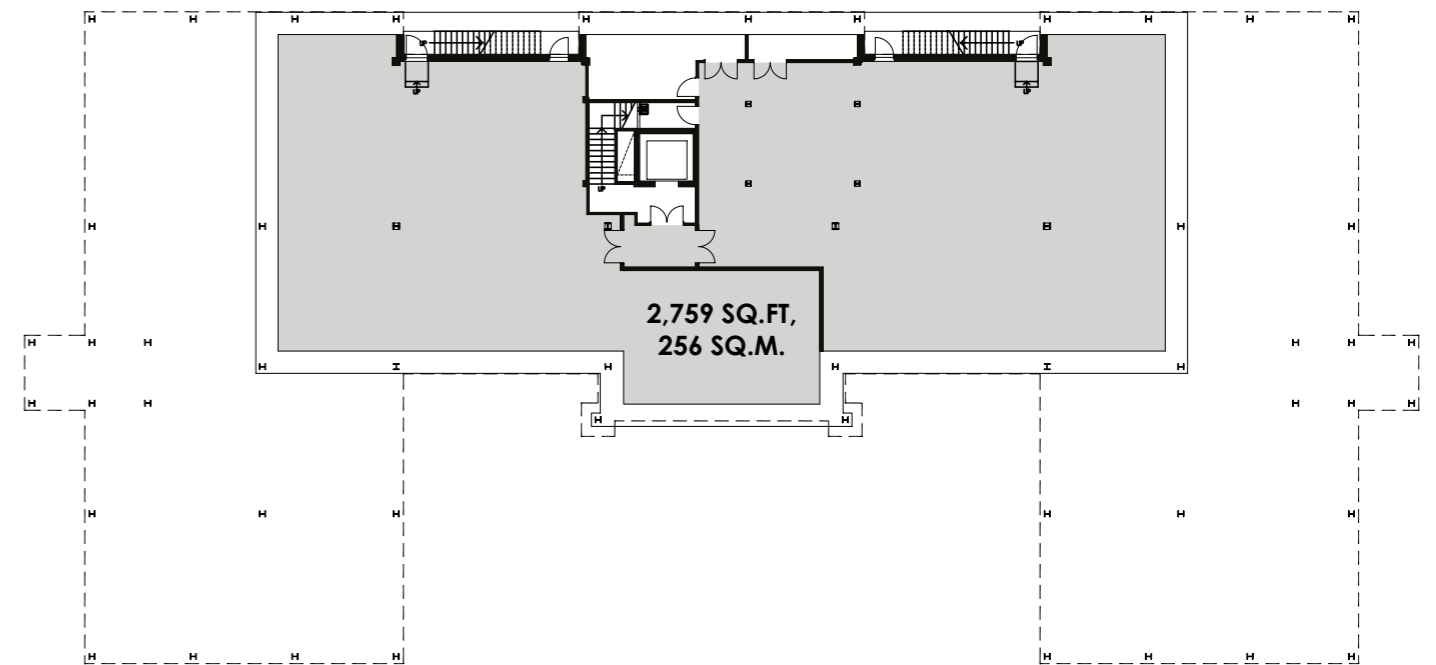
5,939 SQ.FT. Available space including a tea point located in the west wing of the first floor.



FIRST FLOOR

BASEMENT FLOOR

2,759 SQ.FT. Available space occupying the entire basement floor.



BASEMENT FLOOR



BLAYS
HOUSE

SEAMLESSLY LINKED

Travel and commuting

Blays House is conveniently located only 2.5 miles from junction 13 of the M25.

The estate is situated off the A30 and is approximately 2 miles from Egham where there is a regular train service to London Waterloo (41 minutes).

Both Heathrow and Gatwick airports are readily accessible with Heathrow, the world's busiest international airport, being only 8 miles away.



TRAIN TIMES

Staines	6 mins
Feltham	13 mins
Twickenham	18 mins
Richmond	23 mins
Clapham Junction	32 mins
London Waterloo	41 mins



DRIVE TIMES

M25 Junction 13	2 mins
A30 (London Road)	2 mins
Egham Train Station	4 mins
Royal Holloway University	5 mins
Virginia Water Lake	6 mins
Heathrow Airport (LHR)	12 mins
Windsor Castle	15 mins
Ascot Racecourse	15 mins

A PRIME SPOT WITH SPACE TO BREATHE

The surrounding area offers an exceptional mix of amenities and attractions, from Ascot Racecourse and world-renowned golf clubs at Wentworth and Sunningdale to the scenic Virginia Water Lake and Windsor Great Park.

Nearby Windsor is famed for its riverside setting and historic landmarks, including Windsor Castle.

The area is also home to Royal Holloway University, adding to its vibrant character, while Heathrow Airport provides global connectivity just a short distance away.

A wide range of shops, cafés and restaurants can be found in and around Egham and Staines, with other nearby towns including Bracknell and Camberley.





Blays House, Wick Road, Egham, Surrey TW20 0HJ

Orbit
Southern

020 8750 1410
www.orbitsouthern.com

Images are for illustrative purposes only and may not represent the exact office space available.

Developer reserves the right to change the scheme in the future. However, the Vendors / Lessors and Agents of intended as a general outline only, for the guidance of prospective purchasers or tenants, and do not constitute the whole or any part of an offer or contract. (2) They cannot guarantee the accuracy of any description, dimension or other details contained in these Particulars and prospective purchasers or tenants should not rely on them as statements of fact or representation, but must satisfy themselves as to the accuracy of such details. (3) No employee of the Agents has any authority to make or give any representation or warranty, or enter into any contract whatsoever in relation to the property (1025)