

1205-1211 De la Montagne Street, Montreal (Québec)



Lease Terms

Term	5 - 10 Years
Suite 1	2,257 sq. ft.
Suite 2	3,007 sq. ft.
Total Area	5,264 sq. ft.
<small>(Can be combined)</small>	
Semi-Gross Rent	\$65.00
<small>Base year 2026</small>	
Availability	July 2026

Property Details



Commercial spaces located on the ground floor of a high-end apartment building currently under construction



Located on De la Montagne Street between René-Levesque Boulevard West and Sainte-Catherine Street West



10-mins walk to the Bonaventure, Lucien-L'Allier and Guy-Concordia metro stations



Ideal for a café, boutique, professional services, medical services, or retail space



Floor Plans

Commercial unit 1 & 2

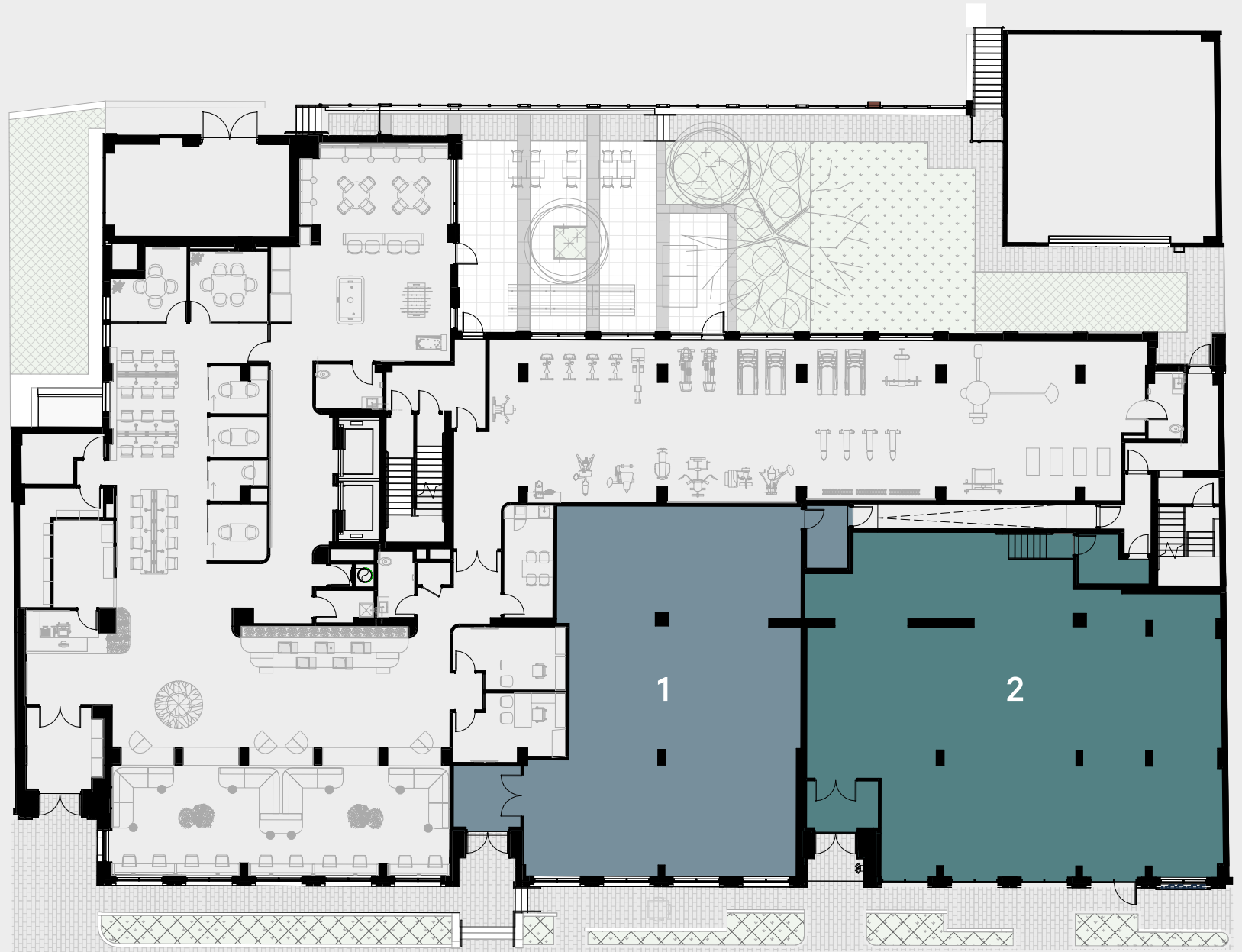
(Can be combined for a total of 5,264 SQ. FT.)

Commercial unit 1

■ 2,257 SQ. FT.

Commercial unit 2

■ 3,007 SQ. FT.



Centrally located in
downtown Montreal



Contact Us

Christopher Rundle
 Vice President
 Real Estate Broker
 +1 514 375 0818
 christopher.rundle@cbre.com

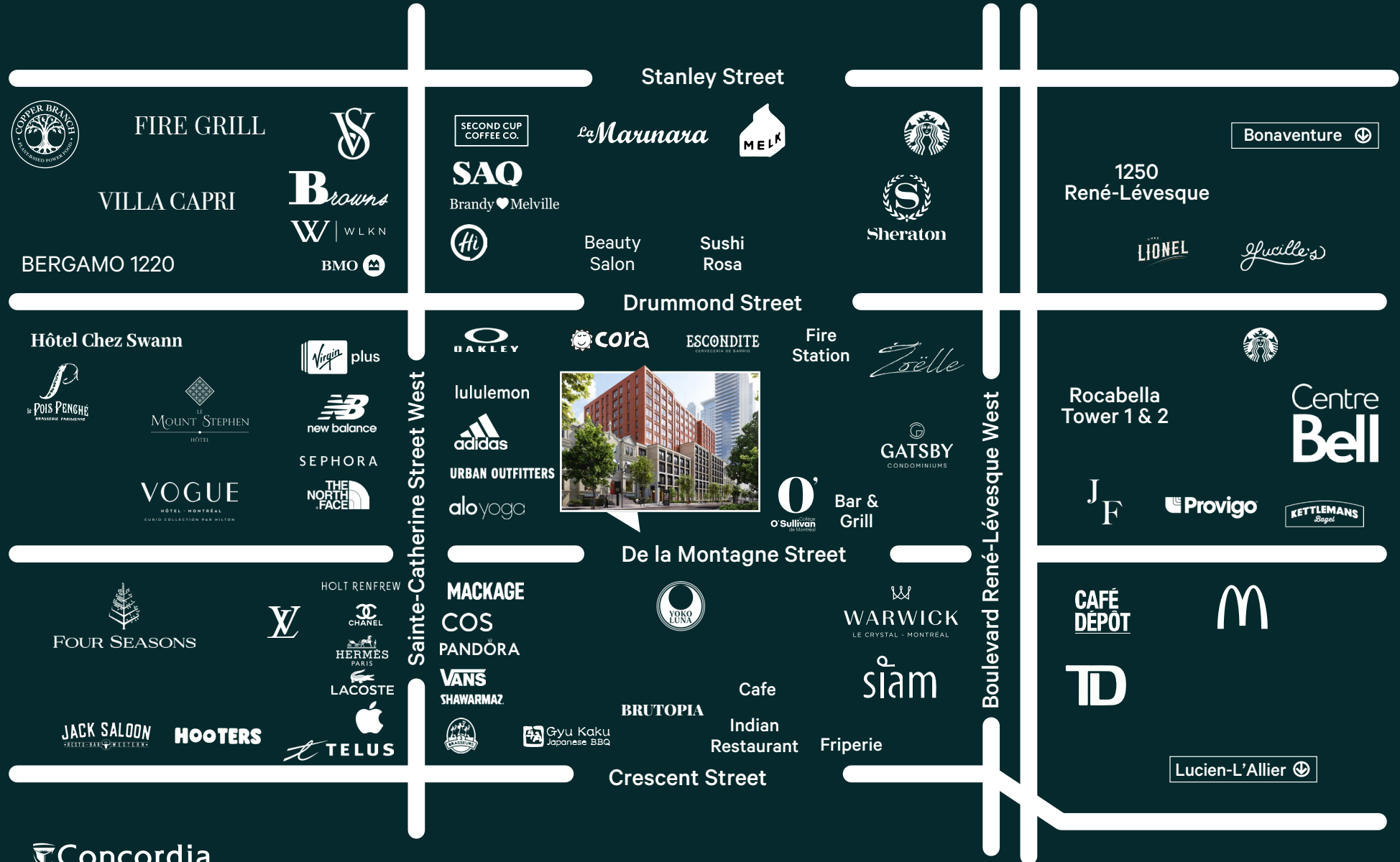
Bryan Greenberg
 Associate Vice President
 Commercial Real Estate Broker
 +1 514 375 2507
 bryan.greenberg@cbre.com

Amanda Angela Herbu
 Associate
 Commercial Real Estate Broker
 +1 514 375 0456
 amanda.herbu@cbre.com

CBRE Limited, Real Estate Agency | 1250 René-Lévesque
 Blvd West, Suite 2800 | Montréal, Québec H3B 4W8 | +1 514
 849 6000 | www.cbre.ca

This disclaimer shall apply to CBRE Limited, Real Estate Agency, and to all other divisions of the Corporation; to include all employees and independent contractors ("CBRE"). The information set out herein, including, without limitation, any projections, images, opinions, assumptions and estimates obtained from third parties (the "Information") has not been verified by CBRE, and CBRE does not represent, warrant or guarantee the accuracy, correctness and completeness of the Information. CBRE does not accept or assume any responsibility or liability, direct or consequential, for the information or the recipient's reliance upon the Information. The recipient of the Information should take such steps as the recipient may deem necessary to verify the Information prior to placing any reliance upon the Information. The Information may change and any property described in the Information may be withdrawn from the market at any time without notice or obligation to the recipient from CBRE. CBRE and the CBRE logo are the service marks of CBRE Limited and/or its affiliated or related companies in other countries. All other marks displayed on this document are the property of their respective owners. All Rights Reserved. Mapping Sources: Canadian Mapping Services canadamapping@cbre.com; DMTI Spatial, Environics Analytics, Microsoft Bing, Google Earth.

Location



Concordia