

KAUFFMANS

NEWLY REFURBISHED FULLY
FITTED OFFICE TO LET

2ND FLOOR - 2,251 SQ FT

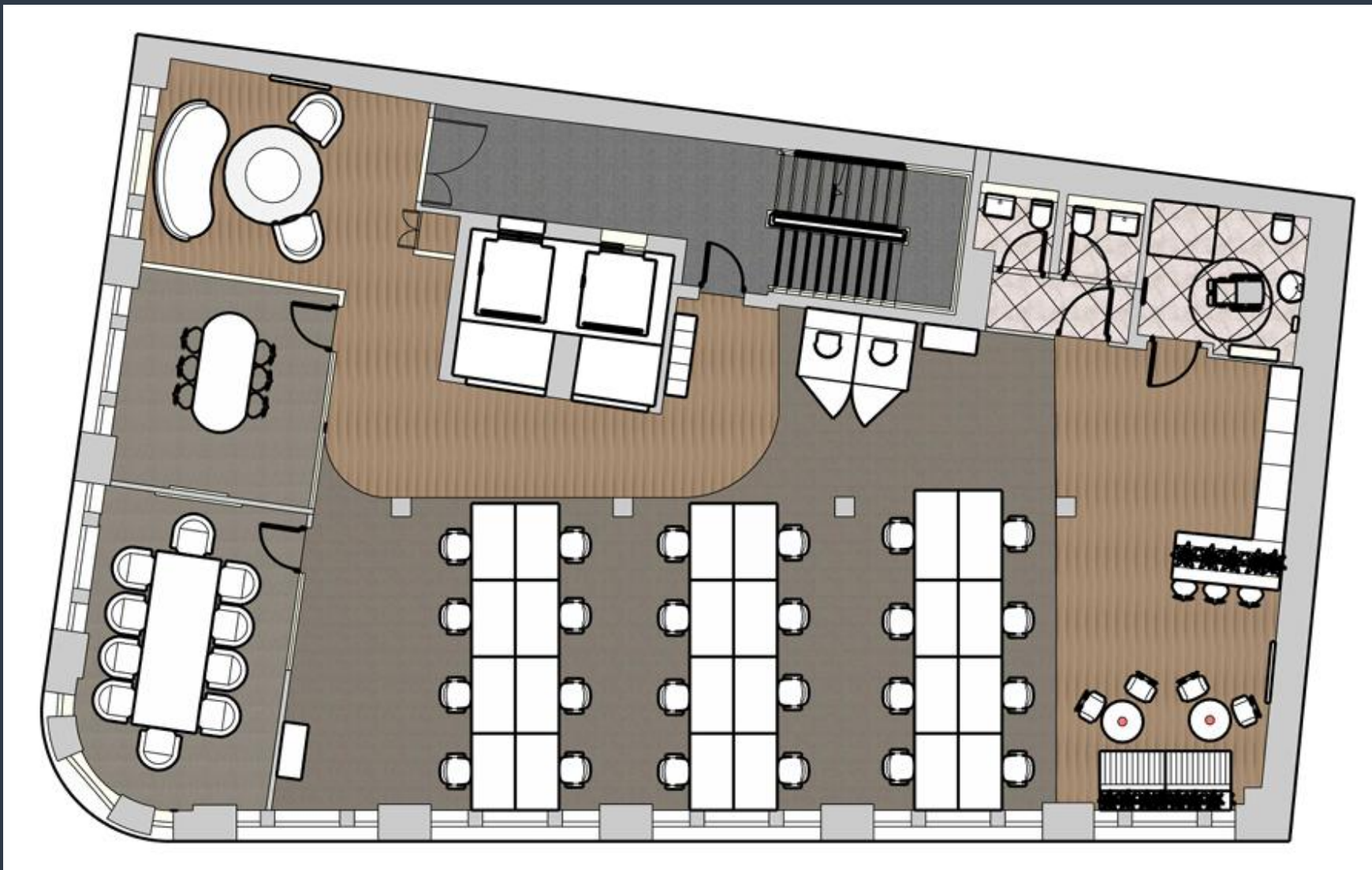
24A LIME STREET EC3

*(NOTE - AWAITING 2ND FLOOR PICTURES,
ALL PICTURES OF THE RECENTLY
REFURBISHED 4TH FLOOR*





4th Floor Layout:



Terms:

Floor	Size		Desks	£ per sq ft per annum			Total	
	Sq ft	Sq M		Rent	Rates	Serv Charge	Total	Per Month
2 nd	2,251	209.12	24-30	£75.00	£21.94 (est)	£15.80	£253,777	£21,148

Further Information

To arrange a viewing or for any further information, please contact:

Jeremy Prosser

E: jeremy@kauffmans.co.uk

T: 020 7871 2828

M: 07931 593 163

Anne Housden

E: anne@kauffmans.co.uk

T: 020 7871 2828

M: 07775 874 480

KAUFFMANS

74 Coleman Street

London

EC2R 5BN

Tel: (0)20 7871 2828

Disclaimer:

Kauffmans on their behalf and for the Vendors or Lessors of this property, whose Agents they are, give notice that: These particulars are set out as a general outline only for guidance to intending Purchasers or Lessees, and do not constitute any part of an offer or contract. Details are given without any responsibility and any intending Purchasers, Lessees or Third Parties should not rely on them as statements or representations of fact, but must satisfy themselves by inspection or otherwise as to the correctness of each of them. No person in the employment of Kauffmans has any authority to make any representation or warranty whatsoever in relation to this property. Unless otherwise stated, all prices and rents are quoted exclusive of VAT. The market statistics, rental and investments comparables have been supplied by third parties and their accuracy cannot be guaranteed. January 2026 .