

241 Spadina Avenue  
Toronto, Ontario



**ALLIED**

**LEASING CONTACT**  
Emma Turner  
D 416 304 9180 T 416 977 9002  
[eturner@alliedreit.com](mailto:eturner@alliedreit.com)

With more than 200 properties across Canada, comprising more than 15 million square feet, Allied has earned a reputation for contributing to the vitality of Canada's most vibrant urban neighbourhoods, and for developing workplaces distinguished by thoughtful, human-scale design, proactive property management, and an unsurpassed occupant experience.

### PROPERTY HIGHLIGHTS

Situated in Toronto’s Fashion District, this building is a six-storey office building located on the east side of Spadina Avenue, south of Dundas Street.

### TELECOM PROVIDERS

- Bell
- Beanfield

### TRANSIT

- 15 Minute Walk to PATH
- 25 Minute Walk to Union Station
- 1 Minute Walk to Streetcar
  - 510 Spadina
- 15 Minute Walk to Osgoode Subway Station

### SUITE INFORMATION

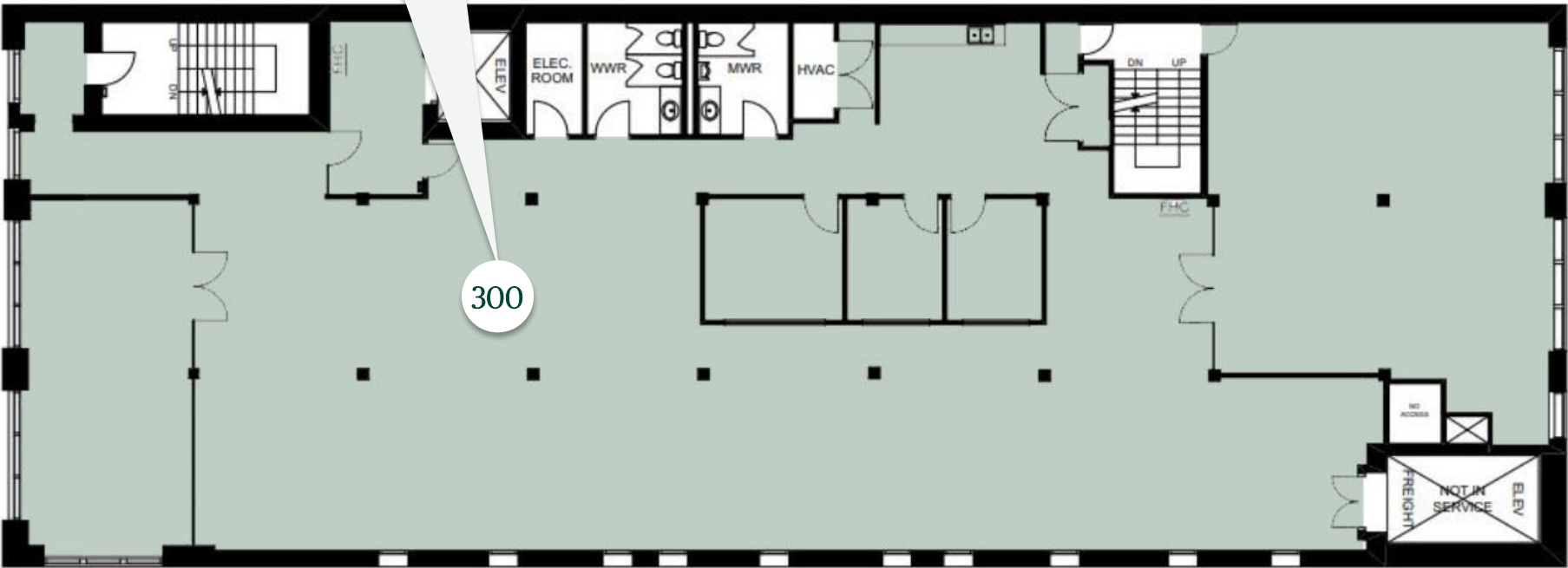
SUITE	SF	TYPE	AVAILABILITY	VIRTUAL TOUR
300	6,162	Office	30 Day Notice	<a href="#">Click Here</a>

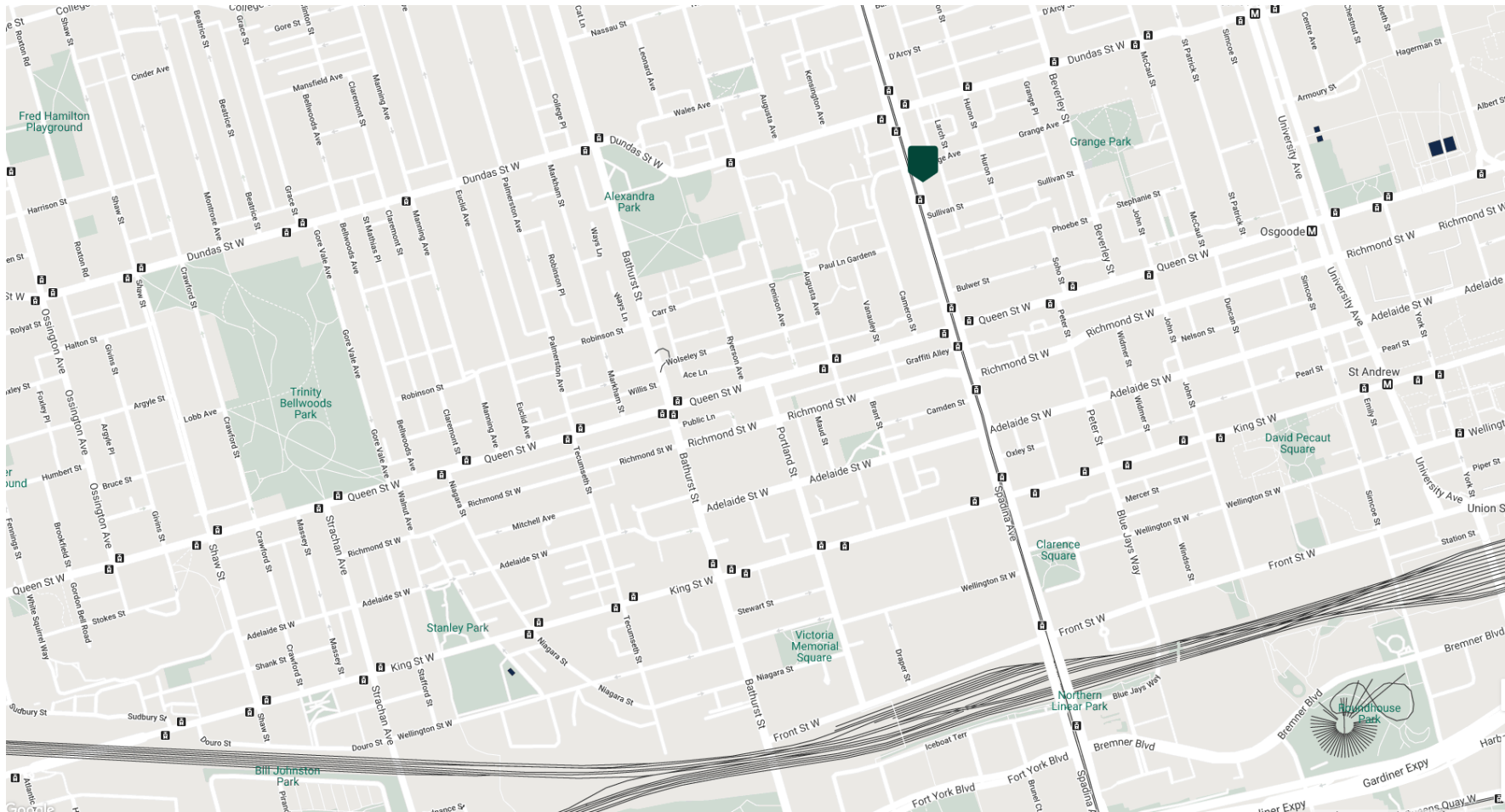
**Net Rent** Call Leasing Contact

**Additional Rent** Excludes Utilities &  
\$24.51 Excludes In-Suite Janitorial

241 Spadina Avenue  
Third Floor Floorplan

Suite 300  
6,162 sf





## LOCATION

Walk Score® | 99 Walker's Paradise  
 Transit Score® | 100 Rider's Paradise  
 Bike Score® | 100 Biker's Paradise  
 Less than one minute walk to streetcars

## ALLIED

## RESTAURANTS

Alo  
 Aloette  
 Fresh Restaurants  
 Maker Pizza  
 Pokito  
 R&D

## HEALTH & WELLNESS

Basecamp Climbing  
 DROP Boxing & Athletic Wellness  
 Fit Squad Training  
 Goodlife Fitness  
 HealthOne Wellness  
 Spinco  
 Totum Life Science  
 Well BYND  
 Yoga Tree

## SERVICES

BMO Bank of Montreal  
 CIBC  
 LCBO  
 Loblaws  
 RBC Royal Bank  
 Scotiabank Theatre  
 Shangri-La Toronto  
 TD Canada Trust  
 The Ritz Carlton

**ALLIED**

**ALLIED PROPERTIES**

134 Peter St, Suite 1700 Toronto, On M5v 2H2  
T 416 977 9002 F 416 306 8704  
[alliedreit.com](http://alliedreit.com)