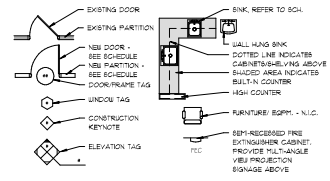


LEGEND



GENERAL FLOOR PLAN NOTES:

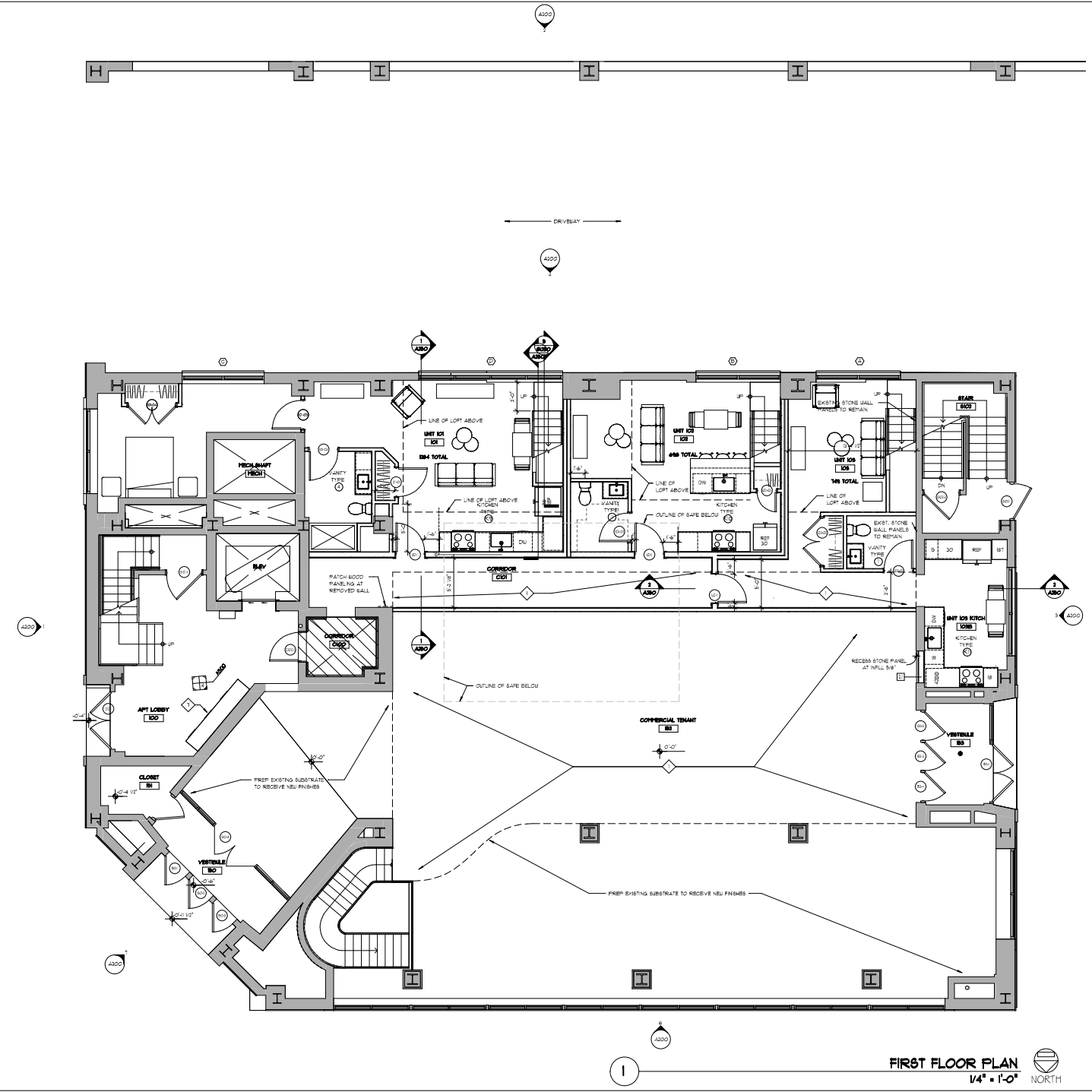
- REFER TO U.L. FIRE RESISTANCE DIRECTORY FOR FIRE RATED DETAILS ON ALL WALLS, COLUMNS, FLOOR/CEILING & CEILING/ROOF ASSEMBLIES & PENETRATIONS IDENTIFIED FOR THIS PROJECT.
- REFER TO HVAC, MECHANICAL, ELECTRICAL, PLUMBING, FIRE PROTECTION & STRUCTURAL DRAWINGS FOR ASSOCIATED WORK.
- ALL DIMENSION LINES AT EXTERIOR WALLS MEASURED FROM FACE OF EXTERIOR MASONRY (WHERE APPLICABLE) OR 8-INCHES/4" FACE OF FOUNDATION.
- ALL DIMENSION LINES AT INTERIOR WALLS MEASURED FROM FACE OF GUB.
- ALL PARTITIONS SHALL BE TYPE 1 UNLESS NOTED OTHERWISE.
- CONTRACTOR SHALL PROVIDE BLOCKING AS REQUIRED FOR ALL MILLWORK AND EQUIPMENT INSTALLATION, BLOCKING TO BE FIRE TREATED, VERIFY WITH USER.
- PROVIDE MOISTURE RESISTANT GUB AT ALL WET AREAS (TOILETS, KITCHENS, POOL SINKS, ETC.)
- PROVIDE FIRE WRAP PROTECTION ON ALL EXPOSED PIPING IN KNOE SPACE.
- PROVIDE FIRE EXTINGUISHER CABINETS, SEPM RECESSED, AT EVERY FLOOR, EVENLY DISTRIBUTED, EXTINGUISHER TYPE & RATING SHALL CONFORM TO THE REQUIREMENTS OF THE FIRE CODE PER THE APPLICATION. CABINETS SHALL BE INSTALLED AT MINIMUM FROM THE FLOOR TO THE BOTTOM OF THE EXTINGUISHER, EXTINGUISHERS 40 POUNDS OR LESS SHALL BE 60" MAXIMUM FROM THE FLOOR TO THE TOP OF THE EXTINGUISHER, EXTINGUISHERS OVER 40 POUNDS SHALL BE INSTALLED WITH THE TOP OF THE EXTINGUISHER 42" MINIMUM FROM THE FLOOR. FINAL LOCATIONS & QUANTITIES TO BE VERIFIED WITH FIRE MARSHAL.
- LABEL ALL FIRE BARRIERS, FIRE PARTITIONS, SMOKE BARRIER & SMOKE PARTITIONS WITH SIGNS OR STENCILS IN THE CONCEALED SPACE ABOVE THE CEILING IN ACCORDANCE WITH NFPA 720.3.
 - BE LOCATED UPON 6" FEET OF THE END OF EACH WALL AND AT INTERVALS NOT EXCEEDING 30 FEET MEASURED HORIZONTALLY ALONG THE WALL OR PARTITION.
 - INCLUDE LETTERING NOT LESS THAN 3 INCHES IN HEIGHT WITH A MINIMUM 3/8 INCH STROKE IN A CONTRASTING COLOR INCORPORATING THE WORKINGS AS INDICATED BELOW FOR EACH RATED WALL TYPE.
- EXTENDING STORAGE SHALL INCLUDE STAIRS, PUBLIC TOILET ROOMS, ELEVATOR, BREAK/REST ROOMS, MECHANICAL, EQUIPMENT ROOMS, AND ROOMS CONTAINING UTILITY SHUT OFF'S, STORAGE DESIGN BY OTHERS.

FLOOR PLAN KEYNOTES:

- CLEAN AND POLISH EXISTING FLOOR AFTER CARPET REMOVAL.
- LOFT STAIR METAL STRINGER "READ 4" RIBBER, MAX RIBBER 1 3/4", MIN. TREAD 10" W/ 1" NOSING, GUARD RAILS 42" AFF, HAND RAILS 36" AFF.
- METAL GUARD RAIL 42" AFF.
- FULLY RECESSED, SEMI-RECESSED, OR SURFACE MOUNTED FIRE EXTINGUISHER CABINET AS WALL CAVITY PERMITTED, (GUB. CAPACITY UNLESS OTHERWISE REQUIRED BY FIRE MARSHAL) 3" INDENTED, 1/2" RECESSED, OR EQUAL, WHITE POWDER COATED FINISH W/ 3/16" ROLLED EDGE FINISH, VERTICAL CLEAR TYPED FINISH (UNLESS NOTED OTHERWISE), 1/2" RECESSED, 1/2" RECESSED, NON-SKIDABLE, CABINETS SHALL BE FIRE RATED (WHERE LOCATED IN RATED ASSEMBLIES), COORDINATE FINAL LOCATIONS AND QUANTITIES WITH TENANT PROOF AND AS APPROVED BY THE FIRE MARSHAL.
- PROVIDE KEY BOY IN ACCORDANCE WITH FIRM'S SGL. COORDINATE FINAL SPEC, QUANTITIES, AND LOCATIONS WITH FIRE MARSHAL PRIOR TO INSTALL.
- 2WAY EMERGENCY COMMUNICATION SYSTEM, SIMILAR TO RATH ADDRESSABLE 2WAY COMMUNICATION SYSTEM.
- 1/2" RECESSED HOLLOW LATH WITH MILLWORK ENCLOSURE, REFER TO ELEVATION DETAILS, USE APPROVED STANDARDS AND PARCEL BOXES WITH OUTGOING MILLWORK, BALUBURY INDUSTRIES 40, RECESSED MOUNTED 3"OOD BRIBES, COLOR TBC, COORDINATE INSTALLATION AND KEYING OF LOCKS WITH USER.

APARTMENT GENERAL NOTES:

- INTERIOR UNIT PARTITIONS TO BE 3/8" X 8" METAL STUD CONSTRUCTION WITH (1) LAYER 5/8" TYPE 'X' GUB EACH SIDE FOR A TOTAL THICKNESS OF 4" UNLESS NOTED OTHERWISE.
- ALL CLOSETS IN UNITS TO BE 2'-0" DEEP UNLESS NOTED OTHERWISE.
- PROVIDE SHELF & GOAT ROD AT ALL CLOSETS AS SHOWN, EXCEPT LINEN CLOSETS TO RECEIVE EVENLY SPACED SHELVES SIMILAR TO CLOSET PAD, EXPRESS SHELF, PRE-FINISHED SOLID SHELF SYSTEM, W/ HELD IN PLACE, PROVIDE ALL NECESSARY BRACKETS, POLLS, AND TRAY PICES AS REQUIRED FOR A FIELD MEASURED COMPLETE INSTALLATION.



FIRST FLOOR PLAN
1/4" = 1'-0" NORTH