



12,520 SF AVAILABLE FOR SUBLEASE  
TERM THROUGH MAY 31, 2036



Clean Flex/R&D space



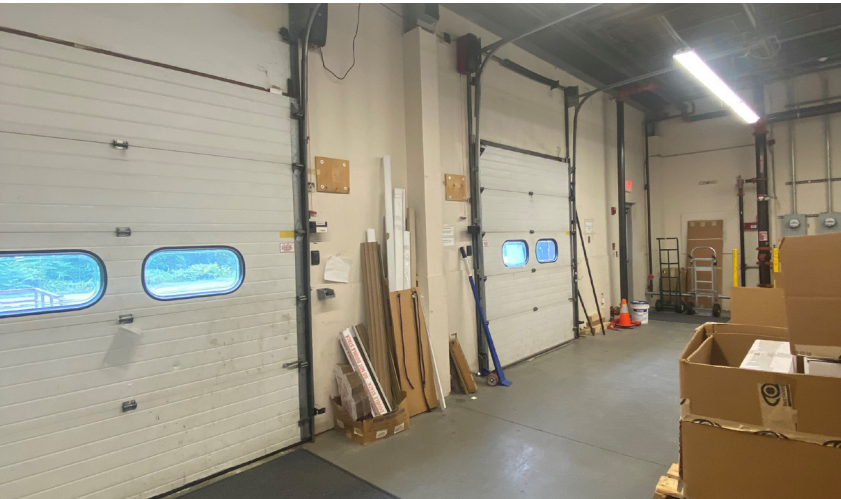
Turnkey suite with new flooring,  
lighting, and break area



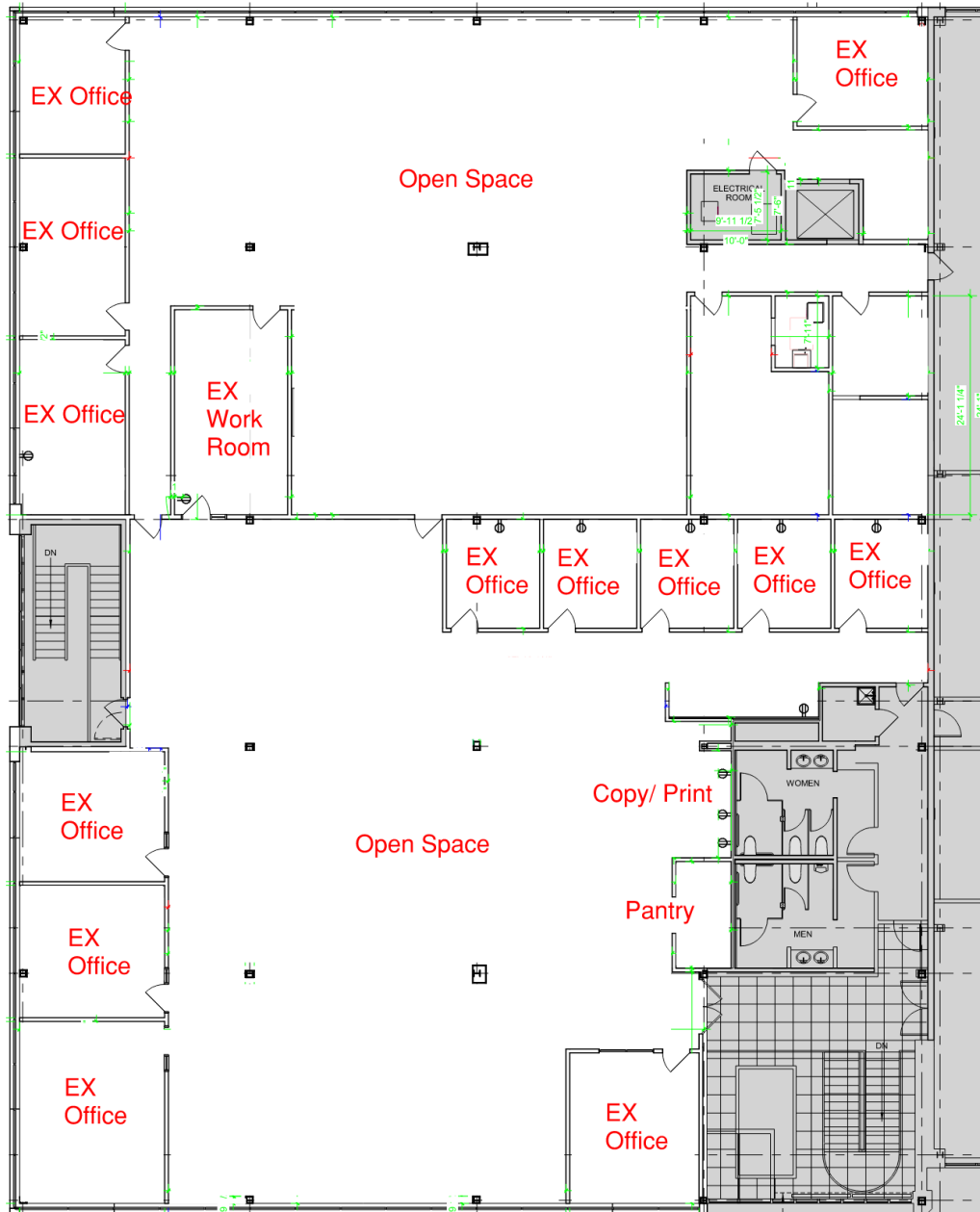
Loading dock access



Flexible lease term and T.I.



# FLOOR PLAN | 12,520 SF



For more information, please contact:

**Michael Dalton**  
Principal  
617.838.0022  
michael.dalton@avisonyoung.com

**Jason Levendusky**  
Principal  
617.448.4004  
jason.levendusky@avisonyoung.com

**Chris Reilly**  
Senior Associate  
781.956.8989  
chris.reilly@avisonyoung.com

200 State Street | Floor 15 | Boston, MA

© 2026. Avison Young. Information contained herein was obtained from sources deemed reliable and, while thought to be correct, have not been verified. Avison Young does not guarantee the accuracy or completeness of the information presented, nor assumes any responsibility or liability for any errors or omissions therein. Some imagery may have been edited using AI tools for visualization purposes.

**AVISON  
YOUNG**