

# 465-479 SOUTH BROADWAY

YONKERS, NY 10705



# A HIGHLY AMENITIZED RETAIL CORRIDOR

JOIN THESE RETAILERS ON SOUTH BROADWAY!



As the one main road between Yonkers and Manhattan, South Broadway is a highly diversified retail stretch servicing the needs of the surrounding communities and commuters alike. With easy access to the Henry Hudson Parkway, Riverdale, The Bronx, Manhattan, and Downtown Yonkers, over 11,000 daily vehicles pass the property every day.



# 467 S BROADWAY

## SPACE FEATURES

1,400 SF Dry-Use Retail

19 FT Store Frontage

Full Basement

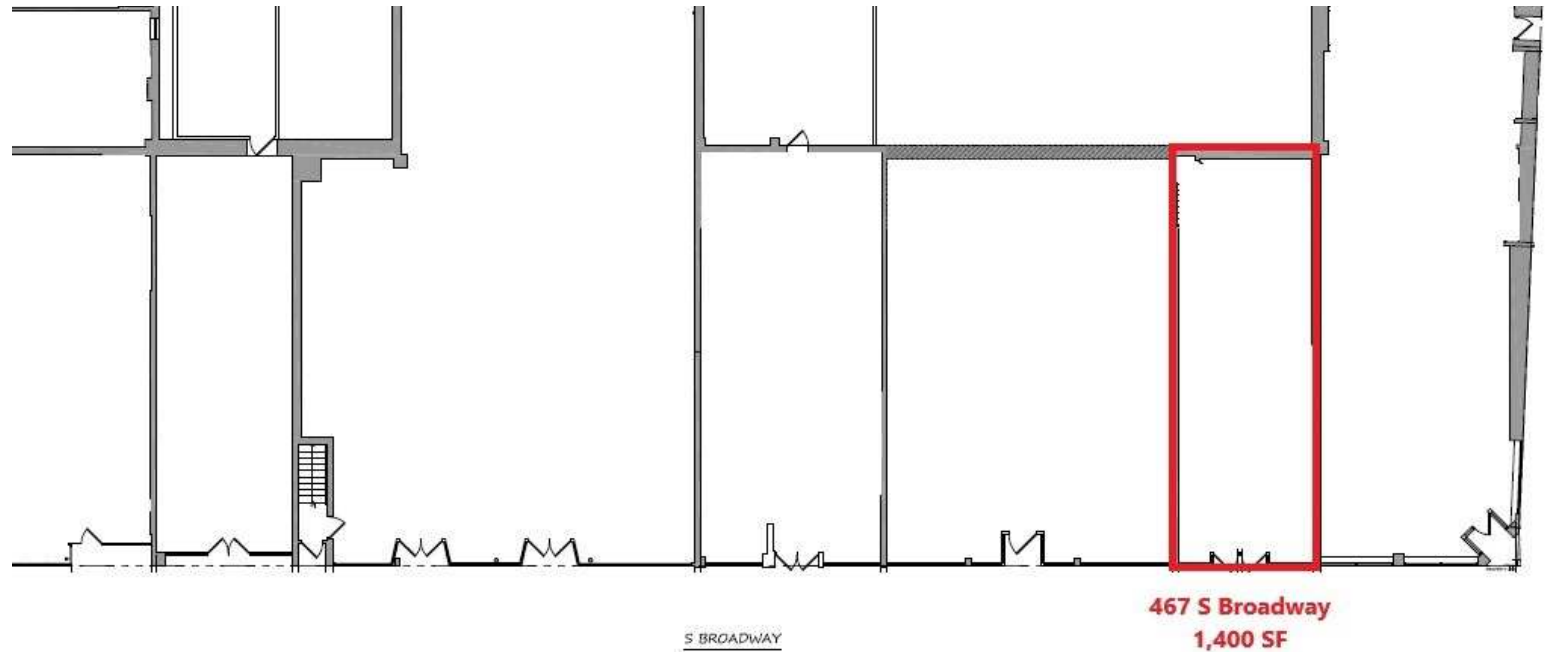
Handicap Restroom

High Ceiling Height

Secure Metal Gate

Rooftop Signage Potential

Can be Combined with 469



# 469 S BROADWAY

## SPACE FEATURES

2,600 SF Dry Use Retail

42 FT Store Frontage

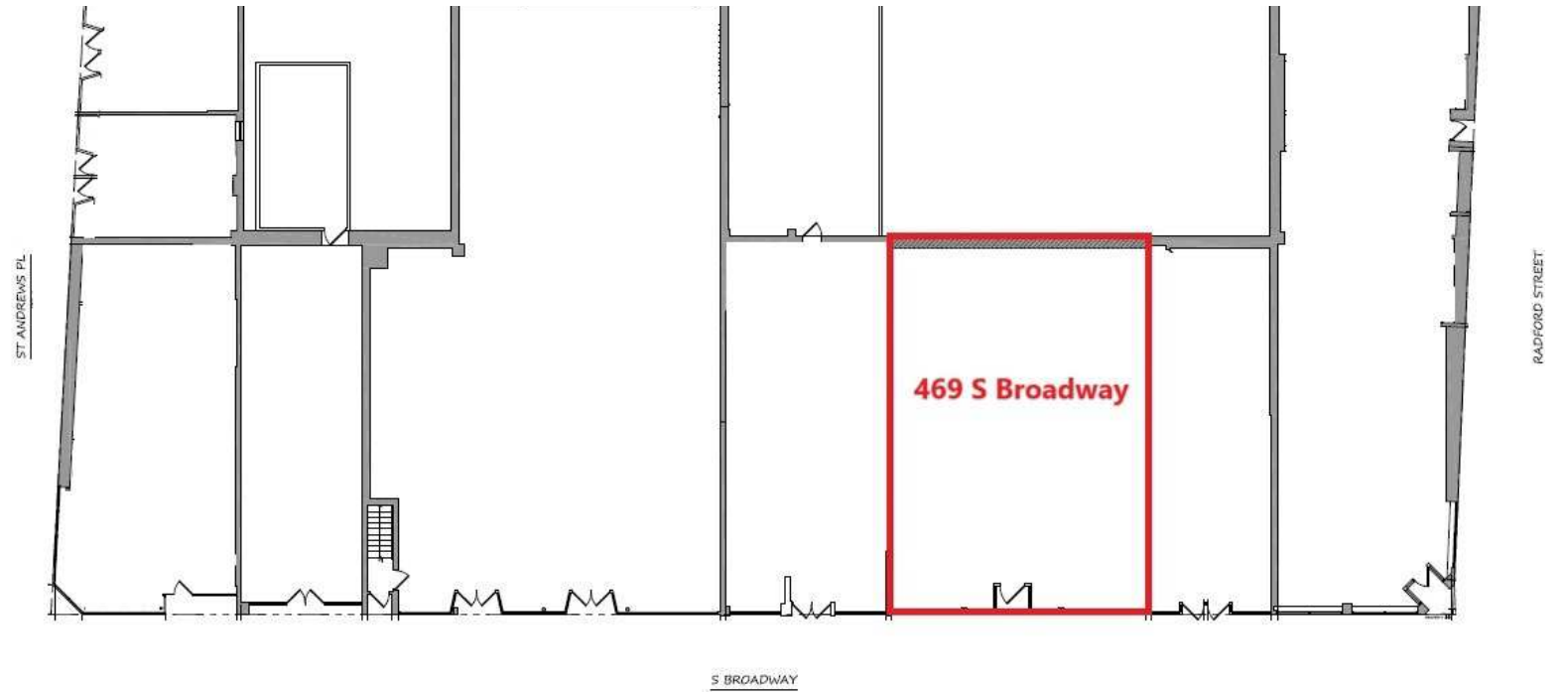
Full Basement

Back Office

Restroom

Secure Metal Gate

Can be Combined with 467



# 479 S BROADWAY

## SPACE FEATURES

1,750 SF Corner Space

30 FT Store Frontage

Oversized Basement

Open Space

Restroom

Secure Metal Gate

Available with 60 Days Notice



# 5 St. ANDREWS PLACE

## SPACE FEATURES

519 SF Dry-Use Retail Space

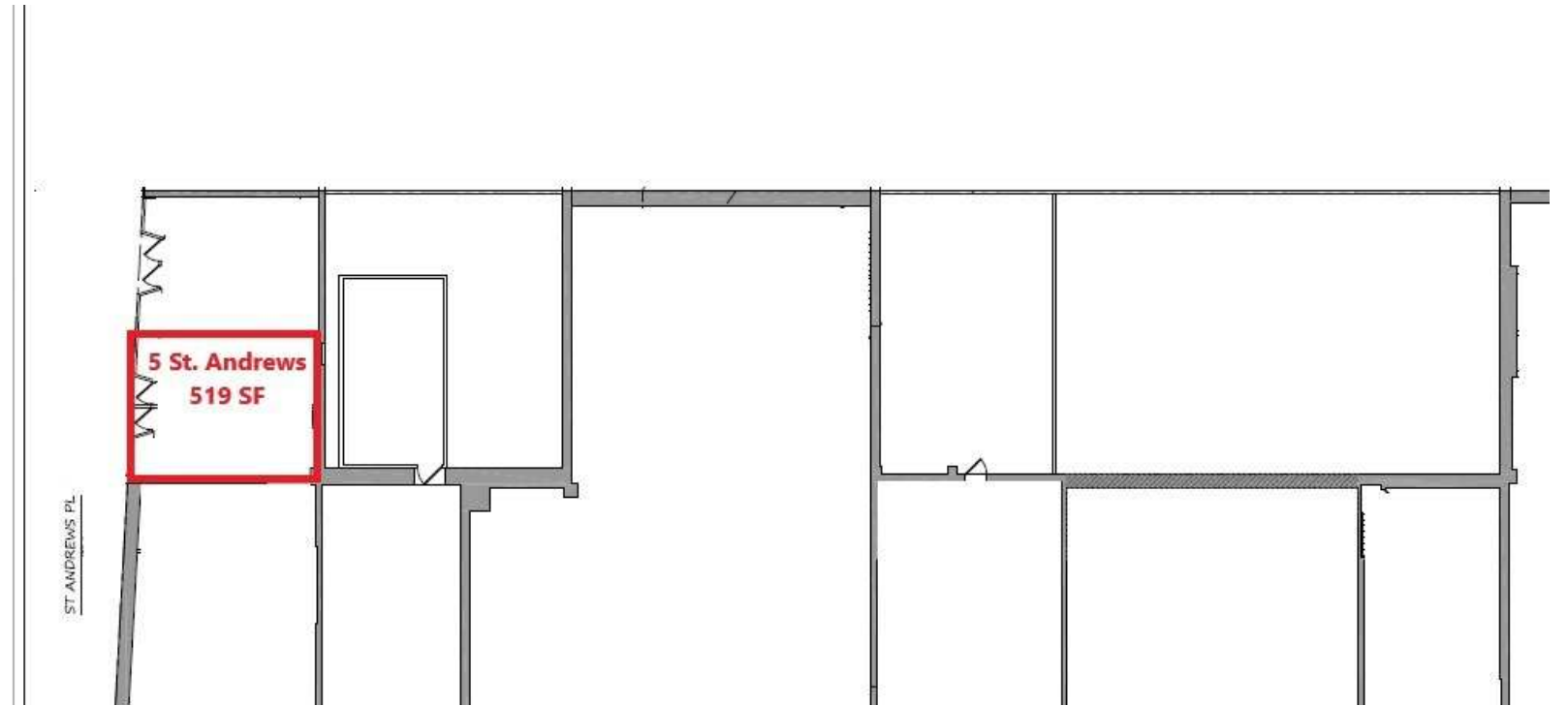
19 FT Store Frontage

2 Restrooms

High Ceiling Heights

Backyard Access

Secure Metal Gate





# 465-479 SOUTH BROADWAY

YONKERS, NY 10705

## CONTACT US:

**NATHAN WILSON**

+1 (646) 389 8704

[nathan.wilson@agwpartners.com](mailto:nathan.wilson@agwpartners.com)

**AGW**  
PARTNERS