



93 Court Street

(Between Livingston & Schermerhorn Streets)

As Exclusive Agents, we are pleased to present the following for Lease:

Prime Downtown Brooklyn Boutique Office Space

 **Douglas Elliman**
Commercial

575 MADISON AVENUE, NEW YORK, NEW YORK 10022

93 Court Street

Position your business at the epicenter of one of Brooklyn's most dynamic corridors.

The property is conveniently connected to multiple subway lines and nearby transportation hubs, making it effortless for staff and clients to access.

This boutique walk-up office space was fully renovated in 2024, offering a clean, modern aesthetic and abundant natural light.

Ideal for businesses seeking a more private, self-contained environment, the space lends itself to a wide range of professional and creative uses.

Location Downtown Brooklyn between Livingston & Schermerhorn Streets

Space Second Floor: 1,792 RSF
Third Floor: 1,792 RSF

Total: **3,584 RSF**
**Divisions Considered*

Rent Upon Request

- Features**
- Second & Third Floor Office Space Renovation Completed in 2024
 - Two Restrooms per Floor

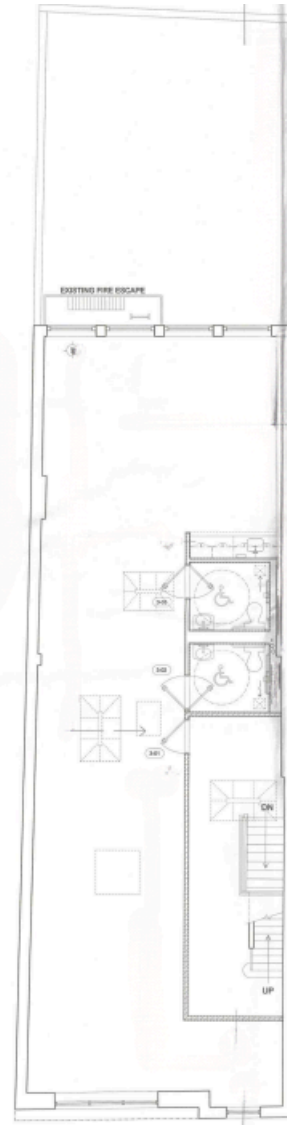


93 Court Street, Boutique Office

FLOOR PLANS



Second Floor
1,792 RSF

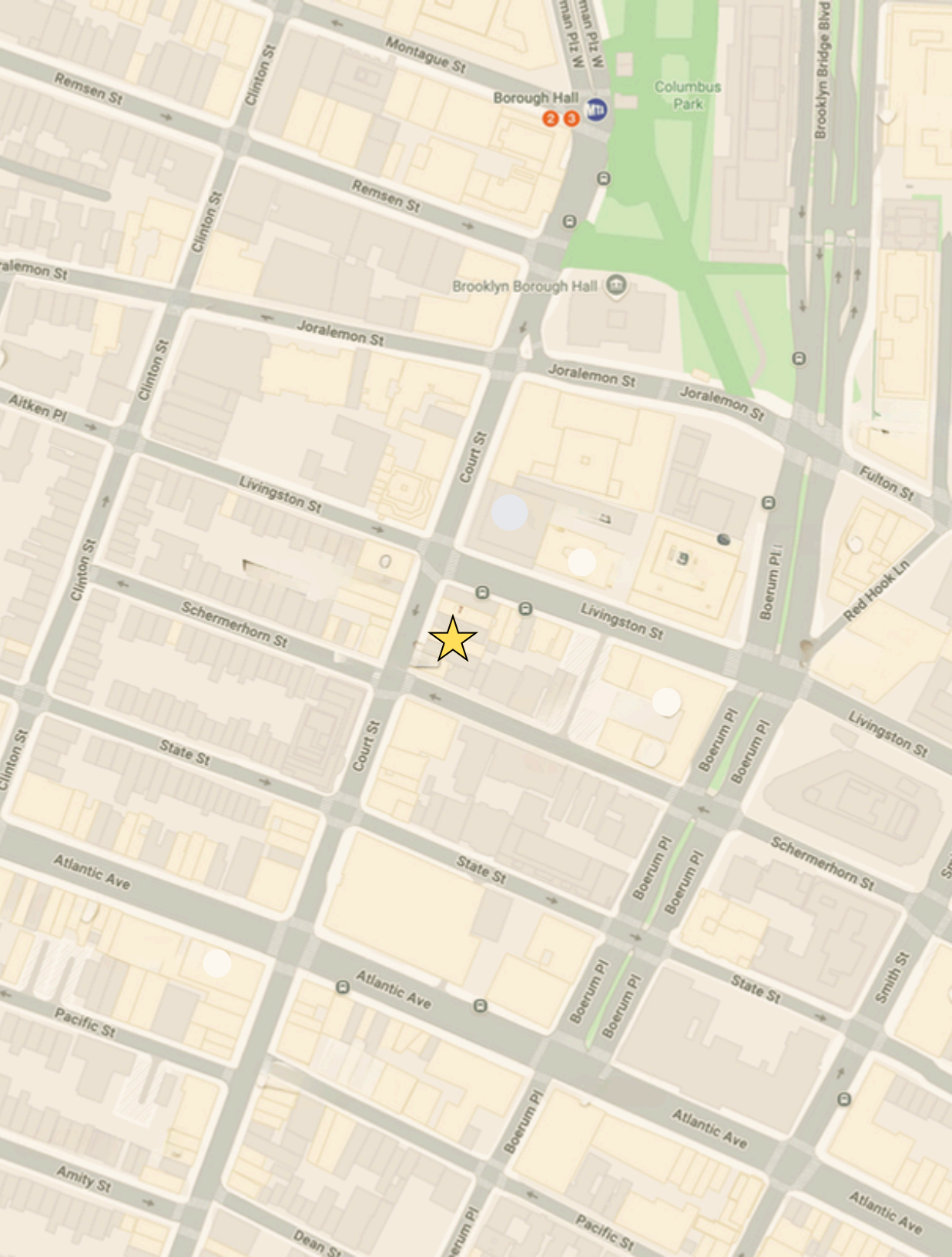


Third Floor
1,792 RSF

93 Court Street, Boutique Office

ADDITIONAL PHOTOS





For further information and inspection, please contact:

Louis Puopolo

Division Head NYC - DE Commercial
Licensed Associate Real Estate Broker
917-374-0099
louis.puopolo@elliman.com

Alex Furst

Executive Director - DE Commercial
Licensed Associate Real Estate Broker
347-281-3165
alexander.furst@elliman.com

Kristin Irwin

Operations Manager - DE Commercial
Licensed Real Estate Salesperson
336-420-1993
kristin.irwin@elliman.com



©2025 DOUGLAS ELLIMAN COMMERCIAL, LLC. ALL RIGHTS RESERVED. THE INFORMATION CONTAINED IN THIS DOCUMENT IS PROPRIETARY TO DOUGLAS ELLIMAN COMMERCIAL, LLC AND SHALL BE USED SOLELY FOR THE PURPOSES OF EVALUATING THIS PROPOSAL. ALL SUCH DOCUMENTATION AND INFORMATION REMAINS THE PROPERTY OF DOUGLAS ELLIMAN COMMERCIAL, LLC AND SHALL BE KEPT CONFIDENTIAL. REPRODUCTION OF ANY PART OF THIS DOCUMENT IS AUTHORIZED ONLY TO THE EXTENT NECESSARY FOR ITS EVALUATION. IT IS NOT TO BE SHOWN TO ANY THIRD PARTY WITHOUT THE PRIOR WRITTEN AUTHORIZATION OF DOUGLAS ELLIMAN COMMERCIAL, LLC. ALL INFORMATION CONTAINED HEREIN IS FROM SOURCES DEEMED RELIABLE; HOWEVER, NO REPRESENTATION OR WARRANTY IS MADE AS TO THE ACCURACY THEREOF.