



# FOR LEASE

PRIME RESTAURANT OPPORTUNITY ON GRAND AVENUE



**357 Grand Ave**  
Oakland, CA 94610



**\$9,500 PER MONTH**

Industrial Gross

**± 2,770 sq. ft.**

## Turnkey Restaurant Opportunity on Grand Avenue

Move-in ready, second-generation restaurant space located in one of Oakland's most active commercial corridors.

Efficient existing build-out allows operators to reduce construction time and open quickly—ideal for restaurant concepts seeking strong street presence and consistent foot traffic.

# PROPERTY HIGHLIGHTS:

- Elegant dining room with bar seating and tables (130 person occupancy)
- Built-out bar previously used for sushi preparation.
- Full oversized kitchen with 16 ft Type 1 hood, walk-in, and plenty of prep space.
- Three bathrooms (two for customers, one for BOH).
- Liquor license and all existing FF&Es are available for purchase.

## BUILT-OUT PRODUCTION KITCHEN

A fully equipped, over-sized kitchen designed for efficiency.

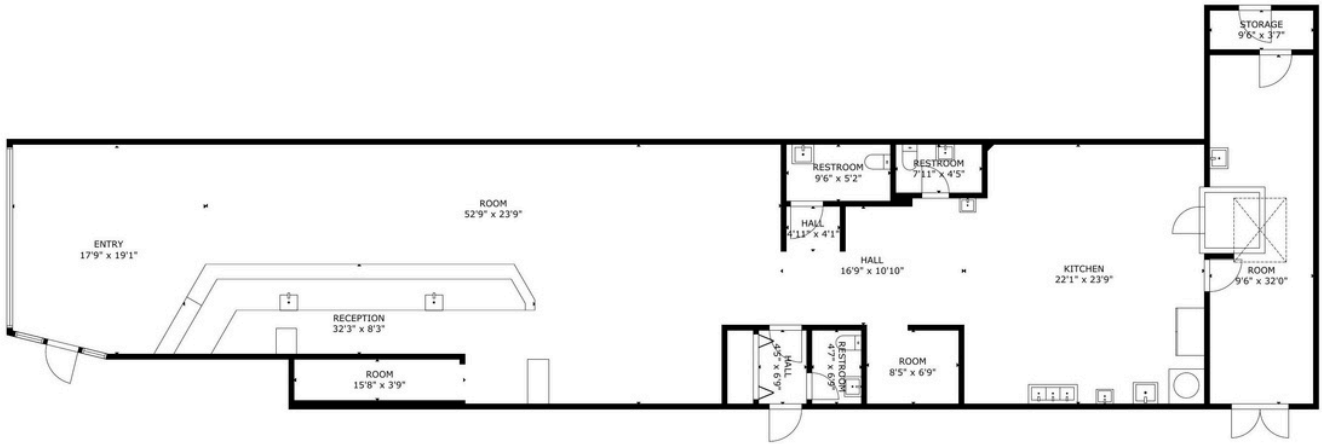


## PROFESSIONAL COOK LINE

Fully built-out cooking area with 16 ft commercial Type 1 hood.

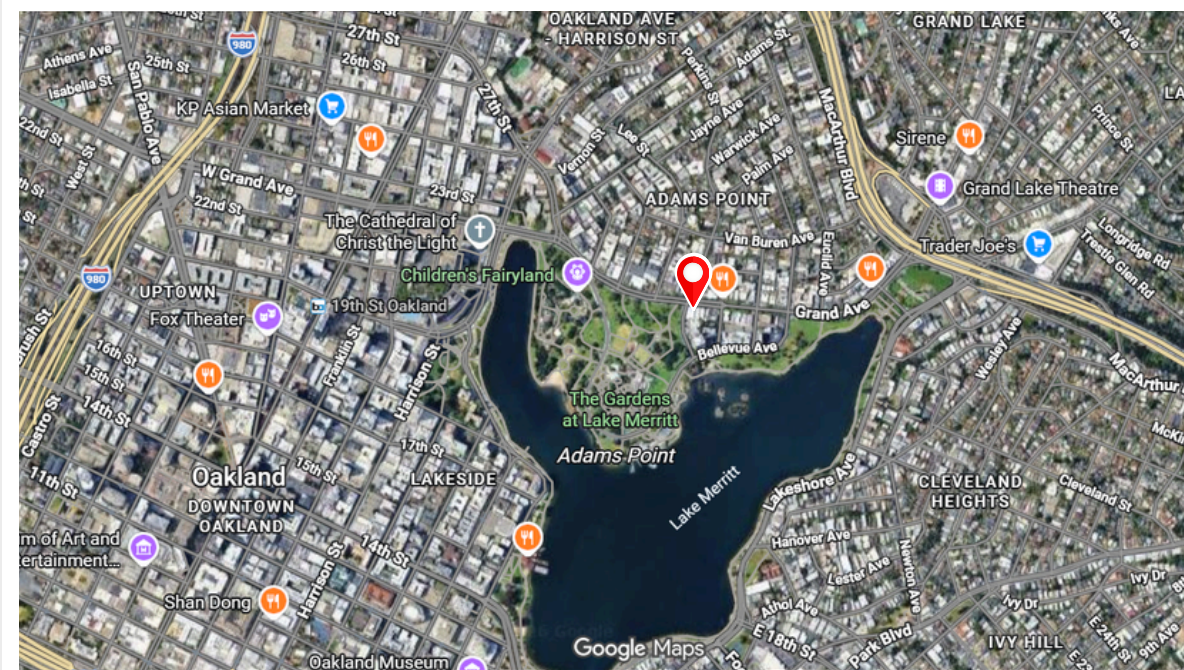


# FLOOR PLAN



# PROPERTY LOCATION

📍 357 Grand Ave, Oakland, CA 94610, USA



## NEARBY AMENITIES & ATTRACTIONS:

One block from the many amenities of Lake Merritt, the Adam's Point commercial corridor is conveniently mid-way between Downtown Oakland and the popular Grand Lake neighborhood. Home to many young residents who want the rare combination of both walking accessibility and transportation along with homey tree-lined streets, this neighborhood has become a buzzing hub of popular restaurants and eateries.

**FOR THE SECOND STRAIGHT  
YEAR, OAKLAND WAS VOTED  
BEST FOOD CITY IN THE U.S.  
ACCORDING TO CONDÉ  
NAST TRAVELER**



## CONTACT US



**Colby Katz**

(510)450-1420

[ckatz@mrecommercial.com](mailto:ckatz@mrecommercial.com)

LIC# 01949015



**Francis Griffin**

(510)450-1405

[fgriffin@mrecommercial.com](mailto:fgriffin@mrecommercial.com)

LIC# 02016713



[www.mrecommercial.com](http://www.mrecommercial.com)