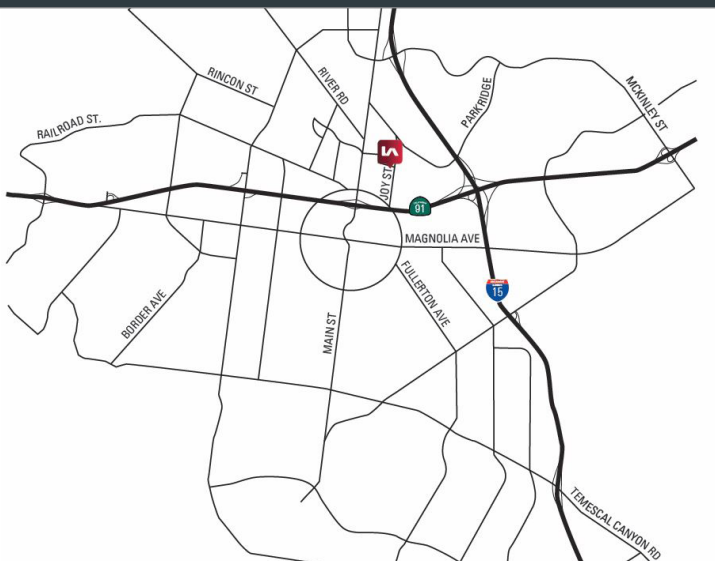




PRINCELAND COURT

CORONA, CALIFORNIA

**1,050 - 9,950 SF
MULTI-TENANT INDUSTRIAL PARK**



PROPERTY FEATURES:

- » Part of a master planned project
- » Great location with easy freeway access to both the 91 and 15 freeways
- » Walking distance to the Corona Metro-Link Station
- » Abundant retail amenities adjacent to the property
- » Fire sprinklers
- » 14' clear height

CONTACT US

CHRIS COYTE

Lee & Associates - Ontario

909.373.2935

ccoyle@lee-assoc.com

DRE #01017328

JOHN MARTIN

Lee & Associates - Ontario

949.373.2941

jmartin@lee-assoc.com

DRE #01346629



COMMERCIAL REAL ESTATE SERVICES

DISCLAIMER: The information contained herein has been obtained from the property owner or other third party and is provided to you without verification as to accuracy. We (Lee & Associates, its brokers, employees, agents, principals, officers, directors and affiliates) make no warranty or representation regarding the information, property, or transaction. You and your attorneys, advisors and consultants should conduct your own investigation of the property and transaction.

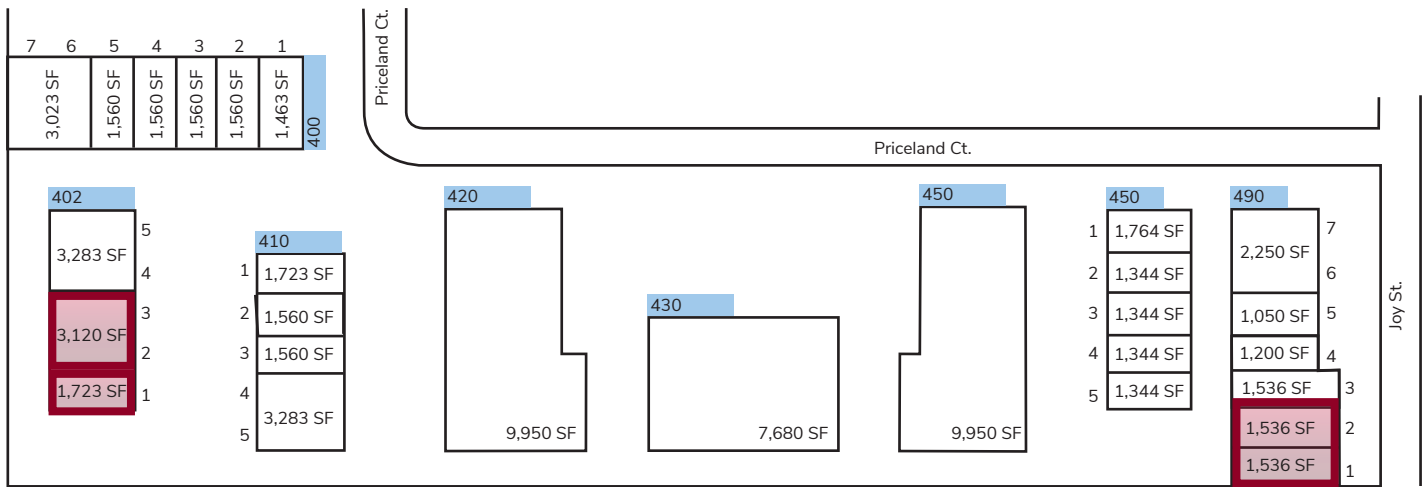


PRINCLAND COURT

CORONA, CALIFORNIA

CURRENT AVAILABILITY

ADDRESS	AVAILABLE SF	OFFICE SF	PRICE PSF*	CAM FEE	DATE AVAIL.
402 Princland Court, Suite 1	±1,723 SF	±500	\$1.60 MG	\$.08	Now
402 Princland Court, Suite 2 & 3	±3,120 SF	±1,000	\$1.60 MG	\$.08	Now
490 Princland Court, Suite 1	±1,536 SF	±300	\$1.60 MG	\$.08	Now
490 Princland Court, Suite 2	±1,536 SF	±200	\$1.60 MG	\$.08	Now



CONTACT US

CHRIS COYTE
 Lee & Associates - Ontario
 909.373.2935
 ccoyte@lee-assoc.com
 DRE #01017328

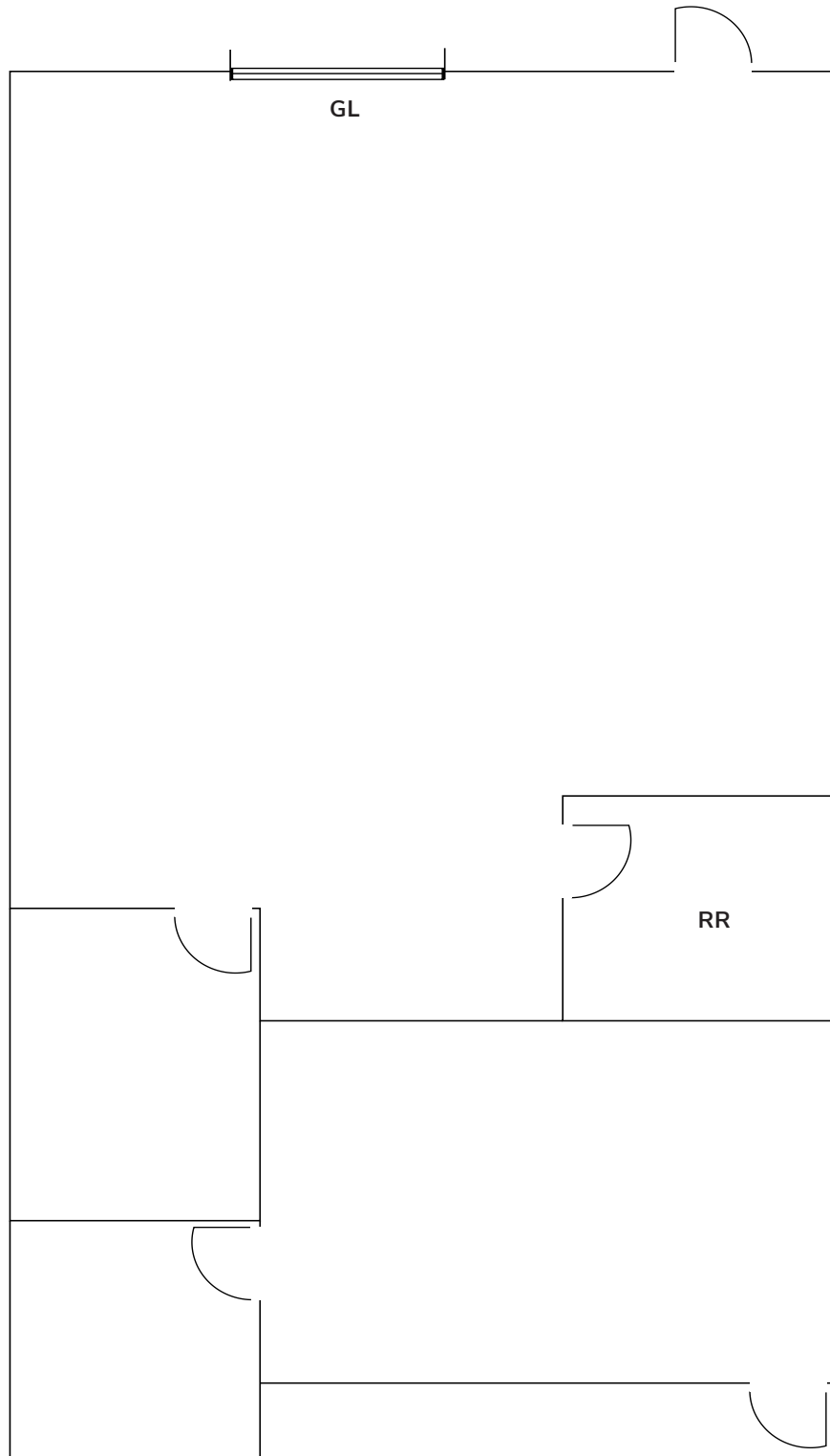
JOHN MARTIN
 Lee & Associates - Ontario
 949.373.2941
 jmartin@lee-assoc.com
 DRE #01346629



DISCLAIMER: The information contained herein has been obtained from the property owner or other third party and is provided to you without verification as to accuracy. We (Lee & Associates, its brokers, employees, agents, principals, officers, directors and affiliates) make no warranty or representation regarding the information, property, or transaction. You and your attorneys, advisors and consultants should conduct your own investigation of the property and transaction.

PRINCELAND COURT

402 Princeland Court, Suite 1



CONTACT US

CHRIS COYTE

Lee & Associates - Ontario

909.373.2935

ccoyle@lee-assoc.com

DRE #01017328

JOHN MARTIN

Lee & Associates - Ontario

949.373.2941

martin@lee-assoc.com

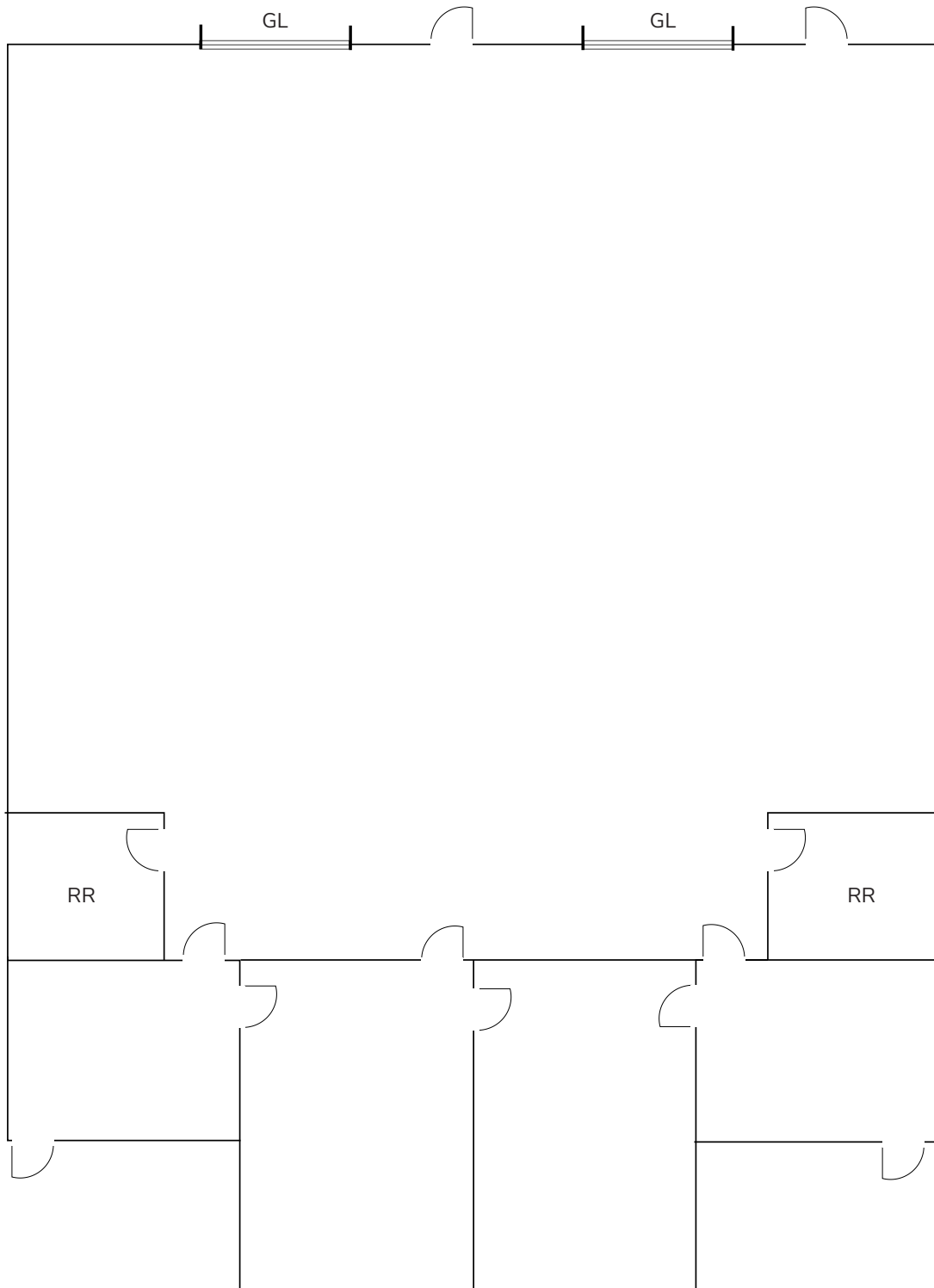
DRE #01346629



DISCLAIMER: The information contained herein has been obtained from the property owner or other third party and is provided to you without verification as to accuracy. We (Lee & Associates, its brokers, employees, agents, principals, officers, directors and affiliates) make no warranty or representation regarding the information, property, or transaction. You and your attorneys, advisors and consultants should conduct your own investigation of the property and transaction.

PRINCELAND COURT

402 Princeland Court, Suite 2 & 3



CONTACT US

CHRIS COYTE

Lee & Associates - Ontario

909.373.2935

ccoyle@lee-assoc.com

DRE #01017328

JOHN MARTIN

Lee & Associates - Ontario

949.373.2941

martin@lee-assoc.com

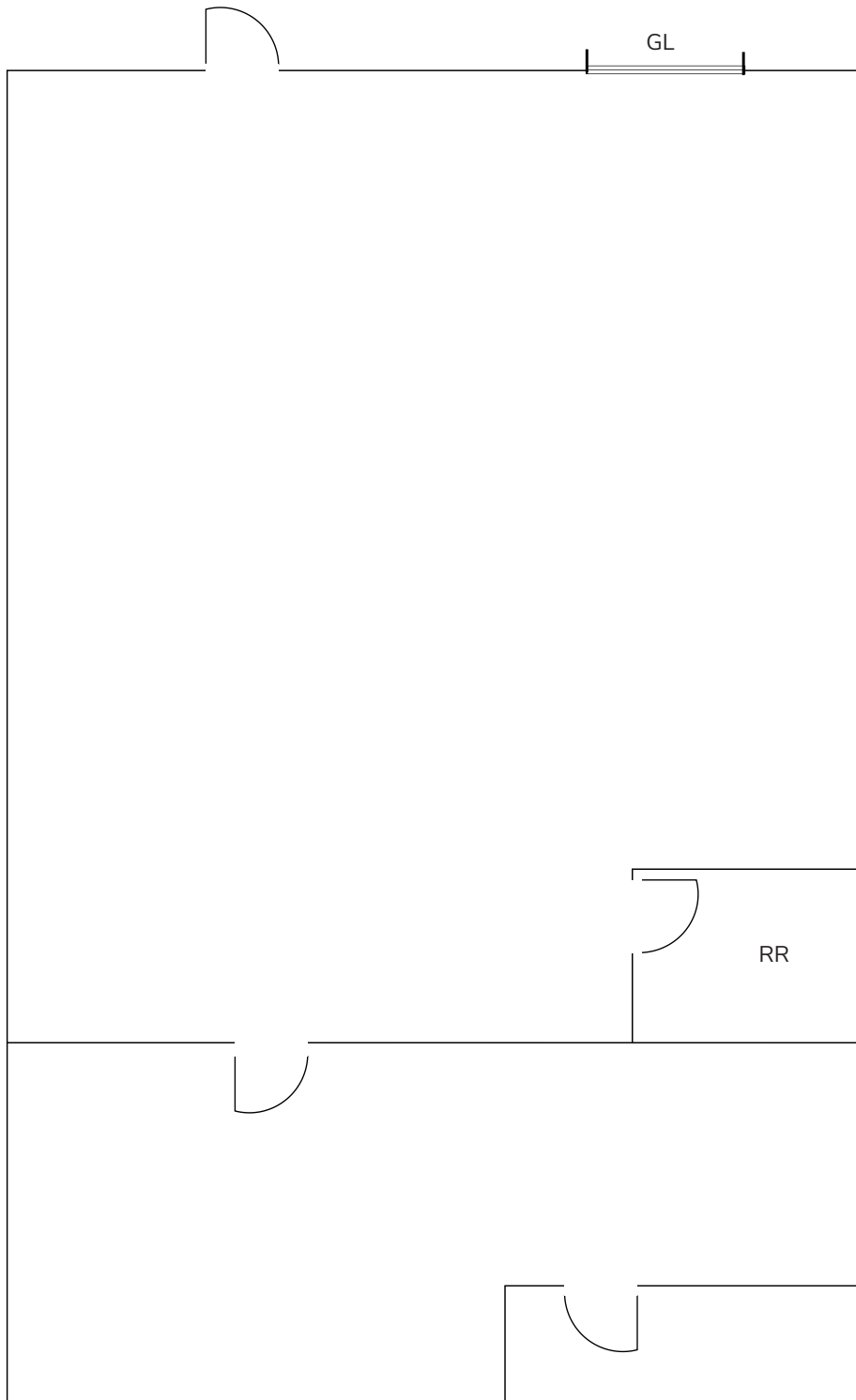
DRE #01346629



DISCLAIMER: The information contained herein has been obtained from the property owner or other third party and is provided to you without verification as to accuracy. We (Lee & Associates, its brokers, employees, agents, principals, officers, directors and affiliates) make no warranty or representation regarding the information, property, or transaction. You and your attorneys, advisors and consultants should conduct your own investigation of the property and transaction.

PRINCELAND COURT

490 Princeland Court, Suite 1



CONTACT US

CHRIS COYTE

Lee & Associates - Ontario

909.373.2935

ccoYTE@lee-assoc.com

DRE #01017328

JOHN MARTIN

Lee & Associates - Ontario

949.373.2941

jmartin@lee-assoc.com

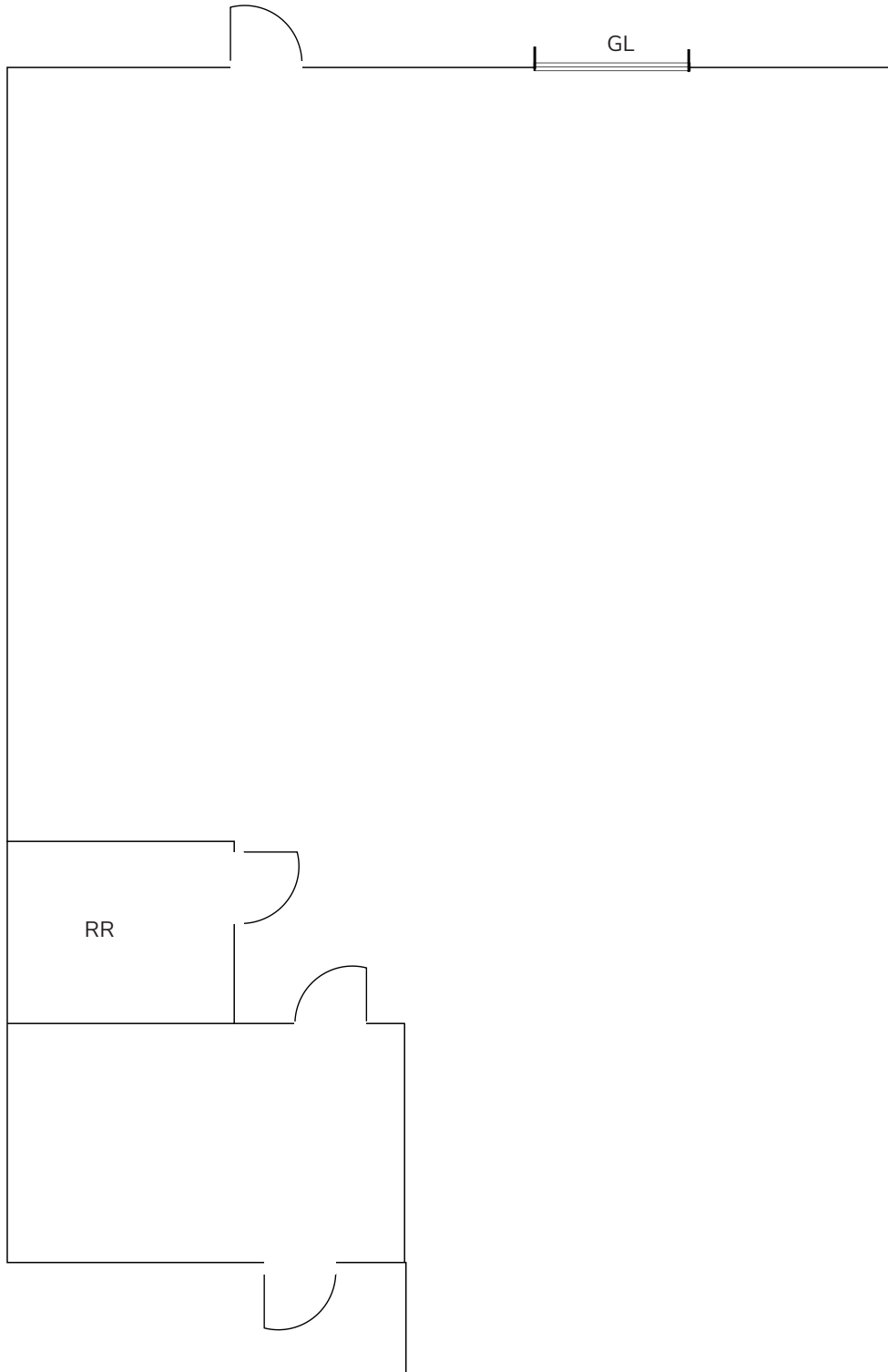
DRE #01346629



DISCLAIMER: The information contained herein has been obtained from the property owner or other third party and is provided to you without verification as to accuracy. We (Lee & Associates, its brokers, employees, agents, principals, officers, directors and affiliates) make no warranty or representation regarding the information, property, or transaction. You and your attorneys, advisors and consultants should conduct your own investigation of the property and transaction.

PRINCELAND COURT

490 Princland Court, Suite 2



CONTACT US

CHRIS COYTE

Lee & Associates - Ontario

909.373.2935

ccoyle@lee-assoc.com

DRE #01017328

JOHN MARTIN

Lee & Associates - Ontario

949.373.2941

martin@lee-assoc.com

DRE #01346629



DISCLAIMER: The information contained herein has been obtained from the property owner or other third party and is provided to you without verification as to accuracy. We (Lee & Associates, its brokers, employees, agents, principals, officers, directors and affiliates) make no warranty or representation regarding the information, property, or transaction. You and your attorneys, advisors and consultants should conduct your own investigation of the property and transaction.