

FOR LEASE



FACILITY OVERVIEW:

**±27,780 SF Two Building
Warehouse & Storage
Facility on 2.57 Acres**



**324 CLEARLAKE ROAD
COCOA, FLORIDA**

FOR INFO CONTACT:

MICHAEL MOSS II
Associate
321.266.1150
mmoss@teamlbr.com

MIKE MOSS, SIOR
Principal | Director
321.543.2498
Mike@teamlbr.com

LUKE BROWN
Associate
603.244.8052
Luke@teamlbr.com



LIGHTLE BECKNER ROBISON
INCORPORATED
COMMERCIAL REAL ESTATE SERVICES

INFORMATION CONTAINED HEREIN BELIEVED ACCURATE HOWEVER NOT WARRANTED

324 Clearlake Road Cocoa, Fl

±27,780 SF

Available For Lease

PROPERTY OVERVIEW

Building 1 SF +/-20,580

Building 2 SF..... 7,200

Clear Height +/-24'

Total Acreage 2.57 SF

Power Single Phase

Zoning BU-2

Loading Dock Hi & Grade Level

Lease Rate \$12.25/sf/yr NNN

CALL FOR MORE INFO

OFFERING SUMMARY

The team at Lightle Beckner Robison, Inc. is now offering this versatile property in the heart of Cocoa, Florida for Lease. The property consists of a 20,280 square feet of clear span high bay warehouse with two story office space and an additional open 7,200 square foot warehouse situated on 2.57 acres. The property offer great road frontage, grade level and dock hi loading along with ample 360 degree truck access and outside storage space. Contact our team to learn more about this opportunity!

PROPERTY FEATURES:

- Prime Street Frontage
- Clear Span High Bay warehouse w/ dock hi ramp and grade level loading
- Ample Parking & Fenced Outside Storage
- 2 Miles from Interstate 95 & 3 Miles from SR 528
- Available 10/01/2025

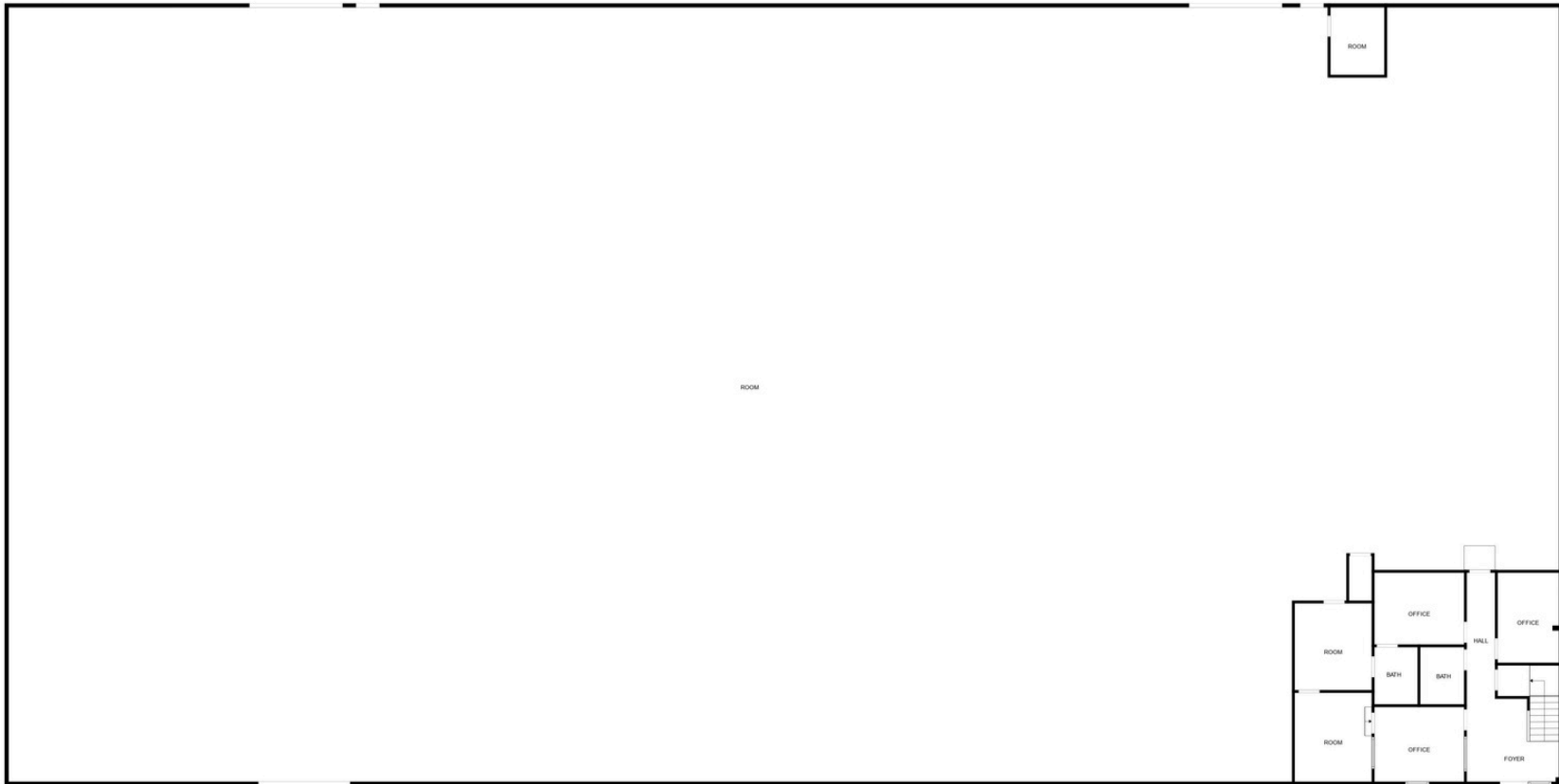
LOCATION INSIGHT



PROPERTY PHOTOS



BLDG 1 FLOOR PLAN



LOCATION INSIGHT



www.TEAMLBR.com | 324 Clearlake Road Cocoa, FL | FOR LEASE

CALL FOR INFO

MICHAEL MOSS II
Associate
321.266.1150
mross@teamlbr.com

MIKE MOSS, SIOR
Principal | Director
321.543.2498
Mike@teamlbr.com

LUKE BROWN
Associate
603.244.8052
Luke@teamlbr.com

DRIVE TIME HIGHLIGHTS

MILES	HOURS	CITY
35	0.5	Orlando, FL
80	1.0	Daytona, FL
150	2.0	Tampa, FL
200	3.0	Miami, FL
300	4.5	Savannah, GA