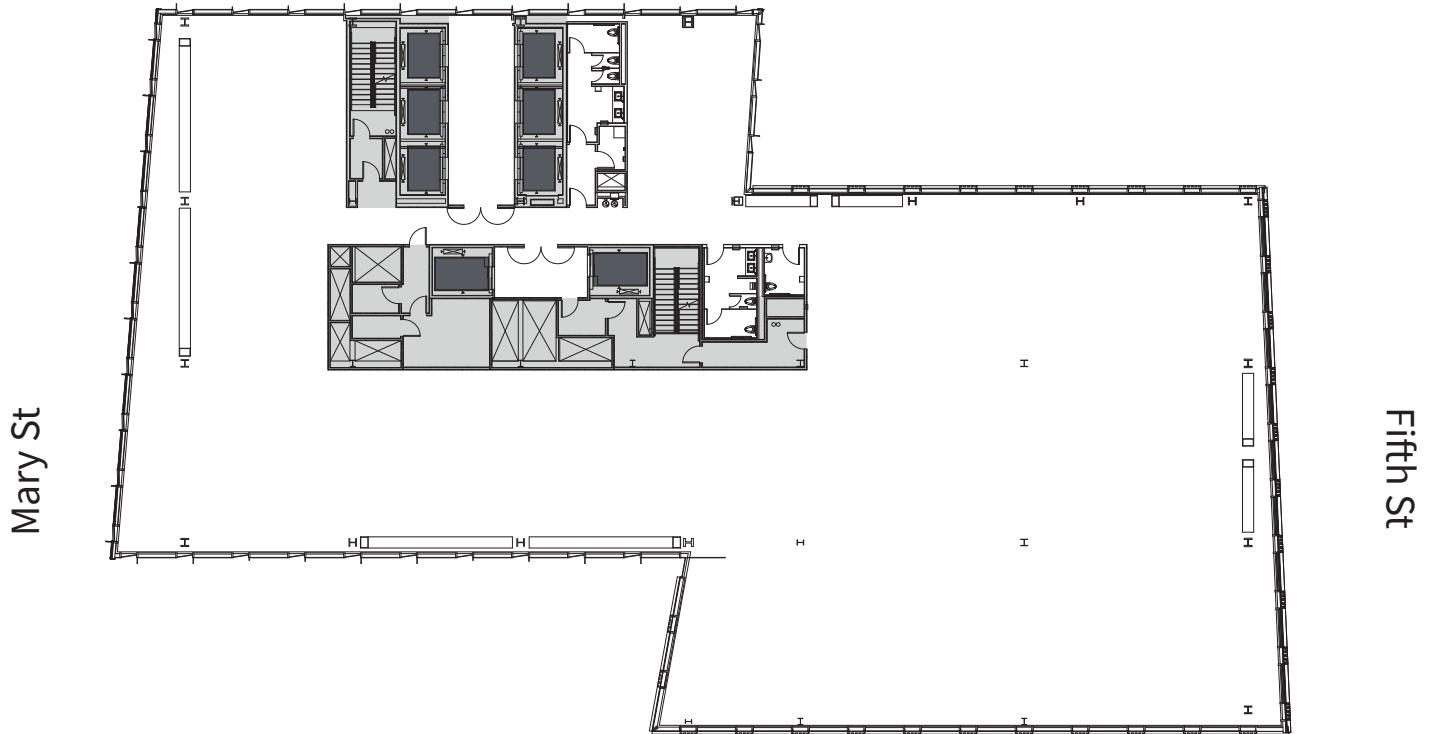


# 24th Floor

20,098 RSF

Natoma St



Mary St

Fifth St

Howard St



Matt Shewey

415 395 7255  
matt.shewey@jll.com  
RE License# 01445125

Chris Roeder

415 395 4971  
chris.roeder@jll.com  
RE License # 01190523

Charlie Hanafin

415 395 4951  
charlie.hanafin@jll.com  
RE License # 01277724

[www.5msf.com/work-at-415-natoma/](http://www.5msf.com/work-at-415-natoma/)