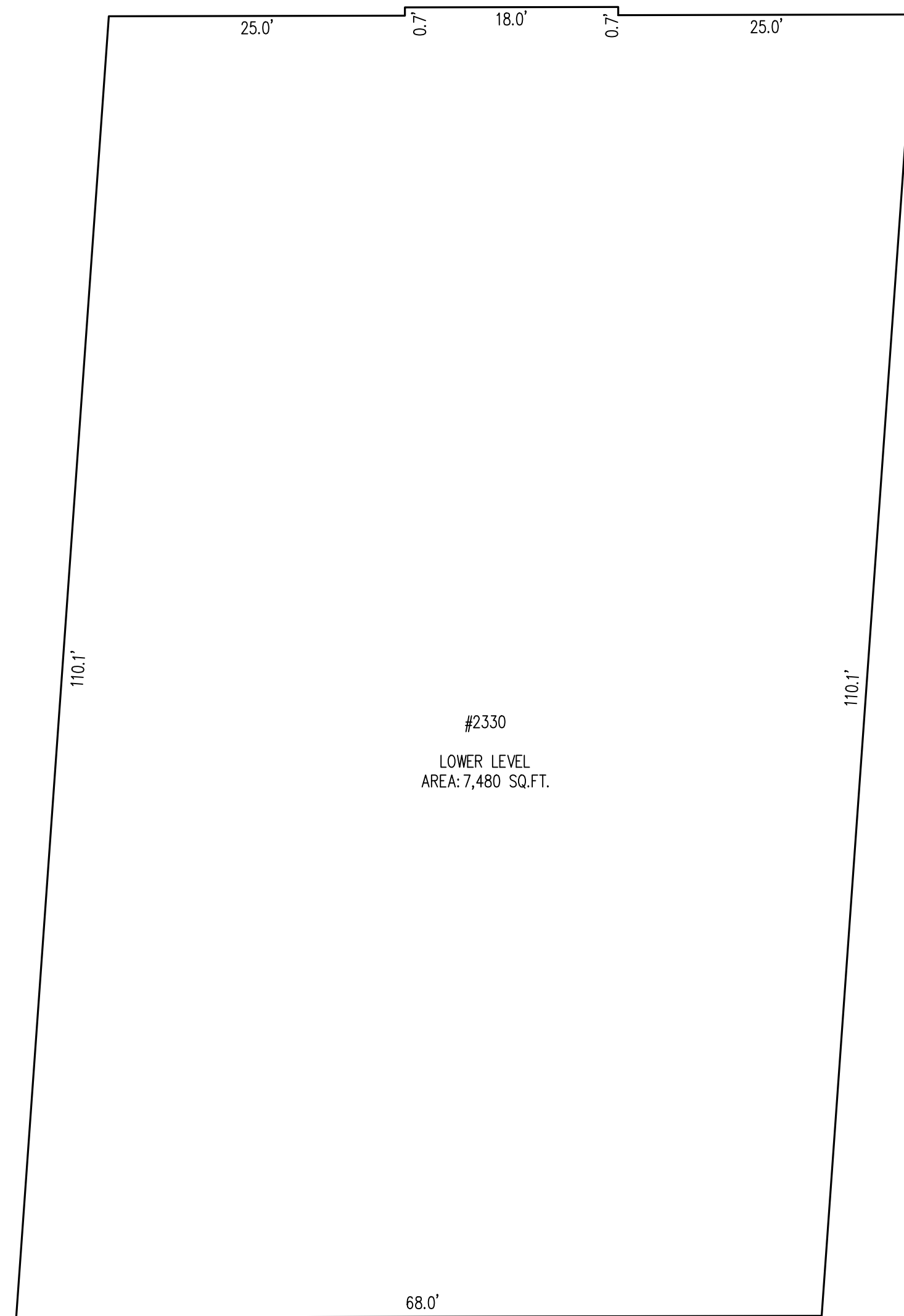


2330 COLUMBIA PIKE
UPPER LEVEL



2330 COLUMBIA PIKE
LOWER LEVEL

EXHIBIT
SHOWING UNIT AREA
THE PROPERTY OF
2400 COLUMBIA PIKE, LLC
ARLINGTON COUNTY, VIRGINIA

WALTER L. PHILLIPS INCORPORATED ESTABLISHED 1945	 	Engineers • Surveyors • Planners Landscape Architects • Arborists 207 PARK AVENUE FALLS CHURCH, VIRGINIA 22046 (703) 532-6163 Fax (703) 533-1301 www.WLPINC.com
	 	
SCALE: 1" = 10'	DATE: MAY 10, 2023	SHEET: 2 OF: 2