

OFFERING MEMORANDUM

914 E MARTIN LUTHER KING JR BLVD



LOS ANGELES, CA 90011

km Kidder
Mathews



TABLE OF CONTENTS

EXECUTIVE SUMMARY	01
PROPERTY OVERVIEW	02
FINANCIALS	03

*Exclusively
listed by*

CASEY LINS
Senior Vice President
213.225.7223
casey.lins@kidder.com
LIC N° 01902650

VINCENT COOK
Senior Associate
310.405.3654
vincent.cook@kidder.com
LIC N° 02012324

KIDDER.COM

**km Kidder
Mathews**

The information contained in the following Marketing Brochure is proprietary and strictly confidential. It is intended to be reviewed only by the party receiving it from Kidder Mathews and should not be made available to any other person or entity without the written consent of Kidder Mathews.

This Marketing Brochure has been prepared to provide summary, unverified information to prospective purchasers, and to establish only a preliminary level of interest in the subject property. The information contained herein is not a substitute for a thorough due diligence investigation. Kidder Mathews has not made any investigation, and makes no warranty or representation, with respect to the income or expenses for the subject property, the future projected financial performance of the property, the size and square footage of the property and improvements, the presence or absence of contaminating substances, PCB's or asbestos, the compliance with State and Federal regulations, the physical condition of the improvements thereon, or the financial condition or business prospects of any tenant, or any tenant's plans or intentions to continue its occupancy of the subject property. The information contained in this Marketing Brochure has been obtained from sources we believe to be reliable; however, Kidder Mathews has not verified, and will not verify, any of the information contained herein, nor has Kidder Mathews conducted any investigation regarding these matters and makes no warranty or representation whatsoever regarding the accuracy or completeness of the information provided. All potential buyers must take appropriate measures to verify all of the information set forth herein.

This information has been secured from sources we believe to be reliable. We make no representations or warranties, expressed or implied, as to the accuracy of the information. References to square footage or age are approximate. Recipient of this report must verify the information and bears all risk for any inaccuracies.

EXECUTIVE SUMMARY



We are proud to present 914 E Martin Luther King Jr Blvd, a recently repositioned 4-unit + ADU (5-units total) multifamily community operating at a 9.87 GRM and 7.29% CAP Rate on actual rents upon lease-up of the 2 VACANT and RENOVATED units, with upside to operate at an 8.50 GRM and an 8.88% CAP Rate at market rents.

This opportunity consists of two separate structures with a front 2-story 4-unit building built in 1948 as well as a rear newly constructed, standalone single-story home (ADU) totaling 2,651 rentable square feet situated on a 3,329 square foot LARD1.5 zoned midblock lot with a currently configuration offering uncovered onsite parking.

The unit mix consists of 4 two-bedroom units (one of which is a brand new ADU), with 2 UNITS DELIVERED VACANT (both 2-bedrooms)!

914 E Martin Luther King Jr Blvd is situated 10 minutes from Downtown Los Angeles, Ross Snyder Recreation Center, Gilbert Lindsay Recreation Center and just 3 minutes away from the closest large-chain grocer (Superior Grocers), providing tenants close proximity to numerous employment opportunities and tenant amenities

Contact Casey Lins at 714.333.6768 or Casey.Lins@kidder.com for additional information.

2,651

BUILDING SF

3,329

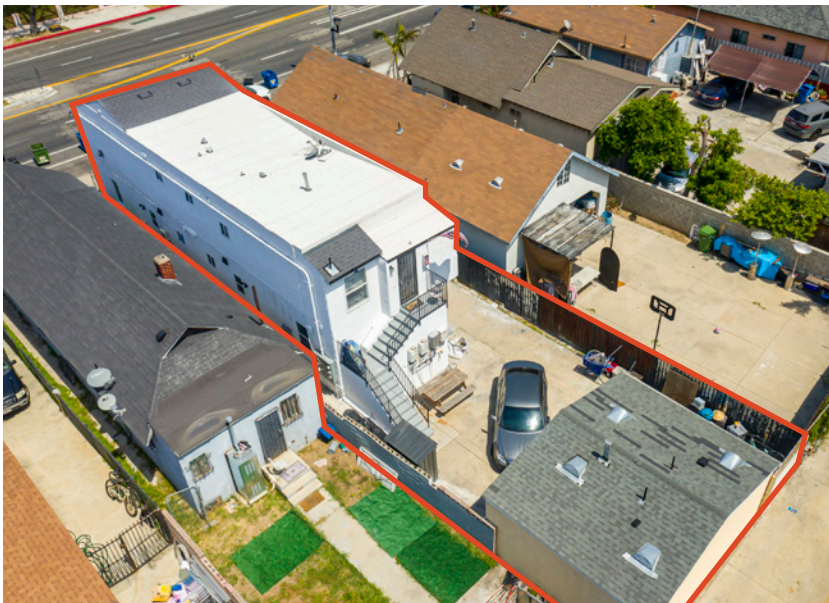
LOT SF

LARD1.5

ZONING

PROPERTY OVERVIEW

PROPERTY OVERVIEW



PROPERTY OVERVIEW



PROPERTY OVERVIEW

HUNTINGTON PARK

ROSS SNYDER RECREATION CENTER

THOMAS JEFFERSON HIGH SCHOOL



WADSWORTH AVE ELEMENTARY

CENTRAL AVENUE JAZZ PARK



914 E MARTIN LUTHER KING JR BLVD

E 35TH ST

WADSWORTH AVE

E MARTIN LUTHER KING JR BLVD



FINANCIALS

Section 03

FINANCIALS

INVESTMENT SUMMARY

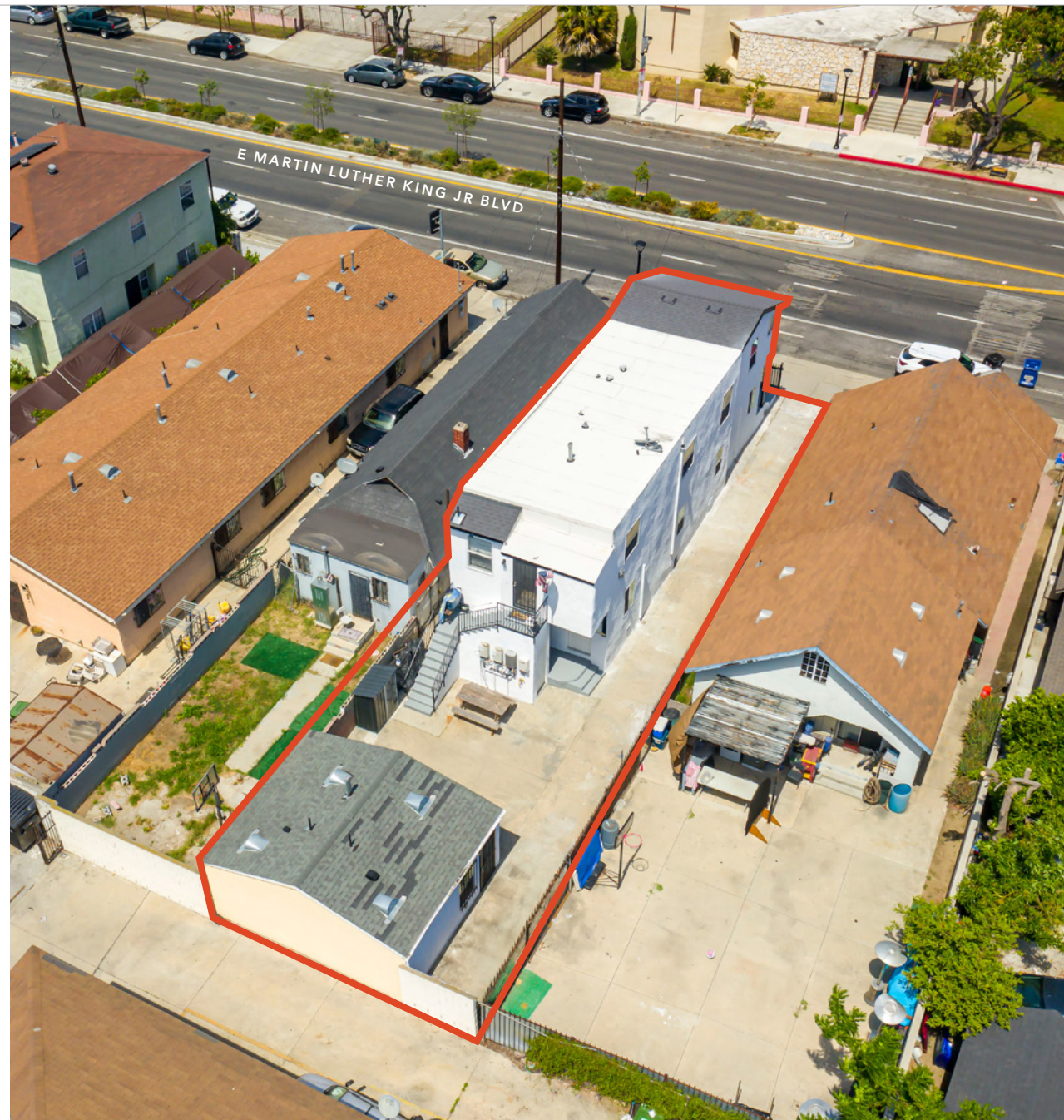
ADDRESS	914 E Martin Luther King Jr Blvd Los Angeles, CA 90011
LIST PRICE	\$1,285,000
NO. UNITS	5
COST PER UNIT	\$257,000
CURRENT GRM	9.87
MARKET GRM	8.50
CURRENT CAP	7.29%
MARKET CAP	8.88%
YEAR BUILT	1948
LOT SIZE	3,329 SF
BUILDING SIZE	2,651 SF
PRICE/SF	\$485

\$1.285M

LIST PRICE

7.29%

CAP RATE



FINANCIAL SUMMARY

ANNUALIZED OPERATING DATA

	Current Rents		Market Rents	
Scheduled Gross Income	\$130,139		\$151,200	
Less: Vacancy	(\$3,904)	3%	(\$4,536)	3%
Gross Operating Income	\$126,235		\$146,664	
Less: Expenses	(\$32,600)	25.8%	(\$32,600)	
Net Operating Income	\$93,635		\$114,064	

ESTIMATED OPERATING EXPENSES

	Current Rents	Market Rents
New Property Taxes - Estimate (1.1873%) + S.A.	\$15,700	\$15,700
Insurance - Estimate (\$1,200/Unit)	\$6,000	\$6,000
Maintenance/Repairs - Estimate (\$750/Unit)	\$3,750	\$3,750
Utilities - Estimate (\$1,000/Unit)	\$5,000	\$5,000
Grounds & Gardening - Estimate (\$75/Month)	\$900	\$900
Reserves/Miscellaneous (\$250/Unit)	\$1,250	\$1,250
Estimated Total Expenses	\$32,600	\$32,600
Per Net SF	\$12.30	\$12.30
Expenses Per Unit	\$6,520	\$6,520

SCHEDULED INCOME

Unit	Beds/Baths	Current Rents Monthly Rent/Unit	Market Rents Monthly Rent/Unit
914	2BD + 1BA - Vacant	\$2,650	\$2,650
914.5	2BD + 1BA - Vacant	\$2,650	\$2,650
916.5	2BD + 1BA	\$1,700	\$2,650
916.25	1BD + 1BA	\$2,046	\$2,000
916	2BD + 1BA	\$1,799	\$2,650
Monthly Scheduled Gross Income		\$10,845	\$12,600
Parking Income		-	-
Laundry Income		-	-
Total Monthly Scheduled Gross Income		\$10,845	\$12,600
Annual Scheduled Gross Income		\$130,139	\$151,200

This information has been secured from sources we believe to be reliable, but we make no representations or warranties, expressed or implied, as to the accuracy of the information. Buyer must verify the information and bears all risk for inaccuracies.

Exclusively listed by

CASEY LINS

Senior Vice President

714.333.6768

casey.lins@kidder.com

LIC N° 01902650

VINCENT COOK

Senior Associate

310.405.3654

vincent.cook@kidder.com

LIC N° 02012324

KIDDER.COM

