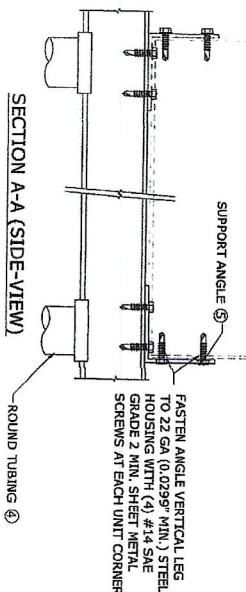


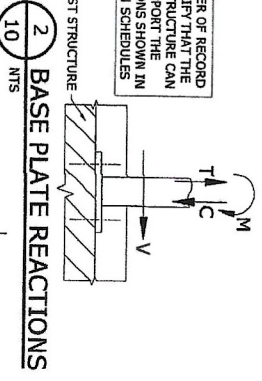
1A SUPPORT ANGLE ATTACHMENT DETAIL
 10 NTS



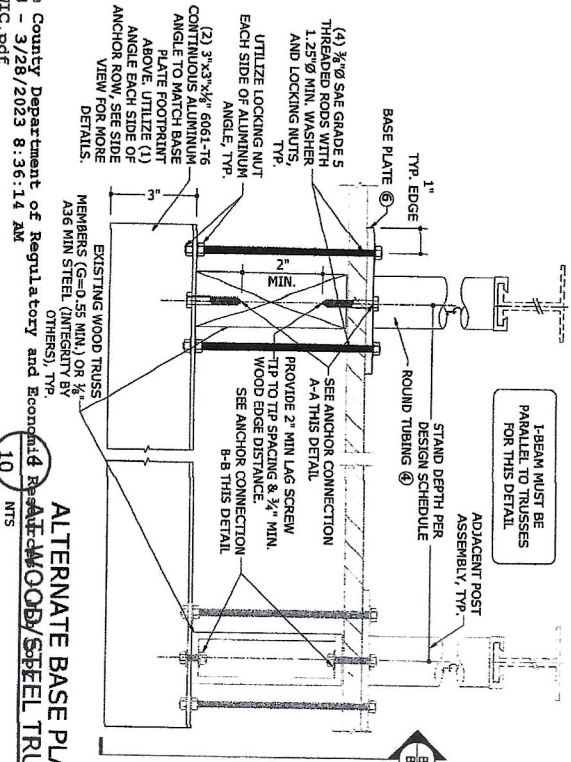
1B SUPPORT ANGLE ATTACHMENT DETAIL
 10 NTS

ENGINEER OF RECORD TO VERIFY THAT THE HOST STRUCTURE CAN SUPPORT THE REACTIONS SHOWN IN DESIGN SCHEDULES

PRODUCT REVISED as complying with the Florida Building Code, Expansion No. 17-1218-02 Expansion Date 01/13/2024
 By: Miami Date Product Control



2 BASE PLATE REACTIONS
 10 NTS



3 STANDARD BASE PLATE ATTACHMENT DETAIL
 10 NTS

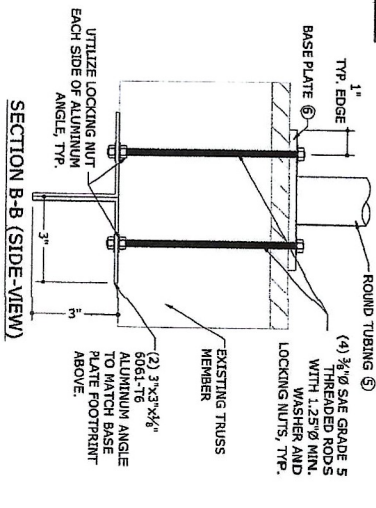
ANCHOR A-A (WOOD MEMBER) ADD (4) 3/8\"/>

ANCHOR B-B (STEEL MEMBER) ADD (4) 3/8\"/>

EXISTING WOOD TRUSS MEMBERS (G=0.55 MIN.) OR 1/2\"/>

FASTEN ANGLE VERTICAL LEG TO 22 GA. (0.0296\"/>

SECTION A-A (SIDE-VIEW)



3 STANDARD BASE PLATE ATTACHMENT DETAIL
 10 NTS

ANCHOR TYPE	HOST STRUCTURE	ANCHOR DESCRIPTION
1	STEEL	3/8\"/>
2	CONCRETE	3/8\"/>
3	WOOD	3/8\"/>
4	STEEL	3/8\"/>

ANCHOR NOTES:

- ANCHORS SHALL BE INSTALLED IN ACCORDANCE WITH MANUFACTURERS' RECOMMENDATIONS.
- ENSURE MINIMUM EDGE DISTANCE AS NOTED IN ANCHOR SCHEDULE FOR EACH ANCHOR.
- WOOD HOST STRUCTURE SHALL BE "SOUTHERN PINE" G=0.55 OR GREATER DENSITY. ALL CONCRETE SUBSTRATE SHALL BE UN-CRACKED CONCRETE AND SHALL HAVE MINIMUM COMPRESSIVE STRENGTH OF 3000 PSI. CONCRETE SUBSTRATE THICKNESS SHALL BE GREATER THAN OR EQUAL TO 1.5 ANCHOR EMBEDMENT. INSTALL CONCRETE ANCHORS TO UN-CRACKED CONCRETE ONLY.
- MINIMUM EMBEDMENT SHALL BE AS NOTED IN ANCHOR SCHEDULE. MINIMUM EMBEDMENT AND EDGE DISTANCE SHALL BE AS NOTED IN ANCHOR SCHEDULES. WHERE EXISTING STRUCTURE IS WOOD TRUSS, EXISTING CONDITIONS MAY VARY. FIELD VERIFY THAT FASTENERS ARE INTO ADJACENT WOOD TRUSS MEMBERS, NOT INTO PLYWOOD.

Miami Dade County Department of Regulatory and Economic Affairs
 302302
 NOA DOCS
 RJC.PDF
 Date: 12/29/2022 11:24:16 AM
 Trade Stamp Name: FERNANDEZ, UBALDO

15-2476
 SCALE: NTS
 PAGE DESCRIPTION: COVER SHEET
 10

MIAMI TECH, INC
 3611 NW 74TH STREET
 MIAMI, FL 33147
 PHONE: (305) 693-7054 FAX: (305) 693-6125
 ALUMINUM A/C STAND
 HVHZ COMPLAINT

ENGINEERING EXPRESS
 CORPORATE OFFICE:
 160 SW 12th AVE, SUITE 1006
 DEERFIELD BEACH, FL 33442
 P: (954) 354-0880 F: (954) 354-0443
 E: HELLO@ENGINEERINGEXPRESS.COM
 ENGINEERINGEXPRESS.COM
 CERT OF AUTH #9885



