



1850 GLENVIEW ROAD / GLENVIEW, IL

FOR LEASE



Conceptual Rendering / View Facing Southwest

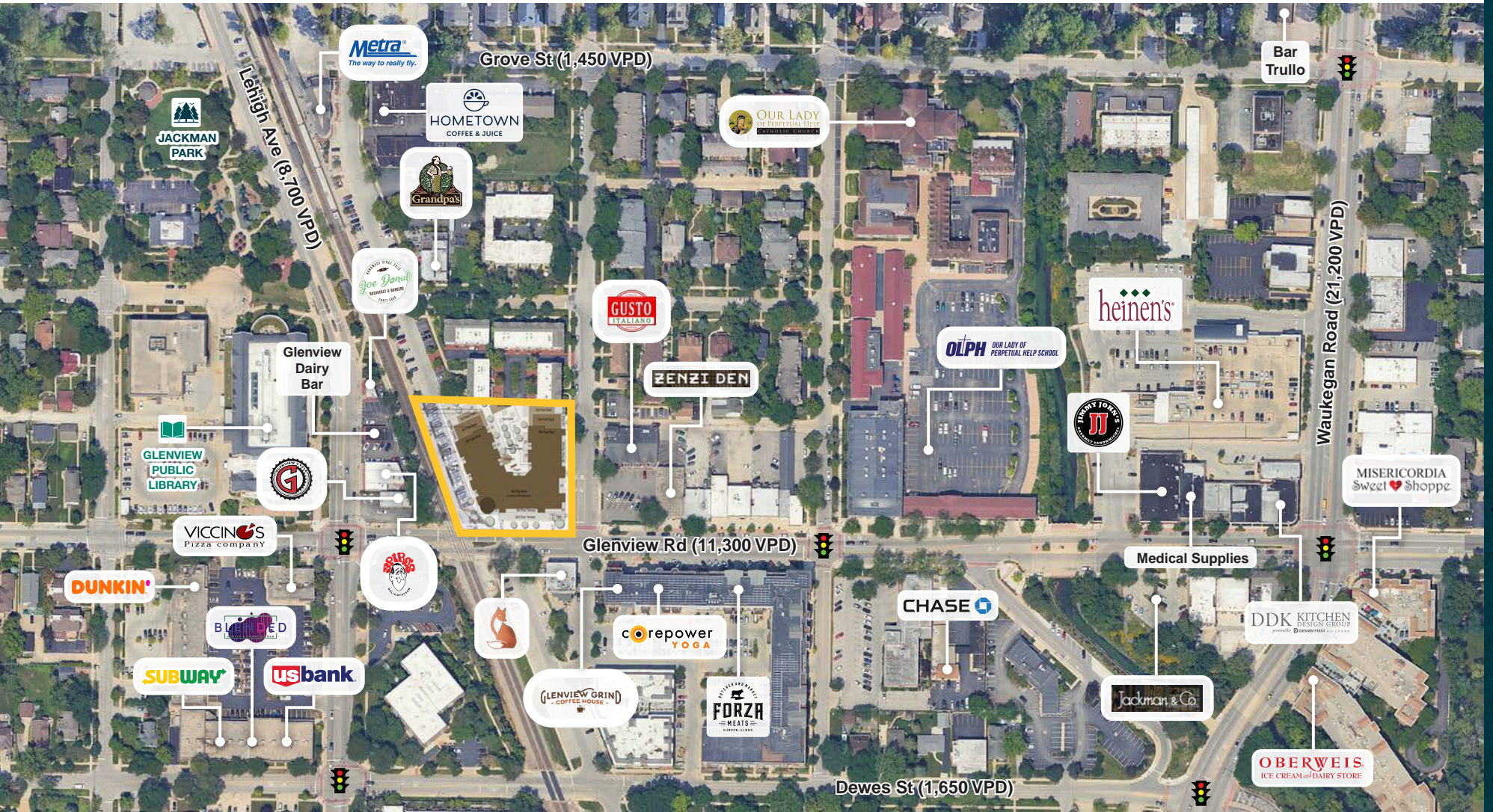
NEW RESTAURANT/RETAIL SPACE AT THE BASE OF A NEW 62-UNIT LUXURY BUILDING



RENDERING VIEW FACING SOUTHEAST



AERIAL





1850 GLENVIEW ROAD / GLENVIEW, IL

ADDRESS

1850 Glenview Road,
Glenview IL 60025

AVAILABILITY

1,684 SF on the Ground Floor

FEATURES

- Located in the heart of Downtown Glenview
- Retail Space at the Base of a Beautiful New Luxury Multi-Family Building
- Surrounded by an Incredible Lineup of New Restaurants Including Ballyhoo's Jackman & Co and Zenzi Den, Hometown Café, The Foxtail, and Bar Trullo
- Within Walking Distance from OLPH School (1,000+ Students), Glenview Library, Heinen's Grocery Store & The Glenview Metra Station
- Incredible Opportunity to Join one of the Best Suburban Downtown's on Chicago's North Shore

NEIGHBORING TENANTS



ZENZI DEN



Jackman & Co.



DEMOGRAPHICS

	1M	3M	5M
AVG HOUSEHOLD INCOME	\$207,671	\$159,284	\$168,999
POPULATION	12,857	112,932	323,575
DAYTIME POPULATION	13,308	129,146	381,190





Glenview Public Library

Joe Donut
HANDMADE SINCE 2010
BREAKFAST & BURGERS
CRAZY GOOD

Metra
The way to really fly.

Glenview Train Station

HOMETOWN
COFFEE & JUICE

Grandpa's



GLENVIEW GRIND
COFFEE HOUSE

corepower
YOGA

BUTCHER BRAND MARKET
FORZA
MEATS
GLENVIEW, ILLINOIS

SITE

Pine Street

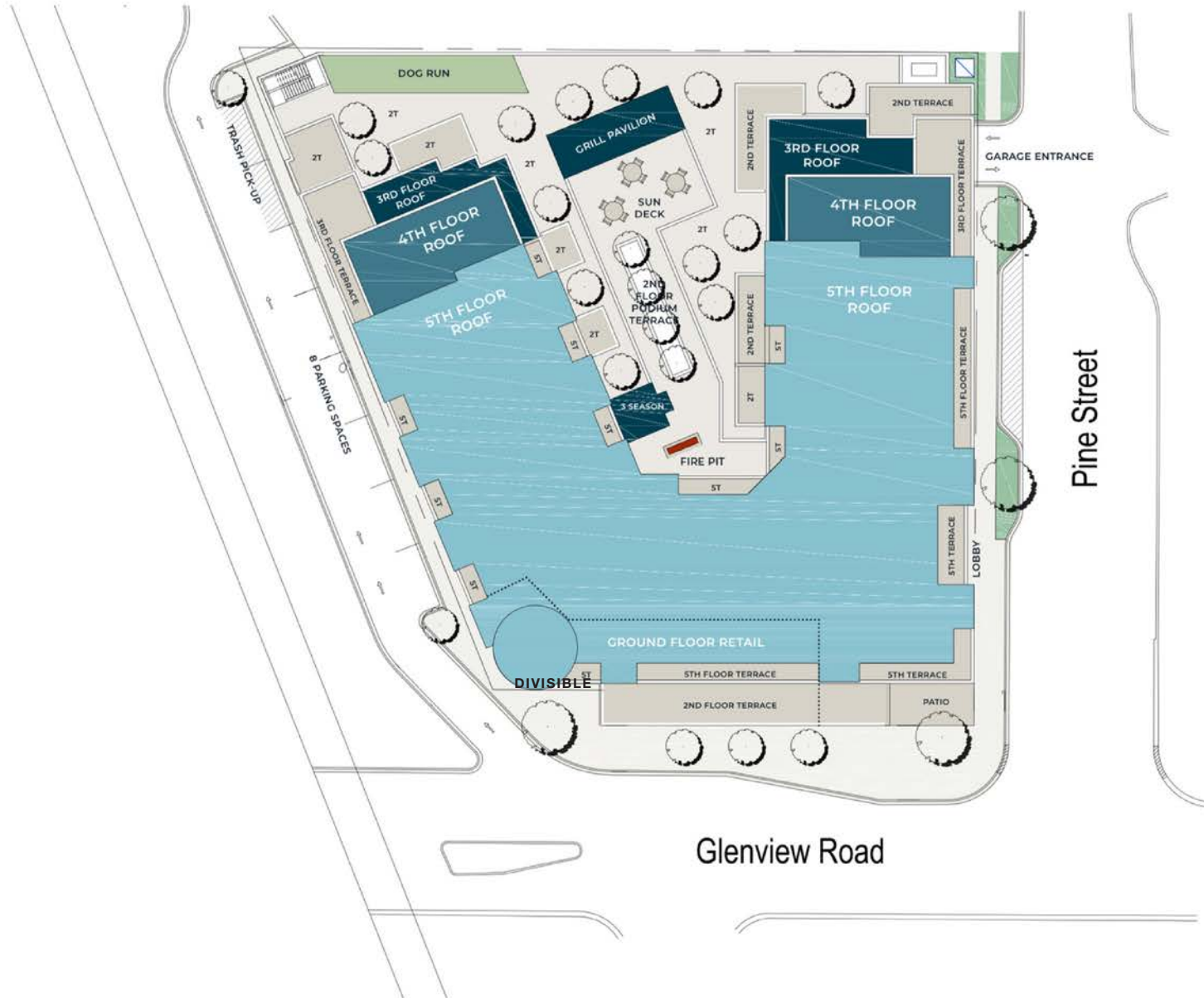
GUSTO
ITALIANO
DINING

ZENZI DEN

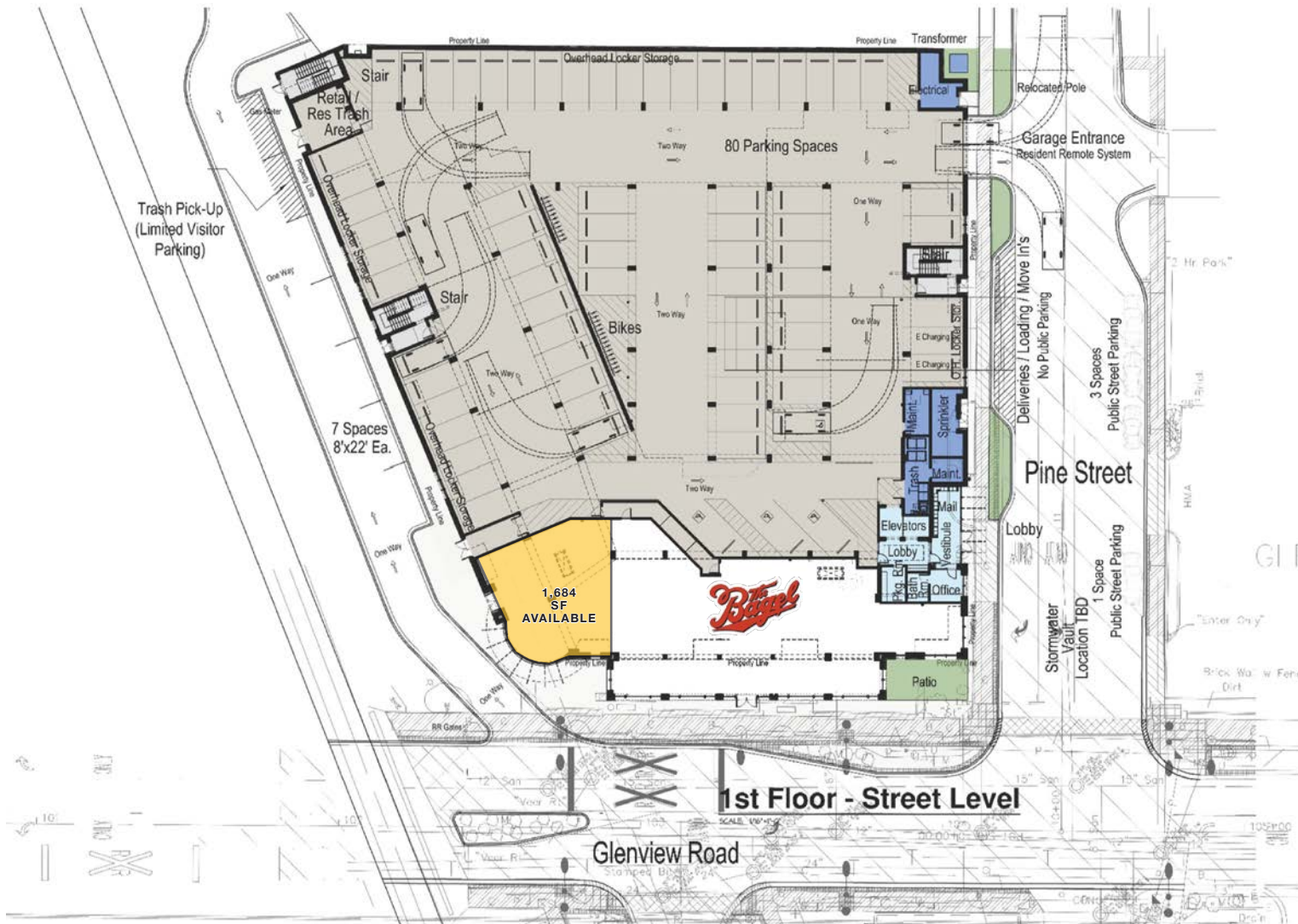
Glenview Rd (11,300 VPD)



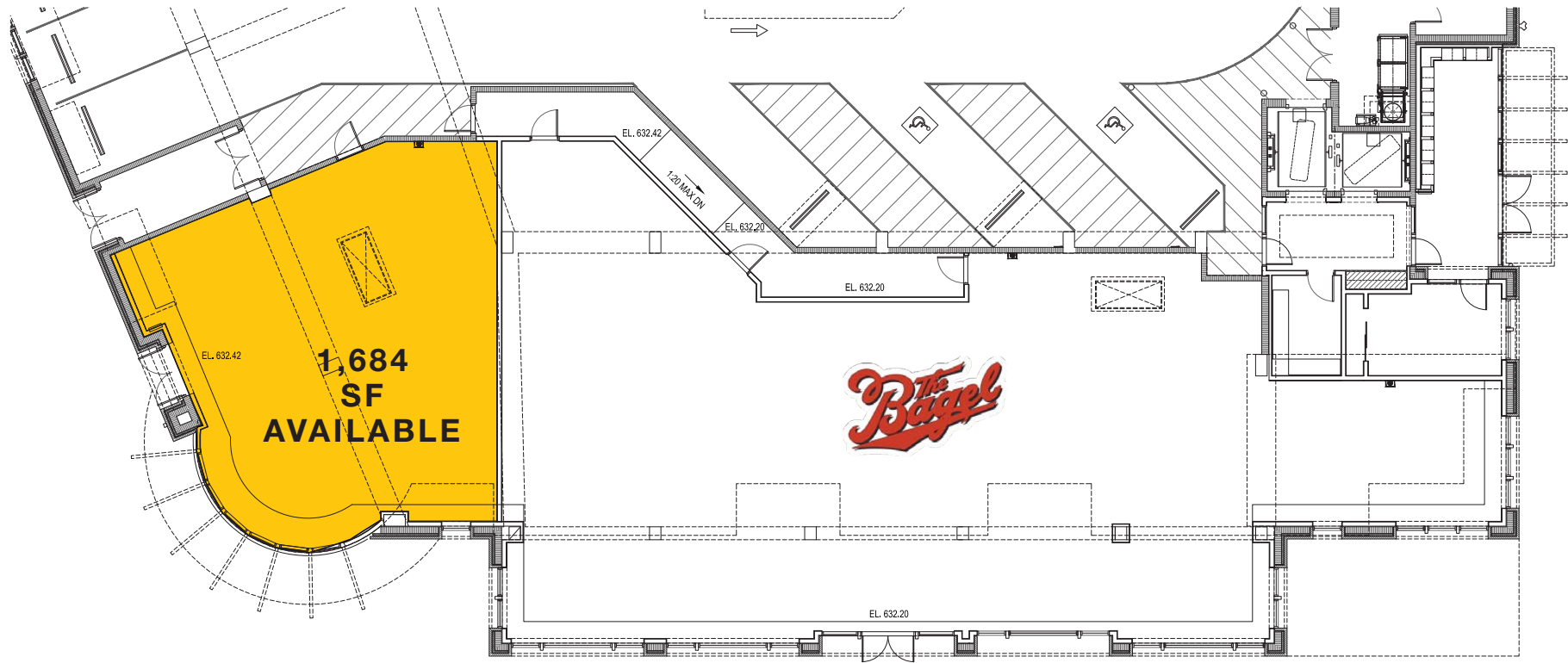
SITE PLAN



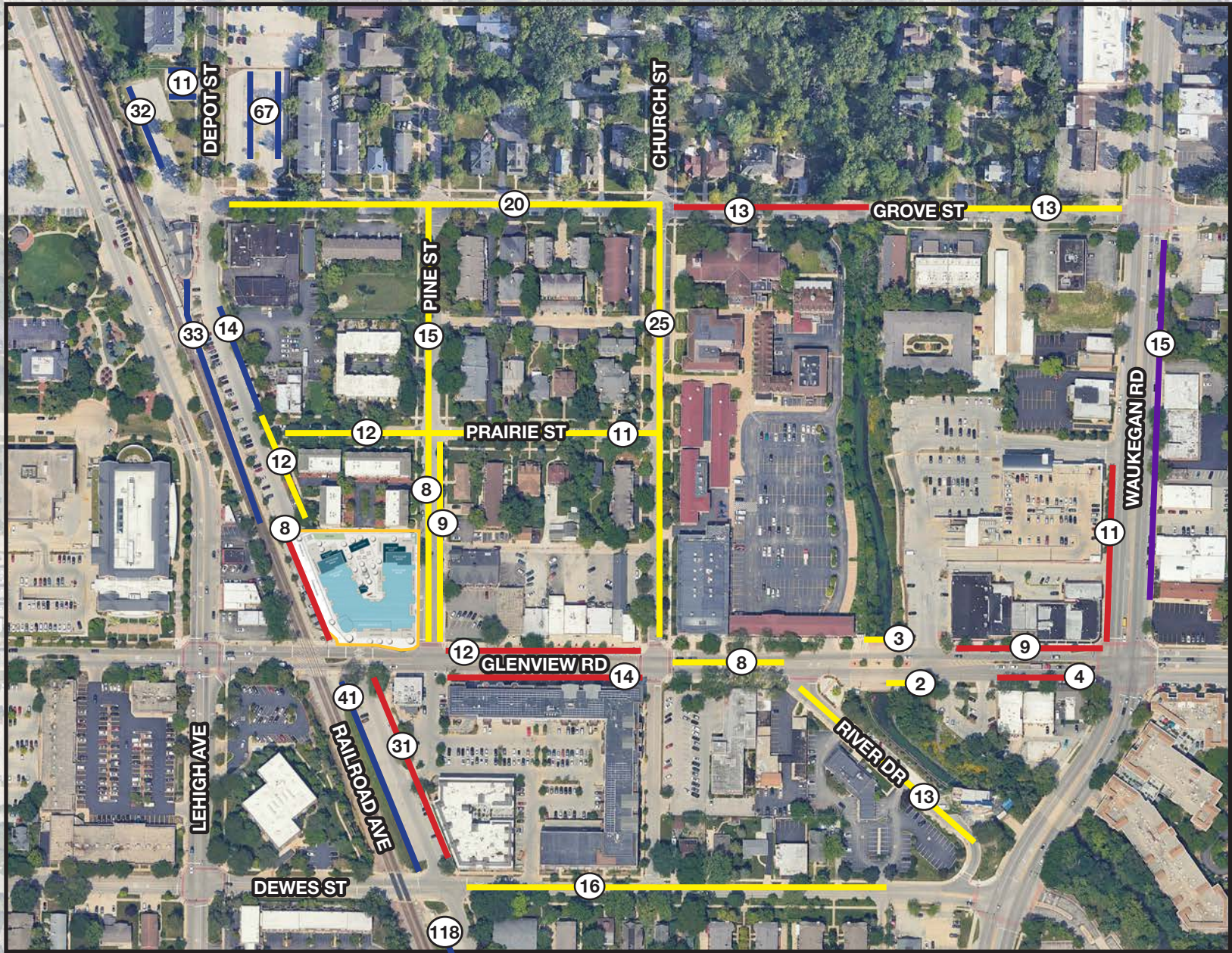
STREET LEVEL PLAN



RETAIL PLAN



EXISTING STREET PARKING



LEGEND

- NO RESTRICTION
- 1 HOUR PARKING
- 2 HOUR PARKING
- METRA NO RESTRICTIONS AFTER 11AM





1850 GLENVIEW ROAD / GLENVIEW, IL

BRENDAN REEDY

630.954.7390

BReedy@MidAmericaGrp.com

JIMMY DANAHER

630.954.7238

JDanaher@MidAmericaGrp.com

GRIFFIN FLEMING

630.954.7320

GFleming@MidAmericaGrp.com



410 N Michigan Ave
Suite 1100
Chicago, Illinois 60611
630.954.7327
MidAmericaGrp.com

