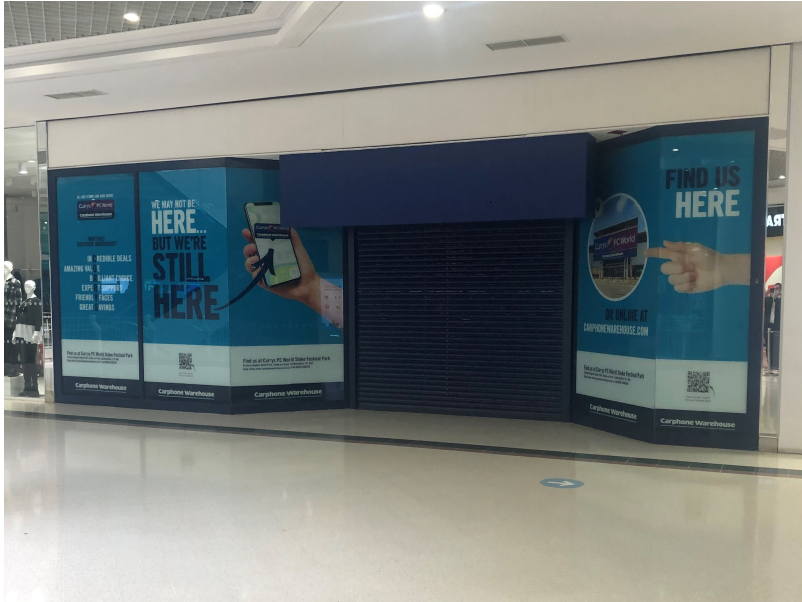


# The Potteries Shopping Centre Hanley

Unit 126



## SHOP TO LET

### LOCATION

The Potteries Shopping Centre provides the focus for the prime retail shopping destination for Stoke on Trent. The scheme comprises a mix of retail and leisure, incorporating 94 units over 636,000 sq ft with 1,200 car parking spaces on site. The Centre is anchored by **Primark, Next, H&M** and **River Island** amongst others.

### SITUATION

The unit is located in the Middle Mall with neighbouring occupiers including **Primark, JD Sports, Pandora, Superdry** and **River Island**.

### LEASE

The premises are available by way of a new lease for a term to be agreed.

### RENT

On Application

### LEGAL COSTS

Each party to be responsible for their own legal costs.

### EPC

A copy of the Energy Performance Certificate is available on request.

### ACCOMMODATION

Ground Floor	1,561 sq ft	145 sq m
First Floor	708 sq ft	66 sq m

### BUSINESS RATES & SERVICE CHARGE

Rateable Value (2023)	£65,000
Service Charge (2022)	£37,069

This information is for guidance only. Interested parties are advised to verify figures with the local authority.

### VIEWING

For further information or to arrange a viewing, please contact:

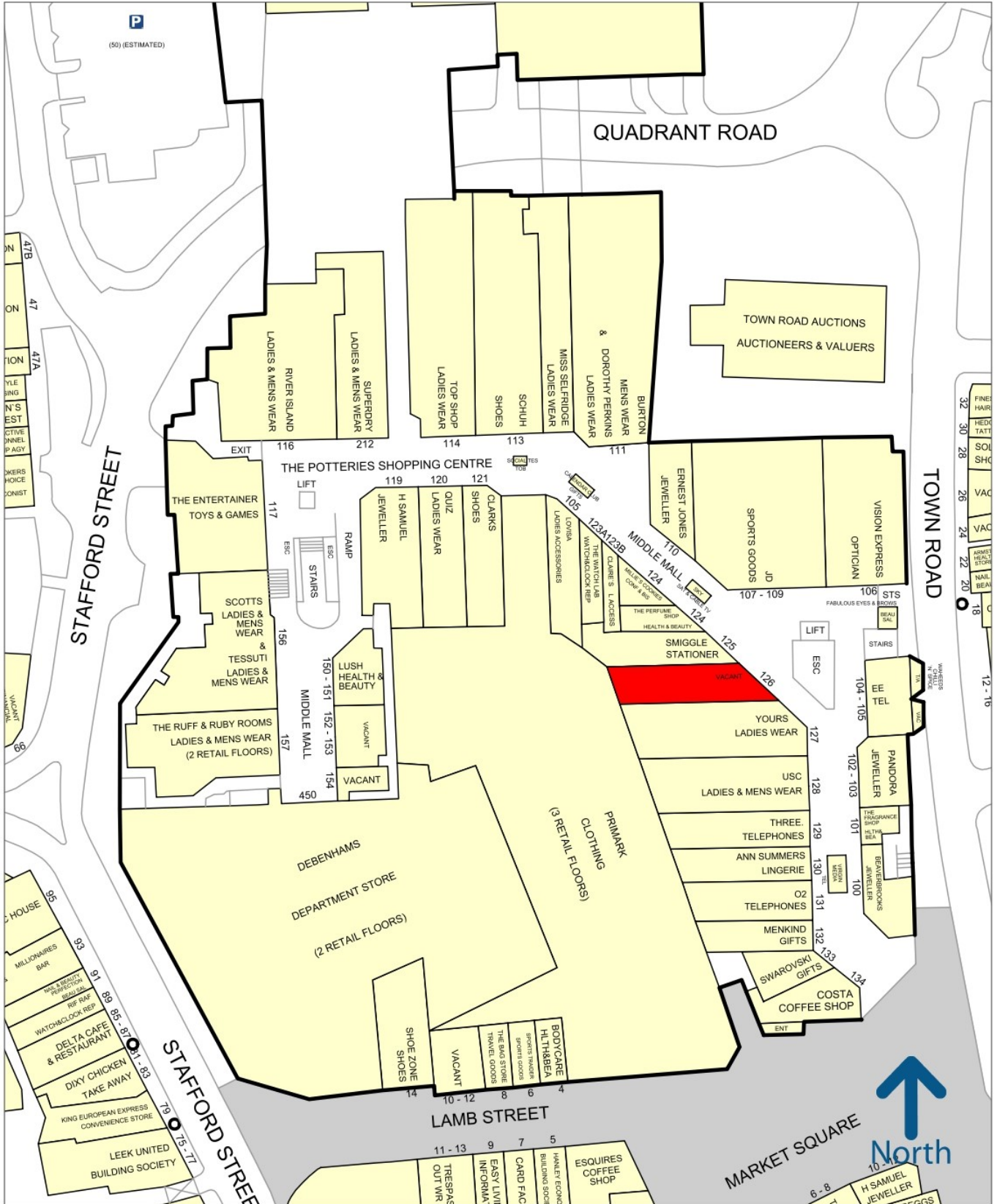
#### BWD

Richard Bidwell  
07747534357  
rbidwell@bwdretail.co.uk

or joint agents:

#### Barker Proudlove

0161 631 2852



50 metres

Experian Goad Plan Created: 02/03/2021  
Created By: Bidwell Webber De Pons Ltd



Copyright and confidentiality Experian, 2020. © Crown copyright and database rights 2020. OS 100019885

For more information on our products and services:  
www.experian.co.uk/goad | goad.sales@uk.experian.com | 0845 601 6011