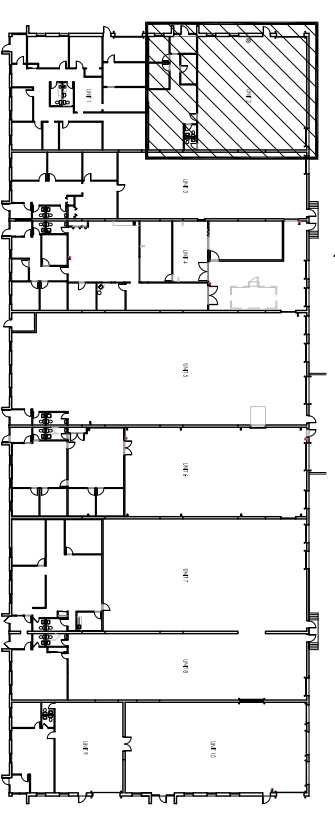


1 EXISTING OFFICE PLAN
 EC-1 SCALE: 1/8" = 1'-0"



TOTAL - 3,577 SF
OFFICE - 1,077 SF
WAREHOUSE - 2,500 SF

The Flynn Company
 Real Estate Development
 Brokerage
 Management
 1621 Wood Street
 Philadelphia, PA
 P-(215) 561-6565
 F-(215) 561-5025

NOTE:

- THIS DRAWING IS INTENDED FOR MARKETING PURPOSES ONLY.
- ALL DIMENSIONS SHOULD BE FIELD VERIFIED.
- THE FIRM COMPANY IS NOT RESPONSIBLE FOR THE ACCURACY OF THIS DRAWING.

EXISTING CONDITIONS PLAN
603 HERON - UNIT 2
LOGAN TOWNSHIP, NJ

EC-1
 Rev: N/A
 March 22, 2018