

# 1711

SOUTH BROAD STREET

**OFFICE SPACE  
AVAILABLE FOR LEASE!**

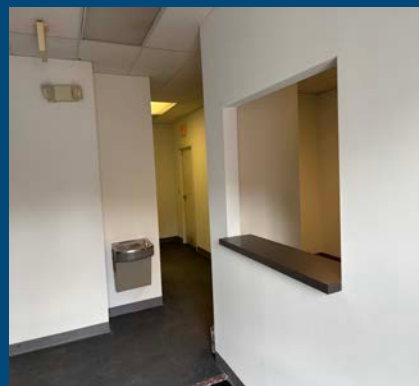
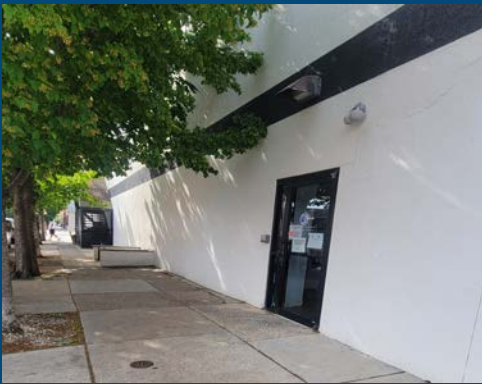
## PROPERTY HIGHLIGHTS

### GROUND FLOOR - +/- 2,002 RSF

- Private Castle St. entrance
- Combination of open space private offices and reception area
- Security system in place
- Broad Street Subway on corner
- Short walk to Passyunk Square amenities
- Perfect for various uses including Yoga Studio or Fitness Center
- Food Point Market on ground floor



CASTLE STREET ENTRANCE



QUINN FREDERICK



Ph: 215-496-9675 ext. 16



QLF@PERNAFREDERICK.COM



PERNAFREDERICK  
COMMERCIAL REAL ESTATE

PERNA FREDERICK COMMERCIAL REAL ESTATE  
1500 JFK Blvd, Suite 1520 | Philadelphia, PA 19102  
215-496-9675 | [www.pernafrederick.com](http://www.pernafrederick.com)

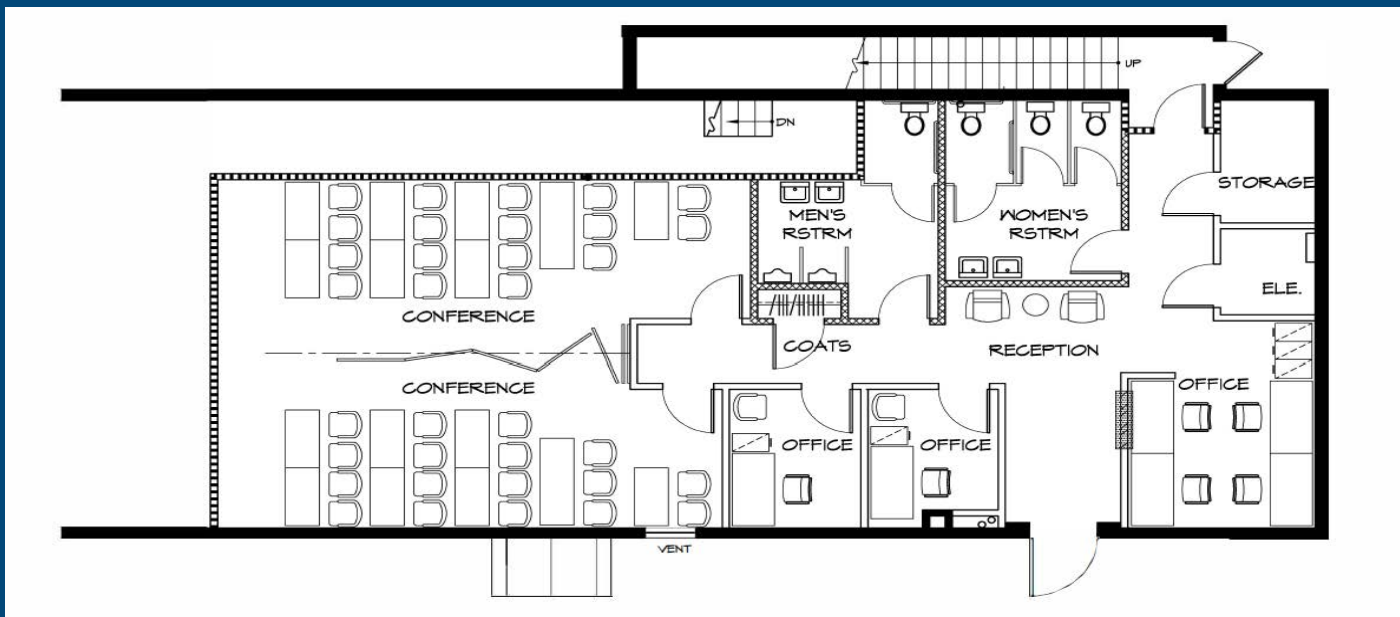
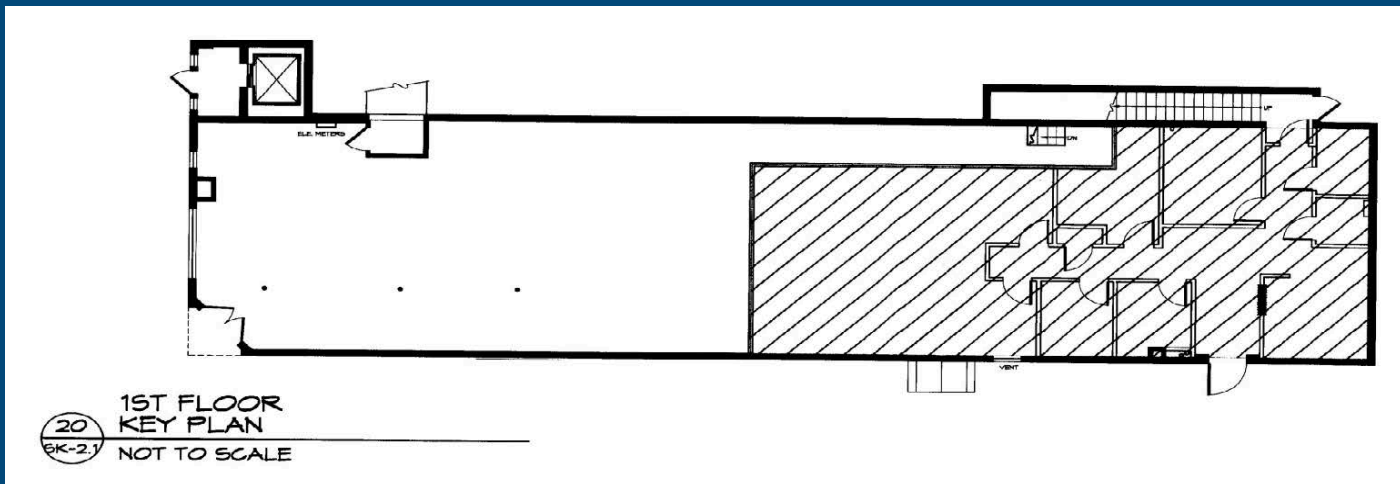
# 1711

SOUTH BROAD STREET

## FLOOR PLANS



### 1<sup>st</sup> FLOOR / 2,002 SF



QUINN FREDERICK



Ph: 215-496-9675 ext. 16



QLF@PERNAFREDERICK.COM



PERNAFREDERICK  
COMMERCIAL REAL ESTATE

PERNA FREDERICK COMMERCIAL REAL ESTATE  
1500 JFK Blvd, Suite 1520 | Philadelphia, PA 19102  
215-496-9675 | www.pernafrederick.com