

694 Sackett Street

4th Avenue | 5th Avenue PARK SLOPE | BROOKLYN



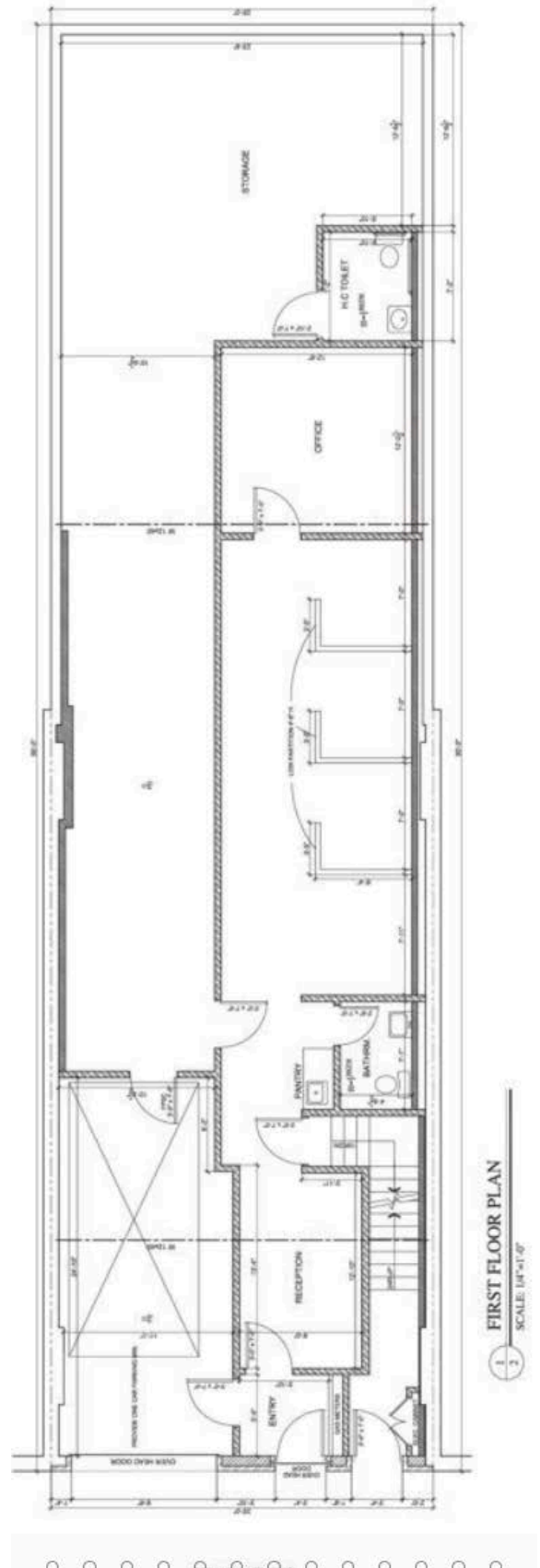


A must-see, move-in ready location on Sackett Street between 4th and 5th Avenues in Park Slope. Currently set up as an office plus parking for 4 vehicles. The space is column free and can be configured as open loft-like space for unlimited uses.

Facts and Features

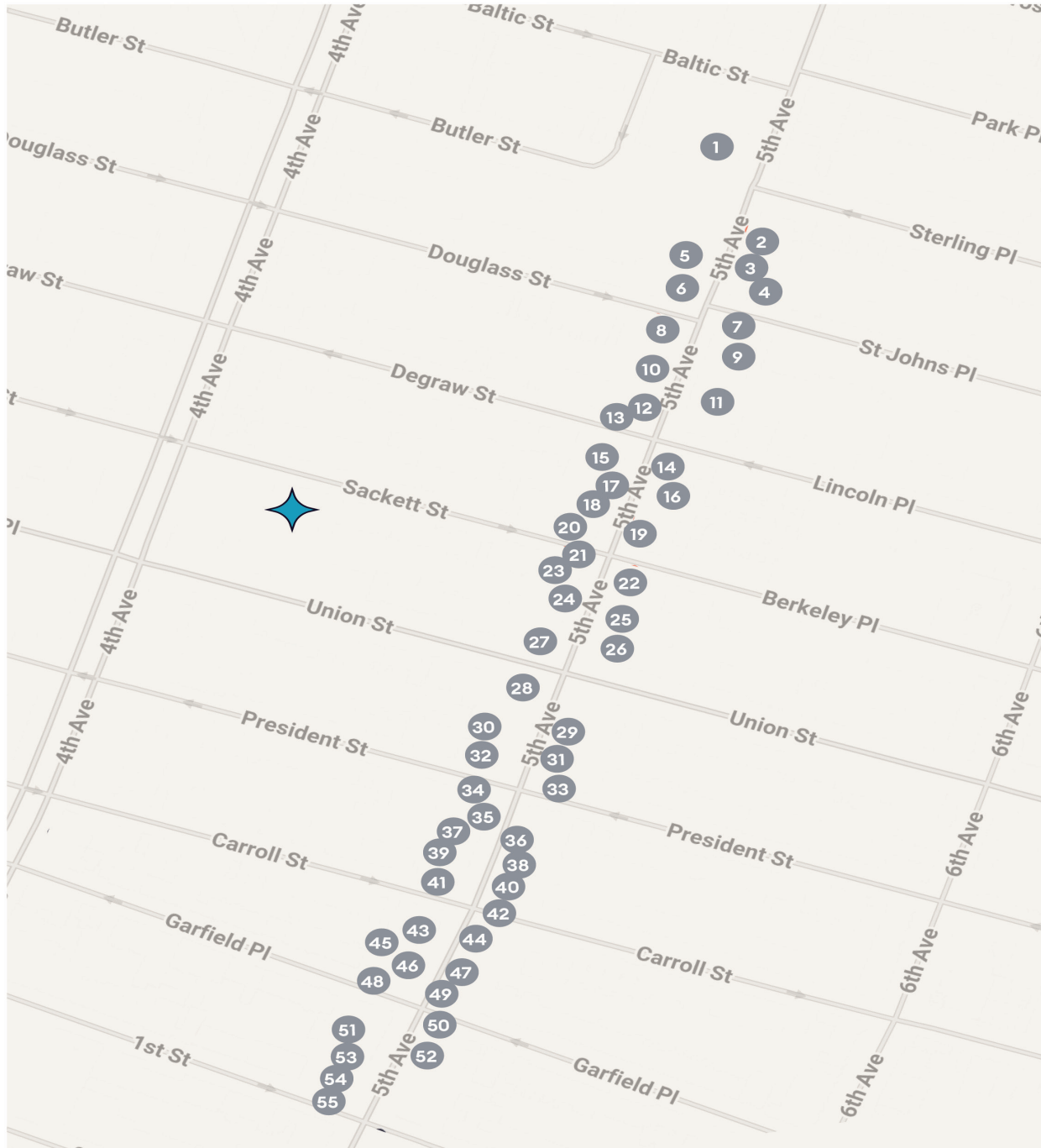
Size: 2,375-SF * Column Free Space
Frontage: 25' Ceiling Height 13'
Depth: 95' All Uses Considered

Currently set up as office space plus parking for four vehicles



Neighboring Retailers

1. CVS/WELLS FARGO/ALDI
2. KIDS CLUB
3. JERSEY MIKE'S
4. MITI MITI
5. MEDUSA GREEK
6. BROOKLYN FRAMEWORKS
7. WHOLESOME BITES
8. WILD PARK SLOPE
9. BOGOTA LATIN BISTRO
10. THE V SPOT
11. KYRAMEN
12. BRICOLAGE
13. PARK CHEMISTS
14. KIKU
15. FLOWER SHOP
16. K SKINCARE
17. PURE BARRE
18. HAPPY CLEANERS
19. MR BAO
20. THE PAINTED POT
21. DOUGLAS ELLIMAN
22. KONDITORY
23. WINNER
24. BLUEPRINT
25. KATSU
26. VOLARE ESPRESSO
27. SOMETHING ELSE
28. DIME SAVINGS BANK
29. GENTLE DENTAL
30. RIPPED BODICE
31. GEEK SHOP
32. DNA FOOTWEAR
33. MEZCAL
34. SHAKING CRAB
35. ANNIES GENERAL STORE
36. SLOPE HOME
37. ASSOCIATED SUPERMARKET
38. TUTU DANCE SCHOOL
39. NUT FACTORY
40. PRIVATE PICASSO
41. AL DI LA
42. HAYNEO
43. NEGRIL
44. HIGH DIVE
45. EVIL TWIN COMICS
46. BUTTERMILK BAKESHOP
47. FJORD FISH MARKET
48. HOUSING WORKS
49. KOS CAFE
50. BROOKLYN BURGER BEER
51. REEDCHY SPA
52. LA VILLA
53. BONNIES GRILL
54. CALEXICO
55. TWO BOOTS PIZZA



FOR FURTHER INFORMATION, PLEASE CONTACT:

Jeffrey Kessler

Lic. Assoc. R.E. Broker
 O 718.840.2000
 M 914.391.7689
 jeffrey.kessler@elliman.com



575 MADISON AVENUE, NY, NY 10022. 212.891.7000 © 2024 DOUGLAS ELLIMAN REAL ESTATE. ALL MATERIAL PRESENTED HEREIN IS INTENDED FOR INFORMATION PURPOSES ONLY. WHILE THIS INFORMATION IS BELIEVED TO BE CORRECT, IT IS REPRESENTED SUBJECT TO ERRORS, OMISSIONS, CHANGES OR WITHDRAWAL WITHOUT NOTICE. ALL PROPERTY INFORMATION, INCLUDING, BUT NOT LIMITED TO SQUARE FOOTAGE, ROOM COUNT, NUMBER OF BEDROOMS AND THE SCHOOL DISTRICT IN PROPERTY LISTINGS SHOULD BE VERIFIED BY YOUR OWN ATTORNEY, ARCHITECT OR ZONING EXPERT. EQUAL HOUSING OPPORTUNITY.