

1080 W BRADLEY AVE, STE A

FOR LEASE | ± 7,600 SF INDUSTRIAL WAREHOUSE & OFFICE



CONTACT AGENT FOR DETAILS

AIDAN JAMES
aidan.james@ip-cre.com
619.631.8661
Lic. #02060510


JAMES RENNER
jrenner@ip-cre.com
619.518.5444
Lic. #01308083

SHAYAN BAHRI
shayan.bahri@ip-cre.com
818.292.4657
Lic. #02149868



PROPERTY HIGHLIGHTS

 1080 W Bradley Ave, Suite A, El Cajon CA 92020

 ± 5,045 SF Office; ± 2,555 SF Warehouse
(Convertible to 6,100 SF Warehouse;
1,500 SF Office)

 Ample Parking

 Sprinklered

 Lease Rate: \$1.50 PSF + NNN

 Proximity to I-8, 67, 52 & I25

 Ceiling Height: ± 19.5'

 Convenient to Trolley

 Ground Level Doors: 2 (12' x 14')

 Zoning: M-ZONE EL CAJON

 Highly Visible Signalized Intersection of W Bradley & N Marshall Avenues

Information herein has been obtained from sources deemed reliable, however its accuracy cannot be guaranteed. The user is required to conduct their own due diligence and verification.

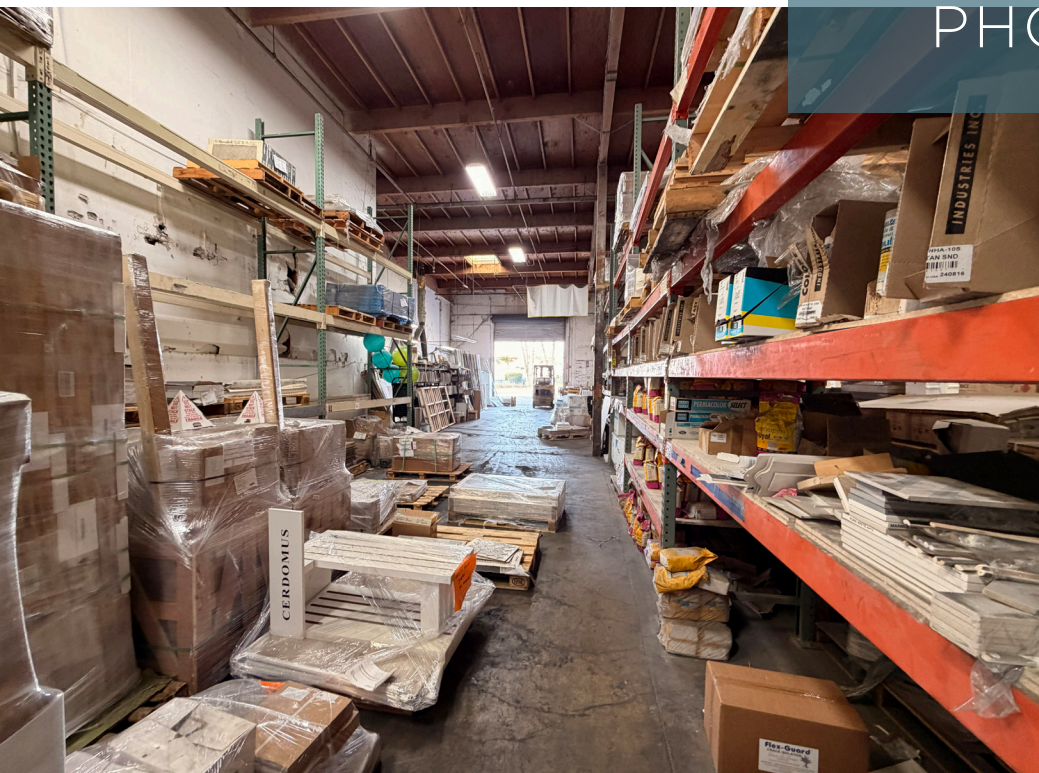


— PROPERTY
PHOTOS —

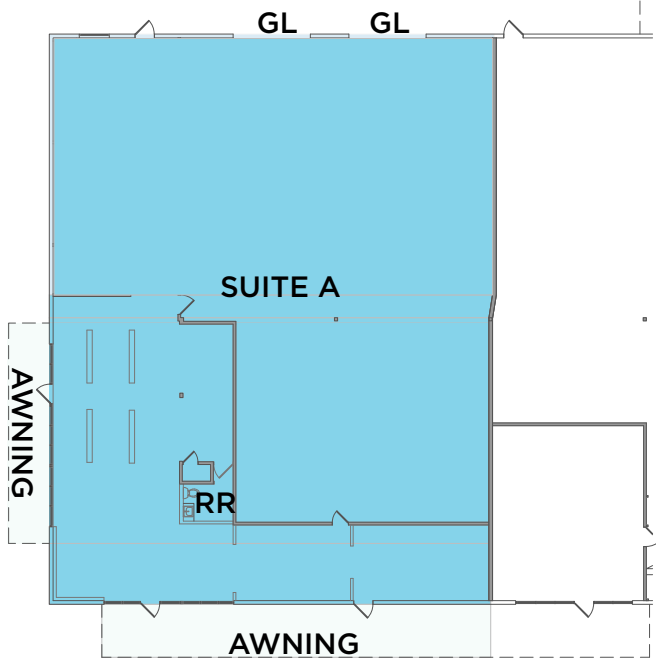




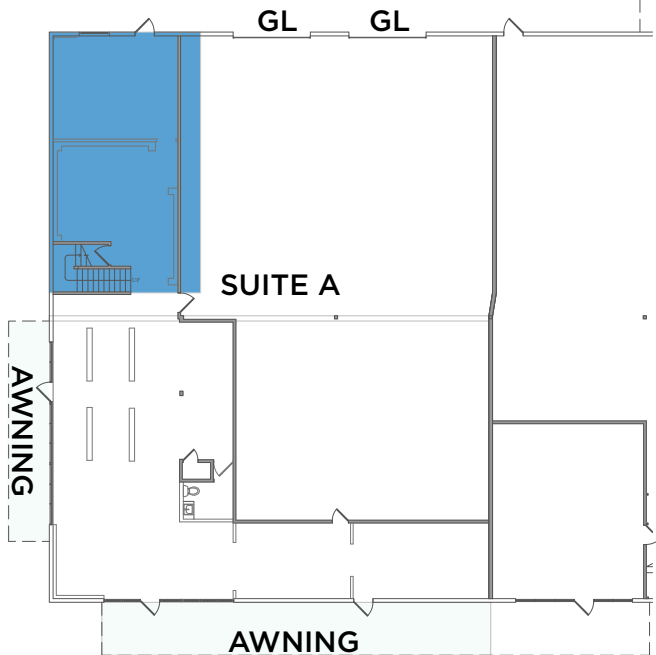
— PROPERTY
PHOTOS —



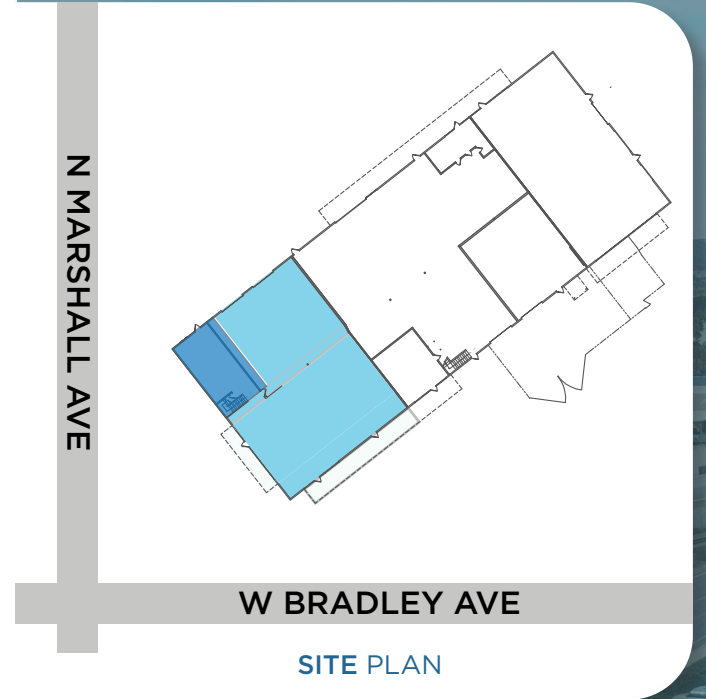
FLOOR PLAN



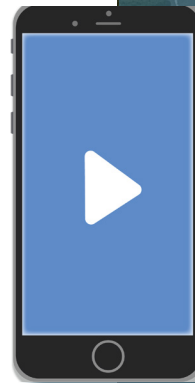
FIRST FLOOR



SECOND FLOOR (OFFICE)



SITE PLAN



VIDEO TOUR

Information herein has been obtained from sources deemed reliable, however its accuracy cannot be guaranteed. The user is required to conduct their own due diligence and verification.

GL = GROUND LEVEL DOOR



1080 W BRADLEY AVE, STE A

AMENITIES MAP

- Chick-fil-A
- Starbucks
- Epic Wings
- Subway
- Phil's BBQ
- Chipotle
- Taco Bell
- Jersey Mike's
- Chevron
- USPS
- 7-Eleven
- O'Reilly
- Costco
- Vons
- Sprouts
- Lowe's
- UPS Store
- Target
- Chase Bank
- Union Bank
- Verizon
- AT&T
- T-Mobile
- AutoZone

1080
W BRADLEY AVE

- In-N-Out
- Urbane Cafe
- Dunkin'
- KFC
- McDonald's
- Panera Bread
- Burger King
- Jamba Juice
- Five Guys
- Texas Roadhouse
- Home Depot
- Walmart
- CVS
- Best Buy
- Smart & Final
- Bank of America
- Mission Federal
- Wells Fargo
- Navy Federal

FOR MORE INFORMATION PLEASE CONTACT

AIDAN JAMES
aidan.james@ip-cre.com
619.631.8661
Lic. #02060510

JAMES RENNER
jrenner@ip-cre.com
619.518.5444
Lic. #01308083

SHAYAN BAHRI
shayan.bahri@ip-cre.com
818.292.4657
Lic. #02149868



Information herein has been obtained from sources deemed reliable, however its accuracy cannot be guaranteed. The user is required to conduct their own due diligence and verification.