

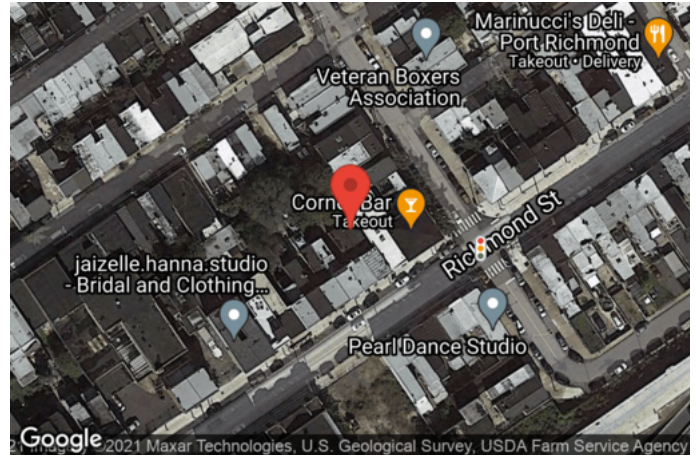


3062 Richmond 1F [Pangea Layout]

Prepared by
Pangea United Group

Created on

Location
3062 Richmond Street
19134 Philadelphia
PA
USA



| | | | |
|------------------------------------|--------------------|-------------------|------------------------|
| Total area 1511.90 sq ft | Floors 1 | Rooms 1 | Conf. room 0 |
|------------------------------------|--------------------|-------------------|------------------------|

Status
For Rent

Property Type
Select

Price
2,500

Security Deposit
2,500

Electricity Included
Yes

Water Included
Yes

Wi-Fi
No

Year Built
2020

Suitable for
Commercial Purpose

3062 Richmond 1F [Pangea Layout]

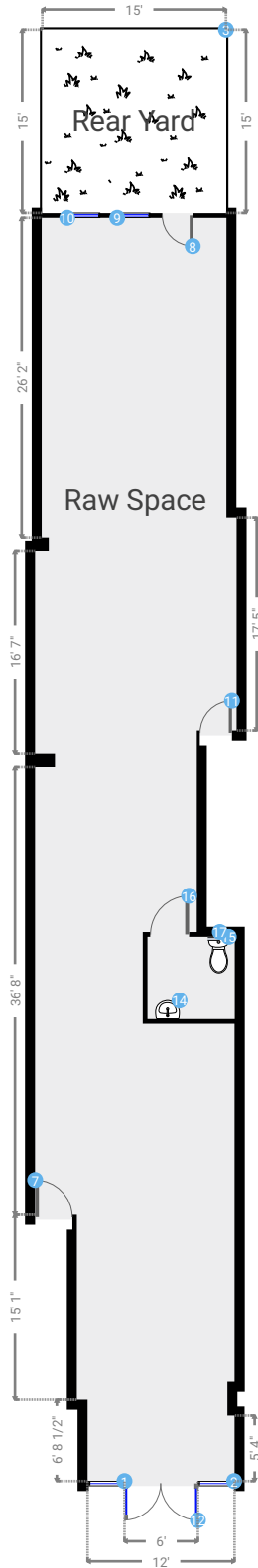
3062 Richmond Street, 19134 Philadelphia, PA, USA

TOTAL AREA: 1511.90 sq ft • LIVING AREA: 1726.90 sq ft • FLOORS: 1 • ROOMS: 1

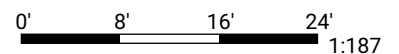


▼ 1st Floor

TOTAL AREA: 1511.90 sq ft • LIVING AREA: 1726.90 sq ft • ROOMS: 1



THIS FLOORPLAN IS PROVIDED AS A VISUAL AID BY PANGEA UNITED GROUP WITHOUT WARRANTY OF ANY KIND. PANGEA UNITED GROUP AND SENSOPIA DISCLAIMS ANY WARRANTY INCLUDING, WITHOUT LIMITATION, SATISFACTORY QUALITY OR ACCURACY OF DIMENSIONS. LAYOUT IS INTENDED TO SERVE AS VISUAL REFERENCE.



3062 Richmond 1F [Pangea Layout]

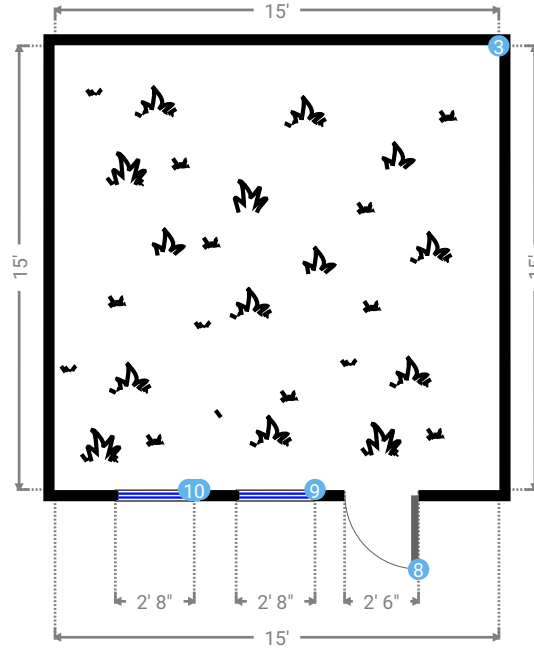
3062 Richmond Street, 19134 Philadelphia, PA, USA

TOTAL AREA: 1511.90 sq ft • LIVING AREA: 1726.90 sq ft • FLOORS: 1 • ROOMS: 1



▼ Rear Yard 1st Floor

WIDTH: 15' • LENGTH: 15'
AREA: 225.05 sq ft • PERIMETER: 60'



▼ Rear Yard/1st Floor

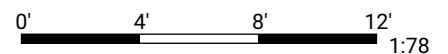
3 GRASS

Dimensions

15' x 15' x 0 (Width x Depth x Height)



THIS FLOORPLAN IS PROVIDED AS A VISUAL AID BY PANGEA UNITED GROUP WITHOUT WARRANTY OF ANY KIND. PANGEA UNITED GROUP AND SENSOPIA DISCLAIMS ANY WARRANTY INCLUDING, WITHOUT LIMITATION, SATISFACTORY QUALITY OR ACCURACY OF DIMENSIONS. LAYOUT IS INTENDED TO SERVE AS VISUAL REFERENCE.



3062 Richmond 1F [Pangea Layout]

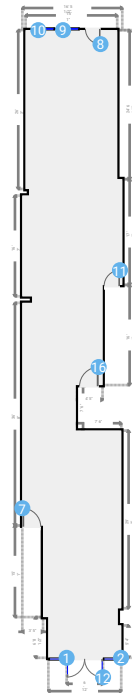
3062 Richmond Street, 19134 Philadelphia, PA, USA

TOTAL AREA: 1511.90 sq ft • LIVING AREA: 1726.90 sq ft • FLOORS: 1 • ROOMS: 1



▼ Raw Space 1st Floor

WIDTH: 16' 5 1/2" • LENGTH: 103' 4 1/2"
AREA: 1464.46 sq ft • PERIMETER: 260' 2 3/4"



▼ Raw Space/1st Floor

1 FIXED WINDOW

Dimensions
2' 11" x 7' (Width x Height)

Distance to Floor
1'



2 FIXED WINDOW

Dimensions
2' 11" x 7' (Width x Height)

Distance to Floor
1'



7 HINGED DOOR

Dimensions
3' 1/2" x 6' (Width x Height)



8 HINGED DOOR

Dimensions
2' 6" x 6' 8" (Width x Height)



THIS FLOORPLAN IS PROVIDED AS A VISUAL AID BY PANGEA UNITED GROUP WITHOUT WARRANTY OF ANY KIND. PANGEA UNITED GROUP AND SENSOPIA DISCLAIMS ANY WARRANTY INCLUDING, WITHOUT LIMITATION, SATISFACTORY QUALITY OR ACCURACY OF DIMENSIONS. LAYOUT IS INTENDED TO SERVE AS VISUAL REFERENCE.

0' 16' 32' 48'
1:380

3062 Richmond 1F [Pangea Layout]

3062 Richmond Street, 19134 Philadelphia, PA, USA

TOTAL AREA: 1511.90 sq ft • LIVING AREA: 1726.90 sq ft • FLOORS: 1 • ROOMS: 1



▼ Raw Space/1st Floor

8 HINGED DOOR

Distance to Floor

1'



9 HUNG WINDOW

Dimensions

2' 8" x 2' (Width x Height)

Distance to Floor

6' 3"



10 HUNG WINDOW

Dimensions

2' 8" x 2' (Width x Height)

Distance to Floor

6' 3"



11 HINGED DOOR

Dimensions

2' 7 1/2" x 6' 8 1/4" (Width x Height)



12 FRENCH DOOR

Dimensions

6' x 6' 8 1/4" (Width x Height)



3062 Richmond 1F [Pangea Layout]

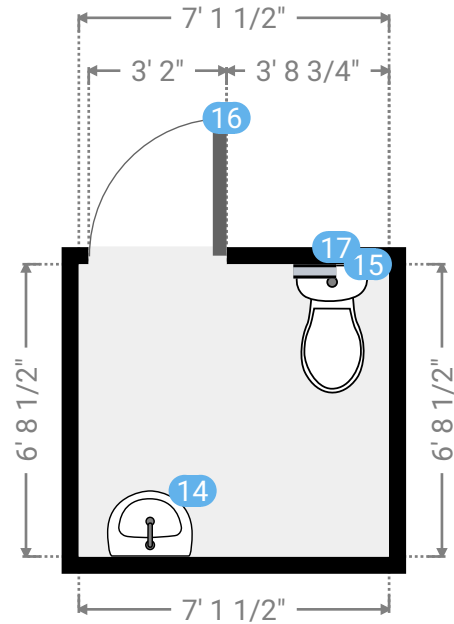
3062 Richmond Street, 19134 Philadelphia, PA, USA

TOTAL AREA: 1511.90 sq ft • LIVING AREA: 1726.90 sq ft • FLOORS: 1 • ROOMS: 1



▼ Restrooms 1st Floor

WIDTH: 7' 1 1/2" • LENGTH: 6' 8 1/2"
AREA: 47.85 sq ft • PERIMETER: 27' 8 1/4"



▼ Restrooms/1st Floor

14 PEDESTAL SINK

Dimensions
1' 11 1/2" x 1' 6" x 3' 2" (Width x Depth x Height)



15 TOILET

Dimensions
1' 7 3/4" x 2' 11 1/2" x 2' 11 3/4" (Width x Depth x Height)



16 HINGED DOOR

Dimensions
3' 2" x 6' 8 1/4" (Width x Height)



17 EXHAUST FAN

Dimensions
11 3/4" x 11 3/4" (Width x Height)



THIS FLOORPLAN IS PROVIDED AS A VISUAL AID BY PANGAEA UNITED GROUP WITHOUT WARRANTY OF ANY KIND. PANGAEA UNITED GROUP AND SENSOPIA DISCLAIMS ANY WARRANTY INCLUDING, WITHOUT LIMITATION, SATISFACTORY QUALITY OR ACCURACY OF DIMENSIONS. LAYOUT IS INTENDED TO SERVE AS VISUAL REFERENCE.

