

# CARLSBAD OAKS COMMERCE CENTER

5931-5933 Sea Lion Place,  
Carlsbad, CA 92010

CIP REAL ESTATE



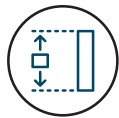
**FOR LEASE**

**INDUSTRIAL BUSINESS PARK**

±1,274 - ±1,919 SF AVAILABLE

 CUSHMAN &  
WAKEFIELD

# PROPERTY HIGHLIGHTS



Clear Height: 18'



Flex/Industrial Suites



Gas Potentially Available



Exterior Improvements Underway



Grade-Level Loading



Central North County Location



Sprinkered Suites



Close proximity to Palomar-McClellan Airport, Shopping, Restaurants, and Housing



Landscaping Improvements Underway

# AVAILABILITIES

INDUSTRIAL				
UNIT	SIZE	DESCRIPTION	LEASE RATE	AVAILABILITY
<b>5931 Sea Lion Place</b> // Suite 102	1,746 SF	Warehouse, Restroom, Private Office, Reception Area, and Roll-Up Door	\$1.75/SF + *Est NNN	Now
<b>5931 Sea Lion Place</b> // Suite 109	1,919 SF	Warehouse, Restroom, Private Offices, Open Office, Reception Area, and Roll-Up Door	\$1.75/SF + *Est NNN	Now
<b>5931 Sea Lion Place</b> // Suite 112	1,614 SF	Warehouse, Restroom, Private Office, Reception Area, and Roll-Up Door	\$1.75/SF + *Est NNN	Now
<b>5933 Sea Lion Place</b> // Suite 100	1,856 SF	Warehouse, Restroom, Private Offices, Reception Area, and Roll-Up Door	\$1.75/SF + *Est NNN	May 1, 2026
<b>5933 Sea Lion Place</b> // Suite 108	1,274 SF	Warehouse, Restroom, Private Offices, Reception Area, and Roll-Up Door	\$1.75/SF + *Est NNN	Now
<b>5933 Sea Lion Place</b> // Suite 112	1,735 SF	Warehouse, Restroom, Private Office, Open Office, Reception Area, and Roll-Up Door	\$1.75/SF + *Est NNN	May 1, 2026

\*Est. NNN: \$0.55/SF

 Available



# FLOOR PLAN

## 5931 SEA LION PLACE

**102**

SUITE AVAILABLE

**1,746**

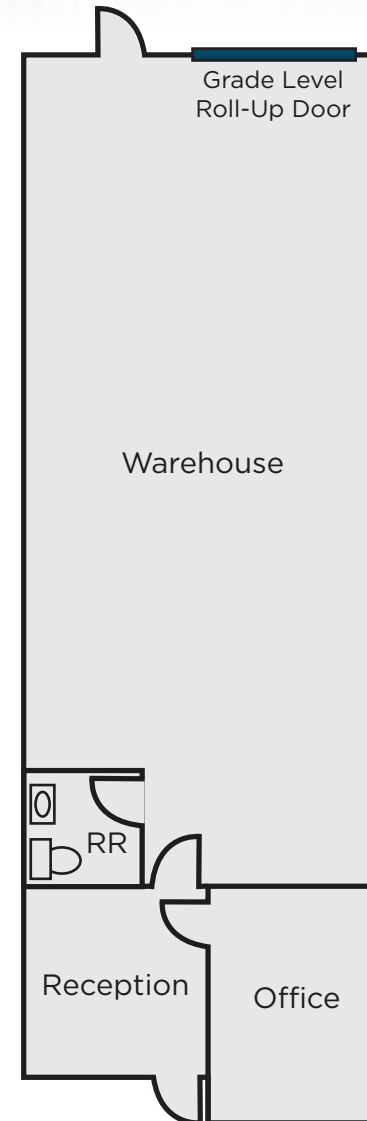
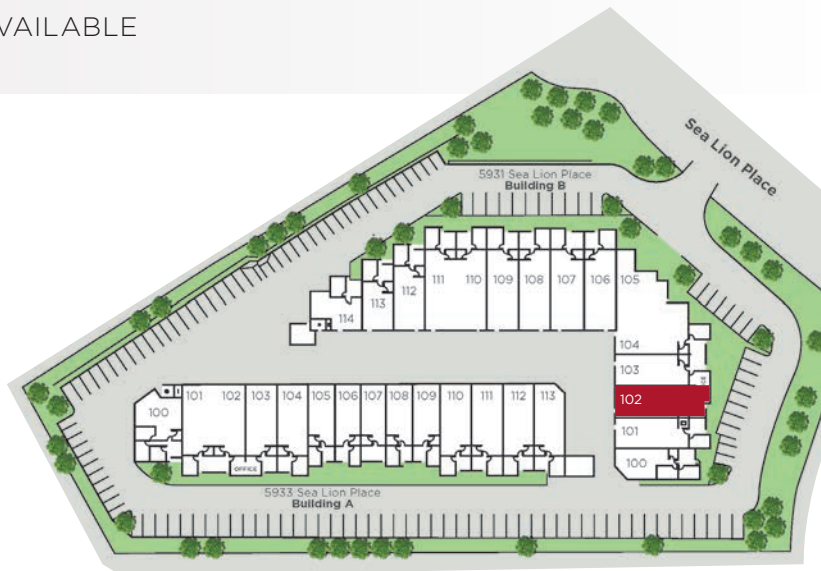
TOTAL SQUARE FEET

**\$1.75/ SF NNN**

LEASE RATE + \*Est NNN: \$0.55/SF

**NOW**

DATE AVAILABLE



# FLOOR PLAN

## 5931 SEA LION PLACE

**109**

SUITE AVAILABLE

**1,919**

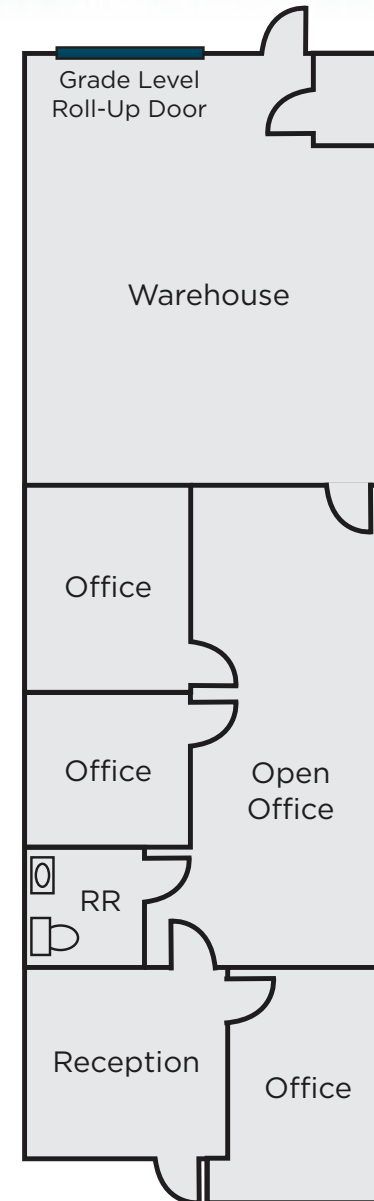
TOTAL SQUARE FEET

**\$1.75/ SF NNN**

LEASE RATE + \*Est NNN: \$0.55/SF

**NOW**

DATE AVAILABLE



# FLOOR PLAN

## 5931 SEA LION PLACE

**112**

SUITE AVAILABLE

**1,614**

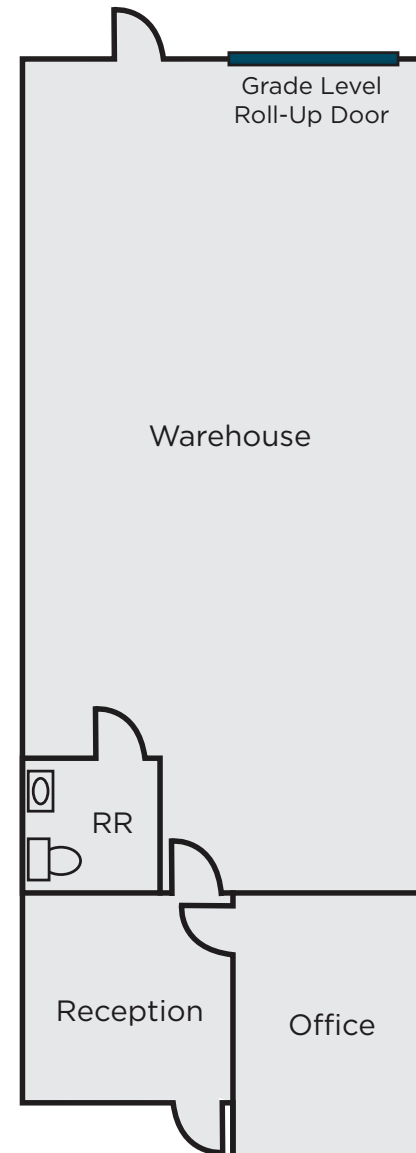
TOTAL SQUARE FEET

**\$1.75/ SF NNN**

LEASE RATE + \*Est NNN: \$0.55/SF

**NOW**

DATE AVAILABLE



# FLOOR PLAN

## 5933 SEA LION PLACE

**100**

SUITE AVAILABLE

**1,856**

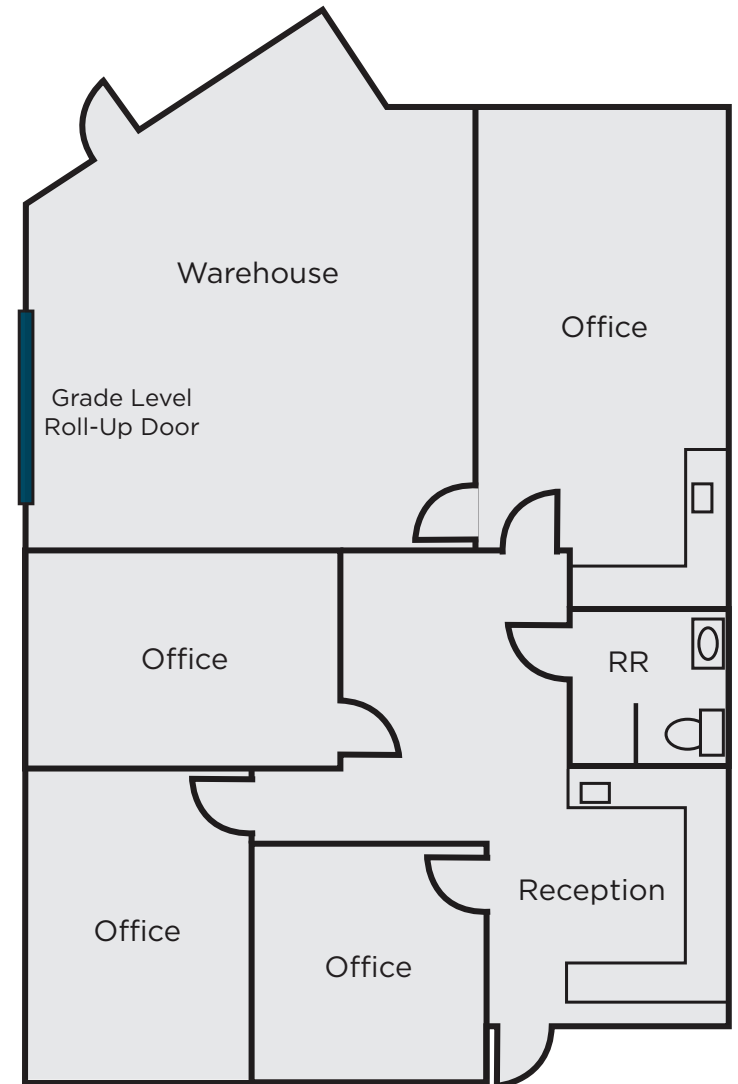
TOTAL SQUARE FEET

**\$1.75/ SF NNN**

LEASE RATE + \*Est NNN: \$0.55/SF

**MAY 1, 2026**

DATE AVAILABLE



# FLOOR PLAN

## 5933 SEA LION PLACE

**108**

SUITE AVAILABLE

**1,274**

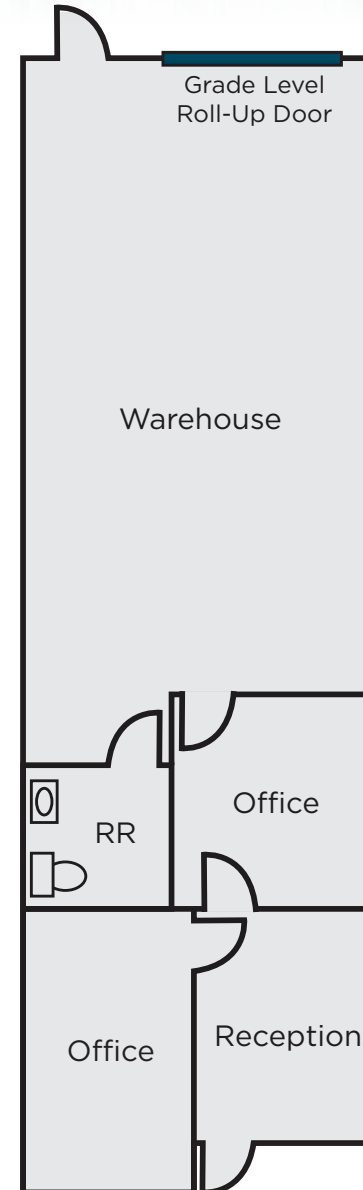
TOTAL SQUARE FEET

**\$1.75/ SF NNN**

LEASE RATE + \*Est NNN: \$0.55/SF

**NOW**

DATE AVAILABLE



# FLOOR PLAN

## 5933 SEA LION PLACE

**112**

SUITE AVAILABLE

**1,735**

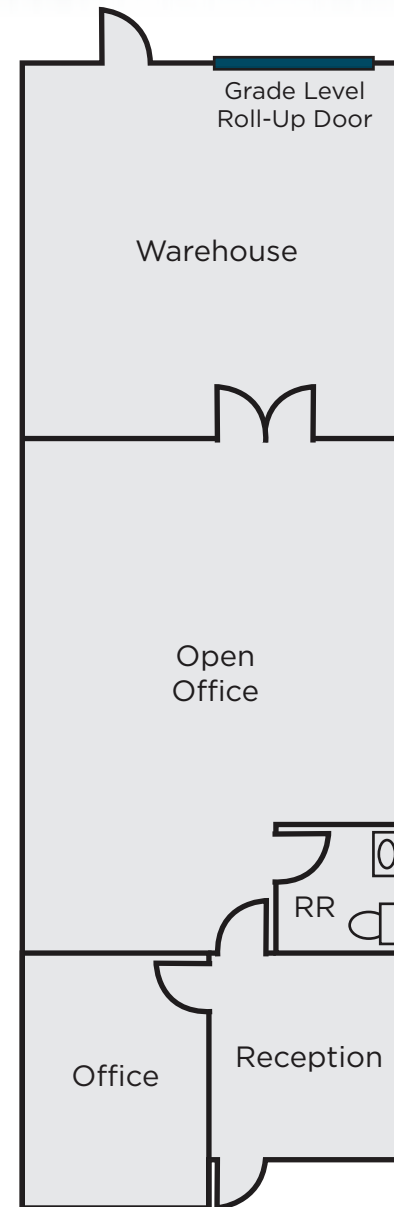
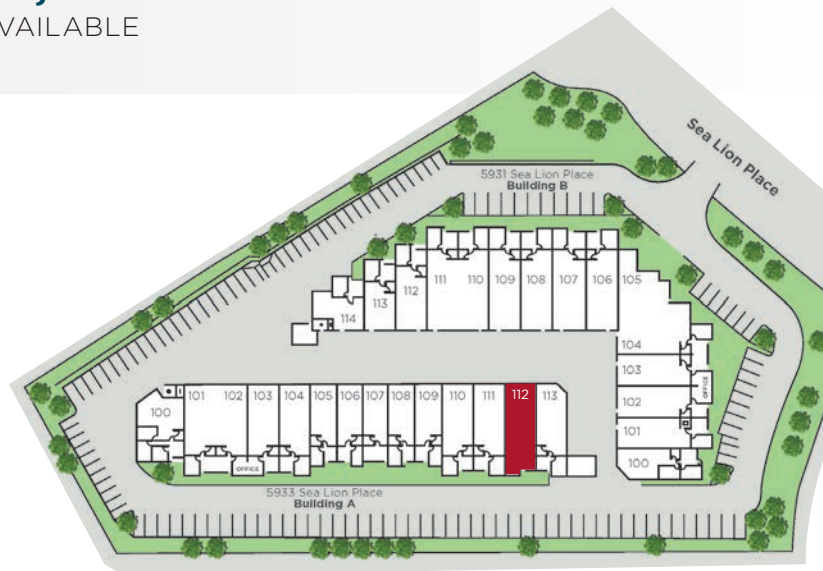
TOTAL SQUARE FEET

**\$1.75/ SF NNN**

LEASE RATE + \*Est NNN: \$0.55/SF

**MAY 1, 2026**

DATE AVAILABLE



# PHOTOS



# LOCATION



# CARLSBAD OAKS COMMERCE CENTER

FOR LEASE

CIP REAL ESTATE

## CONTACT BROKERS:

**CONOR BOYLE**

760.458.5739  
conor.boyle@cushwake.com  
Lic. No.01813305

**TYLER STEMLEY**

760.908.4270  
tyler.stemley@cushwake.com  
Lic. No.02003867

**CARSON ODABASHIAN**

760.431.3836  
carson.odabashian@cushwake.com  
Lic. No.02207230

©2026 Cushman & Wakefield. All rights reserved. The information contained in this communication is strictly confidential. This information has been obtained from sources believed to be reliable but has not been verified. NO WARRANTY OR REPRESENTATION, EXPRESS OR IMPLIED, IS MADE AS TO THE CONDITION OF THE PROPERTY (OR PROPERTIES) REFERENCED HEREIN OR AS TO THE ACCURACY OR COMPLETENESS OF THE INFORMATION CONTAINED HEREIN, AND SAME IS SUBMITTED SUBJECT TO ERRORS, OMISSIONS, CHANGE OF PRICE, RENTAL OR OTHER CONDITIONS, WITHDRAWAL WITHOUT NOTICE, AND TO ANY SPECIAL LISTING CONDITIONS IMPOSED BY THE PROPERTY OWNER(S). ANY PROJECTIONS, OPINIONS OR ESTIMATES ARE SUBJECT TO UNCERTAINTY AND DO NOT SIGNIFY CURRENT OR FUTURE PROPERTY PERFORMANCE.

