



**FOR LEASE**  
**LEASE RATE: \$32-37/SF**



**10920 MOSS PARK RD.  
 ORLANDO, FL 32832**

**MEDICAL VILLAGE AT  
 LAKE NONA**

For More Information:

**Bobby Bridges**

407 616 1025

bobby@v3capgroup.com



IN PARTNERSHIP WITH:



[www.v3commercialadvisors.com](http://www.v3commercialadvisors.com)

The information contained herein has been given to us by the owner of the property or other sources we deem reliable. We have no reason to doubt its accuracy, but we do not guarantee it. All information should be verified prior to purchase or lease.

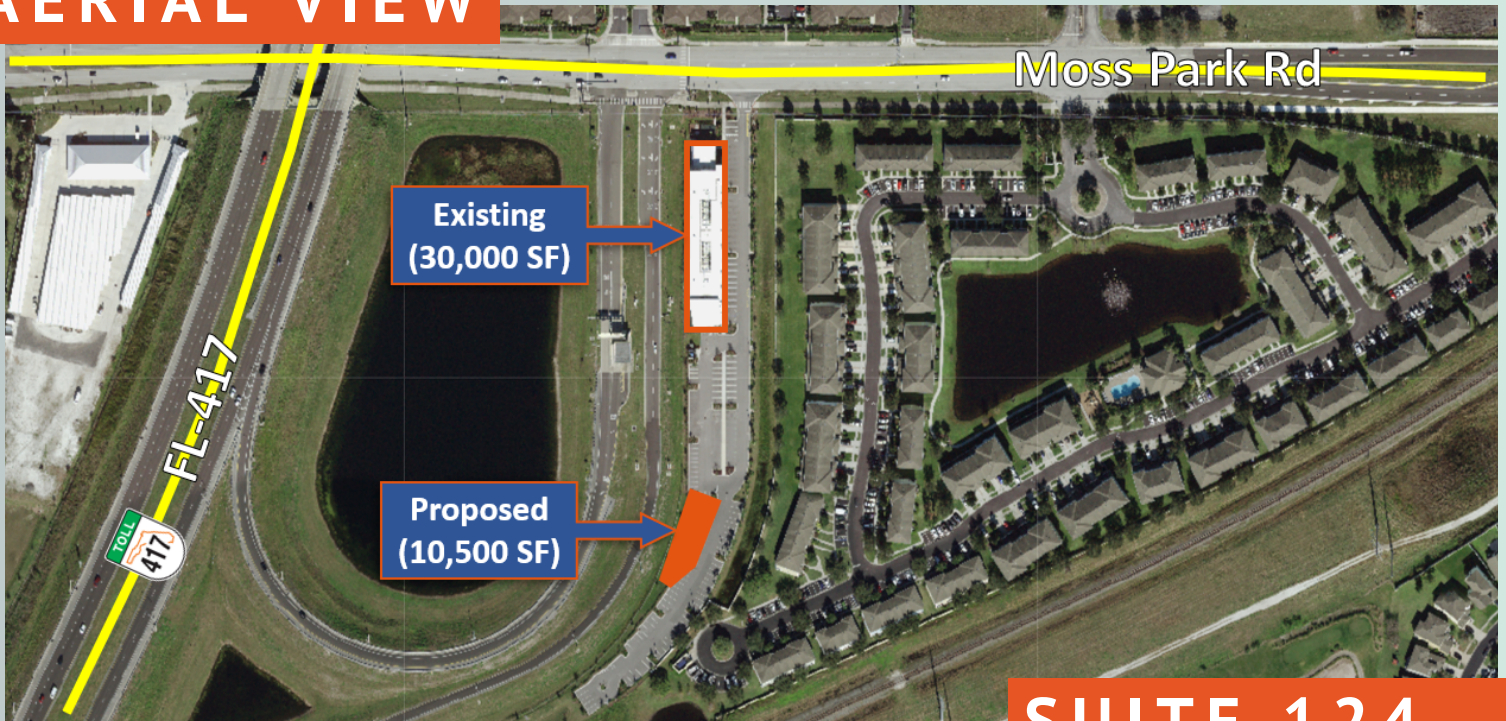
**PROPERTY HIGHLIGHTS**

- Two-building medical office complex; one existing and one proposed
- Prominent location with easy access and visibility from FL-417
- Building signage available
- Ample parking with a 6.0/1,000 SF parking ratio
- 1,500 SF move-in ready medical space with heavy foot traffic from existing medical tenants
- New construction with high-end finishes

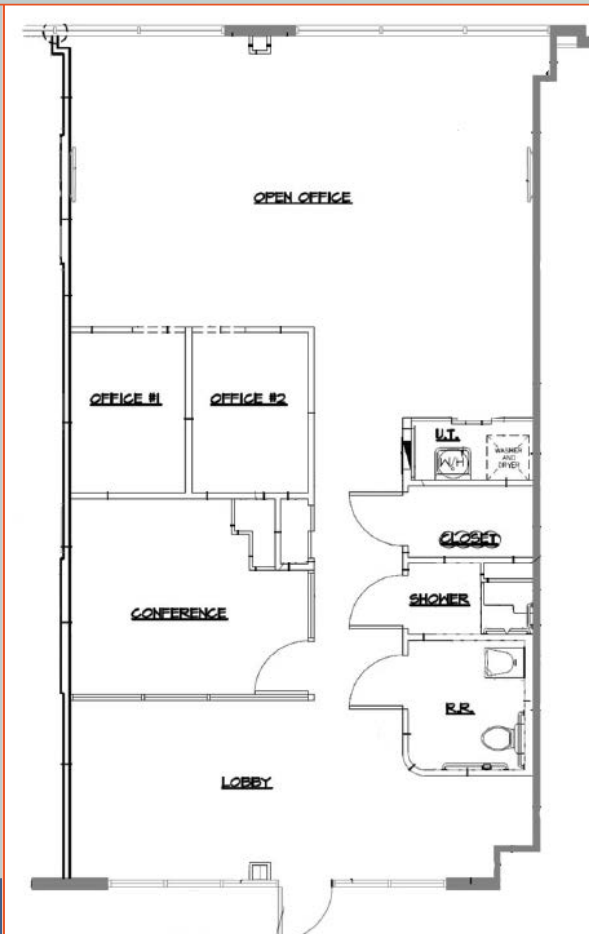
**DEMOGRAPHICS**

	1 MILE	3 MILE	5 MILE
<b>Population</b>	7,419	31,202	54,439
<b>Households</b>	2,609	10,617	18,884
<b>Median HH Income</b>	\$85,130	\$92,226	\$83,627

# AERIAL VIEW



## SUITE 124



- LEASE RATE: \$32-34/SF
- SIZE: 1,500 SF

[www.v3commercialadvisors.com](http://www.v3commercialadvisors.com)

The information contained herein has been given to us by the owner of the property or other sources we deem reliable. We have no reason to doubt its accuracy, but we do not guarantee it. All information should be verified prior to purchase or lease.

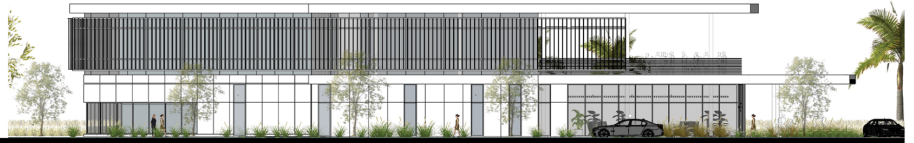
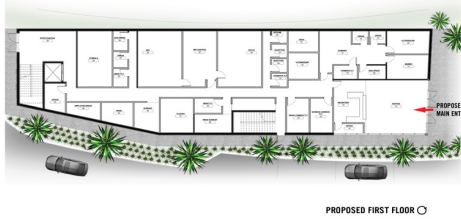
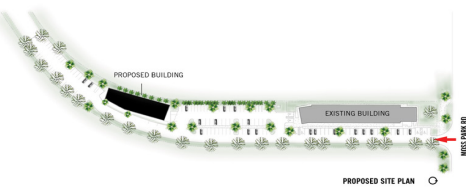
**Bobby Bridges**  
407 616 1025  
[bobby@v3capgroup.com](mailto:bobby@v3capgroup.com)

# RENDERING



## PROPOSED BUILDING

- **LEASE RATE:** \$34-37/SF
- **TOTAL SIZE:** 10,500 SF
- Attractive architectural design
- Class A interior finishes
- Building signage available with visibility from FL-417



[www.v3commercialadvisors.com](http://www.v3commercialadvisors.com)

The information contained herein has been given to us by the owner of the property or other sources we deem reliable. We have no reason to doubt its accuracy, but we do not guarantee it. All information should be verified prior to purchase or lease.

**Bobby Bridges**  
407 616 1025  
[bobby@v3capgroup.com](mailto:bobby@v3capgroup.com)