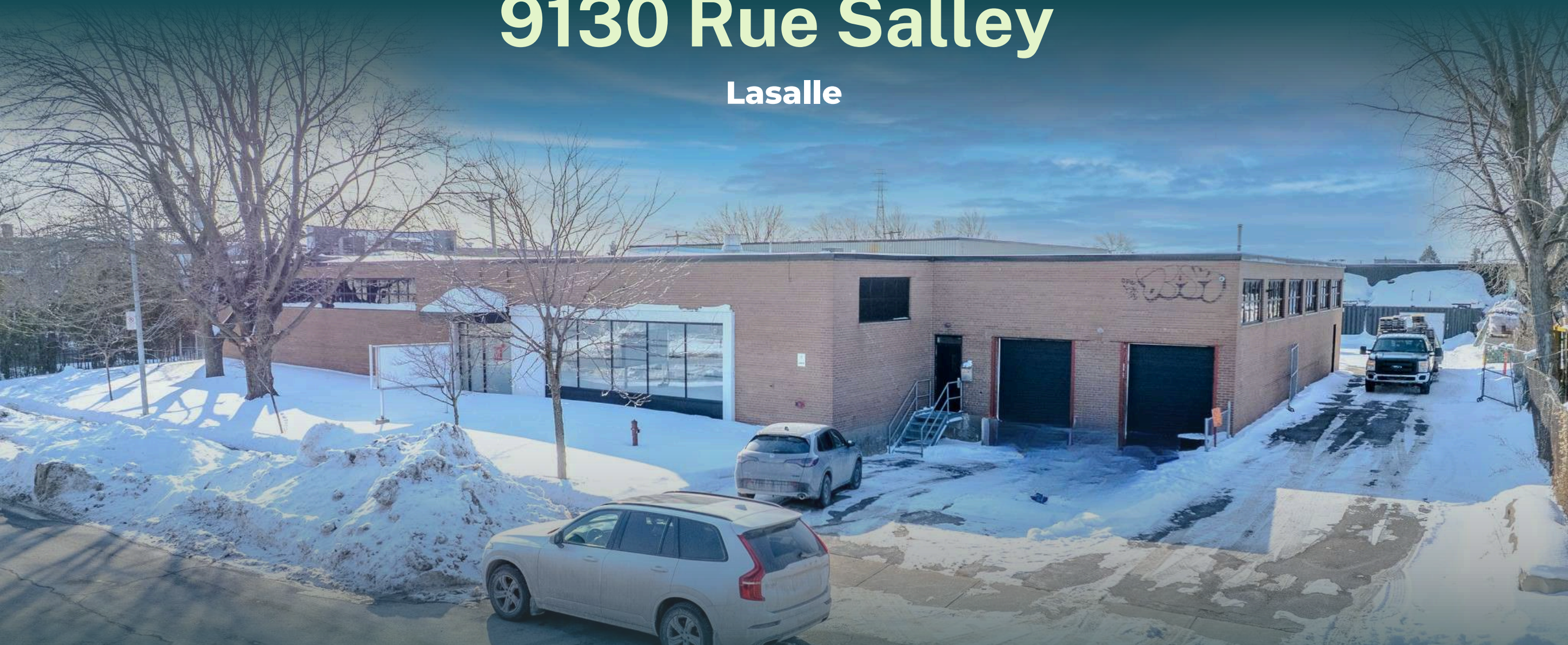




# 9130 Rue Salley

Lasalle



**Industrial Space with Outdoor Storage for Lease**

**± 13,290 SF**

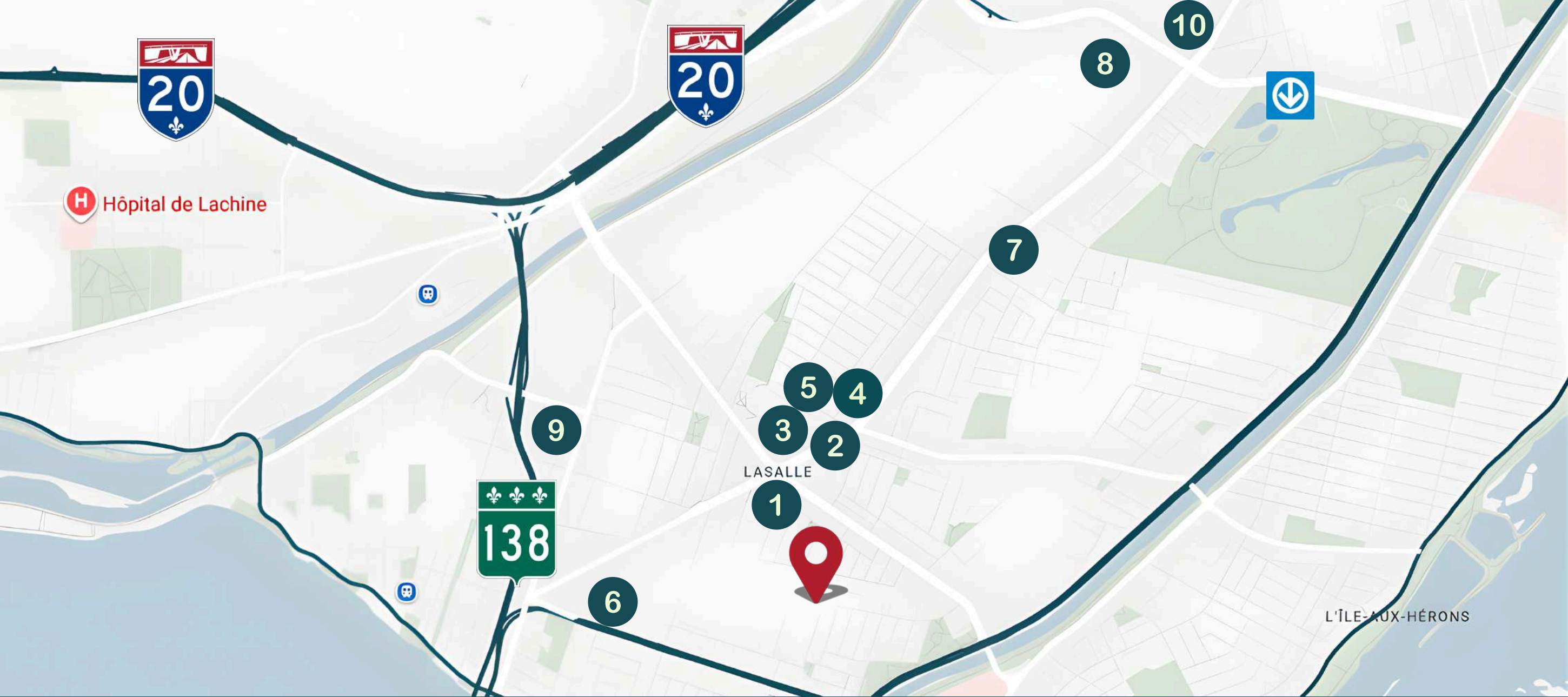


Total Area	± 13,290 SF
Warehouse	± 13,090 SF
Office	± 200 SF
Outdoor Storage	± 5,000 SF
Clear Height	18'
Drive-in Door	1
Loading Docks	2
Gib Crane	1,000 lbs
Sprinklers	Yes
Electrical Entry	250A / 600V
Lighting	LED

Located in the established industrial sector of LaSalle, offering strong proximity to Montreal's core industrial hubs.

Strategically located near Highways 25, 20, 13, and 15, providing efficient connectivity across the Greater Montreal region.

Excellent proximity to the Mercier Bridge and key logistics corridors, facilitating smooth east-west and southbound distribution.



1

Metro

2

Starbucks

3

Pharmaprix

4

McDonalds

5

Maxi

6

Double Pizza

7

Rona

8

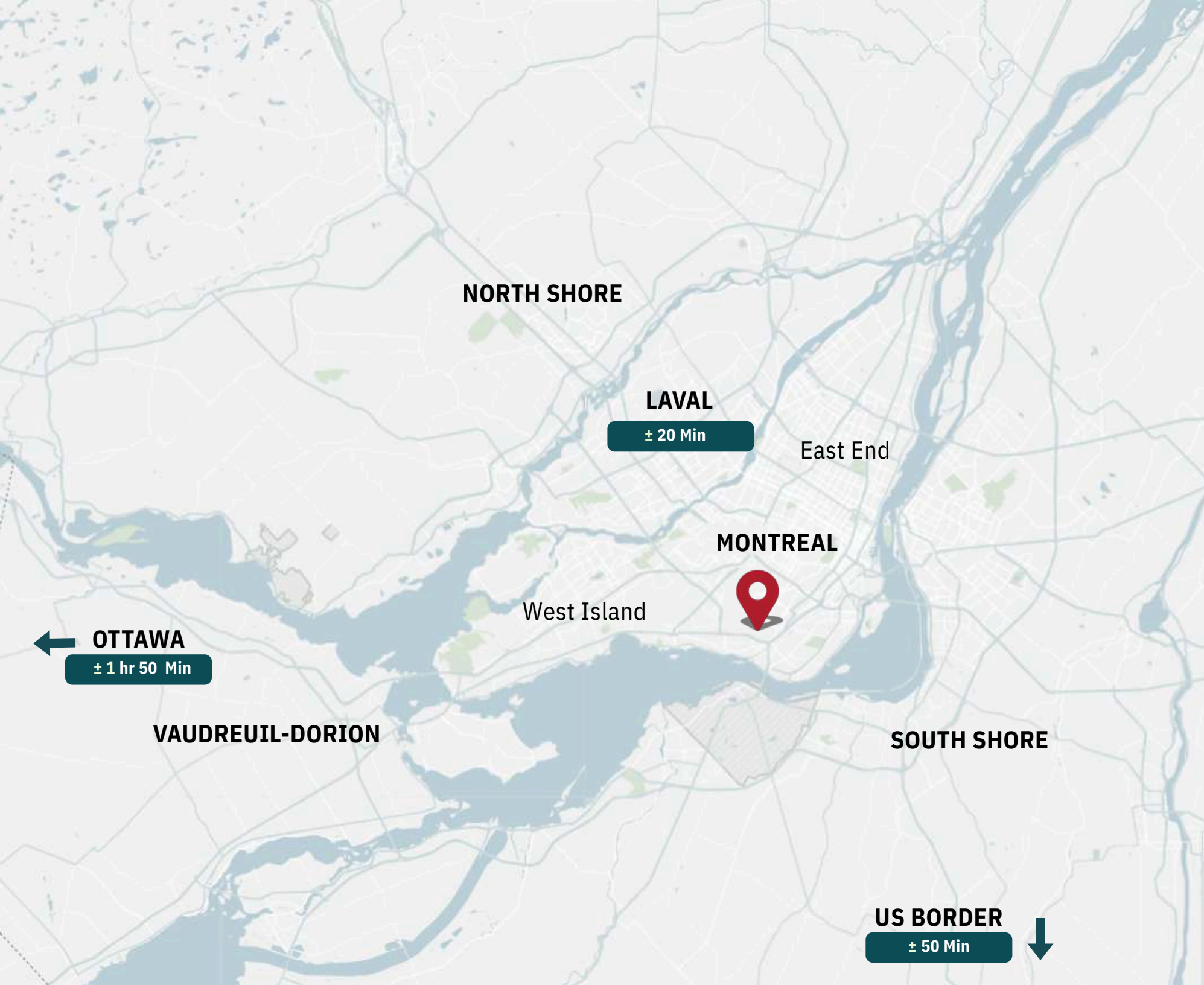
Carrefour Angrignon

9

Sami Fruits

10

Walmart



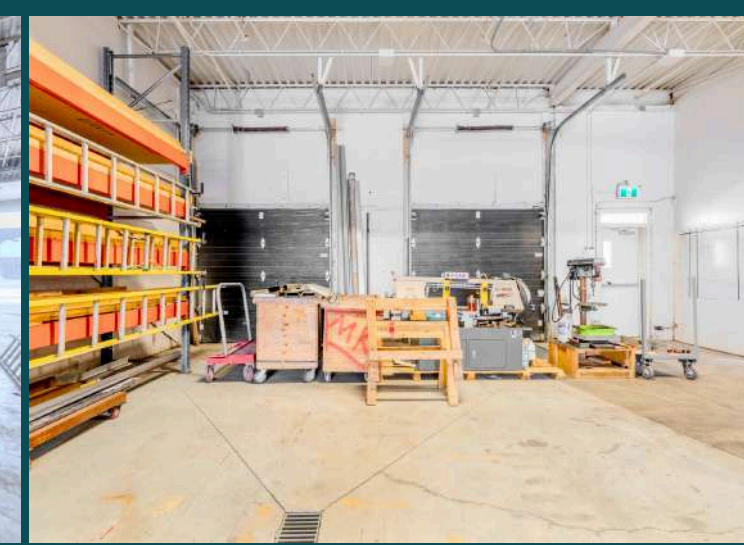
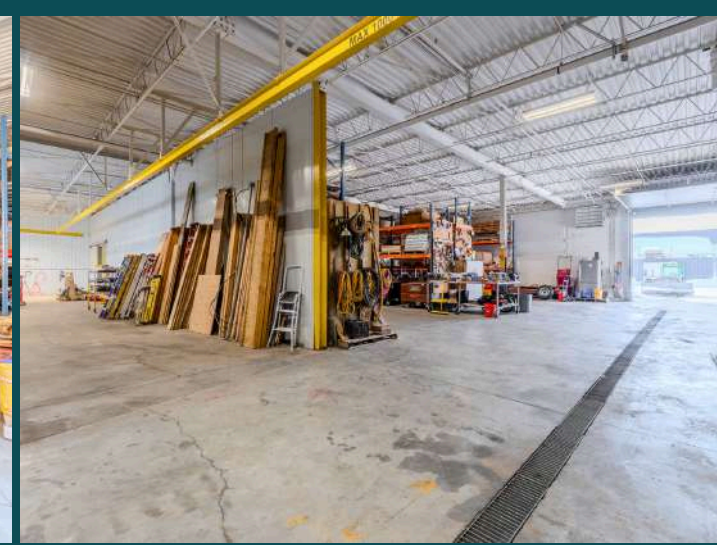
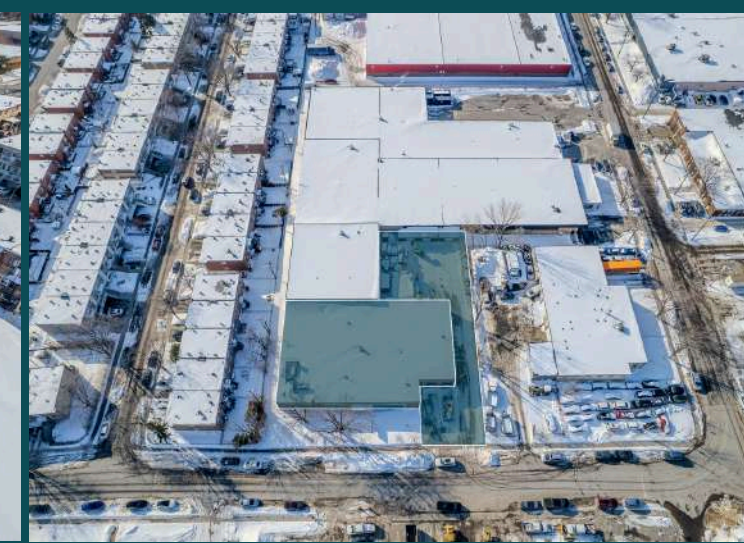
## Driving Times

Carrefour Angrignon	± 8 Min
Dorval CN Intermodal Terminal	± 18 Min
Montréal-Trudeau International Airport	± 20 Min
Port of Montréal	± 20 Min



## Bus Times

# 350	Every ± 10-20 Min
# 110	Every ± 10-15 Min





Real Estate Agency  
4480 Chemin de la Côte-de-Liesse, suite  
290, Mont-Royal (Montréal), QC, H4N 2R1

514.736.0511

\* Real estate broker acting within the business corporation Dimitri Mouhteros inc.

\*\* Real estate broker acting within the business corporation Germando Mazzotta inc.

DISCLAIMER: Information provided is based on sources considered reliable, without a guarantee of accuracy. No responsibility and/or warranty is assumed by the broker. This document is intended solely for informational purposes, and is made subject to errors, modifications, and omissions. The purchaser/lessee is encouraged to perform proper due diligence prior to an acquisition or lease agreement. This is not an offer or promise to sell/lease that could bind the vendor/lessor to the purchaser/lessee, but rather an invitation to submit such offers or promises. Any sale is made without legal warranty.

## CONTACT

### **Dimitri (Jimmy) Mouhteros \***

Partner  
Commercial Real Estate Broker

✉ [jmouhteros@trimontcanada.com](mailto:jmouhteros@trimontcanada.com)

### **Peter Mouhteros**

Partner  
Certified Real Estate Broker, A.E.O

✉ [pmouhteros@trimontcanada.com](mailto:pmouhteros@trimontcanada.com)

### **Germando Mazzotta \*\***

Partner  
Commercial Real Estate Broker

✉ [gmazzotta@trimontcanada.com](mailto:gmazzotta@trimontcanada.com)

### **Owen Paek**

Associate Vice President  
Commercial Real Estate Broker

✉ [opaek@trimontcanada.com](mailto:opaek@trimontcanada.com)

### **Robert Kohos**

Associate  
Commercial Real Estate Broker

✉ [rkohos@trimontcanada.com](mailto:rkohos@trimontcanada.com)

### **Giordano Bucciarelli**

Associate  
Commercial Real Estate Broker

✉ [gbucciarelli@trimontcanada.com](mailto:gbucciarelli@trimontcanada.com)