

# HOWARD COMMONS

6201 W. HOWARD ST., STE. 212  
NILES, ILLINOIS

# FOR LEASE



## 975 SF OFFICE

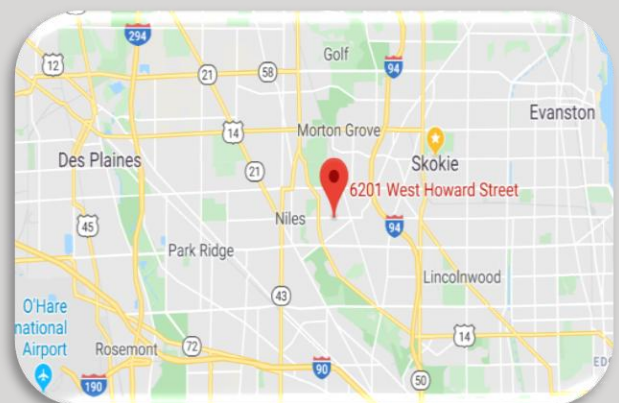
### BUILDING HIGHLIGHTS

- MODERN GLASS 2-STORY OFFICE BUILDING
- 24-HOUR ACCESS
- PASSENGER ELEVATOR
- 100% SPRINKLERED
- PROPERTY MANAGER ON-SITE
- EASY ACCESS TO I-94 VIA TOUHY
- AMPLE OFF-STREET PARKING (DEDICATED SPOTS AVAILABLE)
- IMMEDIATE ACCESS TO PACE BUS & CLOSE PROXIMITY TO TRAIN

### SUITE HIGHLIGHTS

- 3 PRIVATE OFFICES
- OPEN AREA FOR RECEPTION, WORKSTATION, MEETING AREA
- LARGE STORAGE CLOSET
- GAS & ELECTRIC SEPARATELY METERED & CONTROLLED

**CONTACT: HARLEY KAHN**  
**847.676.0030**  
**HARLEY@KAHNCO.NET**



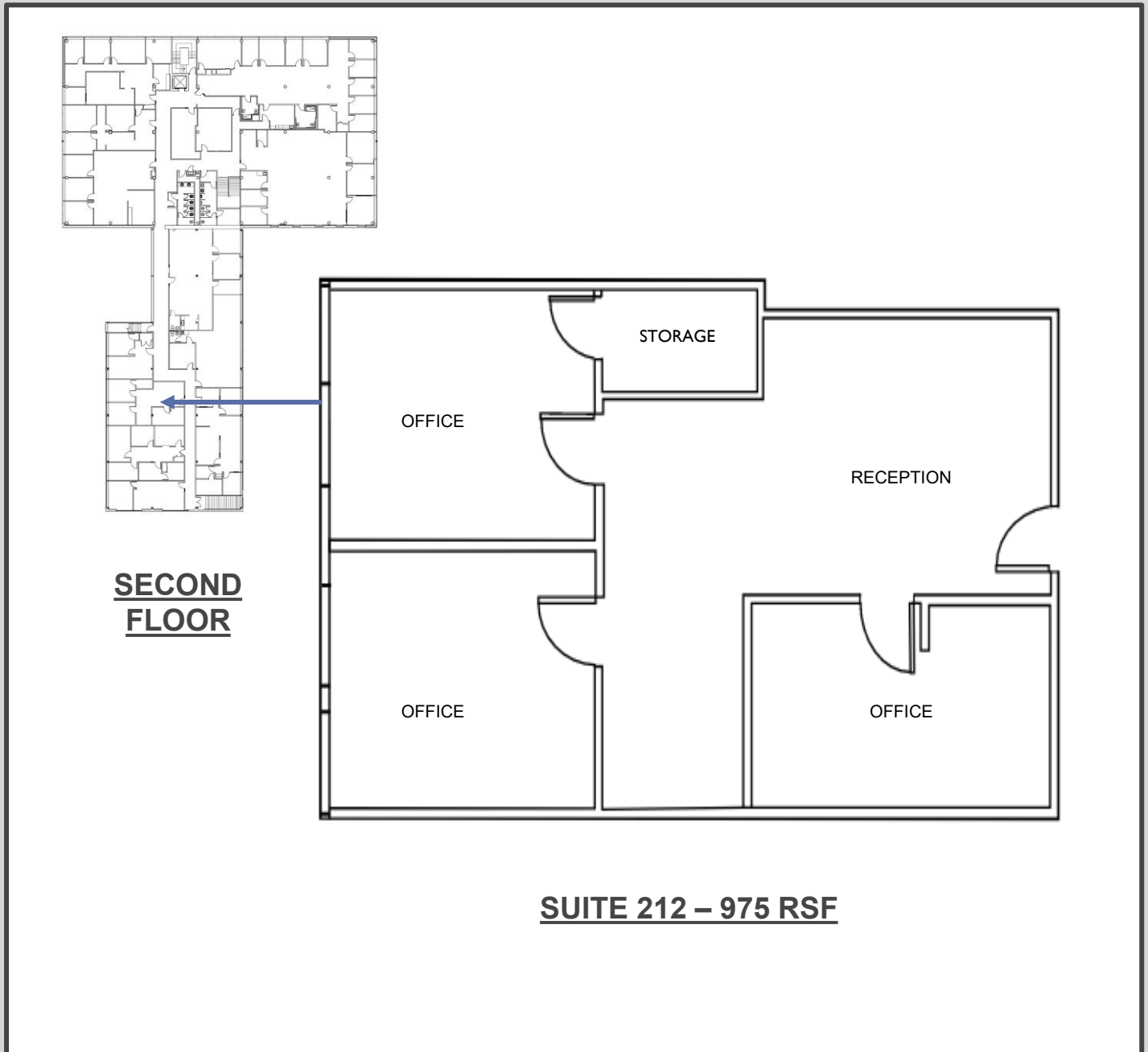
# REA COMMERCIAL REAL ESTATE LLC

Information is provided by other sources and are deemed reliable. Information has not been verified. No representation, warranty or guarantee, expressed or implied or by operation of law is made as to the accuracy, reliability or completeness of this information. This material is submitted subject to errors, omissions, changes prior leasing or sales or withdrawal without notice.

# HOWARD COMMONS

6201 W. HOWARD ST., STE. 212  
NILES, ILLINOIS

# FLOOR PLAN



**PLEASE CONTACT:  
HARLEY KAHN**

**REA COMMERCIAL REAL ESTATE LLC 847.676.0030 HARLEY@KAHNCO.NET**

Information is provided by other sources and are deemed reliable. Information has not been verified. No representation, warranty or guarantee, expressed or implied or by operation of law is made as to the accuracy, reliability or completeness of this information. This material is submitted subject to errors, omissions, changes prior leasing or sales or withdrawal without notice.