

±3,270 SF INDUSTRIAL SUITE AVAILABLE FOR SUBLEASE

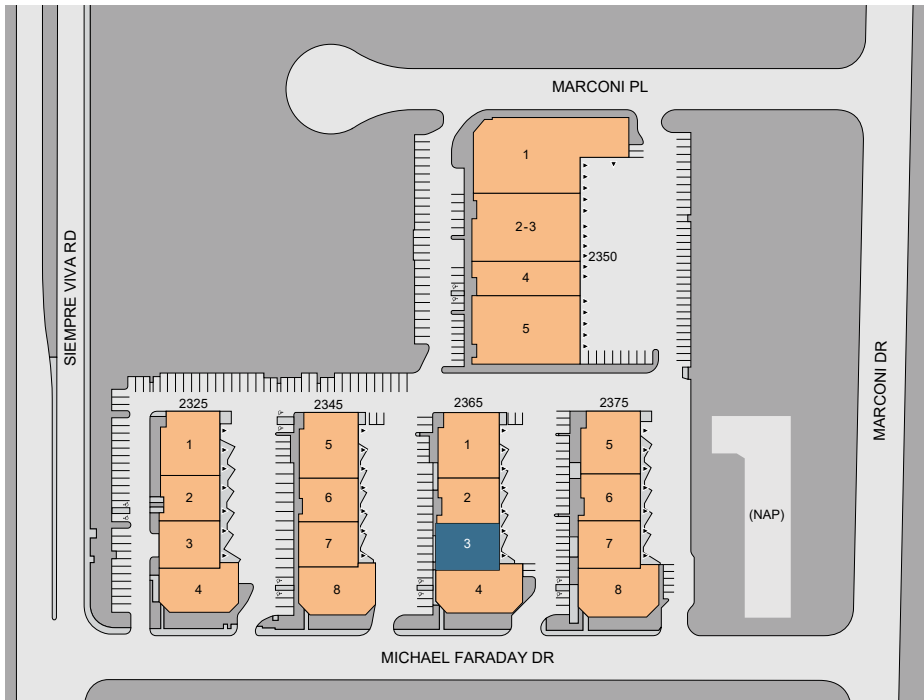
2365 MICHAEL FARADAY DRIVE • SUITE 3, SAN DIEGO, CA 92154



JOSH WEST, SIOR

Senior Vice President, Partner
858.458.3358 | jwest@voitco.com
License #01923375

Voit
REAL ESTATE SERVICES



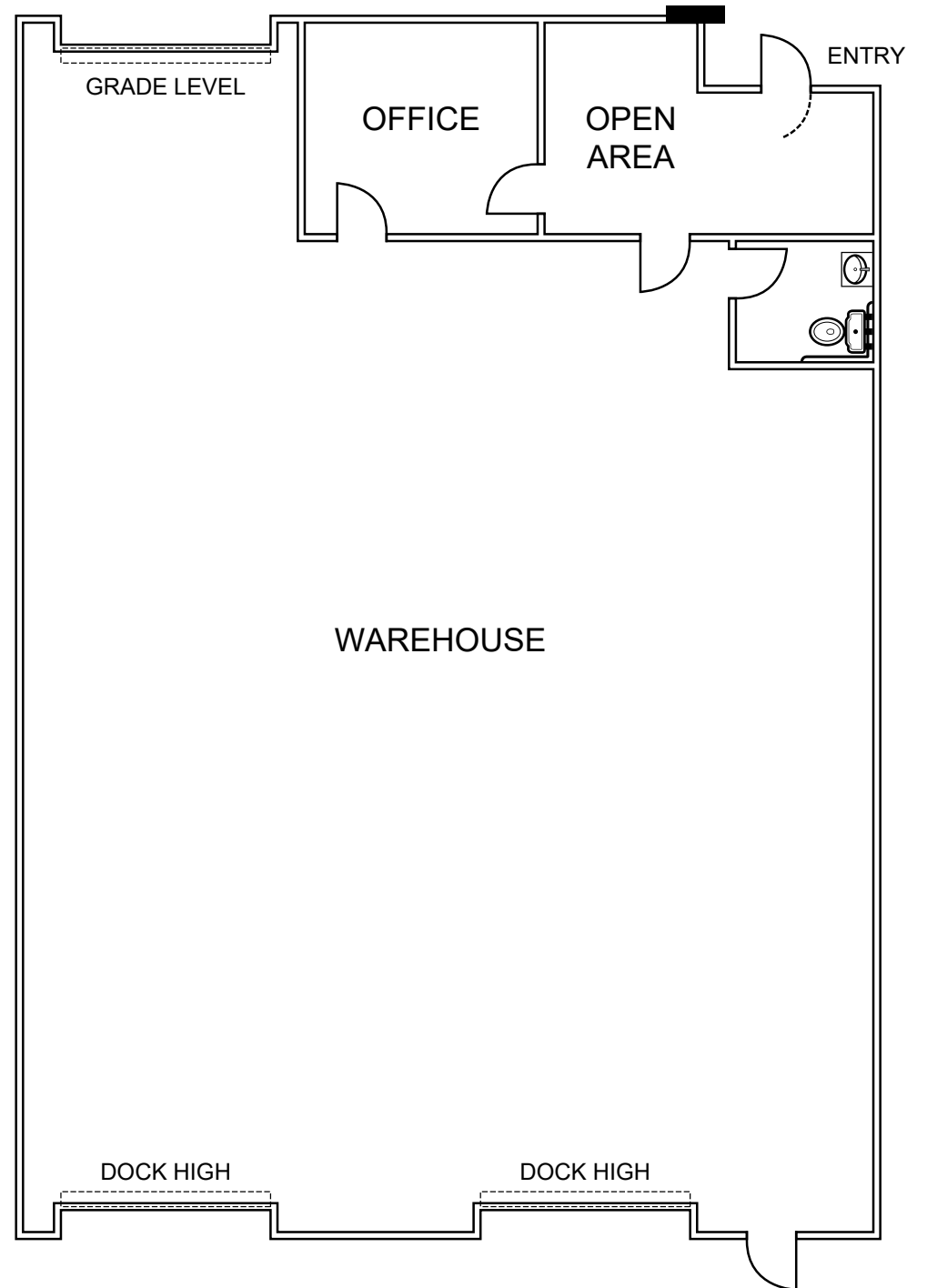
AVAILABILITY OVERVIEW

- » ±3,270 SF Suite Available For Sublease
- » Sublease Expiration: April 30, 2027
- » ±24' Clear Height
- » 2 Docks High Doors & 1 Grade Level Door
- » Wet Sprinklers
- » Available Now
- » Sublease Rate: Withheld



PREMISE OVERVIEW

- » ±3,270 SF
- » ±24' Clear Height
- » Open Area, Office & Warehouse
- » 1 Restroom
- » 2 Docks High Doors
- » 1 Grade Level Door





JOSH WEST, SIOR, Senior Vice President, Partner
 858.458.3358 | License #01923375 | jwest@voitco.com

Voit
 REAL ESTATE SERVICES

4180 La Jolla Village Drive, Suite 100, La Jolla, CA 92037 | 858.453.0505 | 858.408.3976 F | Lic #01991785 | www.voitco.com

Licensed as a Real Estate Salesperson by the DRE. The information contained herein has been obtained from sources we deem reliable. While we have no reason to doubt its accuracy, we do not guarantee it. ©2025 Voit Real Estate Services, Inc. All Rights Reserved.