

For Lease

170-182

Boul. Saint-Luc,
Saint-Jean-sur-Richelieu, Qc

OBERFELD SNOWCAP

For more information, please contact:

Manon Larose*

Managing Director – Client Services

1 438 990-8968

manonl@oberfeldsnowcap.com

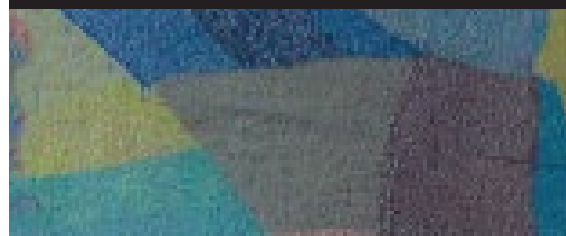


Michelle Marcotte-Blart**

Director – Client Services

1 514 972-6163

michelle@oberfeldsnowcap.com



Overview

Located in the heart of St-Jean-sur-Richelieu, just off of two major arterial routes providing excellent visibility and easy access. This plaza has 30 tenants, including IGA, Dollarama, Tim Hortons, and SAQ.

Area Demographics

Source: Statistics Canada, 2021

Property Details

SQUARE FOOTAGE

- Unit A: 558 SF
- Unit B: 2,721 SF
- Unit C: 2,721 SF
- Unit D: 2,058 SF

ADDRESS

170-182 BD Saint-Luc,
Saint-Jean-sur-Richelieu, QC

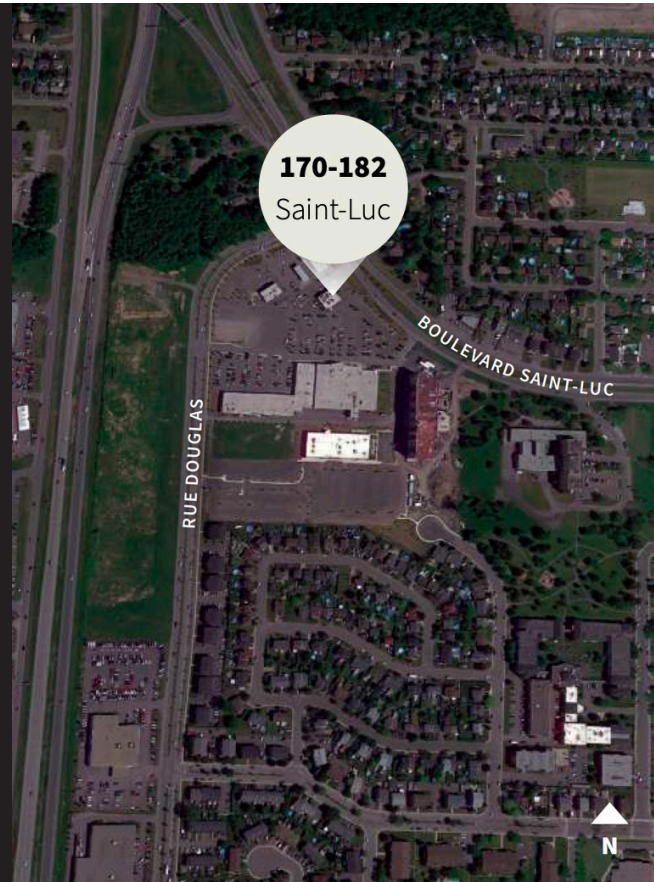
AVAILABILITY

Immediate

BASIC RENT

Contact listing brokers

ADDITIONAL RENT (2022)



	5KM	10KM	15KM
Total Population	70,410	108,971	174,579
Daytime Population	68,250	100,489	150,150
Median Age	43,8	43,3	42,1
Total Households	30,606	45,927	71,187
Average HH Income	\$96,567	\$98,563	\$105,824
Total Expenditure (Per Household)	\$97,492	\$101,014	\$109,863

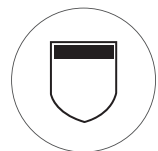
Project Highlights



Parking spaces available



Surrounded by well-known retailers

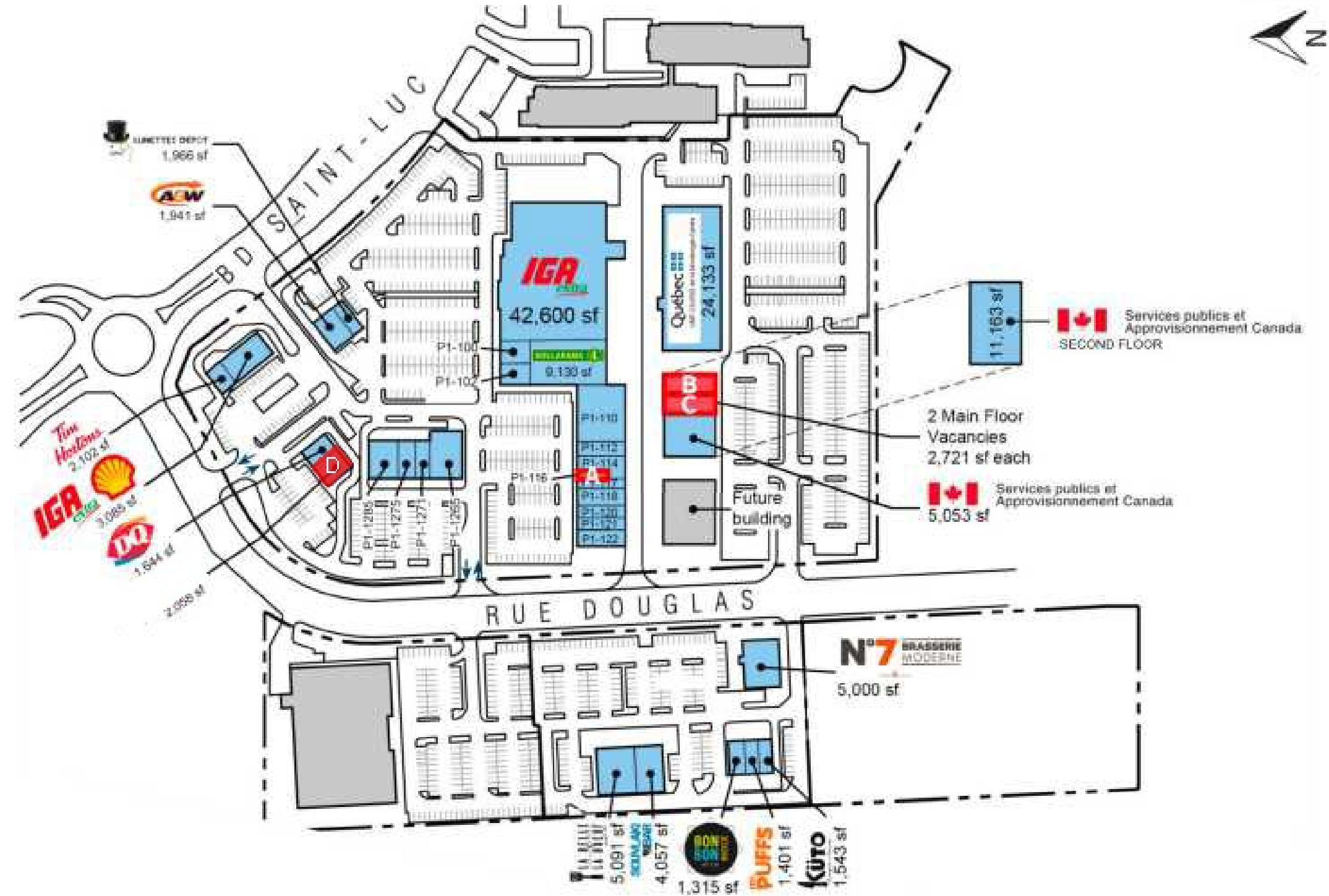


Very high traffic

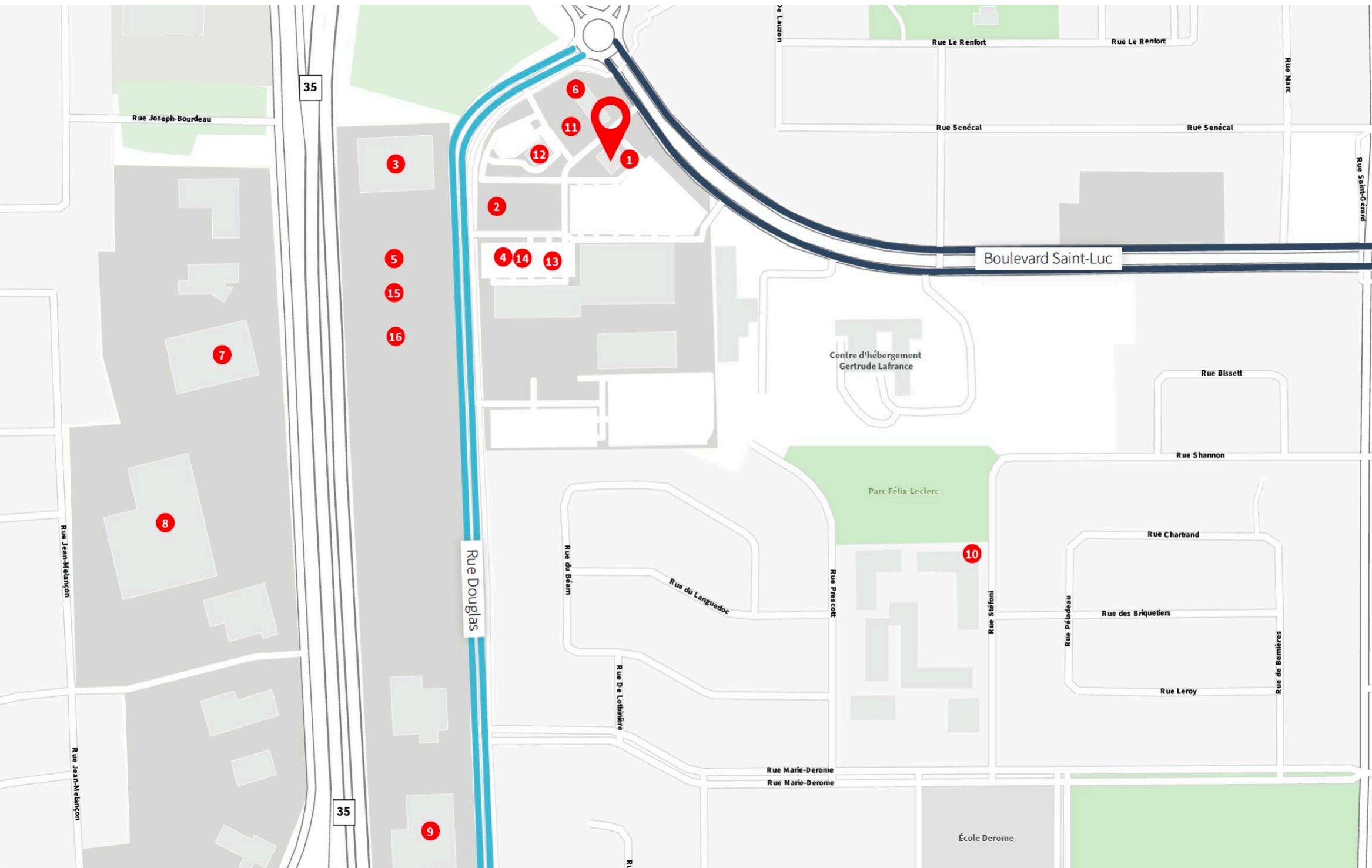
Overview

Available Suites

Unit	SF
Unit A	558 SF
Unit B	2,721 SF
Unit C	2,721 SF
Unit D	2,058 SF



Nearby Retailers



1. A&W Canada
2. Fromagerie Victoria
3. Cinéma Guzzo Méga-Plex Saint-Jean 12
4. SQDC- Saint-Jean-sur-Richelieu
5. La Belle & La Boeuf Burger Bar - Saint-Jean-Sur-Richelieu
6. Tim Hortons
7. Bouvreuil Meubles
8. L'entrepôt RONA Saint-Jean-sur-Richelieu
9. Club Piscine Super Fitness
10. Uniprix Clinique Lyne Germain - Pharmacie affiliée
11. IGA
12. Dairy Queen (Treat)
13. AMIR DOUGLAS
14. Dollarama
15. Mr. Puffs
16. Küto Comptoir à Tartares Saint-Jean-sur-Richelieu

For Lease

170-182

Boul. Saint-Luc,
Saint-Jean-sur-Richelieu, Qc

OBERFELD SNOWCAP

For more information, please contact:

Manon Larose*

Managing Director – Client Services

1 438 990-8968

manonl@oberfeldsnowcap.com



Michelle Marcotte-Blart**

Director – Client Services

1 514 972-6163

michelle@oberfeldsnowcap.com

