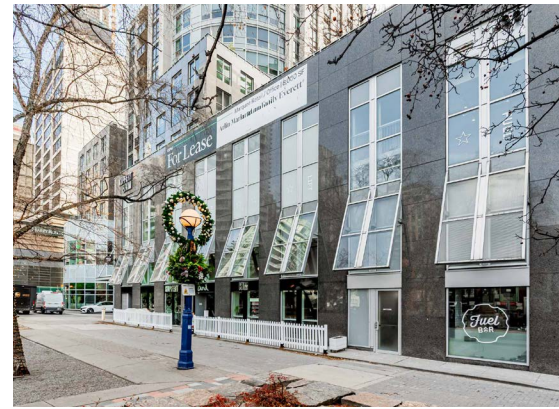
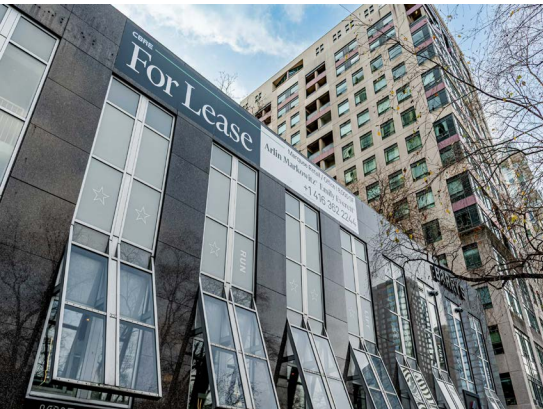
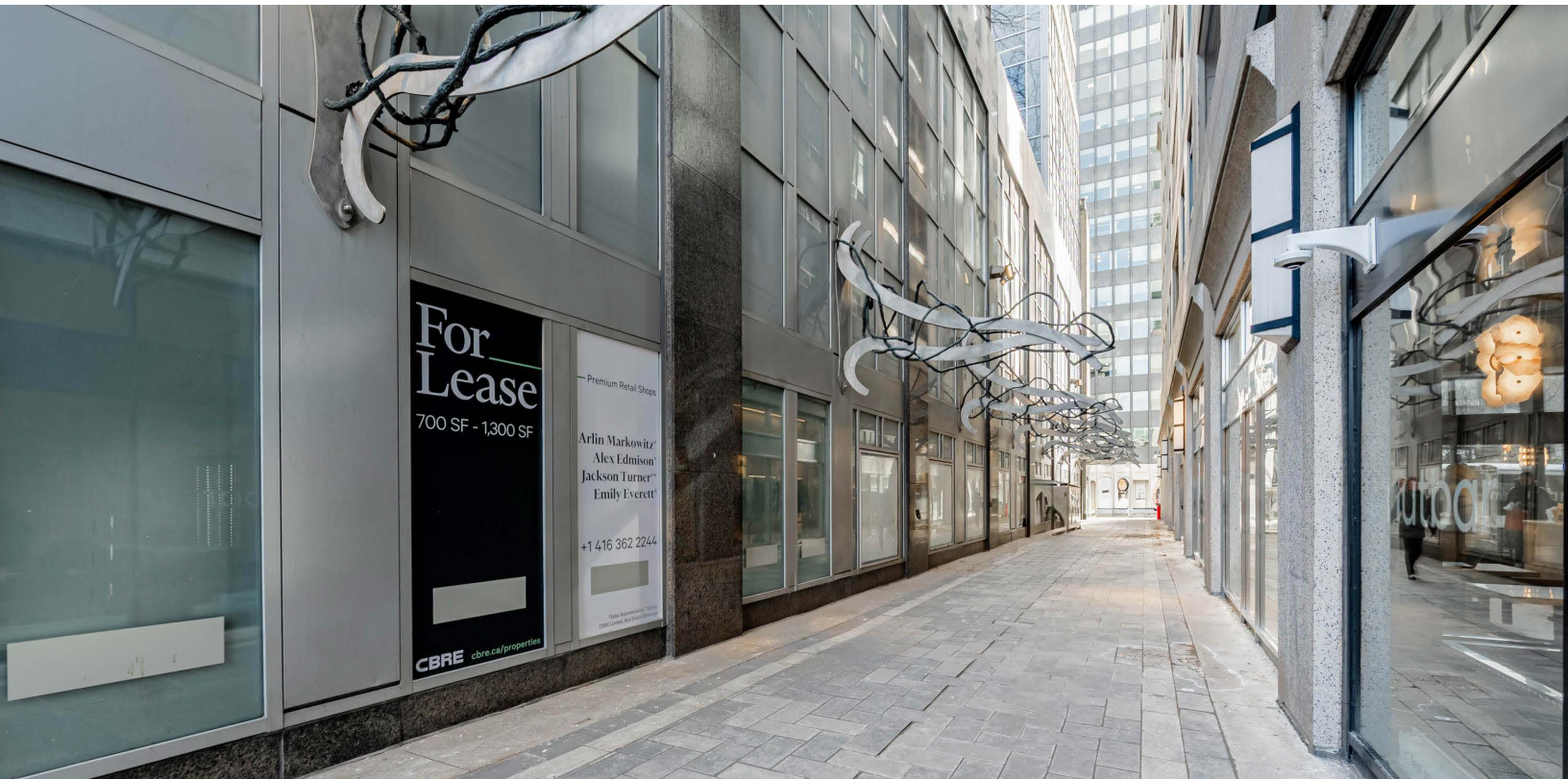


# 1000 *Bloor Street West*

GROUND + SECOND LEVEL OFFICE SPACE FOR LEASE AT AN ICONIC ADDRESS



**CBRE**

# OFFICE SPACE FOR LEASE

**Address:** 100 Bloor Street West, Toronto

**Size:** Ground Level Unit C: 1,350 sq. ft.  
 Ground Level Unit B: 678 sq. ft.  
 Second Level Unit B: 8,137 sq. ft.  
**Total:** 10,165 sq. ft.

*Unit C may be leased separately or together with Unit B*

**Gross Rent :** \$60.00 per sq. ft.

**Available:** Immediately

- Beautiful ground & second floor space for lease at the iconic 100 Bloor Street, home to Burberry, Hermes, Van Cleef & Arpels and Barry’s Bootcamp
- The space is accessible via a laneway which connects Bloor Street West to Cumberland Street
- 140 underground parking stalls on site
- Approximately 19 ft. ceiling heights on the ground level
- Suitable for a variety of tenants and uses



100  
*Bloor Street West*

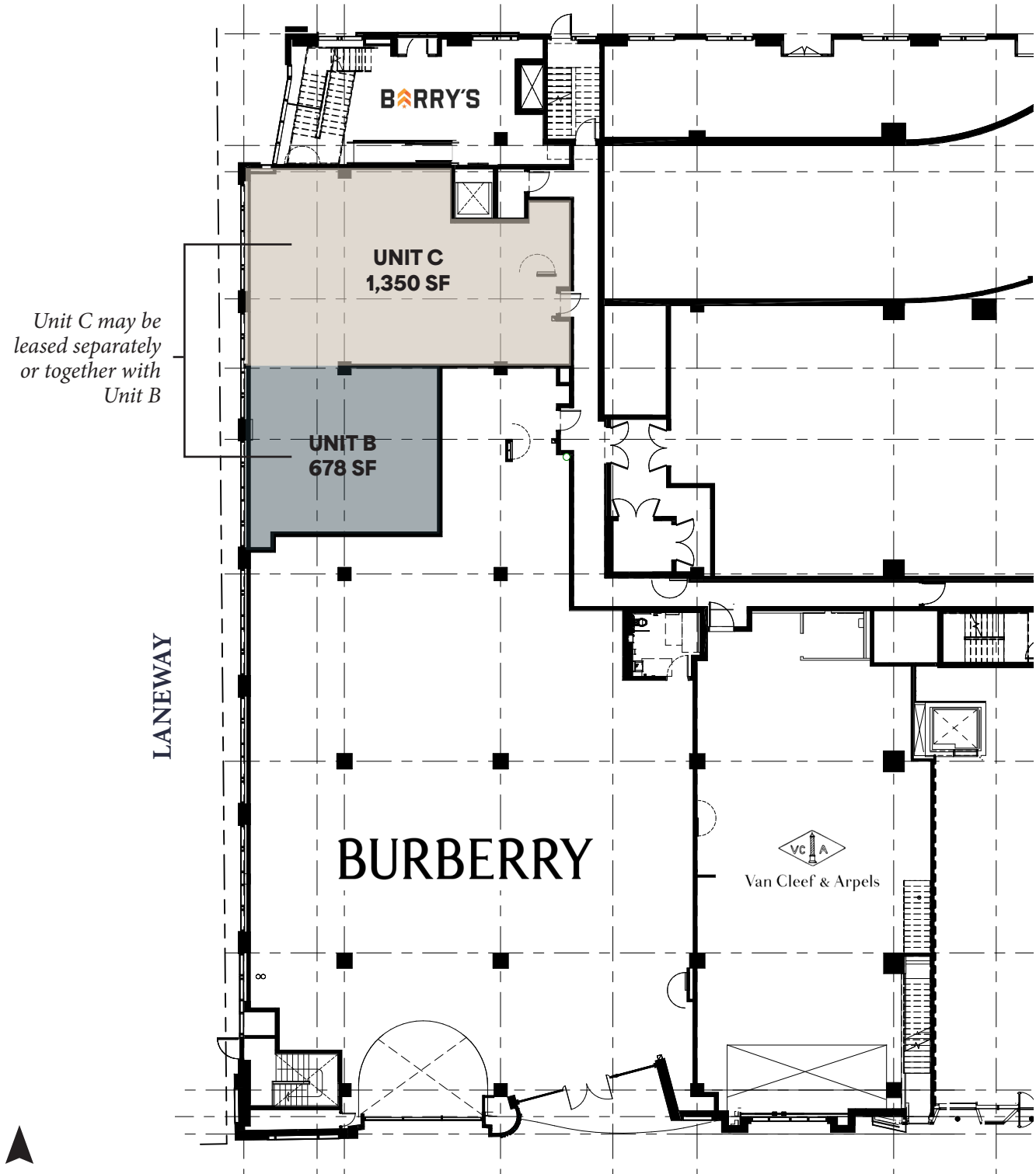


# WEST ELEVATION



# Ground Floor

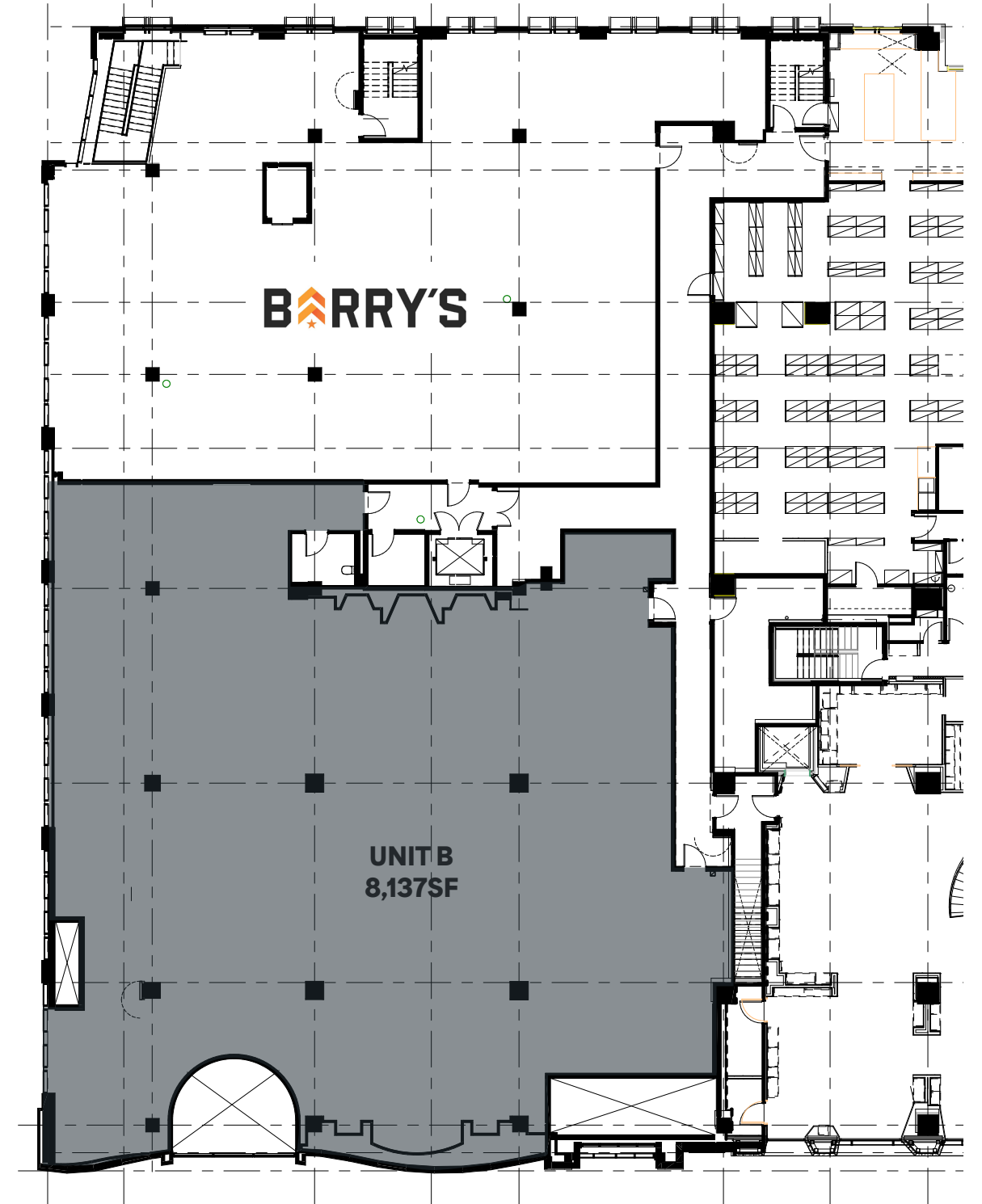
CUMBERLAND STREET



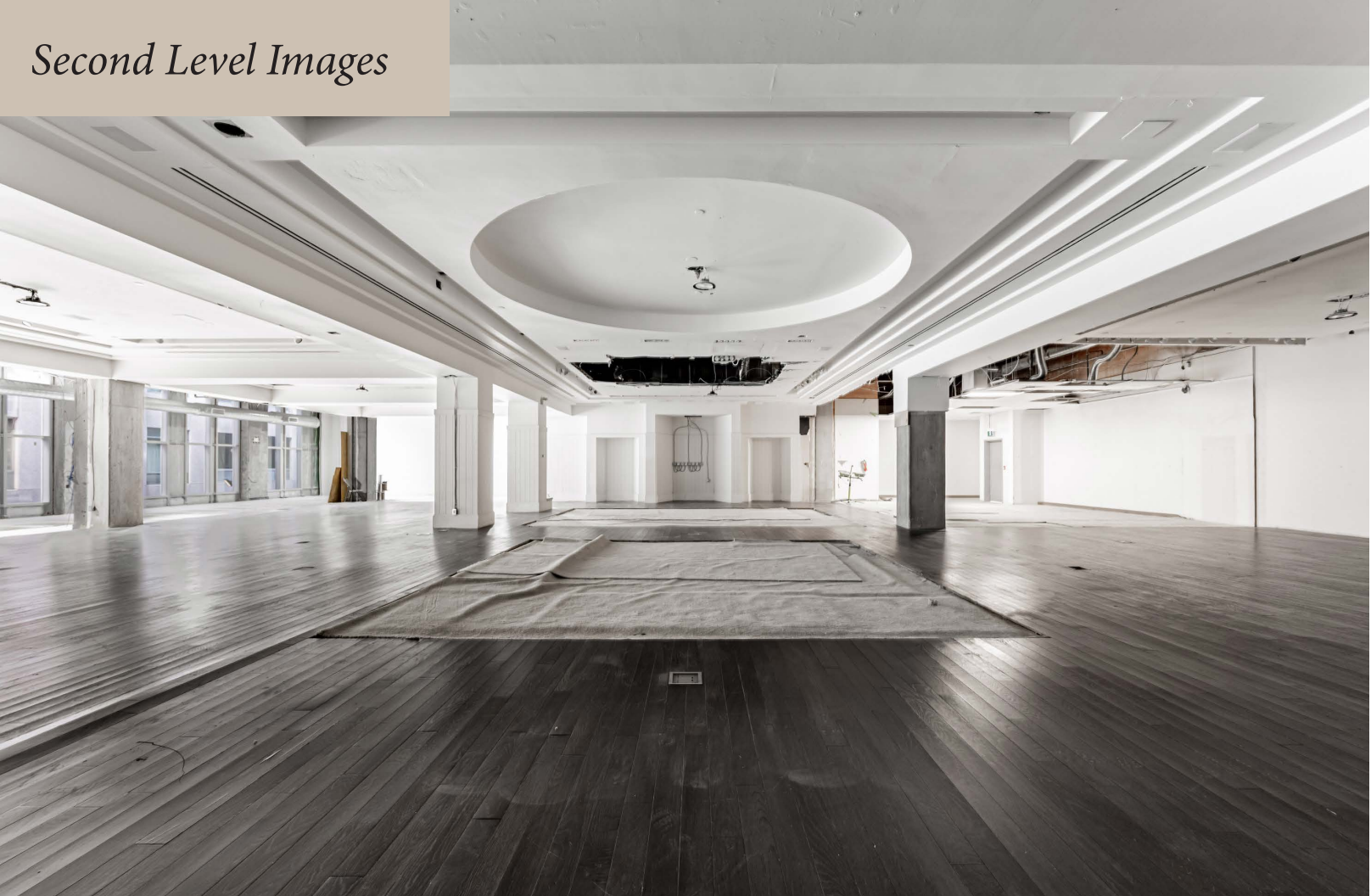
BLOOR STREET WEST

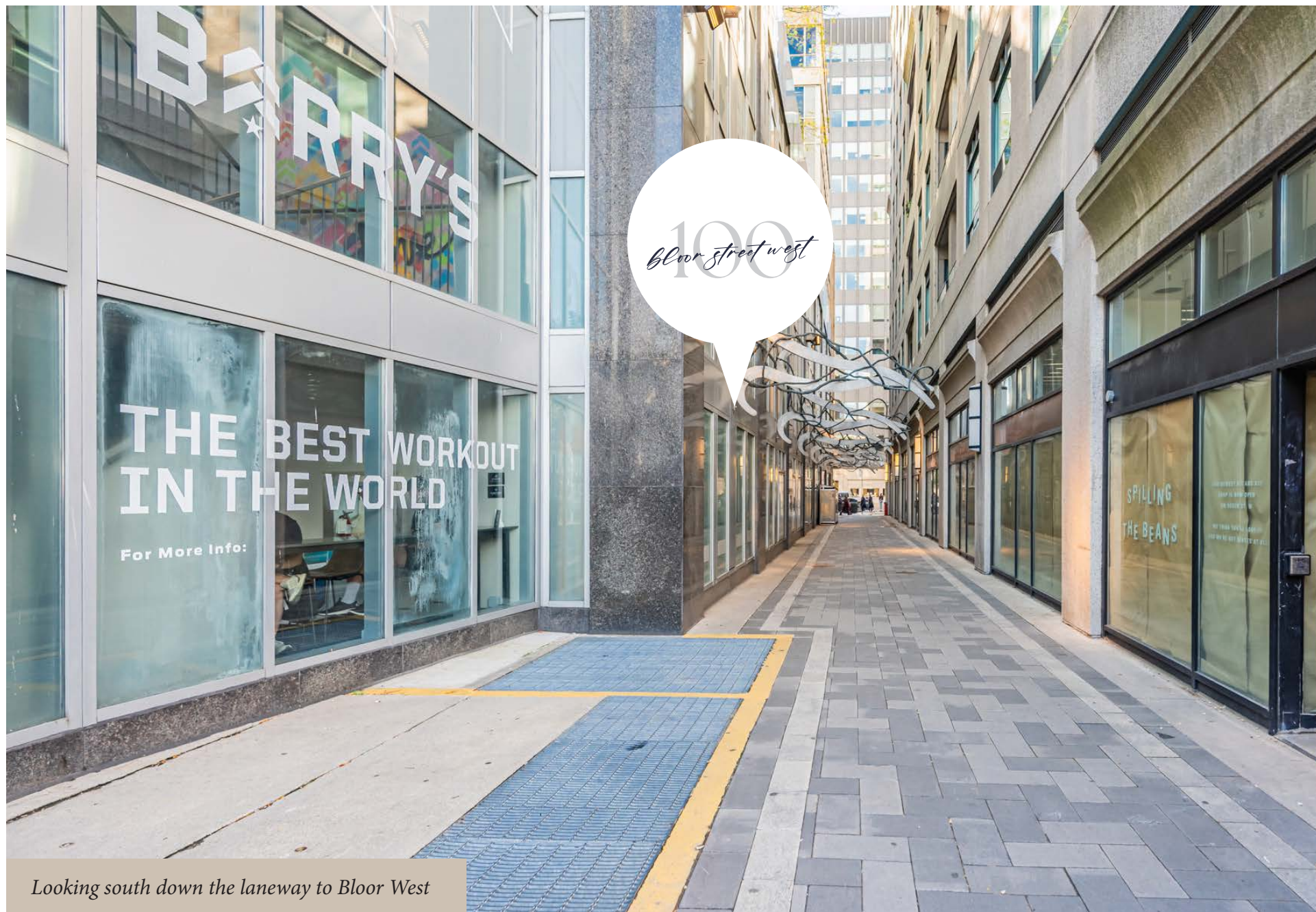
# Second Floor

CUMBERLAND STREET



BLOOR STREET WEST

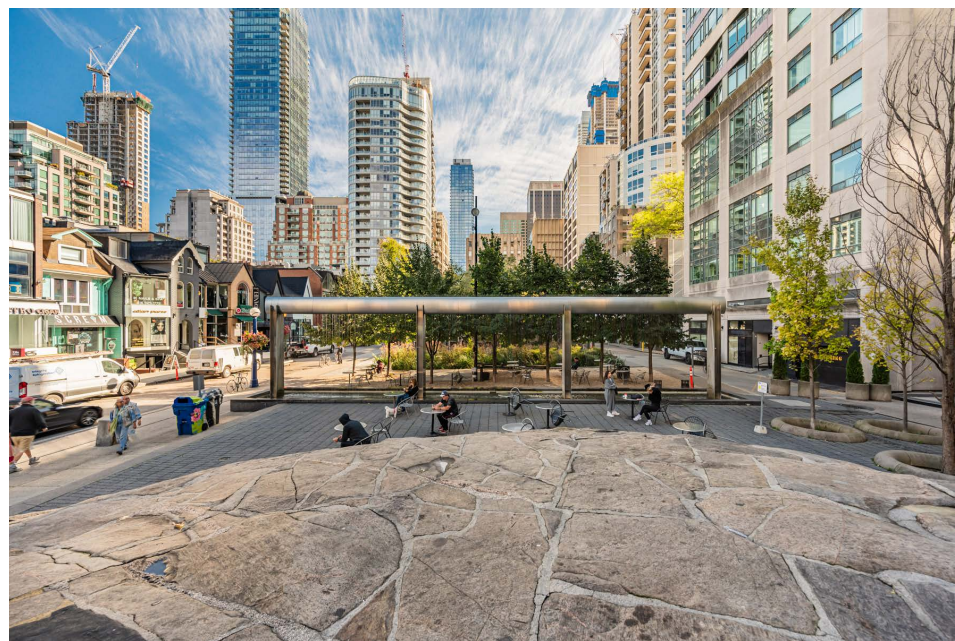




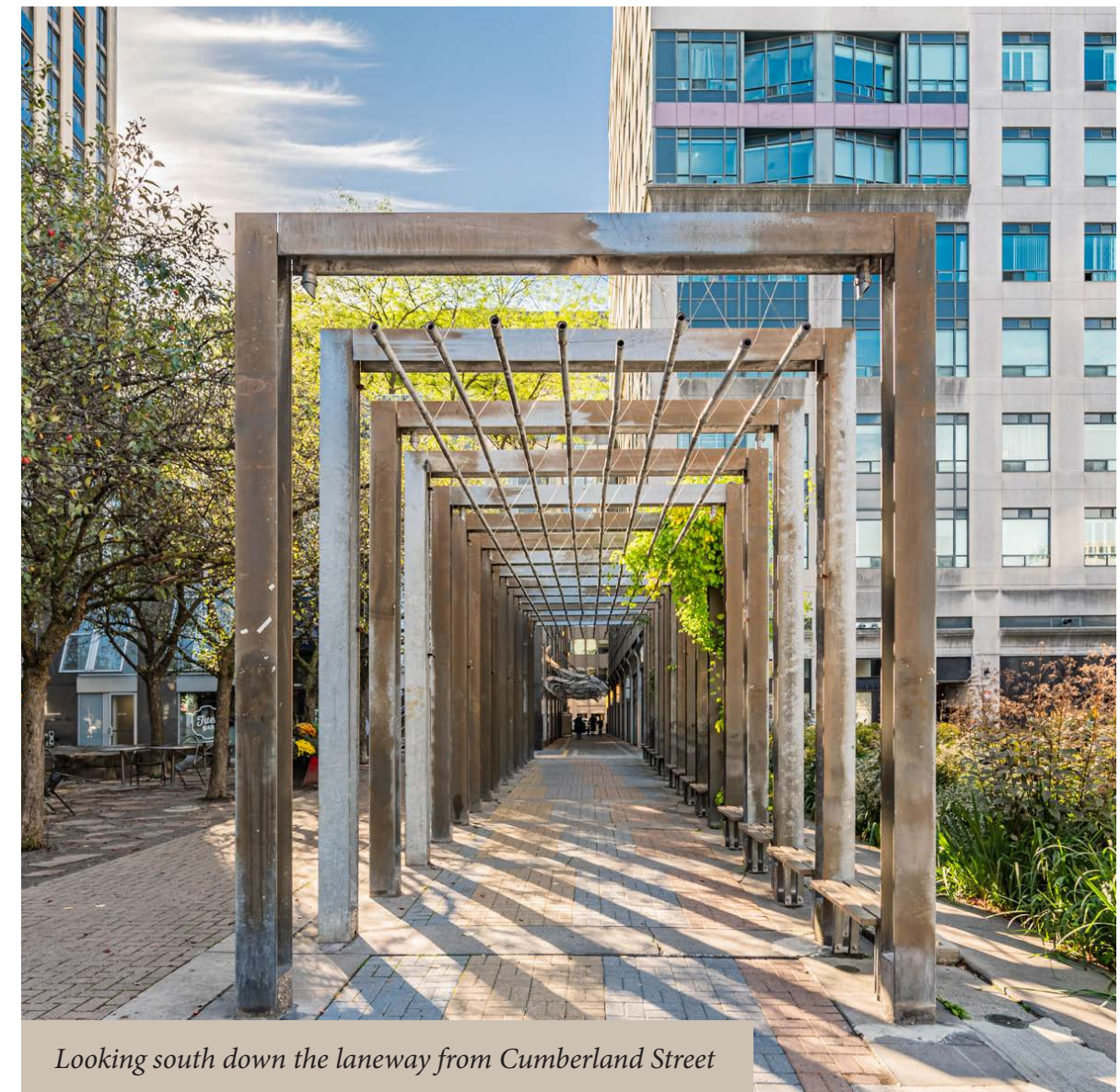
Looking south down the laneway to Bloor West



Signage Opportunity Fronting Cumberland Street

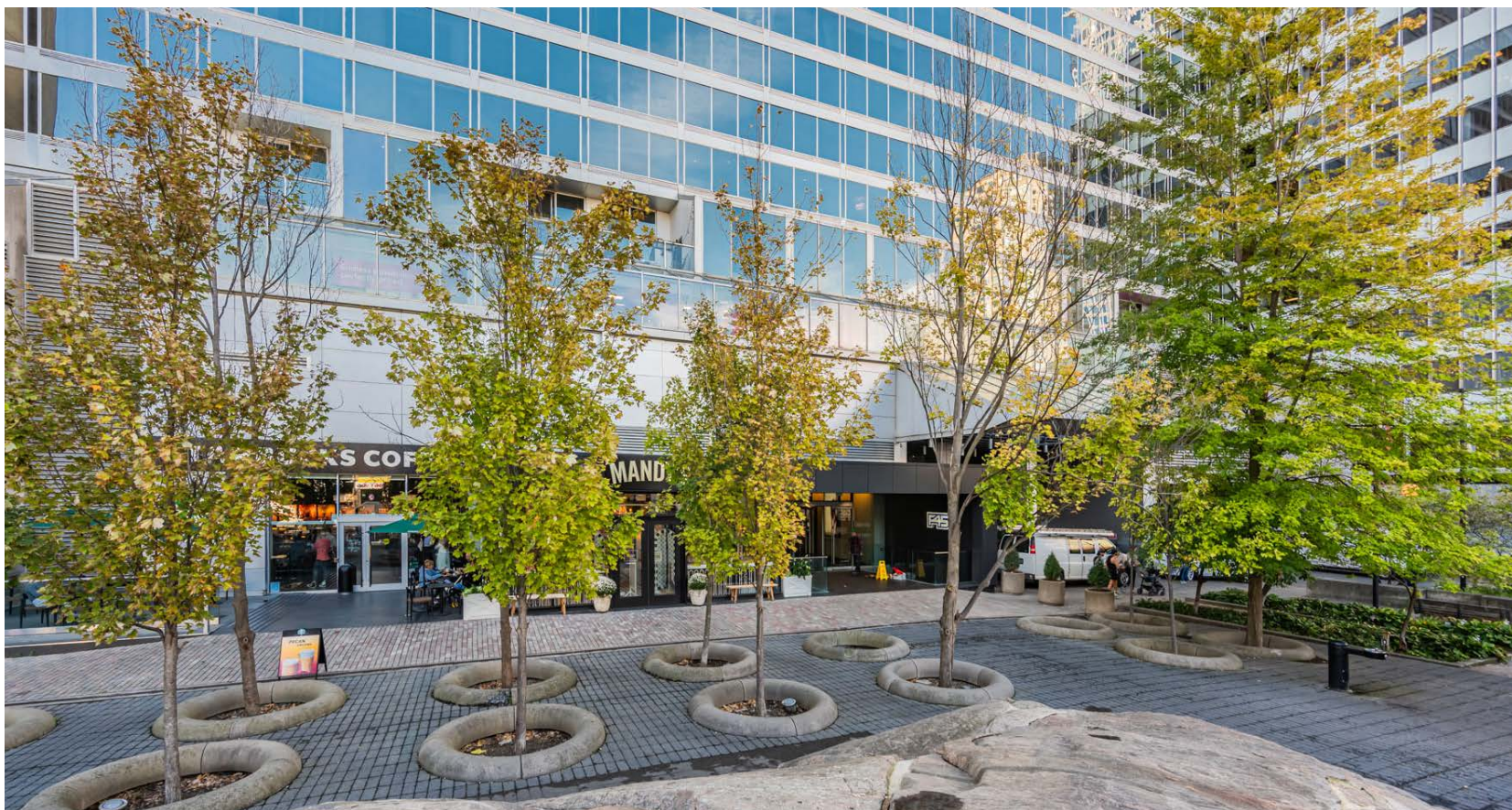


Looking north towards Yorkville Park & Cumberland St

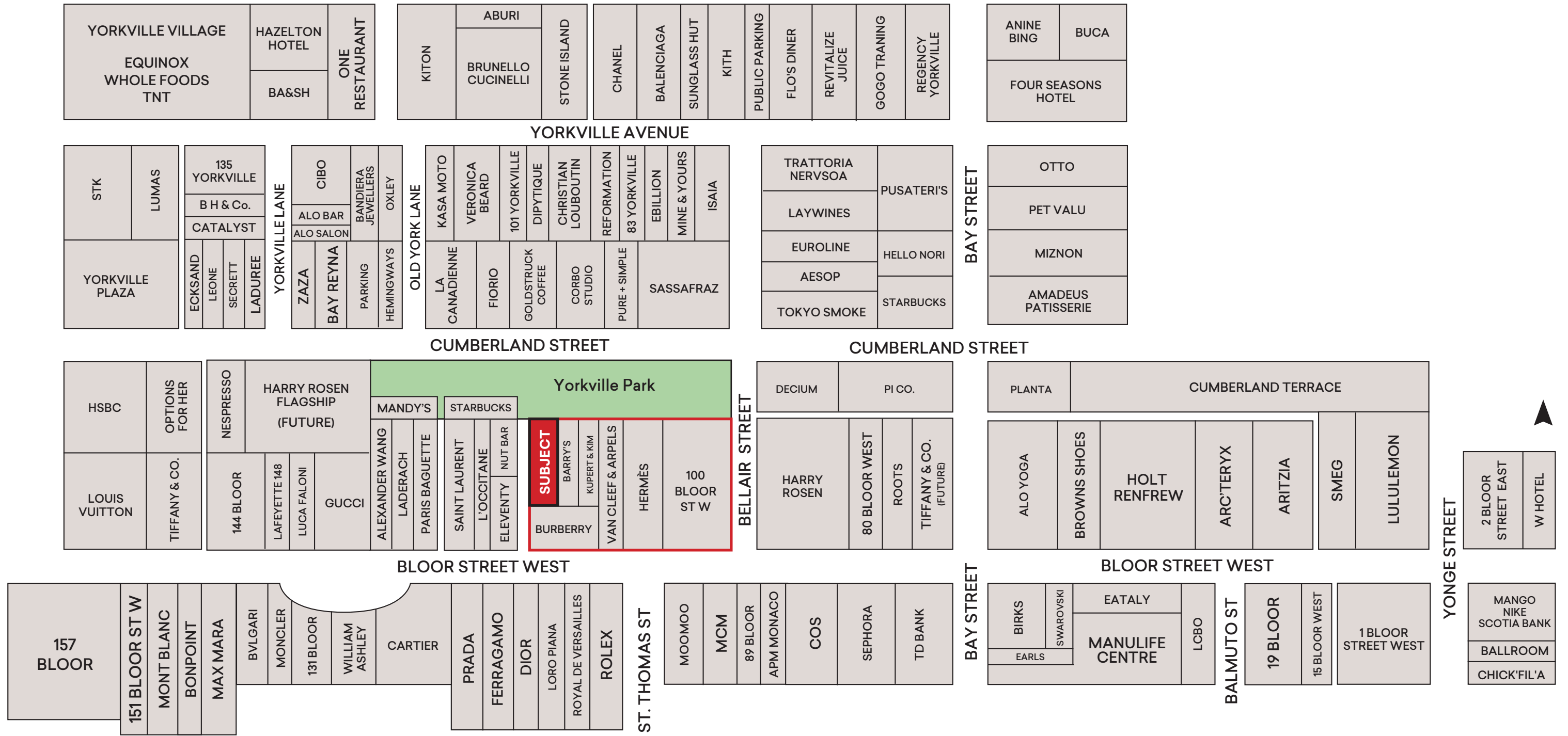


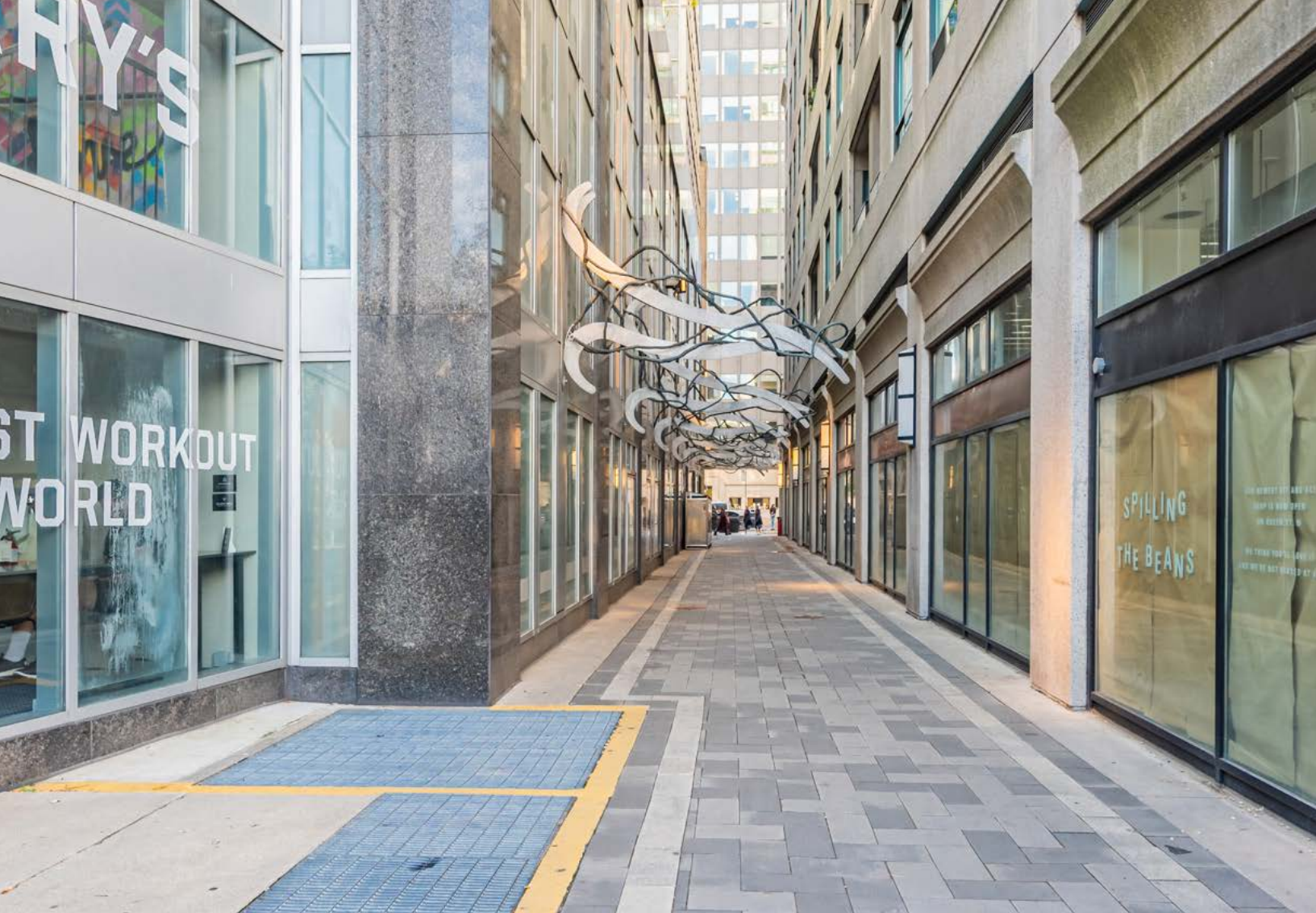
Looking south down the laneway from Cumberland Street

**Neighbouring Cumberland Street Facing Tenants** *Barry's Bootcamp, Mandy's Salads, Starbucks, Kupfert & Kim*



# Bloor-Yorkville Streetscape





## Advisory Team

---

**ARLIN MARKOWITZ\***  
Executive Vice President  
416 815 2374  
arlin.markowitz@cbre.com

**ALEX EDMISON\***  
Senior Vice President  
416 874 7266  
alex.edmison@cbre.com

**JACKSON TURNER\*\***  
Senior Vice President  
416 815 2394  
jackson.turner@cbre.com

**EMILY EVERETT\***  
Sales Associate  
647 943 4185  
emily.everett@cbre.com

\*Sales Representative \*\*Broker

**CBRE**

This disclaimer shall apply to CBRE Limited, Real Estate Brokerage, and to all other divisions of the Corporation; to include all employees and independent contractors ("CBRE"). The information set out here-in, including, without limitation, any projections, images, opinions, assumptions and estimates obtained from third parties (the "Information") has not been verified by CBRE, and CBRE does not represent, warrant or guarantee the accuracy, correctness and completeness of the Information. CBRE does not accept or assume any responsibility or liability, direct or consequential, for the Information or the recipient's reliance upon the Information. The recipient of the Information should take such steps as the recipient may deem necessary to verify the Information prior to placing any reliance upon the Information. The Information may change and any property described in the Information may be withdrawn from the market at any time without notice or obligation to the recipient from CBRE. CBRE and the CBRE logo are the service marks of CBRE Limited and/or its affiliated or related companies in other countries. All other marks displayed on this document are the property of their respective owners. All Rights Reserved.