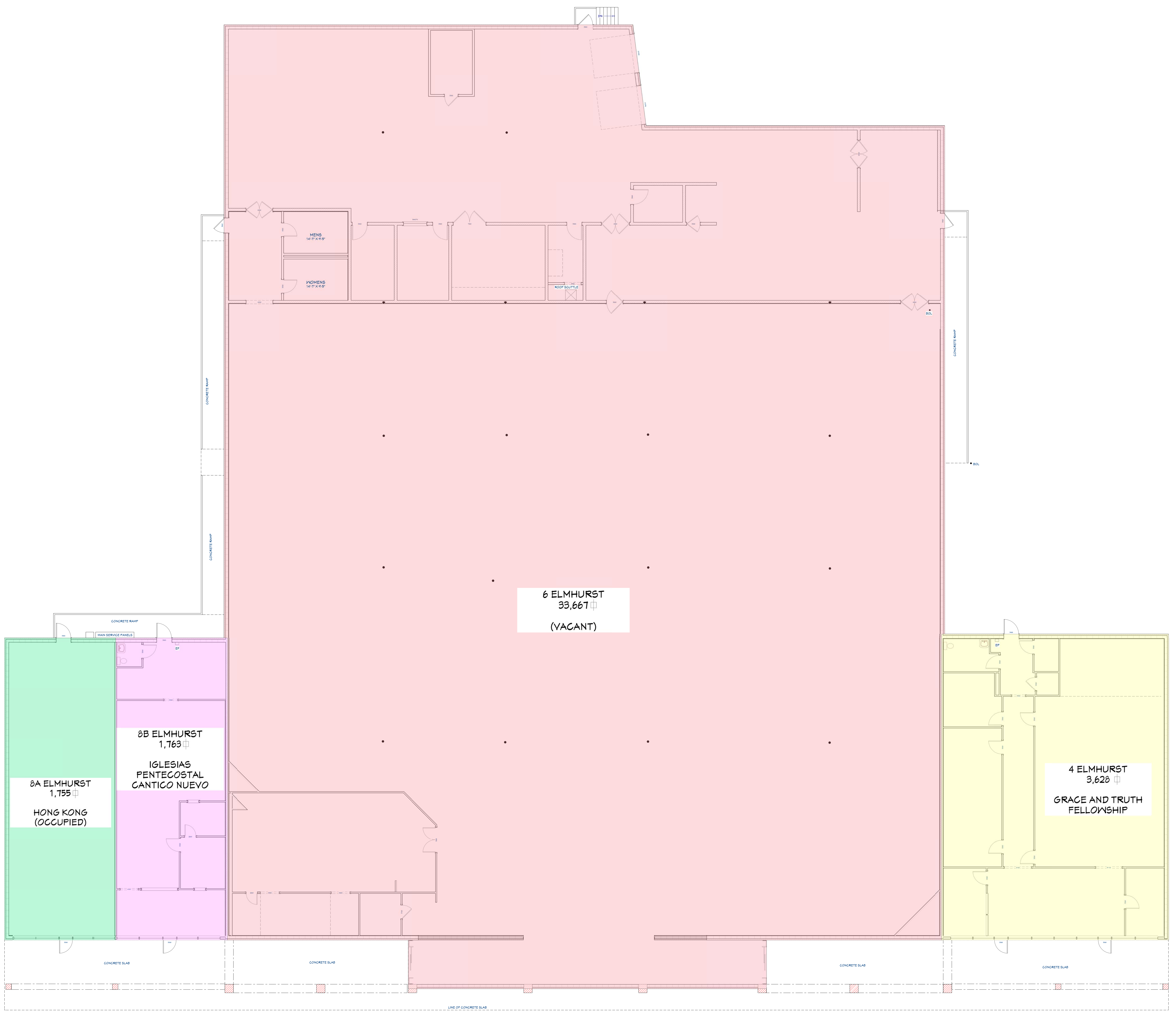


THESE DRAWINGS ARE THE PROPRIETARY WORK PRODUCT AND PROPERTY OF RH DESIGNS. DEVELOPED FOR THE EXCLUSIVE USE OF RH DESIGNS. USE OF THESE DRAWINGS AND CONCEPTS CONTAINED THEREIN WITHOUT WRITTEN PERMISSION IS PROHIBITED. © RH DESIGNS, LLC, ALL RIGHTS RESERVED



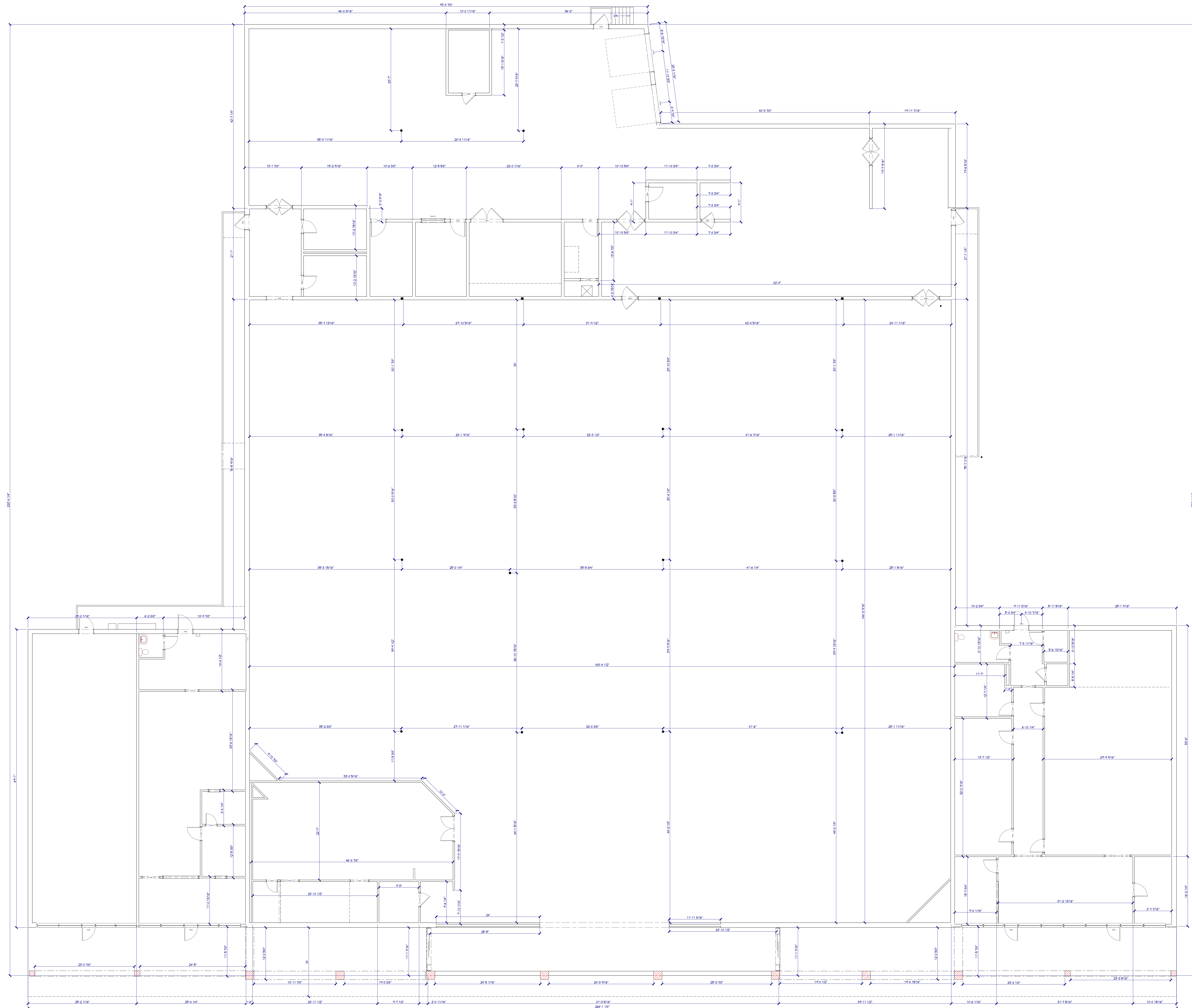
TOTAL AREA
41809 SQ FT

EXISTING CONDITIONS
LEE HALL CENTER
 6 ELMHURST STREET,
 NEWPORT NEWS, VIRGINIA

DATE: 4/15/2024
 DRAWN BY: FNH
 SHEET SIZE: 36x48

SCALE: 1/8" = 1'-0"

FLOOR PLANS



THESE DRAWINGS ARE THE PROPRIETARY WORK PRODUCT AND PROPERTY OF RH DESIGNS. DEVELOPED FOR THE EXCLUSIVE USE OF RH DESIGNS. USE OF THESE DRAWINGS AND CONCEPTS CONTAINED THEREIN WITHOUT WRITTEN PERMISSION IS PROHIBITED. © RH DESIGNS, LLC, ALL RIGHTS RESERVED

EXISTING CONDITIONS
LEE HALL CENTER
 6 ELMHURST STREET,
 NEWPORT NEWS, VIRGINIA

DATE: 4/15/2024
 DRAWN BY: FNH
 SHEET SIZE: 36x48

SCALE: 1/8" = 1'-0"

DIMENSION FLOOR PLANS