

FOR LEASE | 1,951 SF

754 YONGE STREET

CBRE



BRIAN PORTER*
Senior Vice President
416 847 3242
Brian.Porter@cbre.com

JENNIFER MILLAR*
Associate Vice President
647 328 8859
Jennifer.Millar@cbre.com

*Sales Representative

CBRE LIMITED, Real Estate Brokerage
145 King Street West, Suite 1100, Toronto, ON
M5H 1J8 | www.cbre.ca

754 YONGE STREET

PROPERTY DETAILS

SUITE 300

SIZE 1,951 SF

AVAILABILITY Immediate

ASKING RENT Contact Listing Agents

- Built out with 6 large offices/meeting rooms, kitchenette, and in-suite washrooms
- Signage opportunity
- Ideally located at the busy intersection of Yonge Street and Bloor Street
- Close proximity to neighbourhood amenities and public transit (Bloor - Yonge and Wellesley Subway Stations).

754
YONGE
STREET

PROPERTY PHOTOS

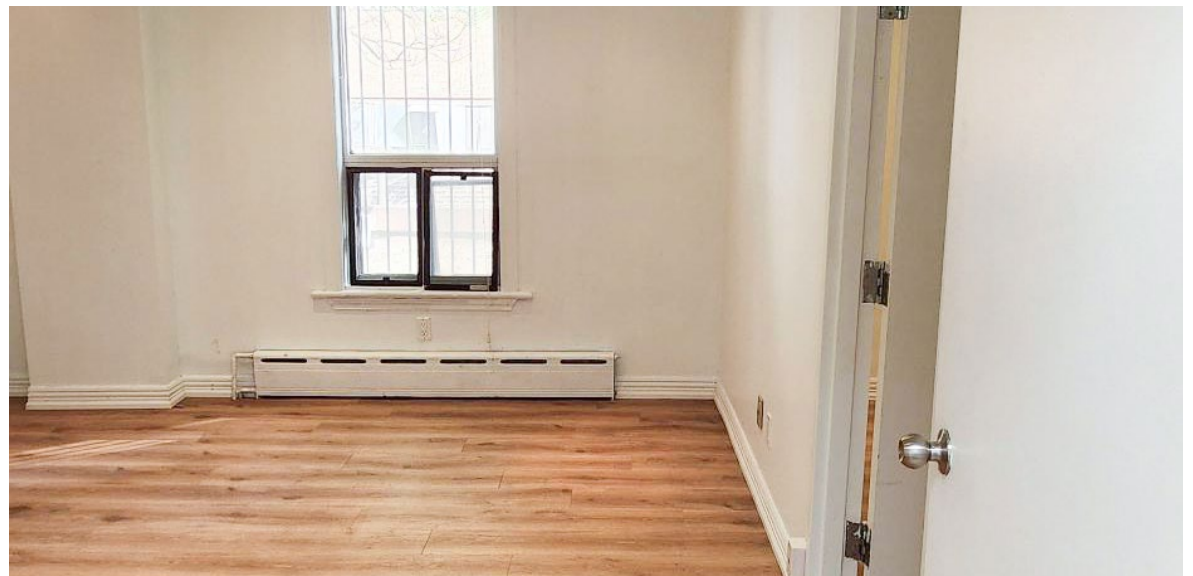
CBRE



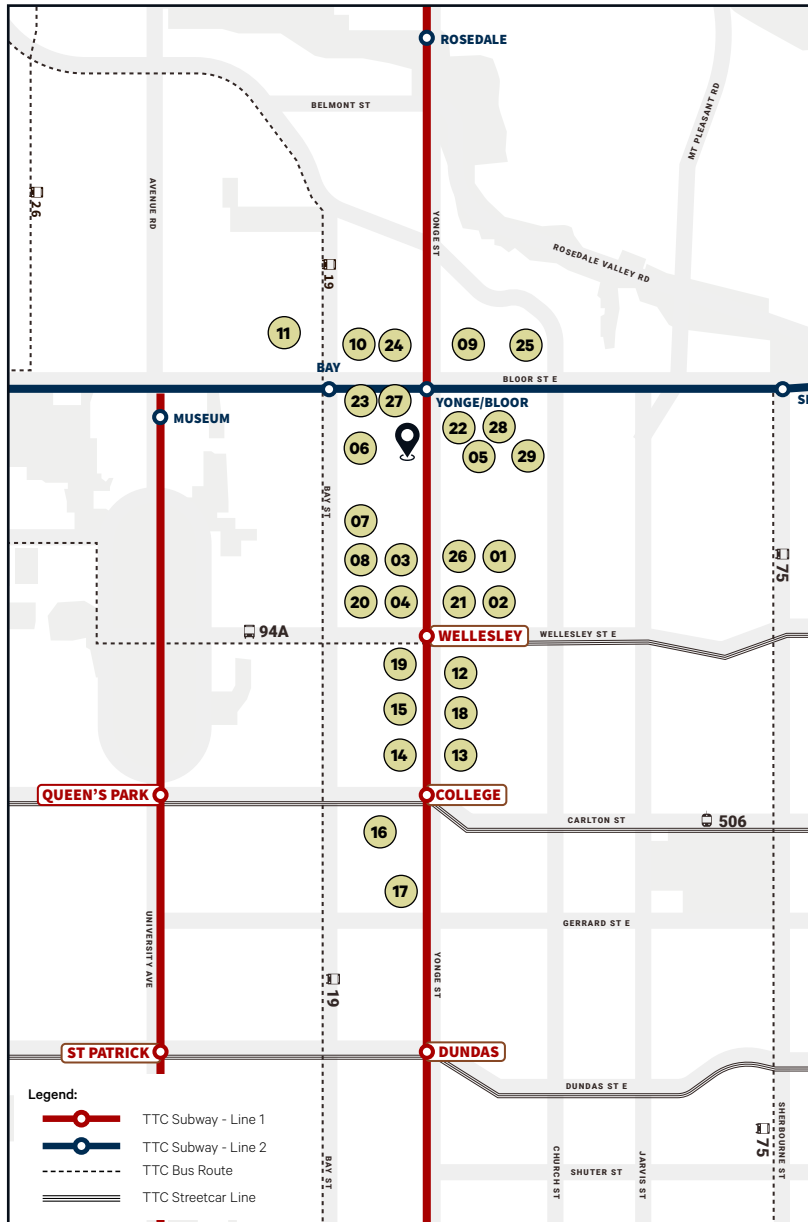
754
YONGE
STREET

PROPERTY PHOTOS

CBRE



AMENITY MAP



Food & Drink

- | | | | | | | | | | | | | | | |
|--|--|---|--|---|--|---|--|--|--|---|---|--|---|---|
| 01. Kothur Indian Cuisine SHINYI Handmade Dumplings The Bar Jokbal Night Market Artful Dodger Pub Ehwa Restaurant Marathon Cafe Downtown Piedmont Coffee Bar | 02. Miss Fu In Chengdu Fresh Pasta To Go Bumpkin's Restaurant & Lounge Storm Crow Manor Pho Anh Vu Toronto Good Earth Coffeehouse | 03. Cabano's Cheeseburgers The Diner's Corner Avelo Restaurant A BBQ House Sansotei Ramen Butter Chicken Roti Ethiopian House | 04. Lao Lao Bar Bar Volo Bao House Not Just Noodles ramen RAIJIN | 05. Constantine Toronto Toro Toro Sushi and Poke NAAN KABOB Nani's Gelato Chick-fil-A Mos Mos Coffee Cafe Landwer | 06. Mogouyan Hand Pulled Noodle Earls Kitchen + Bar Eatly Toronto Scaccia | 07. Okonomi House Restaurant Sushi Umi - Toronto Slab Burgers The Slab Pizza Starbucks Sushi On Bay | 08. Petit Potato Sol Pizza Tokyo Sushi Pizza Nova Shawarma Q | 09. Starbucks Subway Tim Hortons Salad Days | 10. PLANTA The Pilot Kathmandu Restaurant Miznon Starbucks The One Caviar Bar | 11. Hazukido (Yorkville) Pi Co. Pizza Bar The MoMo House Trattoria Nervosa | 12. Tim Hortons Egg Club Wellesley HEYTEA | 13. Seoul Gamjatang The Bistro Pizza Pizza | 14. Edo Japan Hoops Sports Bar & Grill W Burger Bar McDonald's Souper Hot Pot | 15. 555 Boat Noodles Darvish Restaurant Kream Dessert Bone Soup Malatang |
|--|--|---|--|---|--|---|--|--|--|---|---|--|---|---|

Shopping

- | | | | | | | | | | |
|--|--|-------------------------------------|----------------------------------|--|----------------------|------------|--|---|--------------------------|
| 16. Winners Metro Farm Boy Dollarama The Brick LCBO | 17. IKEA Toronto Downtown Aura Concourse Shopping Mall Marshalls & HomeSense | 18. Shoppers Drug Mart Bulk Barn | 19. Galleria Supermarket Express | 20. Rabba Fine Foods Shoppers Drug Mart | 21. Rabba Fine Foods | 22. H Mart | 23. Independent City Market Bloor Manulife Centre | 24. Holt Renfrew Centre Aritzia Alo | 25. The Market by Longos |
|--|--|-------------------------------------|----------------------------------|--|----------------------|------------|--|---|--------------------------|

Fitness

- | | | | |
|---|----------------------|--|------------------|
| 26. Hone Fitness Innovative Fitness at The Ivy | 27. Goodlife Fitness | 28. AVANT Yorkville SHINE FIT Dance Fitness | 29. Lyft Fitness |
|---|----------------------|--|------------------|

754 YONGE STREET

BRIAN PORTER*
Senior Vice President
416 847 3242
Brian.Porter@cbre.com

JENNIFER MILLAR*
Associate Vice President
647 328 8859
Jennifer.Millar@cbre.com

CBRE LIMITED, Real Estate Brokerage
145 King Street West, Suite 1100
Toronto, ON | M5H 1J8
www.cbre.ca

CBRE

*Sales Representative

This disclaimer shall apply to CBRE Limited, Real Estate Brokerage, and to all other divisions of the Corporation; to include all employees and independent contractors ("CBRE"). The information set out herein, including, without limitation, any projections, images, opinions, assumptions and estimates obtained from third parties (the "Information") has not been verified by CBRE, and CBRE does not represent, warrant or guarantee the accuracy, correctness and completeness of the Information. CBRE does not accept or assume any responsibility or liability, direct or consequential, for the Information or the recipient's reliance upon the Information. The recipient of the Information should take such steps as the recipient may deem necessary to verify the Information prior to placing any reliance upon the Information. The Information may change and any property described in the Information may be withdrawn from the market at any time without notice or obligation to the recipient from CBRE. CBRE and the CBRE logo are the service marks of CBRE Limited and/or its affiliated or related companies in other countries. All other marks displayed on this document are the property of their respective owners. All Rights Reserved.