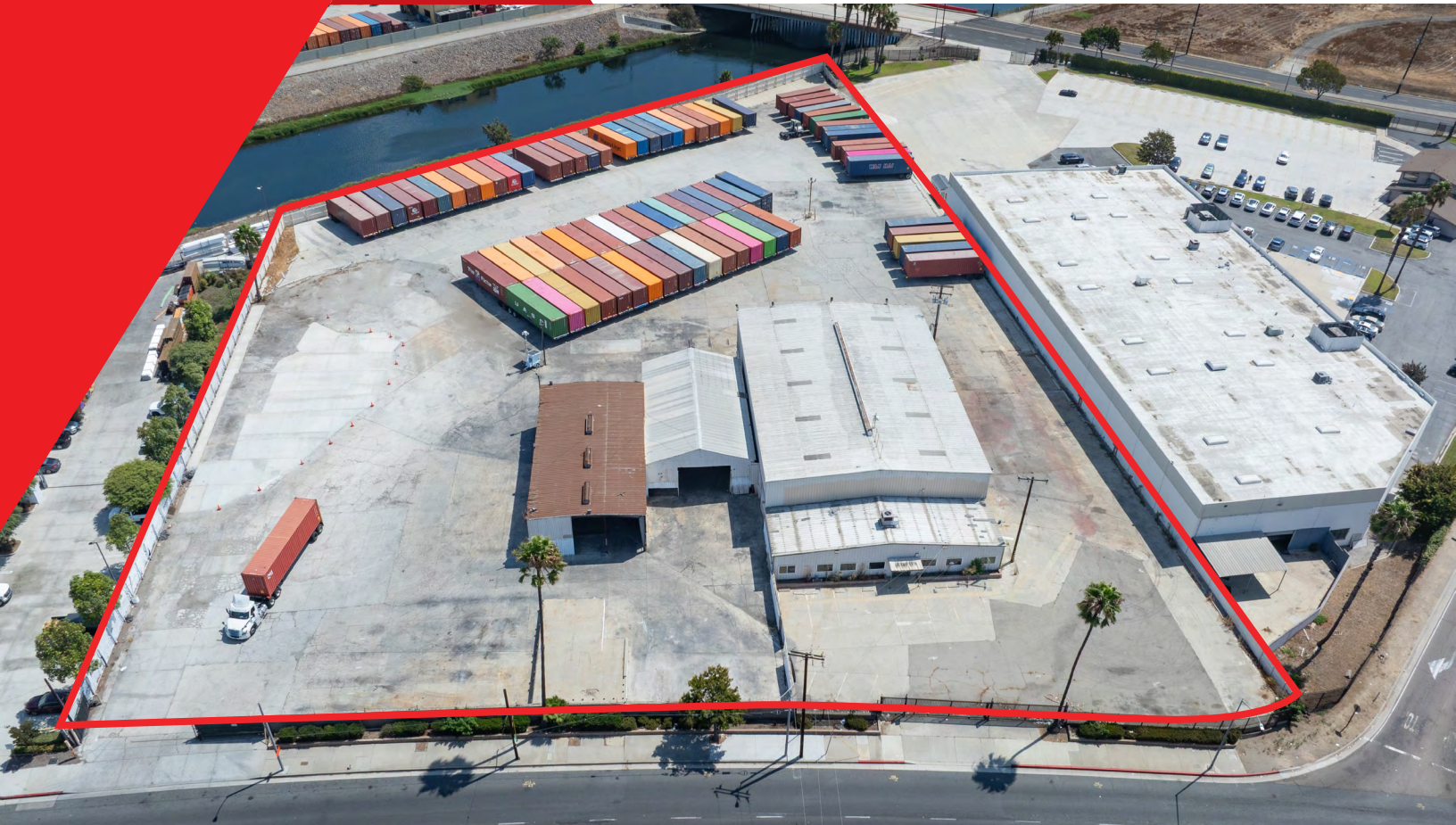





FOR LEASE

±3.89 AC STORAGE YARD
STRATEGIC SOUTH BAY LOCATION



19204 S. FIGUEROA ST, CARSON

PROPERTY FEATURES:

- ±3.89 Acre Fenced Concrete Yard
- ±17,600 SF Across 3 Buildings
- ±2,000 SF of Office Space
- 2,500 Amps (277/480v) (verify)
- 3 Oversized Ground Level Doors
- 4 Exterior Dock Positions
- Freeway adjacent, easy access to  ,  , and 
- ±10 Miles From the Ports

For More Information, Contact:

STEFFAN MORRIS
Senior Vice President
License ID# 02010049
949.790.3166
smorris@leeirvine.com

BOBBY MARTINEZ
Senior Associate
License ID# 02204507
949.790.3104
bmartinez@leeirvine.com

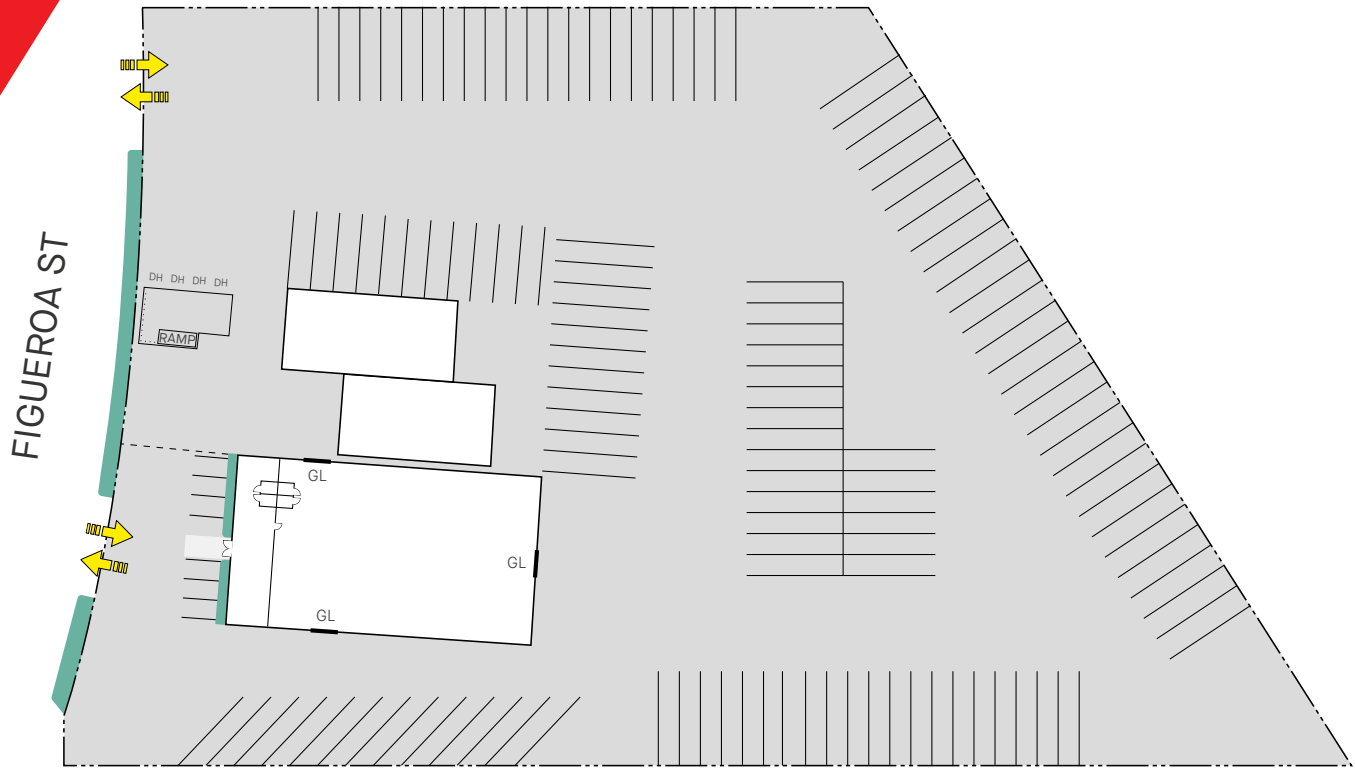
LEE & ASSOCIATES
COMMERCIAL REAL ESTATE SERVICES

Lee & Associates - Irvine
9838 Research Drive
Irvine, CA 92618
Lic. 01044791
lee-irvine.com

FOR LEASE

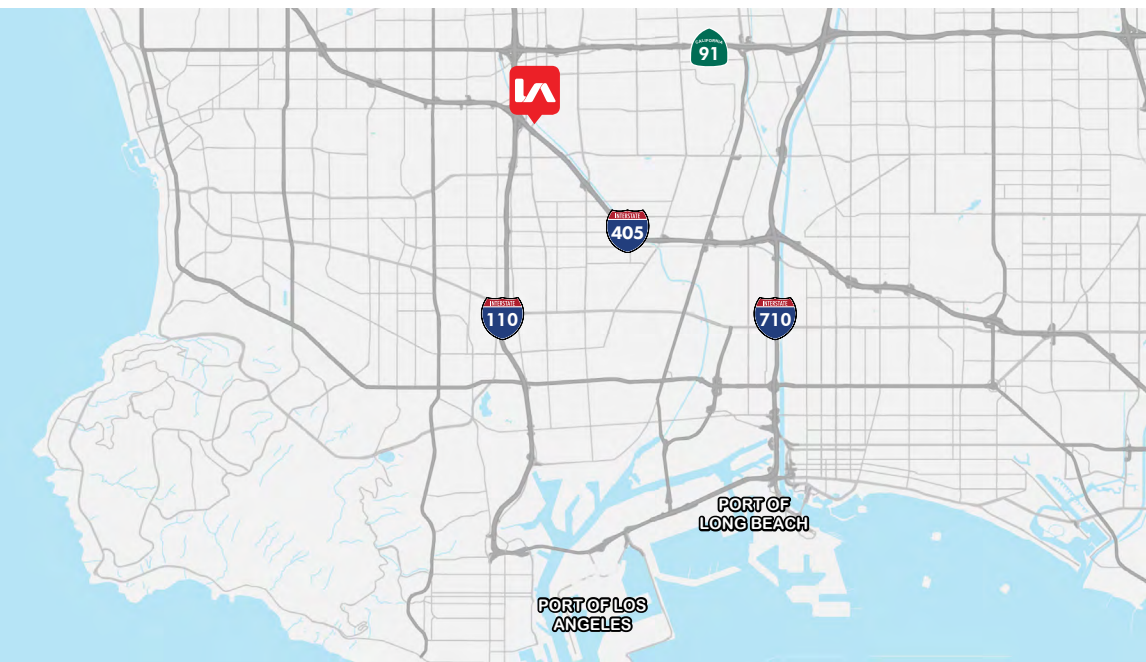
±3.89 AC STORAGE YARD
STRATEGIC SOUTH BAY LOCATION

SITE PLAN



*Conceptual Only. Subject to Verification

19204 S. FIGUEROA ST, CARSON



For More Information, Contact:

STEFFAN MORRIS
Senior Vice President
License ID# 02010049
949.790.3166
smorris@leeirvine.com

BOBBY MARTINEZ
Senior Associate
License ID# 02204507
949.790.3104
bmartinez@leeirvine.com