



ONE SANSOME  
SAN FRANCISCO

NEWMARK

Innovation Meets Opportunity

# A San Francisco Icon Reimagined

One Sansome is more than just an address; it is a statement. This 42-story, Class A landmark defines the San Francisco Financial District skyline and offers a unique experience where historic prestige meets innovative design, delivering one-of-a-kind amenities in the heart of the San Francisco Financial District.

On the ground floor, the reimagined Conservatory includes nearly 16,000 square feet of event space, highlighted by the Atrium, Holbrook House bar and restaurant, and the elegant North Lobby. This unique amenity provides an exceptional venue for events, meetings, and gatherings, combining sophisticated hospitality with a distinctive ambiance.

Additionally, the building features efficient destination elevators, move-in-ready furnished offices, a tenant lounge and business center, a fully equipped gym, direct access to Montgomery Street Bart & Muni station.

[onesansome.com](https://onesansome.com)



## Building Amenities & Improvements

Experience the unique amenities at One Sansome, featuring a newly reimagined 16,000-square-foot ground floor conservatory and atrium designed by Albert Pissis in 1910. The conservatory is perfect for hosting special events and various gatherings and is unique in the Bay Area. The Holbrook House, located on the ground floor, offers a restaurant and bar with bespoke interiors, providing an exceptional hospitality experience.



# One Sansome by the Numbers

42

STORIES

624,104

TOTAL RSF

17,500

TYPICAL FLOOR PLATE

12'6"

CEILINGS

LEED Platinum  
& Energy Star

CERTIFIED

24/7  
Access

SECURITY



# At the Center of Connectivity

Perfect central location with direct secure access to the Montgomery Street Station, BART and Muni. One Sansome is located on the city's vibrant core, with plenty of amenities of the Financial District.



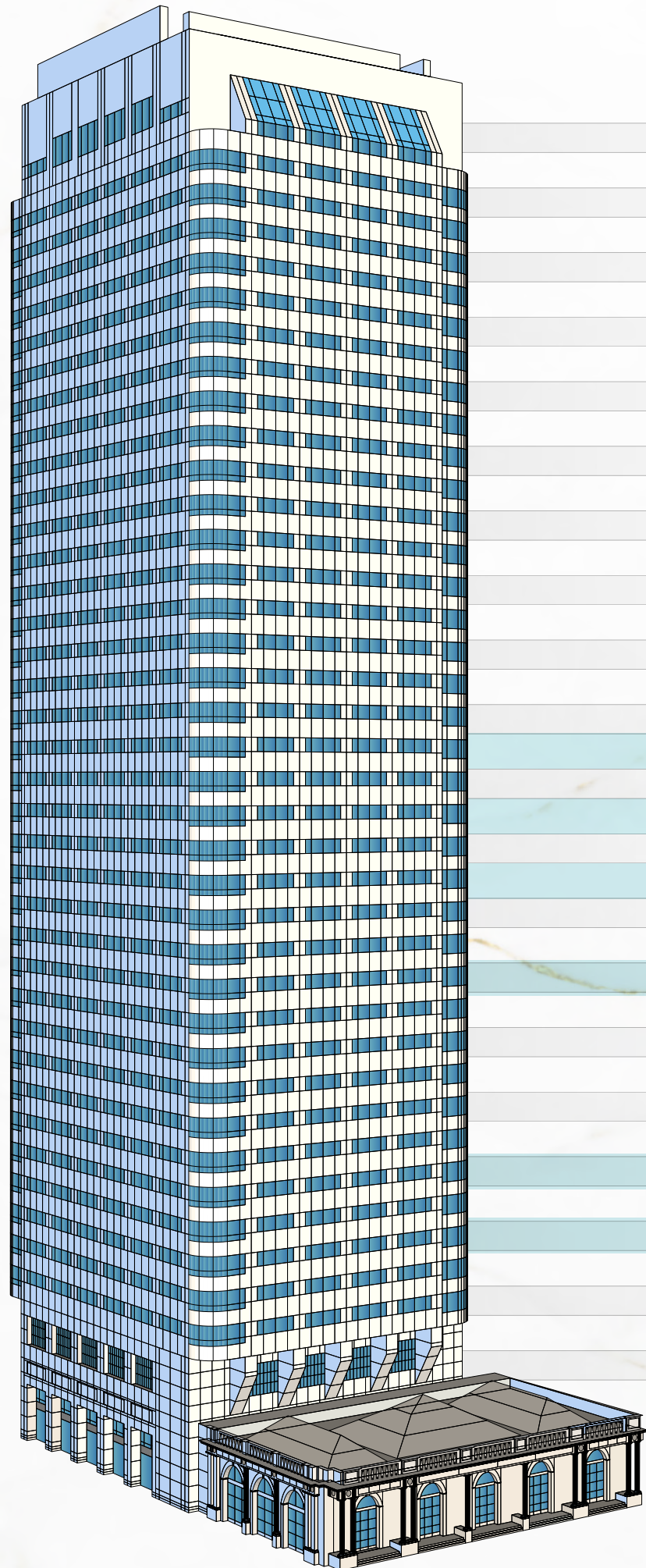
**DIRECT ACCESS TO MONTGOMERY STREET BART/MUNI**



 WALKING TIME (min)	 DRIVING TIME (min)
0 BART/MUNI	10 BAY BRIDGE
10 UNION SQUARE	20 OAKLAND
12 FERRY BUILDING	25 SFO
22 ORACLE PARK	27 MARIN
	35 OAKLAND AIRPORT
	50 PALO ALTO
	60 SAN JOSE

**P** Parking

# Your Office Space - Current Availabilities



42				
41				
40				
39				
38				
37				
36				
35				
34				
33				
32				
31				
30				
29				
28				
27				
26				
25				
24				
23				
22	STE 2270: 4,899 SF	<a href="#">VIEW FLOOR PLAN</a>		
21				
20	STE 2070: 1,654 SF	<a href="#">VIEW FLOOR PLAN</a>		
19				
18	STE 1800: 5,701 SF	<a href="#">VIEW FLOOR PLAN</a>	1810: 3,009 SF	<a href="#">VIEW FLOOR PLAN</a>
17				
16				
15	STE 1500: 9,706 SF	<a href="#">VIEW FLOOR PLAN</a>		
14				
13				
12				
11				
10				
9	STE 925: 3,015 SF	<a href="#">VIEW FLOOR PLAN</a>		
8				
7	STE 725: 2,265 SF	<a href="#">VIEW FLOOR PLAN</a>	740: 1,330 SF	<a href="#">VIEW FLOOR PLAN</a>
6				
5				
4				
3				
Ground				

# 7<sup>th</sup> Floor | Suite 725

2,265 SF

Available in 30 Days

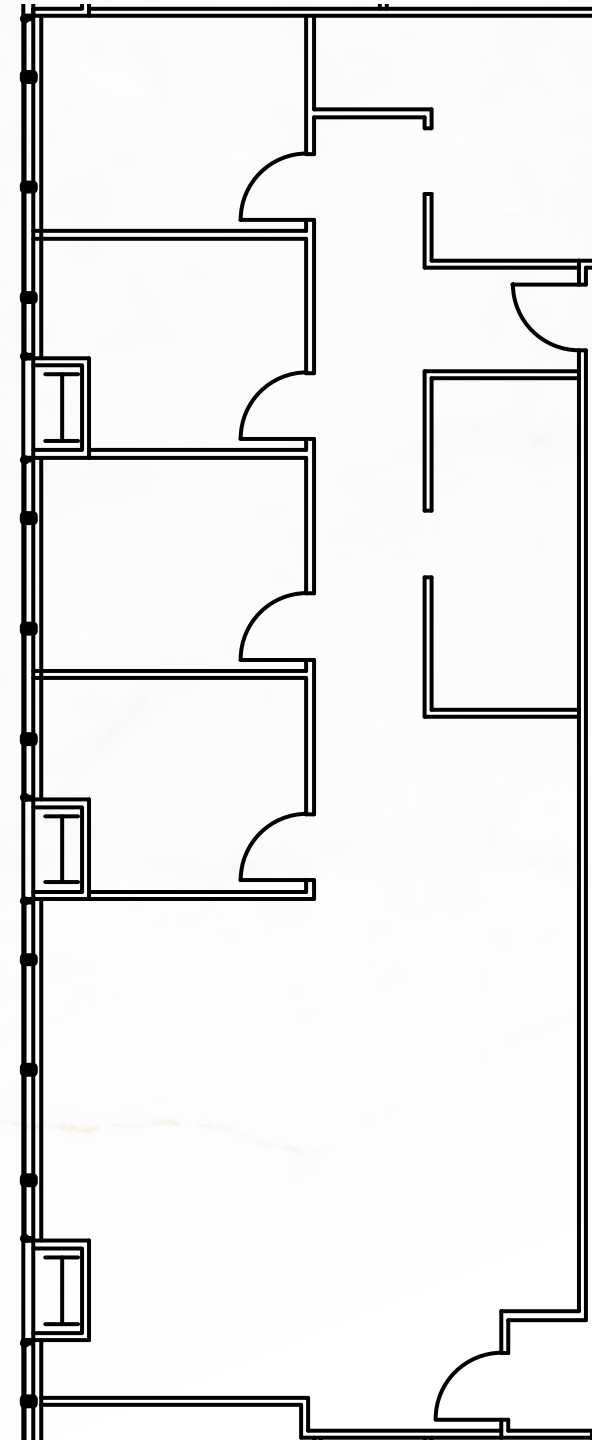
4 Private Offices

1 Conference Room

Kitchen

Storage Area

Open Area for Workstations

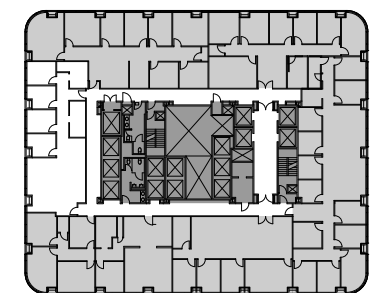


[VIEW FULL AVAILABILITIES](#)

**MIKE BROWN**  
415.274.4423  
mike.brown@nmrk.com

**ROMAN ADLER**  
415.274.4434  
roman.adler@nmrk.com

**AARON GILLESPIE**  
415.445.5153  
aaron.gillespie@nmrk.com



SUTTER ST.

SANSOME ST.

# 7<sup>th</sup> Floor | Suite 740

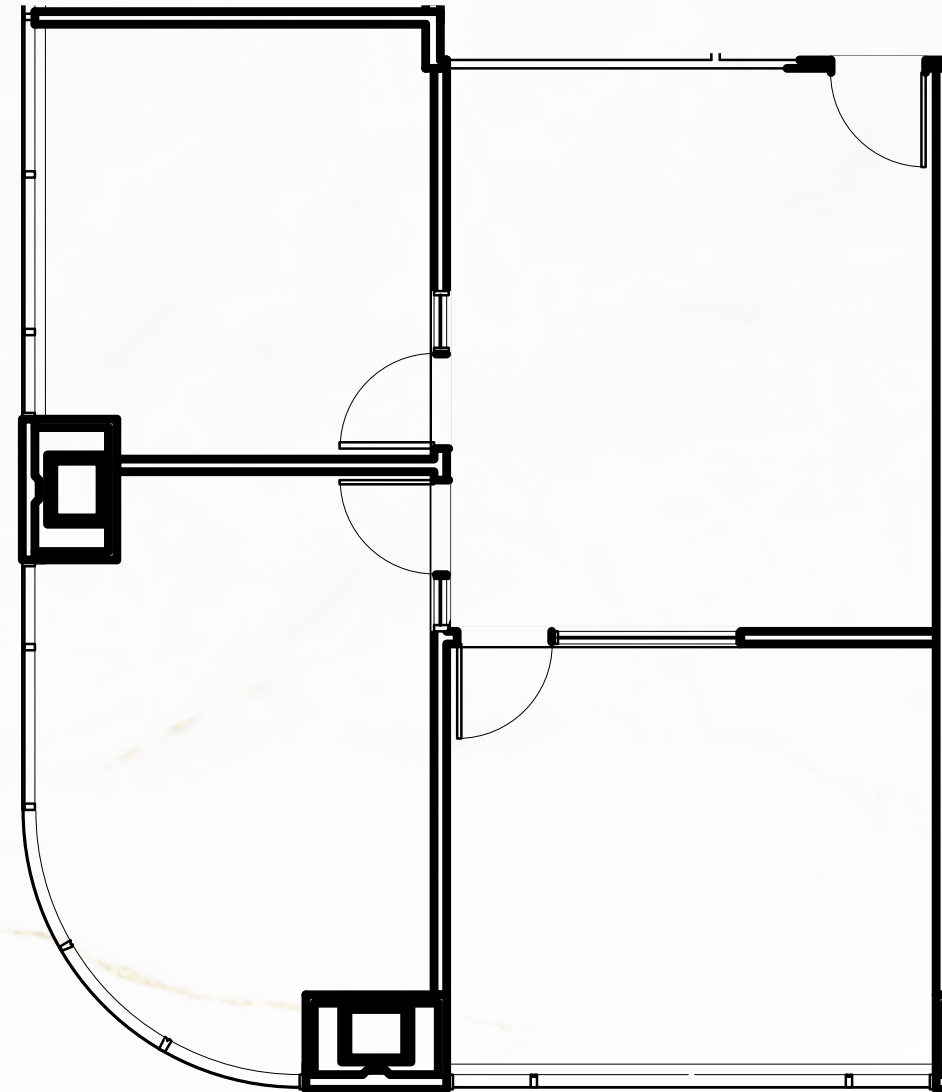
[VIEW FULL AVAILABILITIES](#)

1,330 SF

Available in 30 Days

3 Windowline Offices/Meeting Rooms

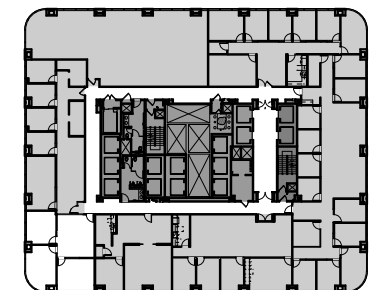
Kitchenette



**MIKE BROWN**  
415.274.4423  
mike.brown@nmrk.com

**ROMAN ADLER**  
415.274.4434  
roman.adler@nmrk.com

**AARON GILLESPIE**  
415.445.5153  
aaron.gillespie@nmrk.com



SANSOME ST.

SUTTER ST.

# 9<sup>th</sup> Floor | Suite 925

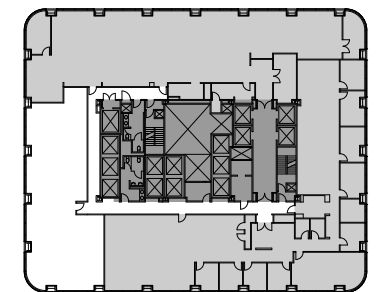
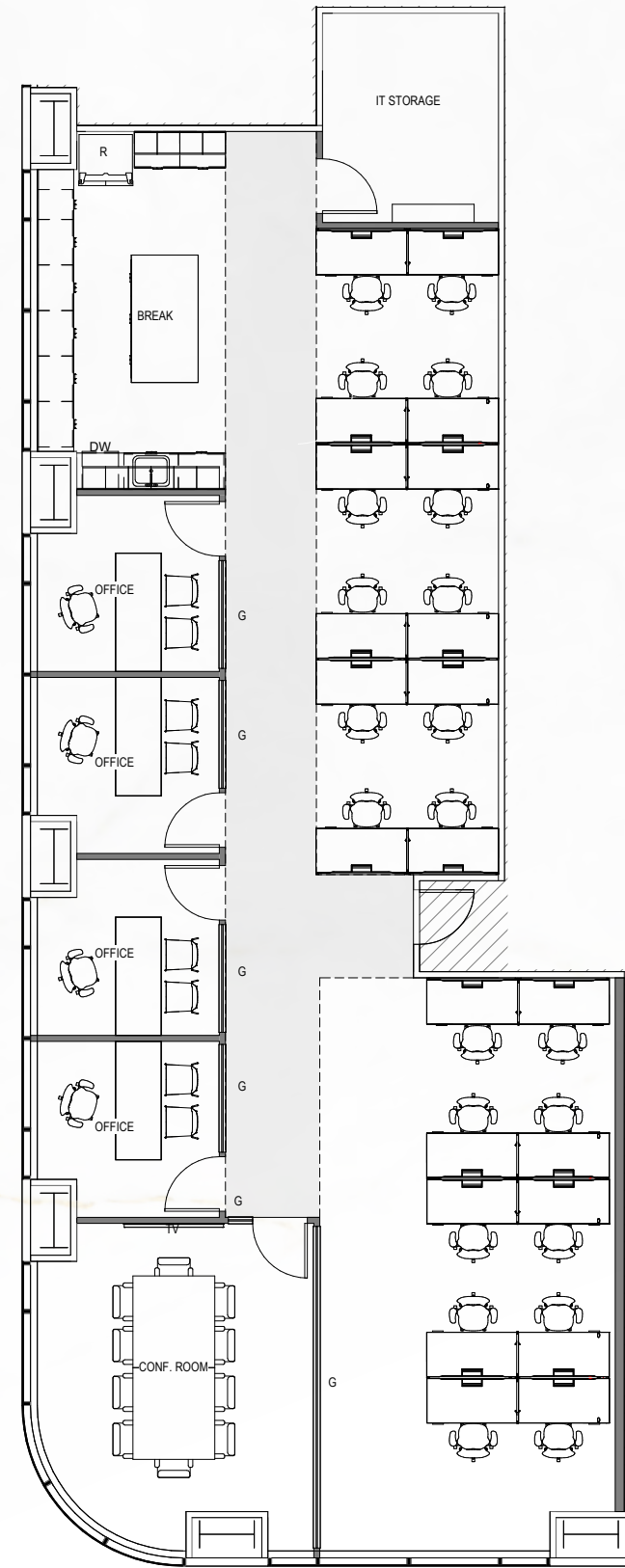
3,015 SF

Available Now

Spec Suite Underway (Open Plan with Kitchen)

Private Offices/Meetings Rooms Can Be Turnkeyed

[VIEW FULL AVAILABILITIES](#)



**MIKE BROWN**  
415.274.4423  
mike.brown@nmrk.com

**ROMAN ADLER**  
415.274.4434  
roman.adler@nmrk.com

**AARON GILLESPIE**  
415.445.5153  
aaron.gillespie@nmrk.com

# 15<sup>th</sup> Floor | Suite 1500

[VIEW FULL AVAILABILITIES](#)

9,700 SF

Available Now

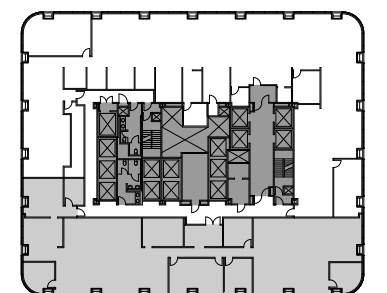
Shell Condition



**MIKE BROWN**  
415.274.4423  
mike.brown@nmrk.com

**ROMAN ADLER**  
415.274.4434  
roman.adler@nmrk.com

**AARON GILLESPIE**  
415.445.5153  
aaron.gillespie@nmrk.com



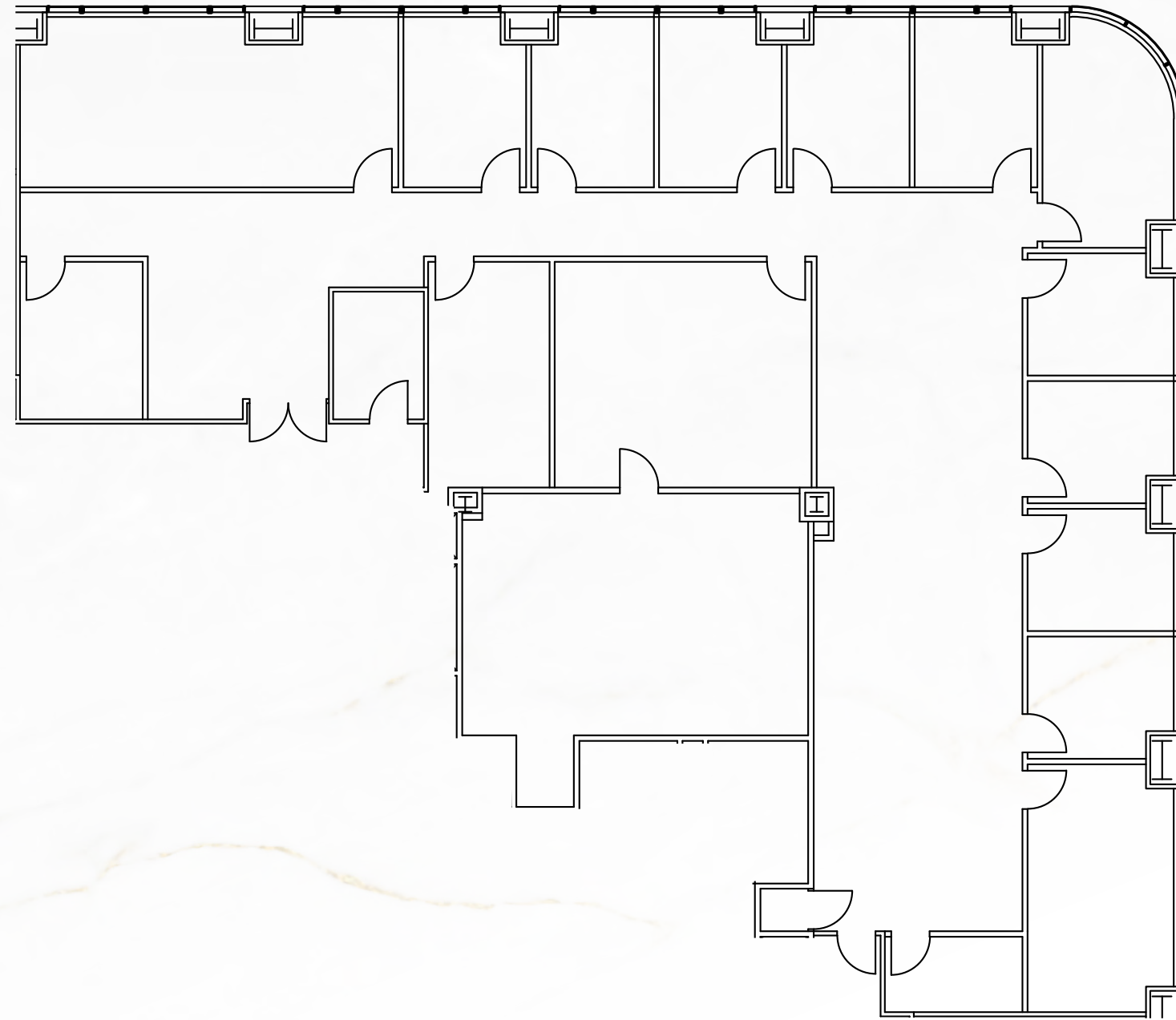
SUTTER ST.

SANSOME ST.

# 18<sup>th</sup> Floor | Suite 1800

[VIEW FULL AVAILABILITIES](#)

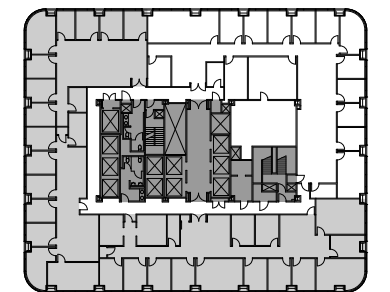
5,701 SF  
Available Now  
10 Offices  
3 Conference Rooms  
Kitchen  
Reception



**MIKE BROWN**  
415.274.4423  
mike.brown@nmrk.com

**ROMAN ADLER**  
415.274.4434  
roman.adler@nmrk.com

**AARON GILLESPIE**  
415.445.5153  
aaron.gillespie@nmrk.com



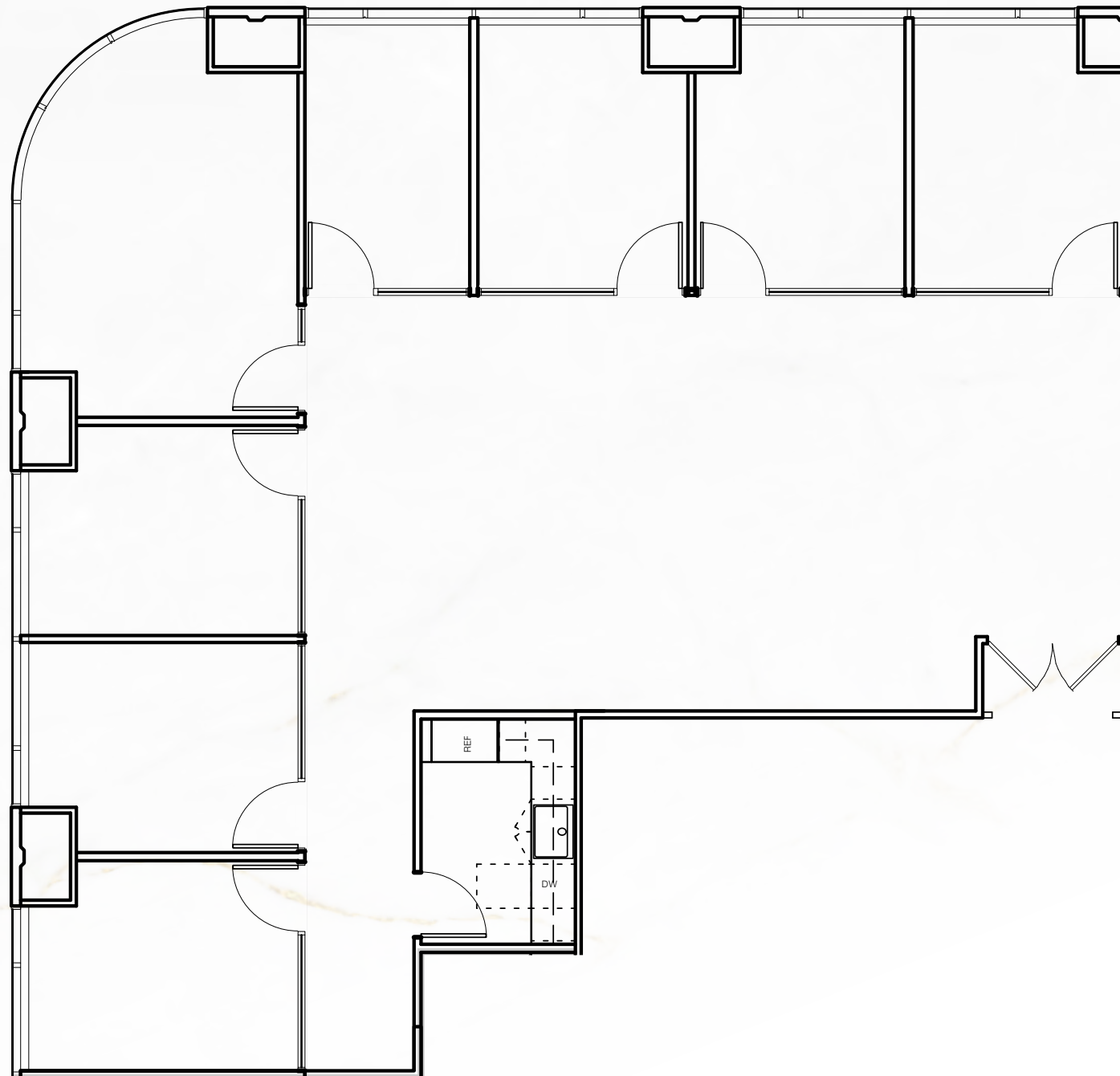
SUTTER ST.

SANSOME ST.

# 18<sup>th</sup> Floor | Suite 1810

[VIEW FULL AVAILABILITIES](#)

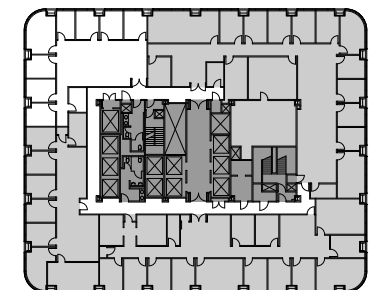
3,009 SF  
Available Now  
7 Offices  
1 Conference Room  
Kitchen  
Open Area



**MIKE BROWN**  
415.274.4423  
mike.brown@nmrk.com

**ROMAN ADLER**  
415.274.4434  
roman.adler@nmrk.com

**AARON GILLESPIE**  
415.445.5153  
aaron.gillespie@nmrk.com



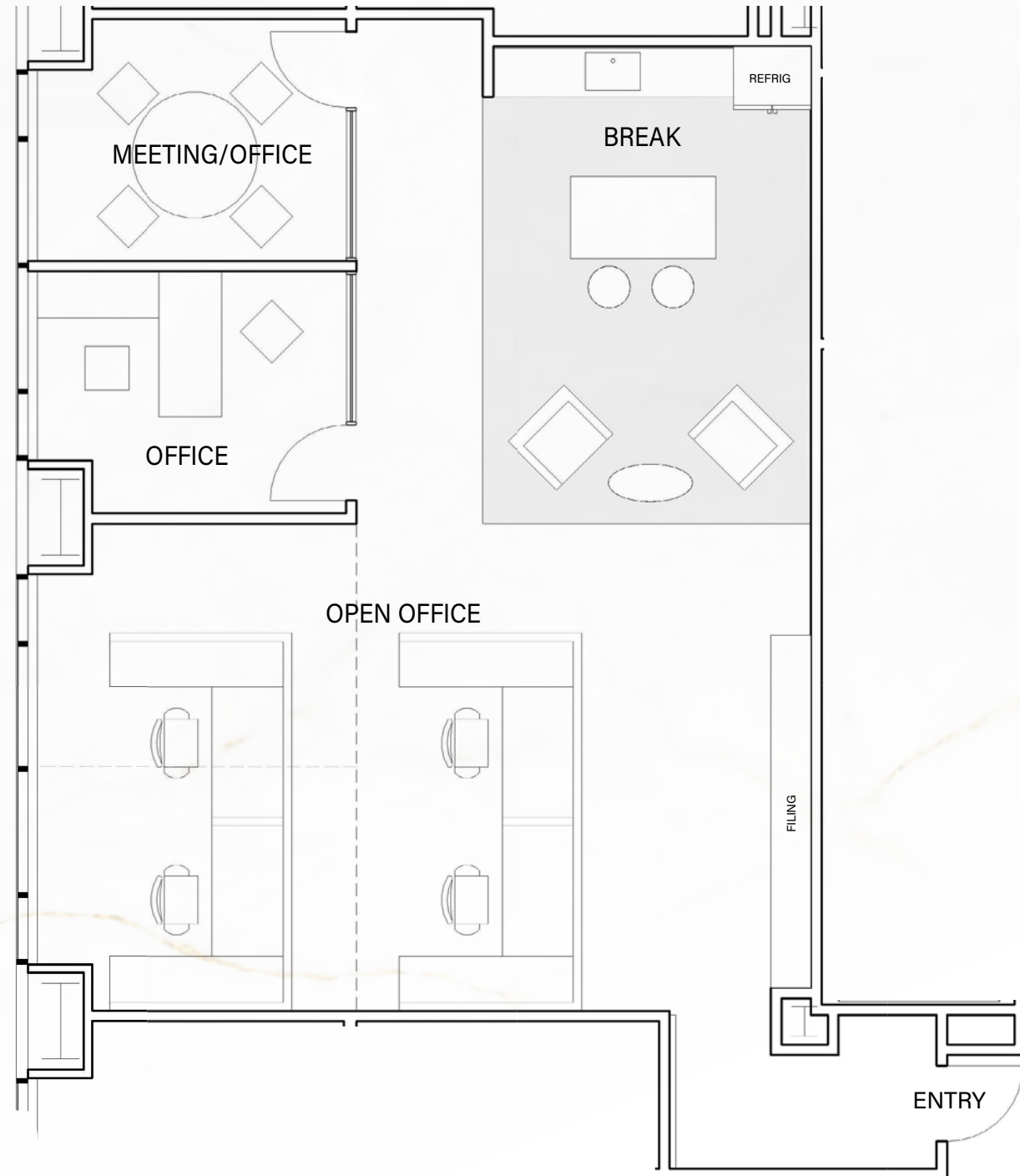
SUTTER ST.

SANSOME ST.

# 20<sup>th</sup> Floor | Suite 2070

[VIEW FULL AVAILABILITIES](#)

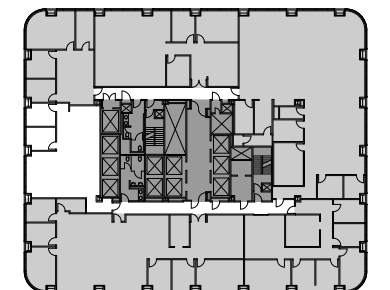
1,654 SF  
Available Now  
2 Offices/Meetings rooms  
Kitchen  
Open Area



**MIKE BROWN**  
415.274.4423  
mike.brown@nmrk.com

**ROMAN ADLER**  
415.274.4434  
roman.adler@nmrk.com

**AARON GILLESPIE**  
415.445.5153  
aaron.gillespie@nmrk.com



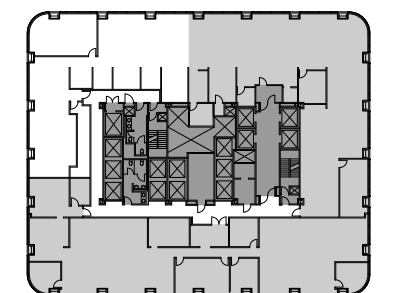
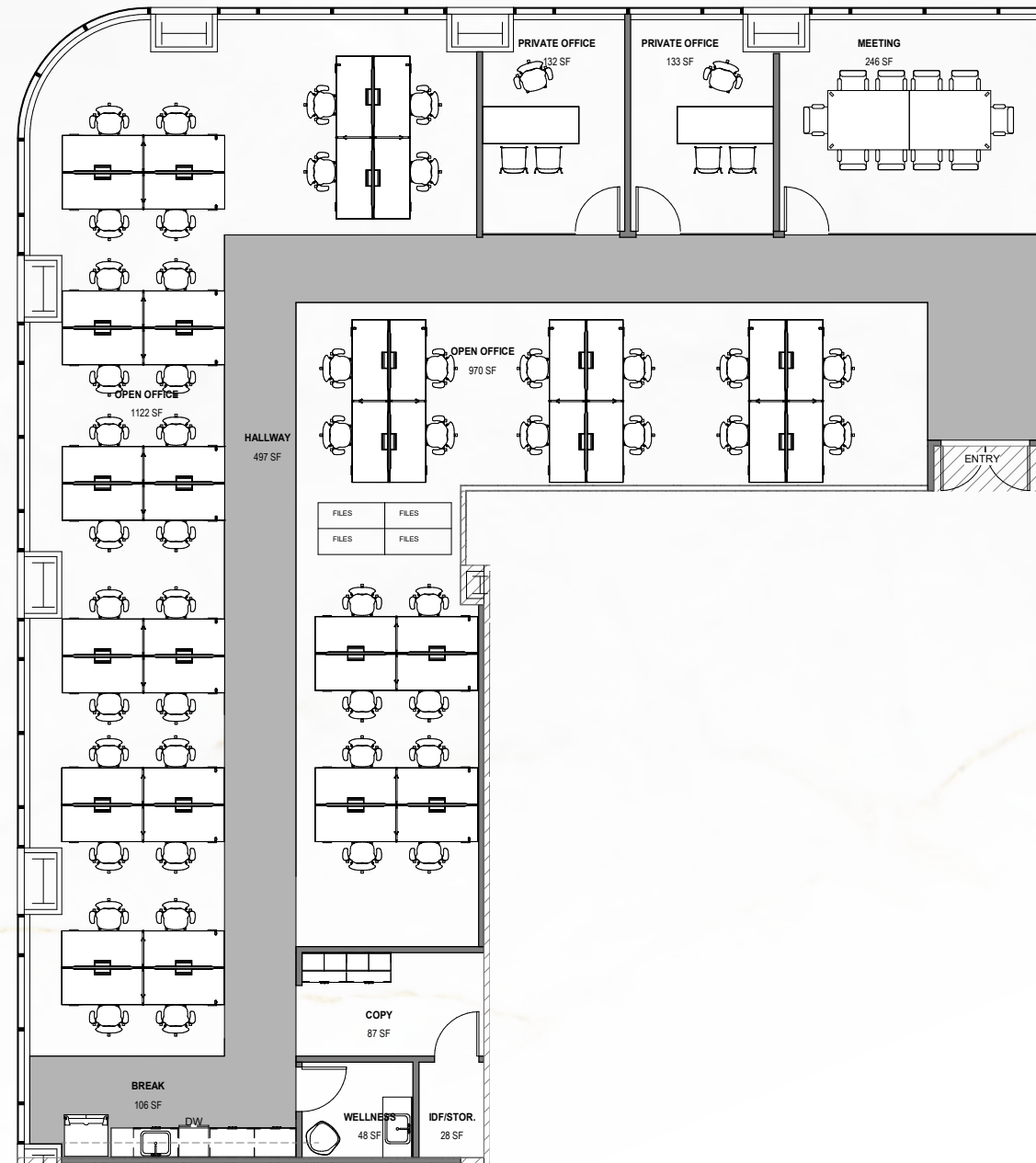
SUTTER ST.

SANSOME ST.

# 22<sup>nd</sup> Floor | Suite 2270

[VIEW FULL AVAILABILITIES](#)

- 4,899 SF
- Available Now
- Brand New Spec Suite
- 2 Offices
- 1 Conference Room
- Kitchen
- Open Area
- Room for Additional Enclosures



**MIKE BROWN**  
415.274.4423  
mike.brown@nrmk.com

**ROMAN ADLER**  
415.274.4434  
roman.adler@nrmk.com

**AARON GILLESPIE**  
415.445.5153  
aaron.gillespie@nrmk.com

# Connected to Convenience

## ● Food / Restaurants

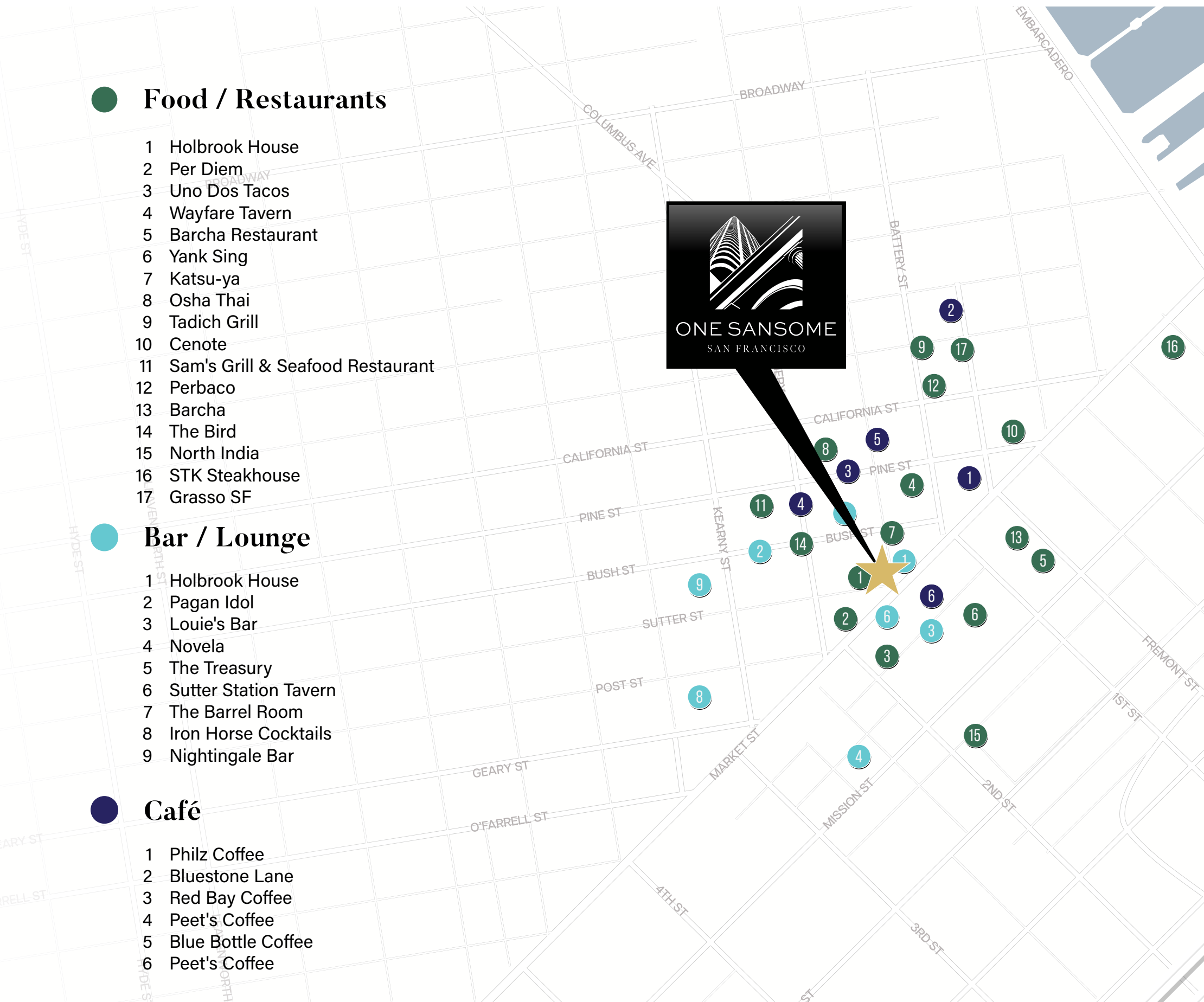
- 1 Holbrook House
- 2 Per Diem
- 3 Uno Dos Tacos
- 4 Wayfare Tavern
- 5 Barcha Restaurant
- 6 Yank Sing
- 7 Katsu-ya
- 8 Osha Thai
- 9 Tadich Grill
- 10 Cenote
- 11 Sam's Grill & Seafood Restaurant
- 12 Perbaco
- 13 Barcha
- 14 The Bird
- 15 North India
- 16 STK Steakhouse
- 17 Grasso SF

## ● Bar / Lounge

- 1 Holbrook House
- 2 Pagan Idol
- 3 Louie's Bar
- 4 Novela
- 5 The Treasury
- 6 Sutter Station Tavern
- 7 The Barrel Room
- 8 Iron Horse Cocktails
- 9 Nightingale Bar

## ● Café

- 1 Philz Coffee
- 2 Bluestone Lane
- 3 Red Bay Coffee
- 4 Peet's Coffee
- 5 Blue Bottle Coffee
- 6 Peet's Coffee









# ONE SANSONME

## SAN FRANCISCO

### MIKE BROWN

Vice Chairman  
415.274.4423  
mike.brown@nmrk.com  
CA RE LIC. #01200178

### ROMAN ADLER

Exec. Managing Director  
415.274.4434  
roman.adler@nmrk.com  
CA RE LIC. #01520766

### AARON GILLESPIE

Sr. Managing Director  
415.445.5153  
aaron.gillespie@nmrk.com  
CA RE LIC. #01971974

BARKER

PACIFIC

GROUP



PGIM

NEWMARK

Barker Pacific Group, Inc. (BPG) is a firm of experienced real estate professionals active in the acquisition, development, and construction management and asset management of major commercial projects. Founded in 1983, the company specializes in the development and acquisition of institutional-quality office, industrial, and residential projects in select U.S. cities. As a developer, BPG has completed, developed or redeveloped in excess of \$3.5 billion in commercial projects. The company enjoys close relationships with major corporate and institutional partners who commend the Barker Pacific Group management team's commitment to excellence, entrepreneurial vision, business acumen, and personal integrity.

PGIM Real Estate has consistently been the largest manager of worldwide institutional assets according to Pensions & Investments, an industry publication.

One Sansome Street, Floor 41, San Francisco, CA 94104 | The distributor of this communication is performing acts for which a real estate license is required. The information contained herein has been obtained from sources deemed reliable but has not been verified and no guarantee, warranty or representation, either express or implied, is made with respect to such information. Terms of sale or lease and availability are subject to change or withdrawal without notice. 7896038599 • 02/26