

441 INDUSTRIAL DRIVE NORTH WALES, PA 19454

AVAILABLE
FOR LEASE



12,000 SF INDUSTRIAL BUILDING PROPERTY SPECIFICATIONS

MARK PAWLOWSKI

MPAWLOWSKI@FLYNNCO.COM

215-561-6565 X 118

MICHAEL BORSKI JR, SIOR

MBORSKIJR@FLYNNCO.COM

215-561-6565 X 119

ANDREW D. PANCOAST

APANCOAST@FLYNNCO.COM

215-561-6565 X 125

The
Flynn
Company

APN / PARCEL NO.	56-00-04055-506
TOTAL PROPERTY SIZE	1.91 acres
TOTAL SQUARE FOOTAGE	12,000 SF
AVAILABLE PARKING	25 parking spaces onsite
FEATURES	2 loading docks/ 8'x8
ZONING	Zoned Light Industrial in Upper Gwynedd Township
UTILITIES	Public water and sewer Serviced by electric and natural gas
CLEAR HEIGHTS	Generally 13'

THE FLYNN COMPANY

WWW.FLYNNCO.COM | 1621 WOOD STREET, PHILADELPHIA, PA 19103 | 215.561.6565

441 INDUSTRIAL DRIVE

12,000 SF INDUSTRIAL BUILDING FOR LEASE

LOCATION



THE FLYNN COMPANY

WWW.FLYNNCO.COM | 1621 WOOD STREET, PHILADELPHIA, PA 19103 | 215.561.6565

PROPERTY PHOTOS



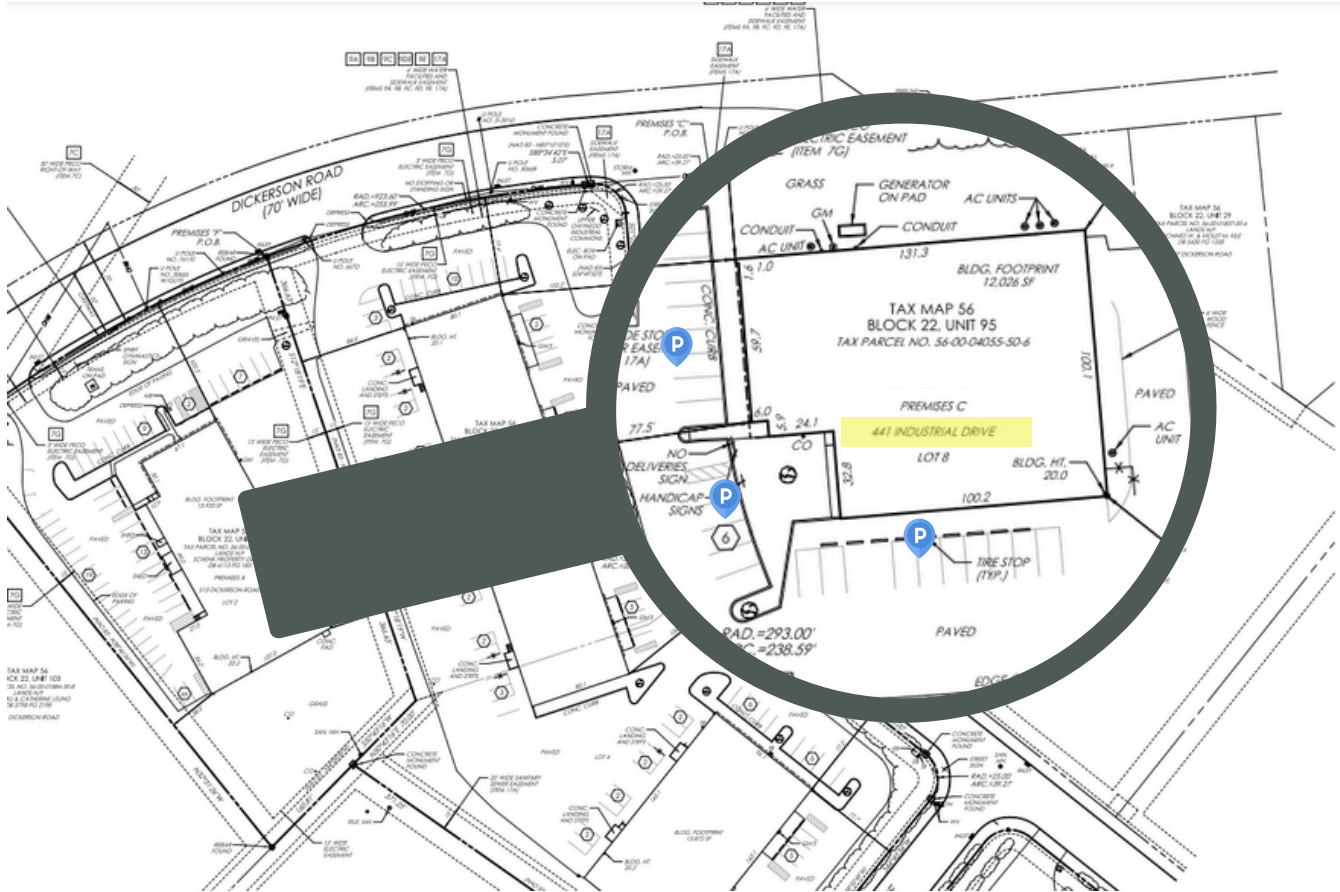
**FOR MORE
INFORMATION**

MARK PAWLOWSKI
MPAWLOWSKI@FLYNNCO.COM
215-561-6565 X 118

MICHAEL BORSKI JR, SIOR
MBORSKIJR@FLYNNCO.COM
215-561-6565 X 119

ANDREW D. PANCOAST
APANCOAST@FLYNNCO.COM
215-561-6565 X 125

SITE PLAN



P 2 PER 1,000 PARKING RATIO

**FOR MORE
INFORMATION**

MARK PAWLOWSKI
MPAWLOWSKI@FLYNNCO.COM
215-561-6565 X 118

MICHAEL BORSKI JR, SIOR
MBORSKIJR@FLYNNCO.COM
215-561-6565 X 119

ANDREW D. PANCOAST
APANCOAST@FLYNNCO.COM
215-561-6565 X 125



MARK PAWLOWSKI

MPAWLOWSKI@FLYNNCO.COM

215-561-6565 X 118

MICHAEL BORSKI, SIOR

MBORSKIJR@FLYNNCO.COM

215-561-6565 X 119

ANDREW D. PANCOAST

APANCOAST@FLYNNCO.COM

215-561-6565 X 125

THE FLYNN COMPANY

LEASING & INVESTMENT | PROPERTY MANAGEMENT | CONSTRUCTION SERVICES | PROPERTY MAINTENANCE

WWW.FLYNNCO.COM | 1621 WOOD STREET, PHILADELPHIA, PA 19103 | 215.561.6565