

FORMER PARTY CITY

292 BOSTON POST ROAD, ORANGE, CT



FOR LEASE: 3,361 SF - 4,433 SF

High visibility end-cap with excellent frontage on one of Connecticut's dominant retail corridors! Dedicated pylon!



DEMOGRAPHICS	3-MILES	5-MILES	10-MILES
POPULATION	8,150	71,927	187,622
NUMBER OF HH	3,133	27,254	71,294
AVG. HH INCOME	\$73,995	\$95,257	\$95,890

AREA RETAILERS:



AND MANY MORE!

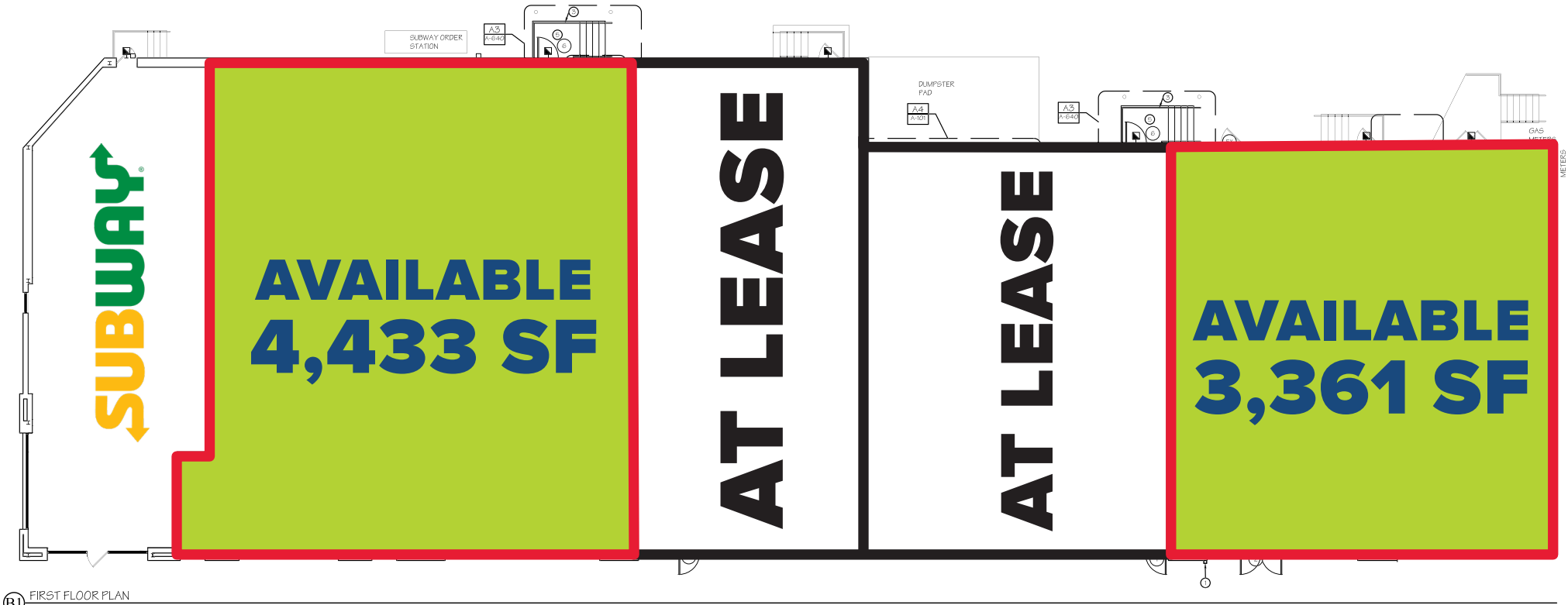
TYLER LYMAN
203.529.4639
tl@truecre.com

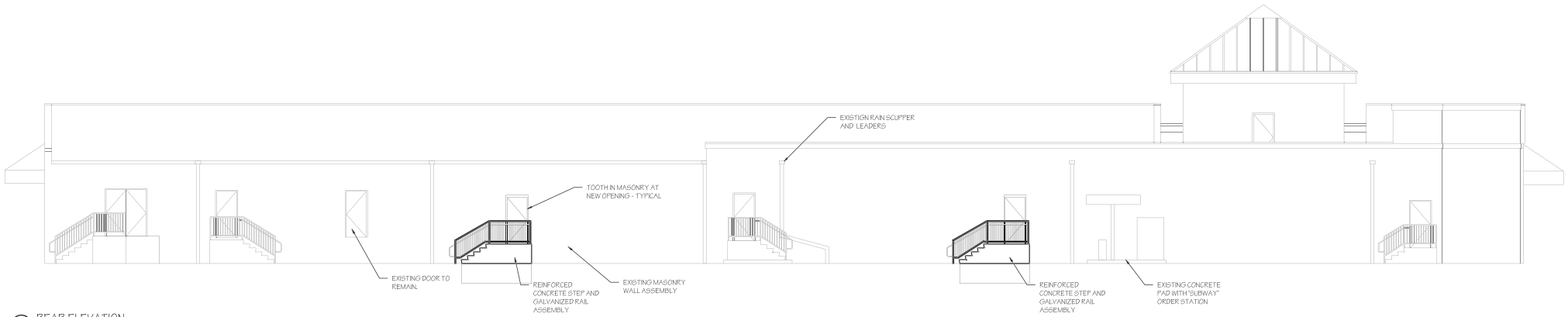
WES CRAFT
203.522.7484
wc@truecre.com

2228 Black Rock Turnpike, Suite 206, Fairfield, CT 06825
203.744.7777
www.truecre.com

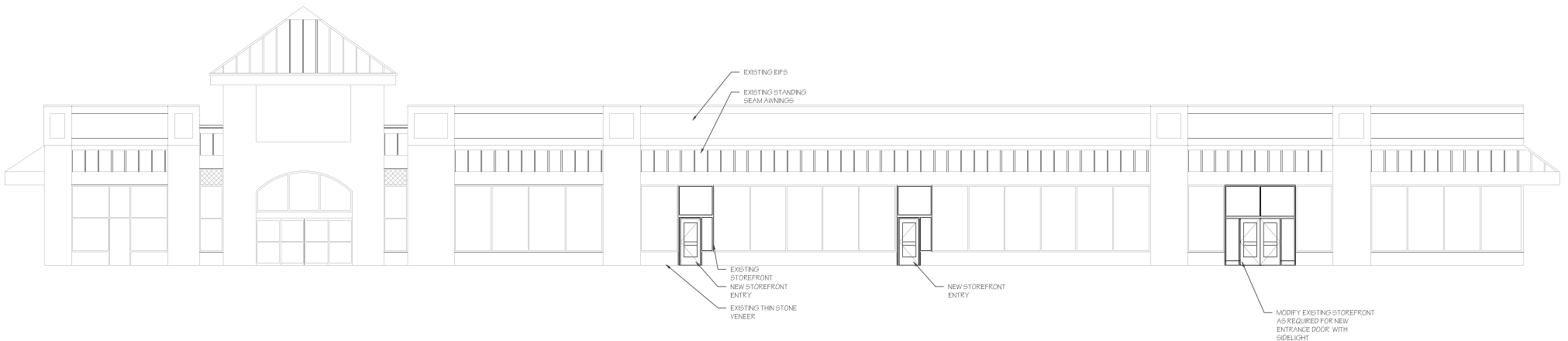
This information provided in this marketing package has been obtained from sources believed reliable, but has not been verified for accuracy or completeness. You should conduct a careful, independent investigation of the property and verify all information. Any reliance on this information is solely at your own risk.

POTENTIAL SUBDIVISION PLAN





C1 REAR ELEVATION
SCALE: 1/8" = 1'-0"



B1 FRONT ELEVATION
SCALE: 1/8" = 1'-0"



ORANGE PLAZA



MILFORD MARKETPLACE



TURNPIKE SQUARE



BOSTON POST RD 25,000 VPD



MILFORD PLAZA



MILFORD CROSSING



CONNECTICUT POST MALL

