

FOR LEASE

# PINE RIDGE PARK

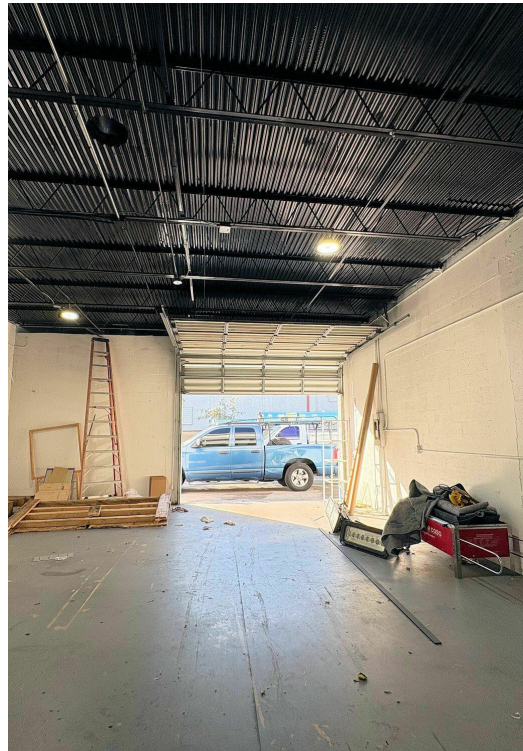
1051 - 1090 NW 53RD STREET, FORT LAUDERDALE, FL 33309

1068 NW 53RD STREET



## SPACE HIGHLIGHTS

- 1,706 SF
- 192 SF air-conditioned office
- 10' x 10' front grade level overhead door
- 12' x 10' rear grade level overhead door
- 12' clear ceiling in warehouse
- Utility sink
- Private restroom
- Dedicated reserved parking spaces



## HALEY PRESSER

Property Manager / Sales Associate  
Direct: 954.485.9200 | Cell: 954.254.5396  
Haley@levyrai.com

## ANGIE WEAVER

Lauderdale Lakes and Lauderdale Manager  
Direct: 954.485.9200 | Cell: 917.645.2339  
angie@levyrai.com

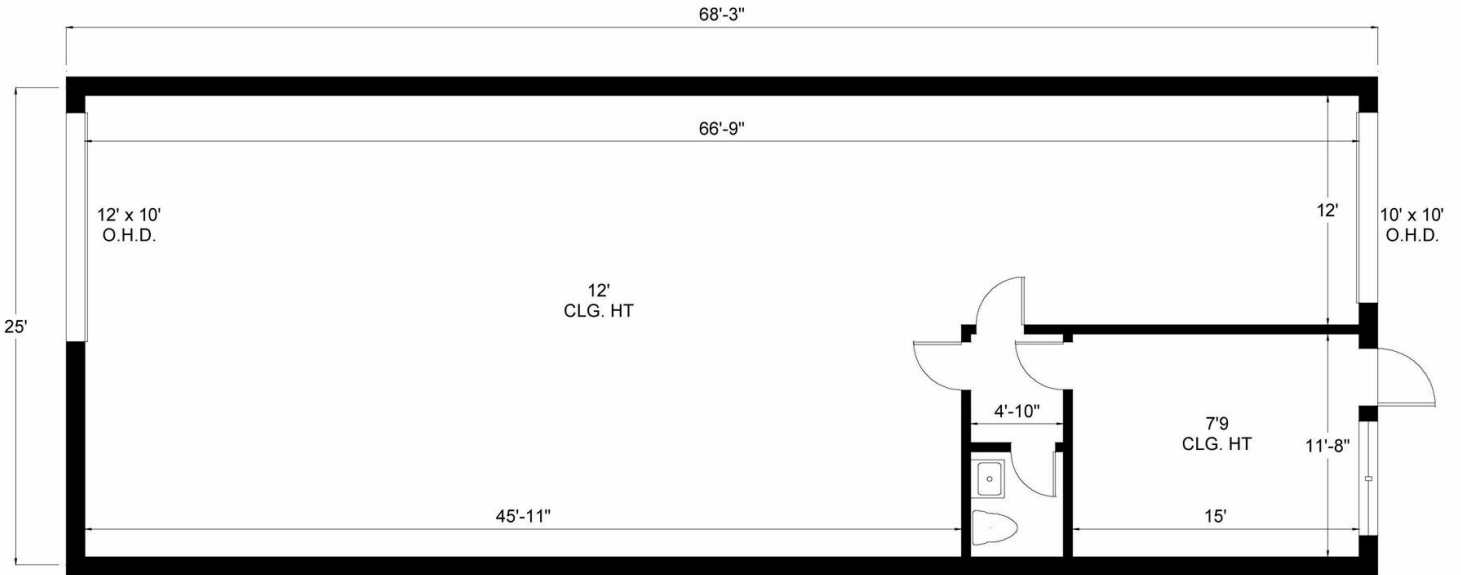


# PINE RIDGE PARK

1051 - 1090 NW 53RD STREET, FORT LAUDERDALE, FL 33309

## 1068 NW 53RD STREET FLOOR PLAN

1068 NW 53RD STREET | FORT LAUDERDALE, FL 33309



OFFICE 192 SF  
WAREHOUSE 1,514 SF

1,706 Rentable Sq. Ft.  
[www.LevyRealtyAdvisors.com](http://www.LevyRealtyAdvisors.com)

### HALEY PRESSER

Property Manager / Sales Associate  
Direct: 954.485.9200 | Cell: 954.254.5396  
Haley@levyrai.com

### ANGIE WEAVER

Lauderdale Lakes and Lauderdale Manager  
Direct: 954.485.9200 | Cell: 917.645.2339  
angie@levyrai.com

