

KNIGHTSBRIDGE RETAIL UNIT TO LET

4-5 Beauchamp Place

London, SW3



Savills London

33 Margaret
Street London
W1G 0JD

savills.co.uk



Location

The premises are situated on the eastern side of Beauchamp Place, a street in Knightsbridge famous for its boutiques and small restaurants.

The unit is located close to the junction with Brompton Road, close to **Harrods**. Nearby occupiers include **Lalage Beaumont Carlone Charles, Patara Thai, The Beauchamp, Maroush** and **Mila by Jaks**.

Accommodation

The retail unit is arranged over ground and basement providing the following approximate areas:

Ground Floor:	1,282 sq ft	119.1 sq m
Basement:	712 sq ft	66.1 sq m
Total:	1,994 sq ft	185.2 sq m



Viewing & further information

Strictly by prior arrangement only with:

Daniel Aboud

DAboud@savills.com
+44 (0) 7972 000 240

Beth Ritchie

Beth.Ritchie@savills.com
+44 (0) 7779 402 633

Or via our joint agent:

Oliver Dodd

Oliver@ovingtonproperty.com
+44 (0) 7789 278 915



Rent

£165,000 per annum exclusive.

Tenure

The premises are available on a new lease for a term to be agreed contracted outside of the security of tenure provisions of the Landlord and Tenant Act 1954 (Part II) as amended .



Rates

We have been verbally advised by the local rating authority:

Rateable Value (2023) £115,000

Rates Payable (2025/26): £66,125

Parties are advised to make their own enquiries to verify upcoming rates payable and whether rates relief may apply.



Use

The premises currently benefits from Class E use which includes various commercial uses including Retail, Restaurant, Office or Gym space without the need for change of use.



Legal Costs

Each party to be responsible for their own legal and professional costs incurred in this transaction.

EPC

A valid EPC for this property can be made available upon request.



INTERNAL IMAGERY

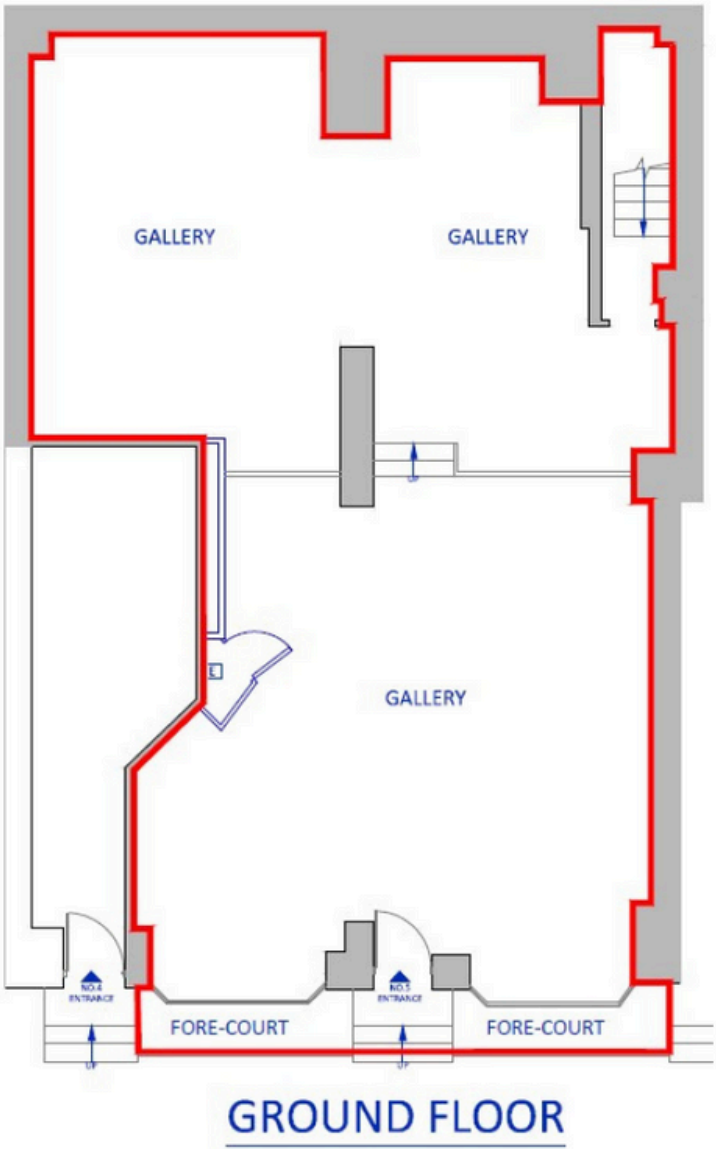
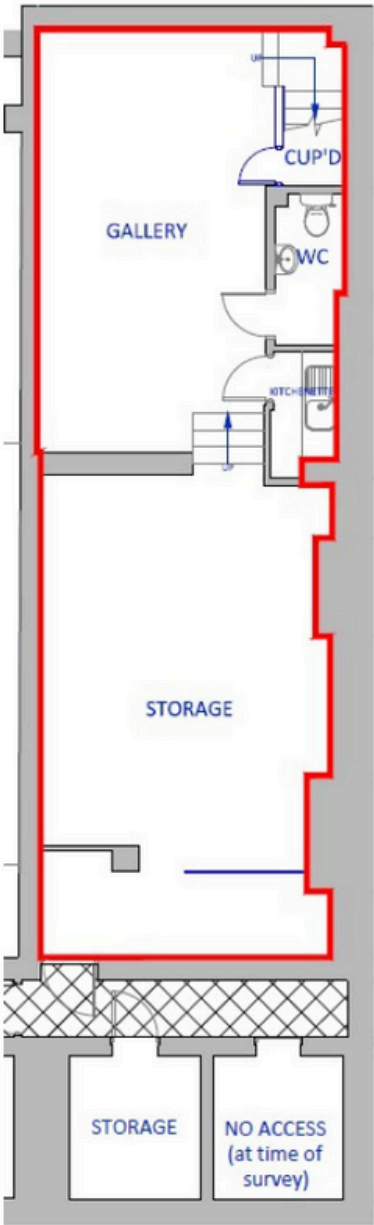
IMPORTANT NOTICE


Savills, their clients and any joint agents give notice that:
1. They are not authorised to make or give any representations or warranties in relation to the property either here or elsewhere, either on their own behalf or on behalf of their client or otherwise. They assume no responsibility for any statement that may be made in these particulars. These particulars do not form part of any offer or contract and must not be relied upon as statements or representations of fact.
2. Any areas, measurements or distances are approximate. The text, images and plans are for guidance only and are not necessarily comprehensive. It should not be assumed that the property has all necessary planning, building regulation or other consents and Savills have not tested any services, equipment or facilities. Purchasers must satisfy themselves by inspection or otherwise.

Maps are reproduced from the Ordnance Survey Map with the permission of the Controller of H.M. Stationery Office. © Crown copyright licence number 100022432 Savills (UK) Ltd, and published for the purposes of identification only and although believed to be correct accuracy is not guaranteed. Designed and produced by Savills Marketing: 020 7499 8644 | SEPT 2025



Floor Plans





We connect the dots
between landlords,
brands and powerful
consumer insights

[Find out more here](#)

Savills London

33 Margaret
Street London
W1G 0JD

savills.co.uk



savills