

COMMERCIAL LEASE OPPORTUNITY

RIGHT SPACE | RIGHT PLACE



Empire Towers I

3633 Inland Empire Blvd., Ontario, CA 91764

PRESENTED BY

Michael G. Rademaker

Founder/CEO

909-579-1340

mrademaker@mgrservices.com

DRE Lic #00556679

Lynn Yangchana, CCIM

Vice President

909-579-1399

lynn@mgrrealestate.com

DRE Lic #01518762

MGR
Real Estate

Features:

- +/- 188,612 SF, 9-Story, Class A Office Building
- Premiere Ontario Airport Submarket Location
- Prominent I-10 Freeway Visibility
- Built in 1991; Zoning: SP, City of Ontario
- Immediate Access to I-10, at Haven Avenue
- Close Proximity to I-15 and 60 Freeways
- 4/1,000 Parking; Reserved Parking Available
- Card Key Security System; Full Service Gross Leases
- Professionally Managed and Maintained

Commercial | Residential | Property Management

ONTARIO 909-981-4466

VICTORVILLE 760-955-7888

CARLSBAD 760-683-8102

www.mgrrealestate.com

BRE ID# 01841921

All items on this page are deemed to be accurate, but should be viewed as reference only. MGR Real Estate, Inc. does not warranty/guaranty the validity of any information on this page.



Empire Towers I - Offices for Lease

3633 Inland Empire Blvd., Ontario, CA 91764

Floor / Suite #	Rentable Sq. Ft.	Description	Status
5 th / 560	2,441	Reception area, conf. room, 4 offices, breakroom, and open area for cubicles	Available
6 th / 660	1,614	Reception area, conf. room, 5 offices, and breakroom	Available 11/01/2026
7 th / 750	4,472	Reception area, large conference room, 4 offices, break room, storage room, IT room and open area for cubicles	Available in 60 days
7 th / 777	2,410	Reception area, conf. room, 5 offices, breakroom, and small open area for workstations	Available
7 th / 790	3,190	Reception area, conf. room, 4 offices, 3 small rooms, and open area for workstations	Available
8 th / 890	2,355	Reception area, conf. room, 3 offices and open area	Available
8 th / 895	4,530	Reception area, 2 conf. rooms, 6 offices, breakroom, IT room, and open area for workstations	Available in 60 days



For more information, contact:

Michael G. Rademaker
 Founder / Broker | Lic. #00556679
Office Direct: 909-579-1340

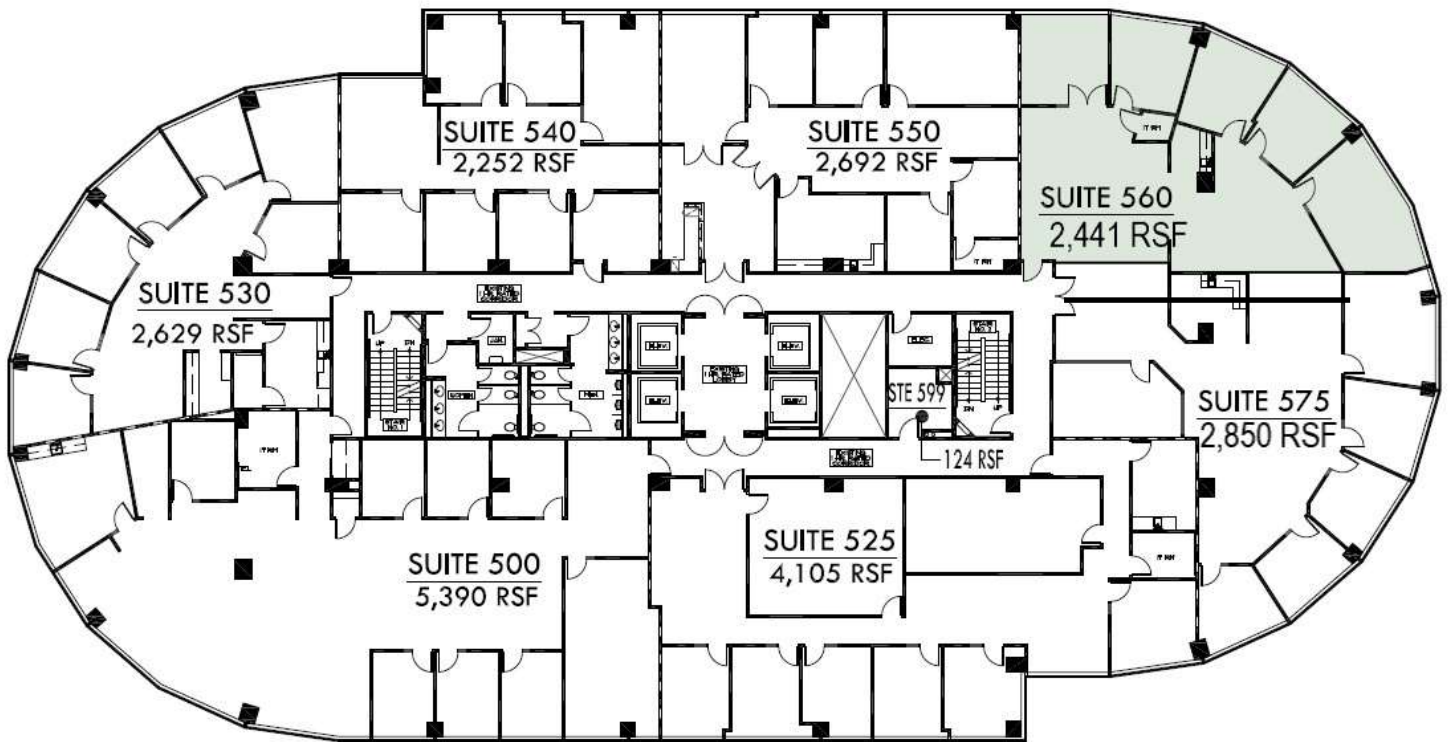
Lynn Yangchana
 Vice President, CCIM | Lic. #01518762
Office Direct: 909-579-1399

*All items on this page are deemed to be correct but should be viewed as reference only. MGR Real Estate, Inc. does not warranty/guaranty the validity of any information on this page.



Empire Towers I
3633 Inland Empire Blvd., Ontario, CA – 5th Floor

Suite 560: 2,441 RSF (Available)



5TH FLOOR PLAN



For more information, contact:

Michael G. Rademaker
Founder / CEO | Lic. #00556679
Office Direct: 909-579-1340

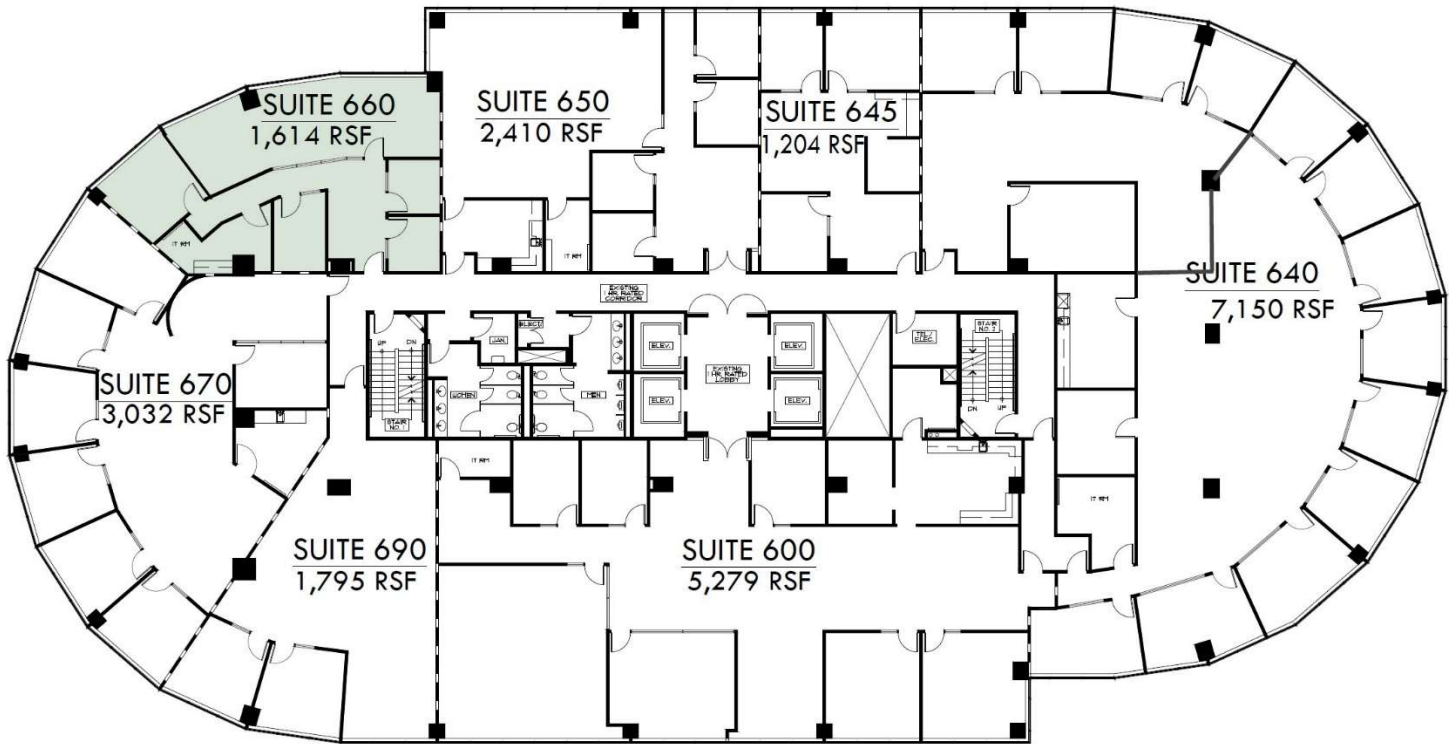
Lynn Yangchana
Vice President, CCIM | Lic. #01518762
Office Direct: 909-579-1399

*All items on this page are deemed to be correct but should be viewed as reference only. MGR Real Estate, Inc. does not warranty/guaranty the validity of any information on this page.



Empire Towers I
3633 Inland Empire Blvd., Ontario, CA – 6th Floor

Suite 660: 1,614 RSF (Available 11/01/2026)



6TH FLOOR PLAN



For more information, contact:

Michael G. Rademaker
Founder / CEO | Lic. #00556679
Office Direct: 909-579-1340

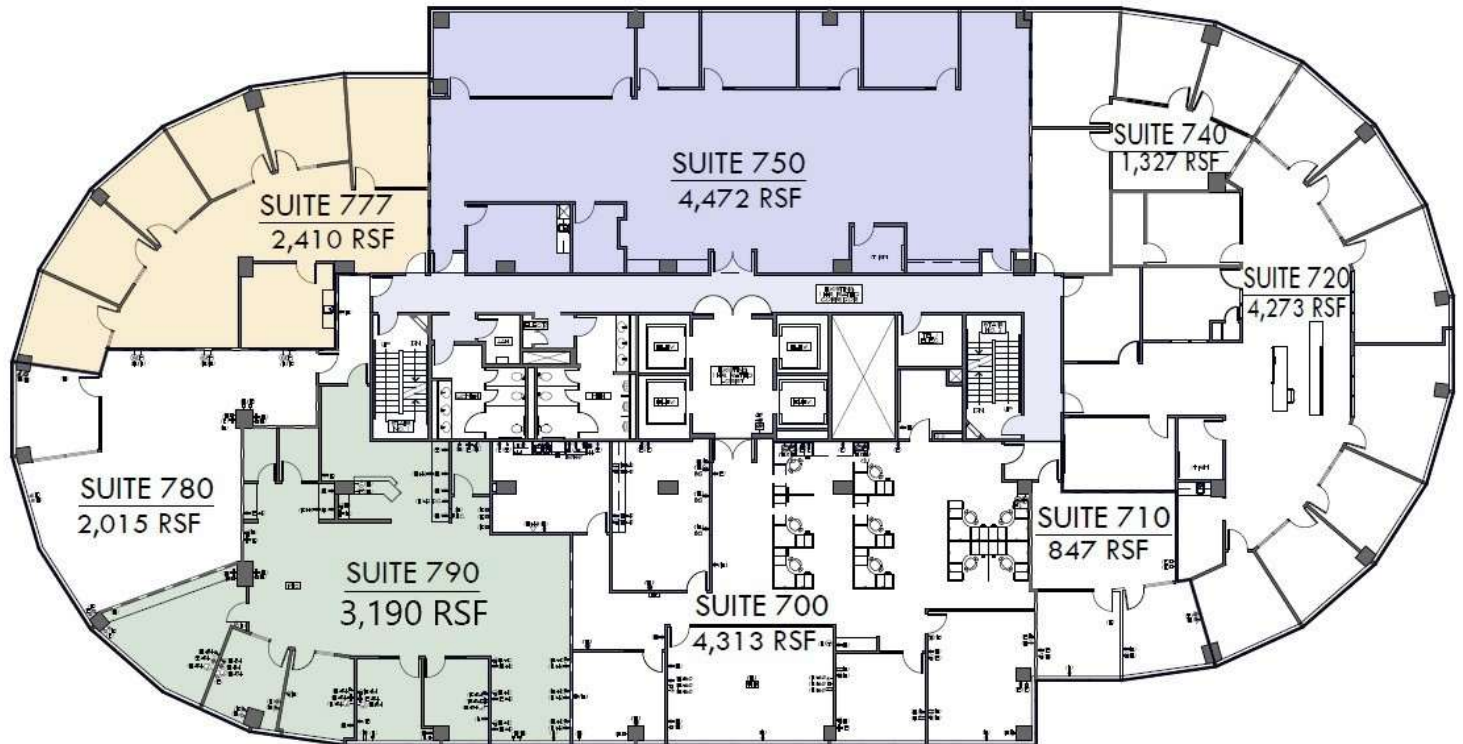
Lynn Yangchana
Vice President, CCIM | Lic. #01518762
Office Direct: 909-579-1399

*All items on this page are deemed to be correct but should be viewed as reference only. MGR Real Estate, Inc. does not warranty/guaranty the validity of any information on this page.



Empire Towers I
3633 Inland Empire Blvd., Ontario, CA – 7th Floor

Suite 750: 4,472 RSF (Available in 60 days)
Suite 777: 2,410 RSF (Available) | **Suite 790:** 3,190 RSF (Available 5/1/2026)



7TH FLOOR PLAN



For more information, contact:

Michael G. Rademaker
Founder / CEO | Lic. #00556679
Office Direct: 909-579-1340

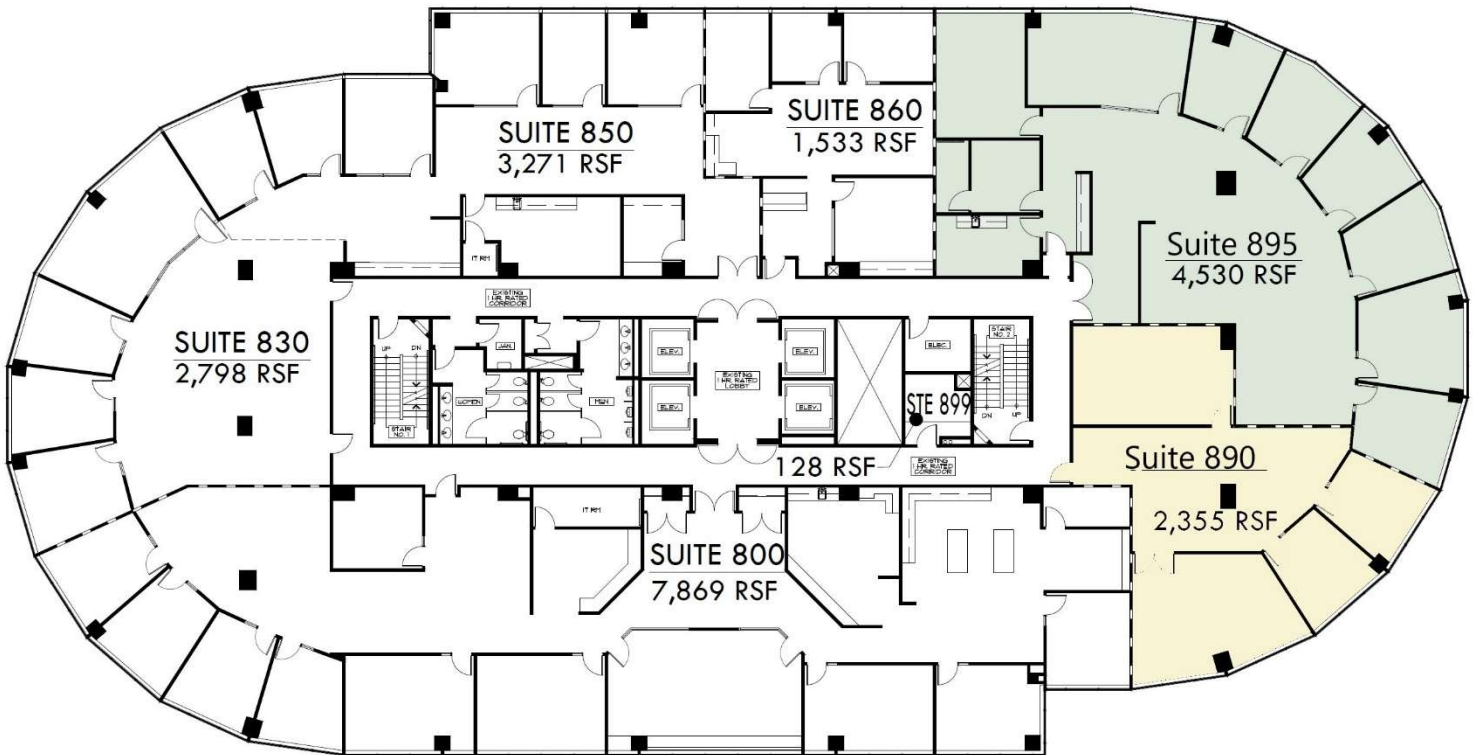
Lynn Yangchana
Vice President, CCIM | Lic. #01518762
Office Direct: 909-579-1399

*All items on this page are deemed to be correct but should be viewed as reference only. MGR Real Estate, Inc. does not warranty/guaranty the validity of any information on this page.



Empire Towers I
3633 Inland Empire Blvd., Ontario, CA – 8th Floor

Suite 890: 2,355 RSF (Available) | Suite 895: 4,530 RSF (Available in 60 days)



8TH FLOOR PLAN



For more information, contact:

Michael G. Rademaker
Founder / CEO | Lic. #00556679
Office Direct: 909-579-1340

Lynn Yangchana
Vice President, CCIM | Lic. #01518762
Office Direct: 909-579-1399

*All items on this page are deemed to be correct but should be viewed as reference only. MGR Real Estate, Inc. does not warranty/guaranty the validity of any information on this page.