

**AVISON
YOUNG**

For Lease

3605 Gilmore Way
Burnaby, BC



The offices at 3605 Gilmore Way offer a high-quality work environment with excellent amenities for staff.

Josh Sookero*, Principal
604 647 5091
josh.sookero@avisonyoung.com
**Personal Real Estate Corporation*

Nicolas Bilodeau, Senior Vice President
604 647 1336
nicolas.bilodeau@avisonyoung.com

3605 Gilmore Way Burnaby, BC

Property details

BUILDING CLASS

A

BUILDING AREA

47,000 sf (approx.)

LEASE RATE

Please contact listing agents

OPERATING COSTS

\$25.13 psf (2026 estimate)

TERM

5 to 10 year terms available

PARKING

2.5 stalls per 1,000 sf
Random underground = \$130
Reserved Surface = \$280

ZONING

CD M8a DPK
Allows for business or professional offices as well as technological research and manufacturing


SECURITY


Proximity card system details description


Location


Located in the heart of Burnaby, 3605 Gilmore Way features a high-quality work environment complete with opening windows, bicycle storage, showers, jogging trails, tenant lounge and a large common meeting room.

Building features

 Large, ground floor common meeting room (1,600 sf) available to tenants

 Barrier-free access throughout the building

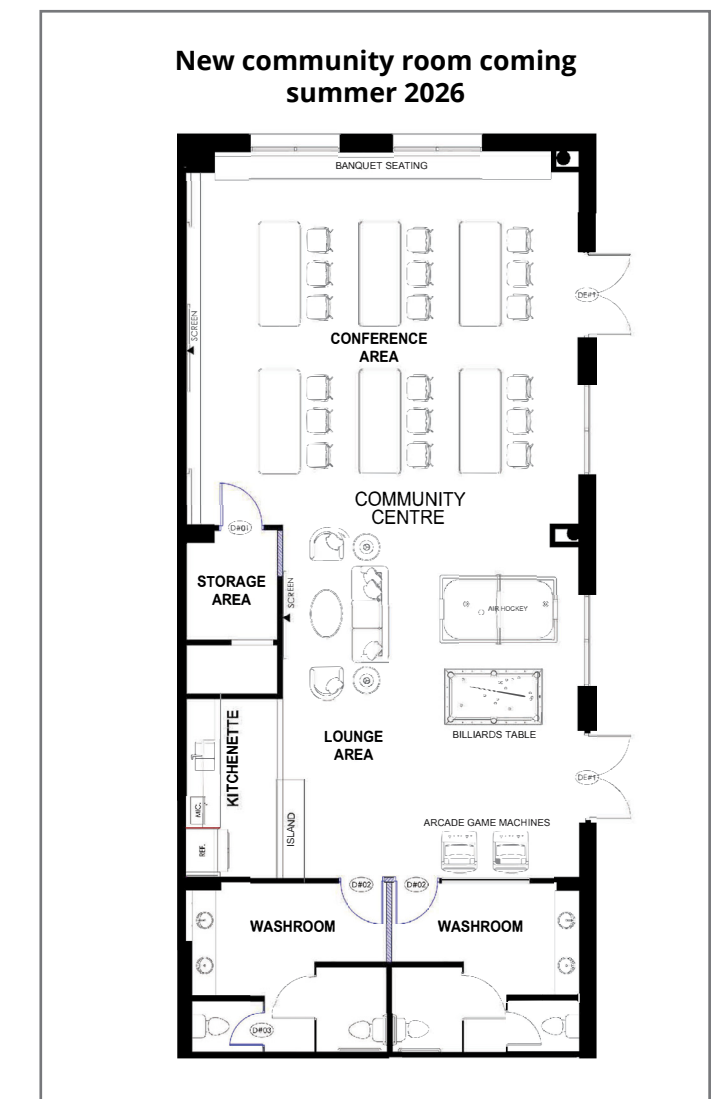
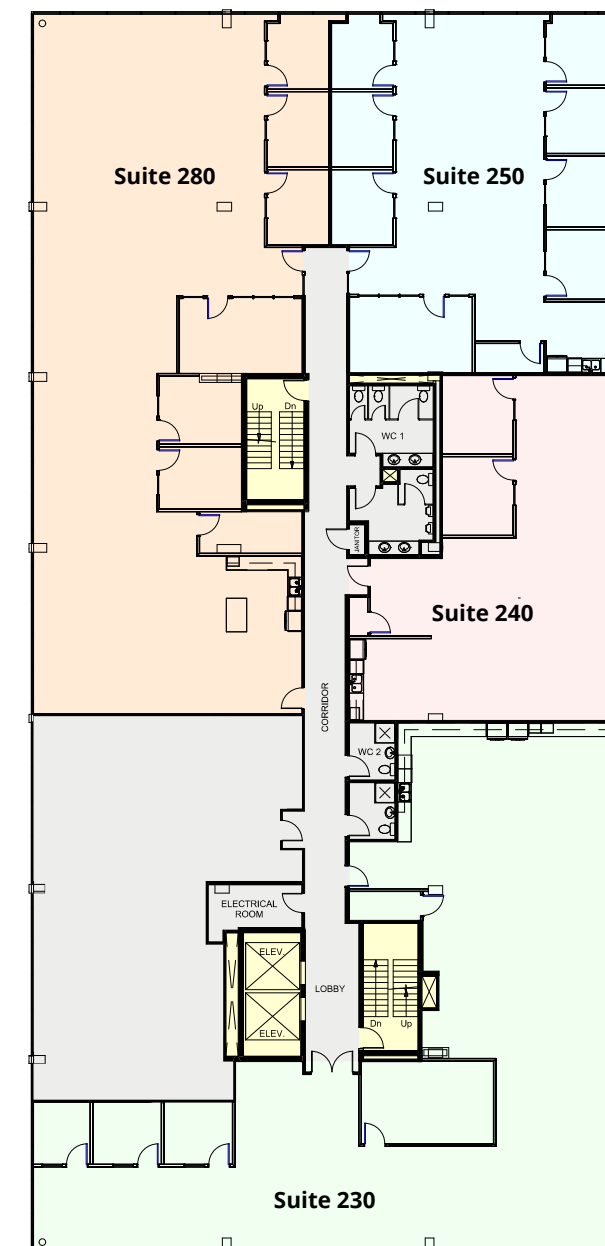
 Secure bike storage, shower and changing facilities

 Adjacent to the Gilmore Way Urban Trail with streams, walking and biking trails



New show suites available now

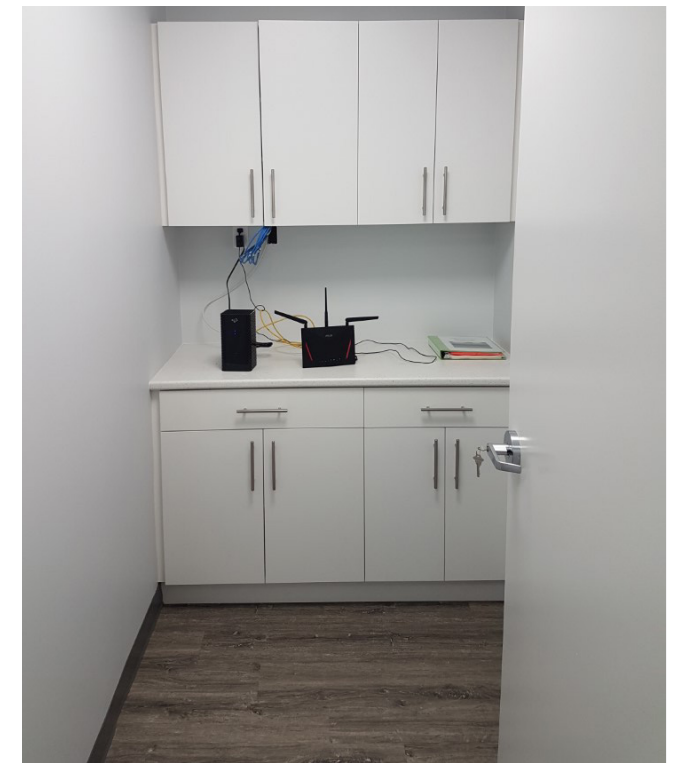
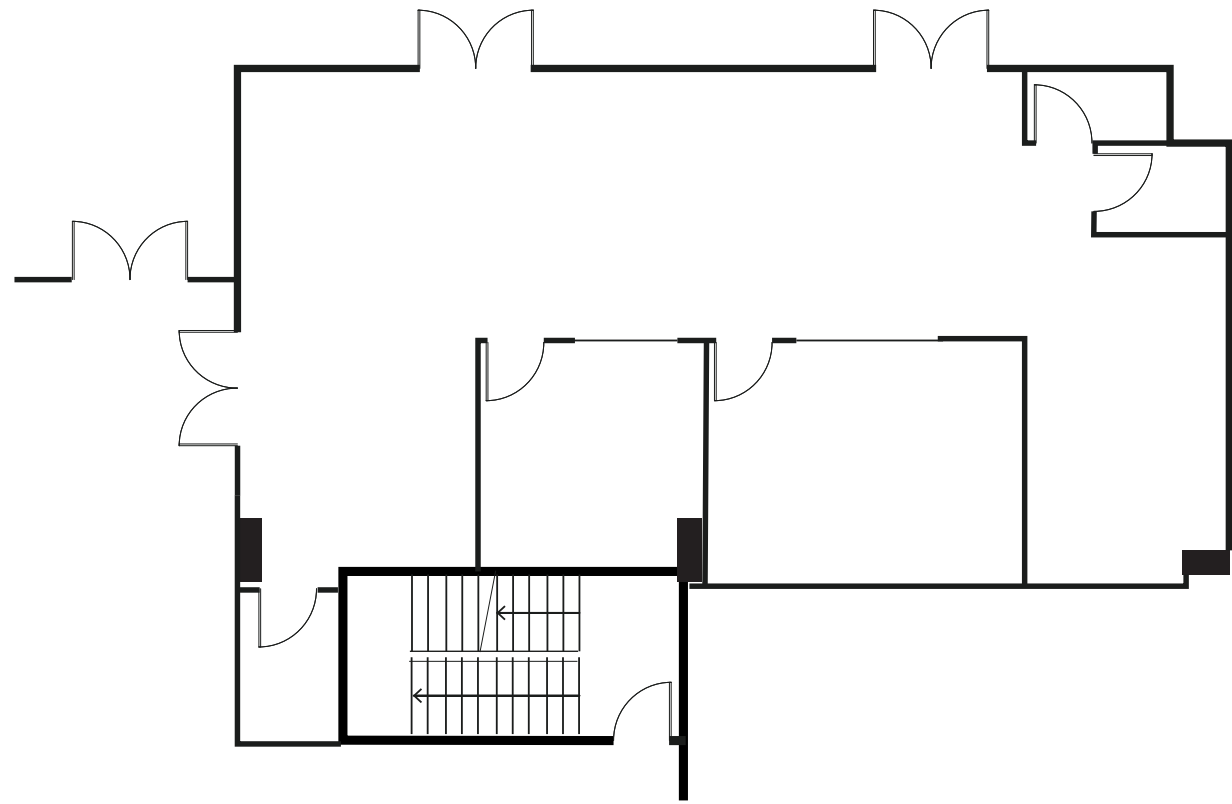
SUITE	SIZE (sf)	DESCRIPTION
230	5,066	Two (2) offices, server room, small meeting room, reception area, boardroom, kitchenette, and open area
240	2,173	Two (2) offices, server room, reception area, kitchenette, and open area
250	2,871	Seven (7) offices, server room, reception area, boardroom, kitchenette, and open area
280	5,171	Five (5) offices, server room, reception area, boardroom, kitchenette, and open area



New cardio and workout room coming summer 2026

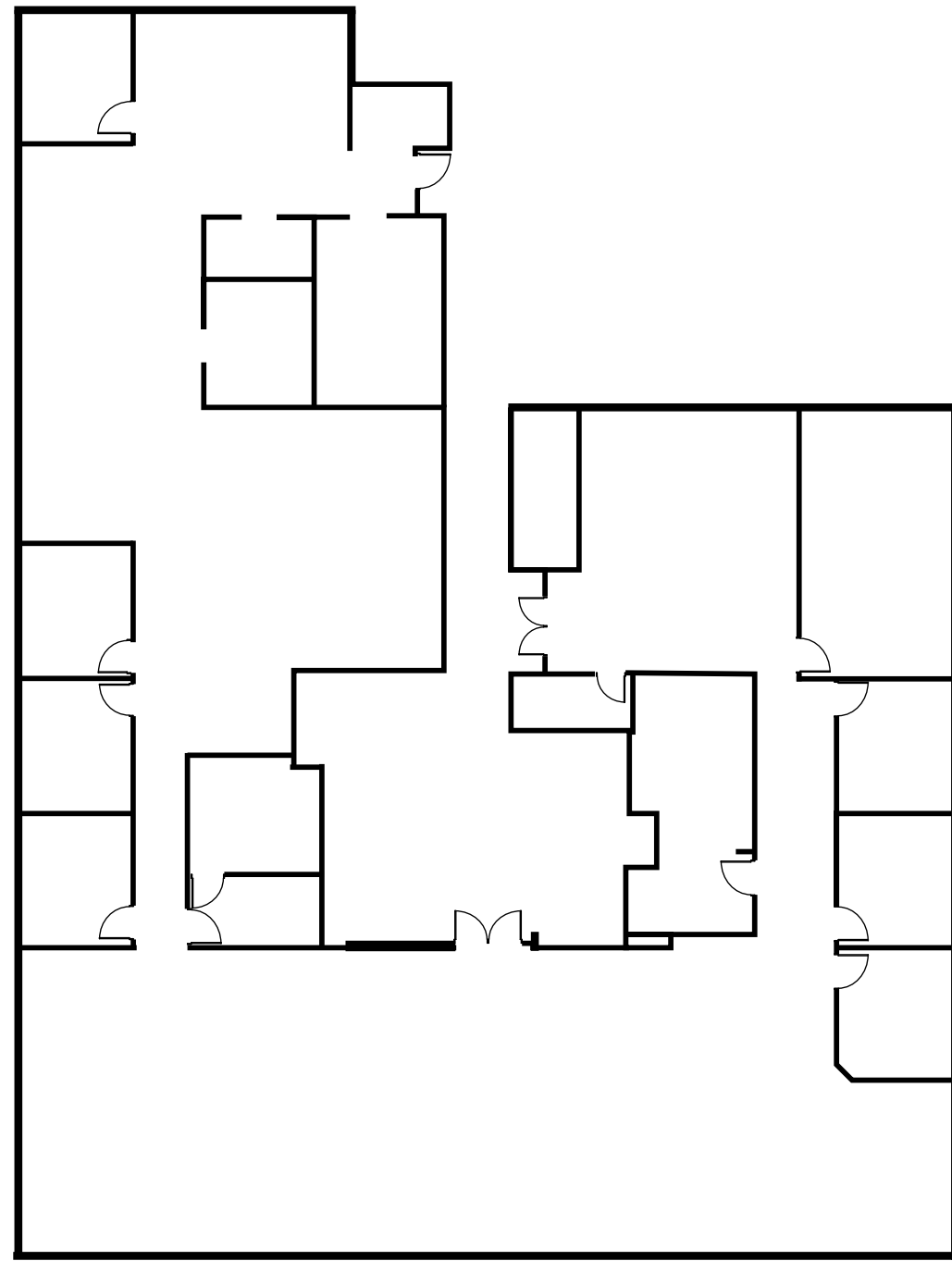
Suite 100 Available November 1, 2026

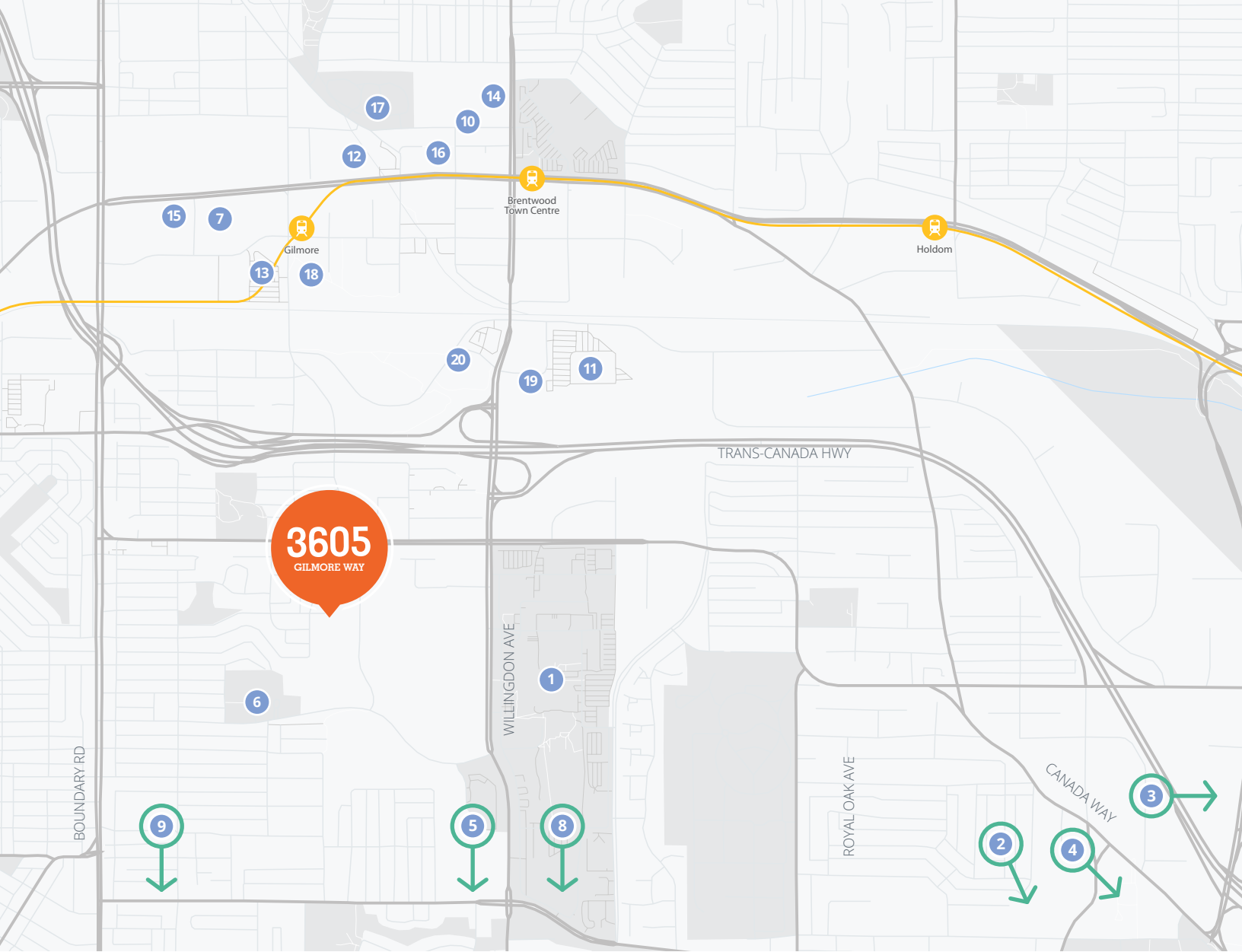
SUITE	SIZE (sf)	DESCRIPTION
1,897	9,261	Reception area, open area, office, meeting room, kitchenette, two (2) call booths with access to patio



Suite 320 Available June 1, 2027

SUITE	SIZE (sf)	DESCRIPTION
320	9,261	





- | | | | |
|---------------------------|---------------------------|-------------------------|------------------|
| 1. BCIT | 6. Burnaby Hospital | 11. Costco Wholesale | 16. JOEY Burnaby |
| 2. Deer Lake | 7. ICBC | 12. Cactus Club Cafe | 17. Staples |
| 3. Burnaby Lake | 8. Metrotown | 13. The Home Depot | 18. Starbucks |
| 4. Burnaby Village Museum | 9. Central Park | 14. Farfalla | 19. The Keg |
| 5. Burnaby Public Library | 10. Brentwood Town Centre | 15. Earls Kitchen + Bar | 20. McDonald's |

Contact us for more information

Josh Sookero*, Principal
 604.647.5091
 josh.sookero@avisonyoung.com
**Personal Real Estate Corporation*

Nicolas Bilodeau, Senior Vice President
 604.647.1336
 nicolas.bilodeau@avisonyoung.com

**AVISON
 YOUNG**

**CANADA BEST
 MANAGED
 COMPANIES**
 Platinum member

#2900-1055 West Georgia Street
 P.O. Box 11109 Royal Centre
 Vancouver, BC V6E 3P3, Canada

avisonyoung.com