

# RETAIL SPACE FOR LEASE

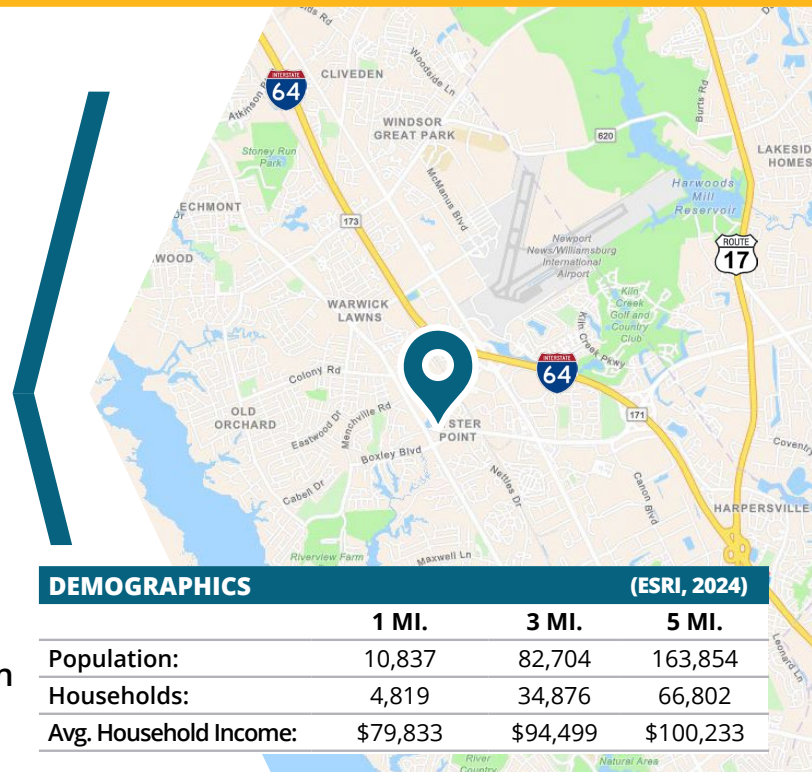
Newport News, VA

## 307 Oyster Point Road MARKETPLACE AT OYSTER POINT



### ABOUT PROPERTY

- 1,400 SF Retail Space Available Nov. 1, 2024
- Rent Negotiable
- Located at the intersection of:  
Oyster Point Road - 38,372 VPD  
Warwick Boulevard - 36,121 VPD
- Anchored by Care-A-Lot Pet Supplies  
and Planet Fitness
- Neighbors Include: Walgreens, CVS,  
Starbucks, Bonefish Grill, Sherwin Williams,  
Total Wine & More, Food Lion and Dairy Queen



	DEMOGRAPHICS (ESRI, 2024)		
	1 MI.	3 MI.	5 MI.
Population:	10,837	82,704	163,854
Households:	4,819	34,876	66,802
Avg. Household Income:	\$79,833	\$94,499	\$100,233

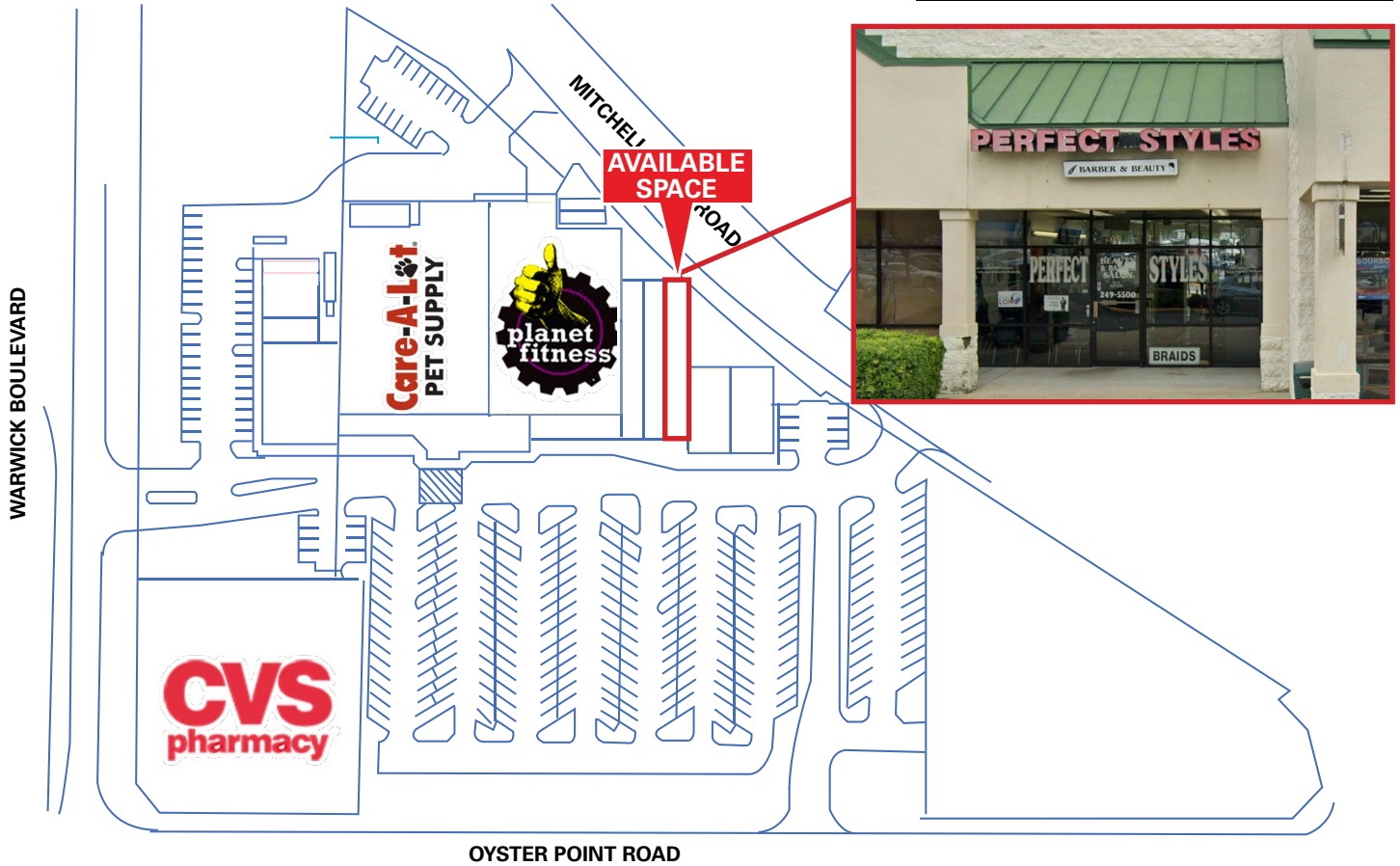
For more information:  
KIMBERLY WORLEY  
757.640.8227  
[KimberlyWorley@HarveyLindsay.com](mailto:KimberlyWorley@HarveyLindsay.com)

999 Waterside Drive • Suite 1400  
Norfolk, Virginia 23510  
757-640-8700  
[www.HarveyLindsay.com](http://www.HarveyLindsay.com)

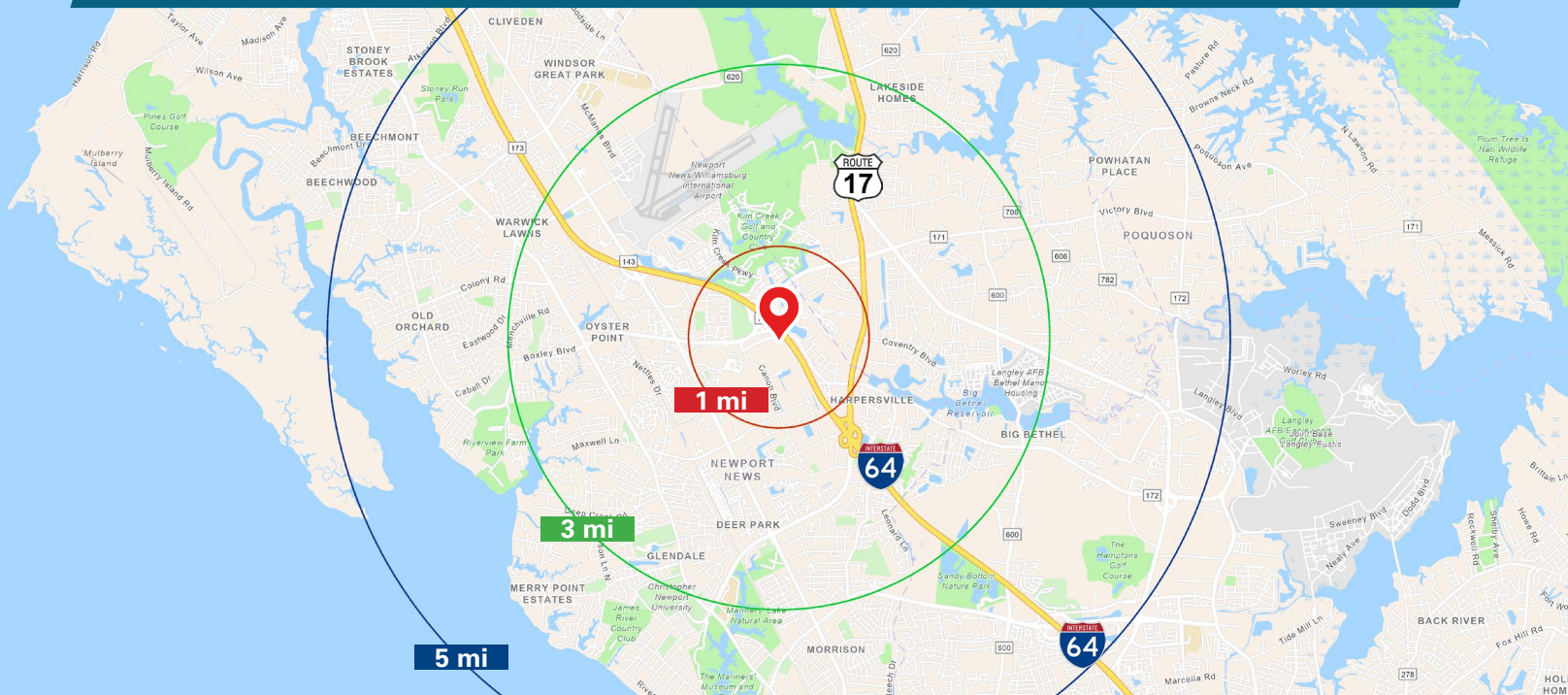
**HARVEY LINDSAY**  
COMMERCIAL REAL ESTATE

# Marketplace at Oyster Point, Newport News

## SITE PLAN MAP VIEW



The Marketplace at Oyster Point is a strong neighborhood shopping center that benefits from its location within the regional Oyster Point/Jefferson Avenue retail corridor.



For more information:  
KIMBERLY WORLEY  
757.640.8227  
[KimberlyWorley@HarveyLindsay.com](mailto:KimberlyWorley@HarveyLindsay.com)

999 Waterside Drive • Suite 1400  
Norfolk, Virginia 23510  
757-640-8700  
[www.HarveyLindsay.com](http://www.HarveyLindsay.com)

**HARVEY LINDSAY**  
COMMERCIAL REAL ESTATE