

FOR SUBLEASE

TYRONE TOWER  
1700 66TH STREET N, ST. PETERSBURG, FL 33710

# OFFICE SUBLEASE

## SUITE 504 - 4,853 SF



### HIGHLIGHTS:

- **Sublease term through April 30, 2027**
- **\$17.50 Full Service**
- Great sublease space in excellent condition
- Conveniently located in South Pinellas / Tyrone area



### For more information, please contact:

**Ryan Menendez**  
+1 813 767 6266  
RMenendez@savills.us

**Robert Teachey**  
+1 813 917 1435  
RTeachey@savills.us

[savills.us](http://savills.us)

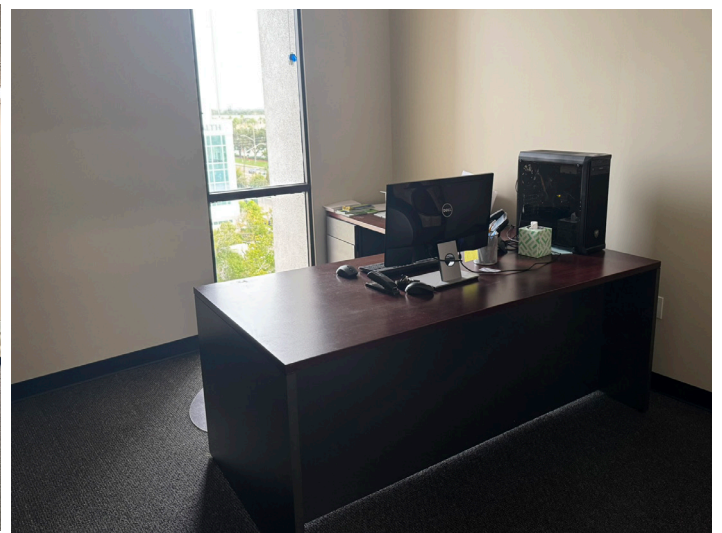
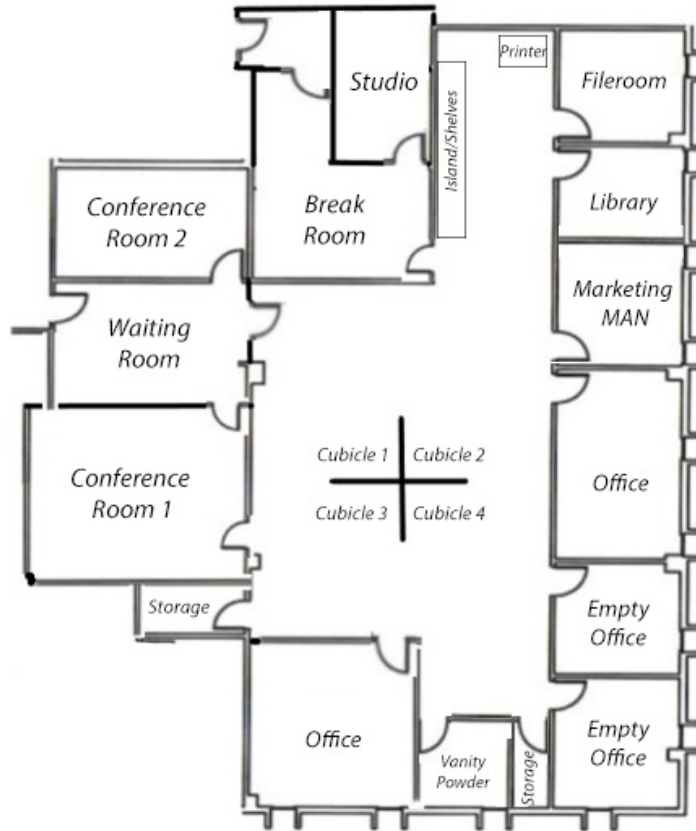


Information contained herein has been obtained from sources deemed reliable. While we believe this information to be true, Savills makes no guarantee, warranties or representations as to the completeness or accuracy thereof. All information submitted is subject to errors and/or omissions.

FOR SUBLEASE

TYRONE TOWER  
1700 66TH STREET N, ST. PETERSBURG, FL 33710

Suite 504 - 4,853 SF



**For more information, please contact:**

**Ryan Menendez**  
+1 813 767 6266  
RMenendez@savills.us

**Robert Teachey**  
+1 813 917 1435  
RTeachey@savills.us

[savills.us](http://savills.us)



Information contained herein has been obtained from sources deemed reliable. While we believe this information to be true, Savills makes no guarantee, warranties or representations as to the completeness or accuracy thereof. All information submitted is subject to errors and/or omissions.

FOR SUBLEASE

TYRONE TOWER  
1700 66TH STREET N, ST. PETERSBURG, FL 33710

Suite 504 - 4,853 SF



**For more information, please contact:**

**Ryan Menendez**  
+1 813 767 6266  
RMenendez@savills.us

**Robert Teachey**  
+1 813 917 1435  
RTeachey@savills.us

[savills.us](http://savills.us)



Information contained herein has been obtained from sources deemed reliable. While we believe this information to be true, Savills makes no guarantee, warranties or representations as to the completeness or accuracy thereof. All information submitted is subject to errors and/or omissions.