



For Lease

One City Center

11815 Fountain Way, Newport News, VA

Easy access to I-64, the Newport News/Williamsburg International Airport and Public Transportation

2,953 SF - 6,353 SF available

- Office building with first floor retail
- Free covered parking adjacent to One City Center in the Fountain Way garage
- Tenants include Regus, HII, Kaufman & Canoles, Juice Bar Café, Cure Coffeehouse
- Shopping and dining within walking distance

Copyright © 2024 Colliers International.
 Information herein has been obtained from sources deemed reliable, however its accuracy cannot be guaranteed. The user is required to conduct their own due diligence and verification.

Contact us:

Perry Frazer
 Executive Vice President
 +1 757 228 1833
 perry.frazer@colliers.com

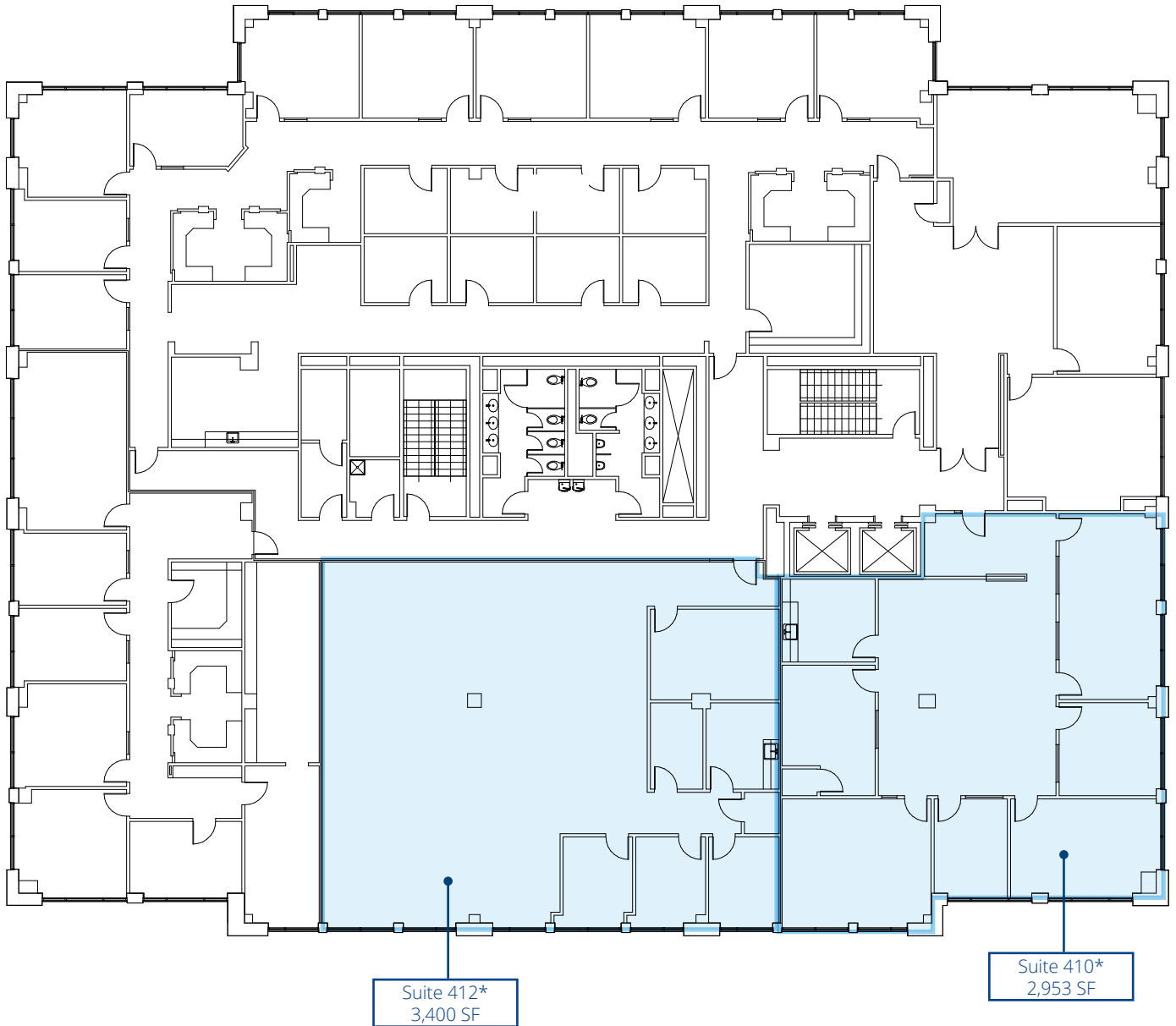
Brian Davidson
 Vice President
 +1 757 228 1809
 brian.davidson@colliers.com

Patrick McCormick
 Associate
 +1 757 213 8140
 patrick.mccormick@colliers.com

Colliers
 150 West Main St | Suite 1100
 Norfolk, VA 23510
 P: +1 757 490 3300
 colliers.com

4th Floor

***Suites 410 and 412 can be combined for 6,353 SF**



One City Center



- 1 Fountain Plaza I
- 2 Fountain Plaza II
- 3 One City Center
- 4 Two City Center
- 5 Town Center One
- 6 Merchants Walk One
- 7 Merchants Walk Two

Demographics



2024 population

87,430

(3 miles)

175,786

(5 miles)

388,640

(10 miles)

Daytime population

87,198

(3 miles)

166,027

(5 miles)

399,304

(10 miles)



2024 Average Household Income

\$100,879

(3 miles)

\$102,679

(5 miles)

\$96,769

(10 miles)

Number of households

36,106

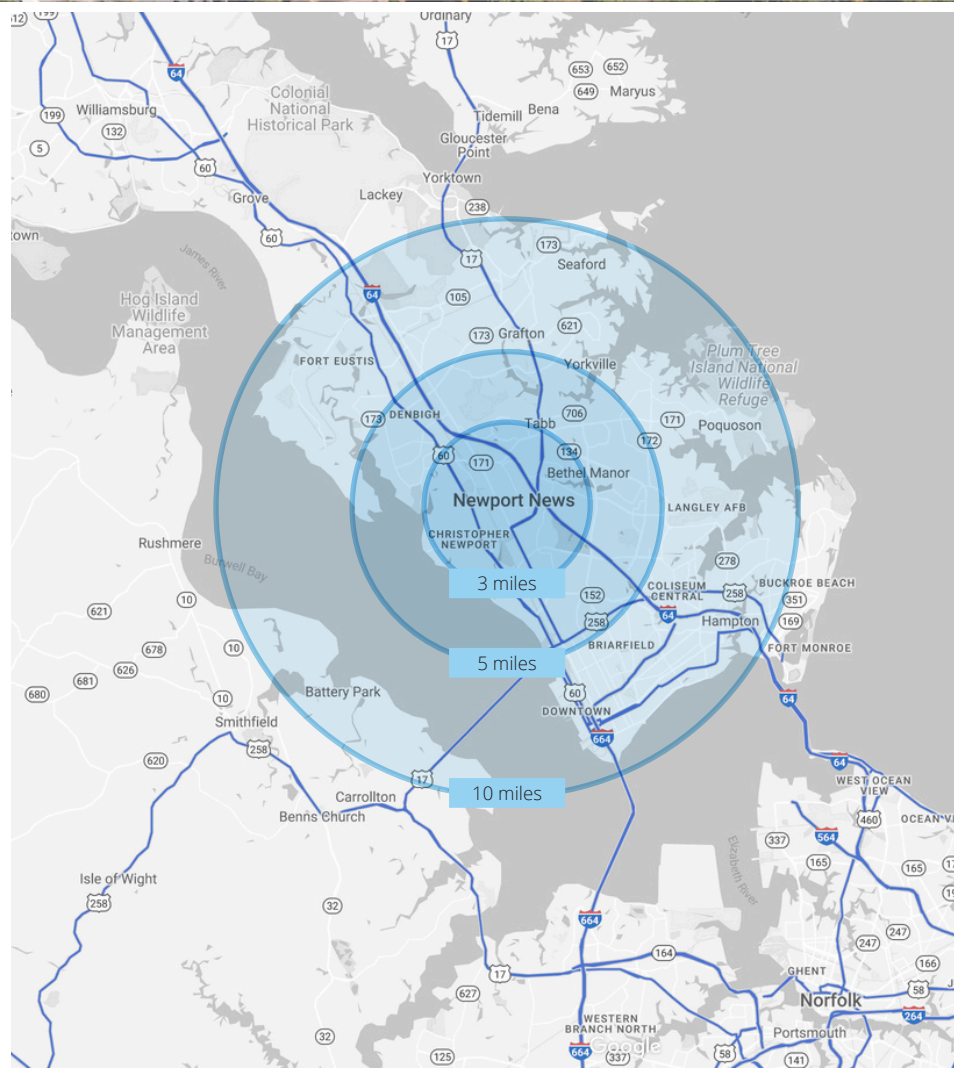
(3 miles)

73,614

(5 miles)

159,081

(10 miles)



One City Center



Contact us:

Perry Frazer

Executive Vice President
+1 757 228 1833
perry.frazer@colliers.com

Brian Davidson

Vice President
+1 757 228 1809
brian.davidson@colliers.com

Patrick McCormick

Associate
+1 757 213 8140
patrick.mccormick@colliers.com

Colliers

150 West Main St | Suite 1100
Norfolk, VA 23510
P: +1 757 490 3300