



#210  
205,663 SF  
Available

#199  
10,234 SF  
Available

#200  
520,450 SF  
Available

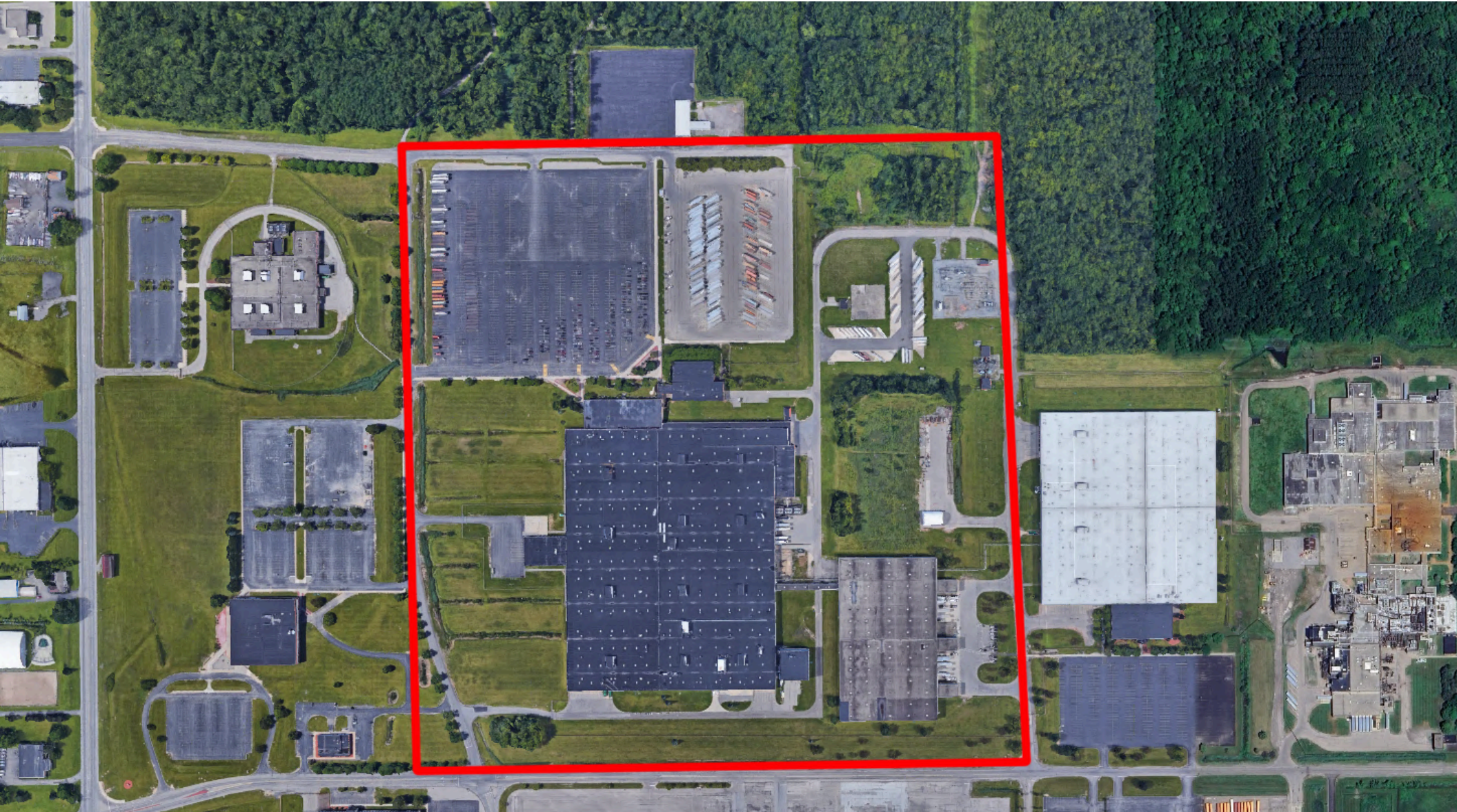
#334  
28,000 SF  
Available

*Available For Lease*  
**700 Resende Rd,  
Webster, NY 14580**



# PROPERTY SUMMARY & PARCEL OUTLINE

This ±754,113 SF industrial facility, located within the former Xerox campus in Rochester, NY, offers a high-functioning warehouse environment ideal for large-scale distribution, manufacturing, or logistics users. The property features 16'–26' clear heights, heavy power, wide column spacing, 35 dock doors (ranging from 8'x10' to 10'x10'), and one 12'x18' grade-level door, all within Industrial zoning. Strategically positioned just 1 mile from the Route 104 ramp, the site provides convenient access to major corridors including I-590 (11 miles) and I-490 (13 miles), while also benefiting from on-campus rail access to enhance distribution capabilities. Landlord is offering a Tenant Improvement (TI) allowance, making this a strong opportunity for users seeking scale, flexibility, and connectivity in the Rochester industrial market.



# Property Details & Specifications

**Address:** 700 Resende Rd, Webster, NY 14580

**Type:** Industrial Warehouse

**Total SF:** 754,113

**Warehouse SF:** 515,684

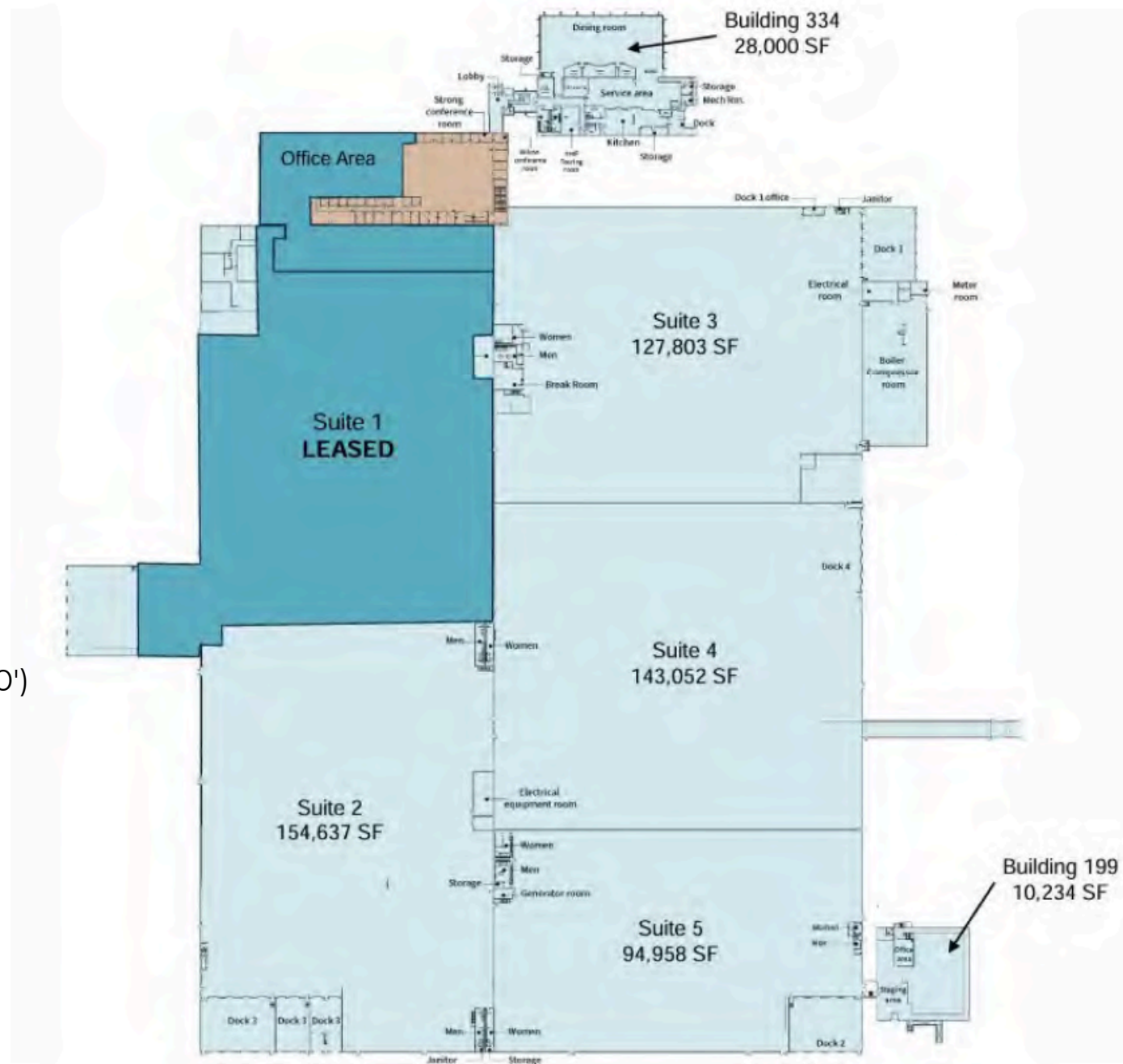
**Office SF:** 43,000

**Dock Doors:** 35 (Ranging 8'x10' - 10'x10')

**Drive In Doors:** 1 (12'x18')

**Zoning:** Industrial

**Clear Height:** 16'-26'



# Additional Building Information

**Total SF:** 205,663 sq ft

**Warehouse:** 196,663 sq ft

**Office:** 9,000 sq ft

**HVAC:** Gas fired Boilers/Ceiling Hung Units

**Minimum Space Available:** Negotiable

**Column Spacing:** 40' X 60' Throughout

**Electrical:** Heavy Power Supplied by Rochester Gas & Electric, 480V/3- phase-12,500KVA Service

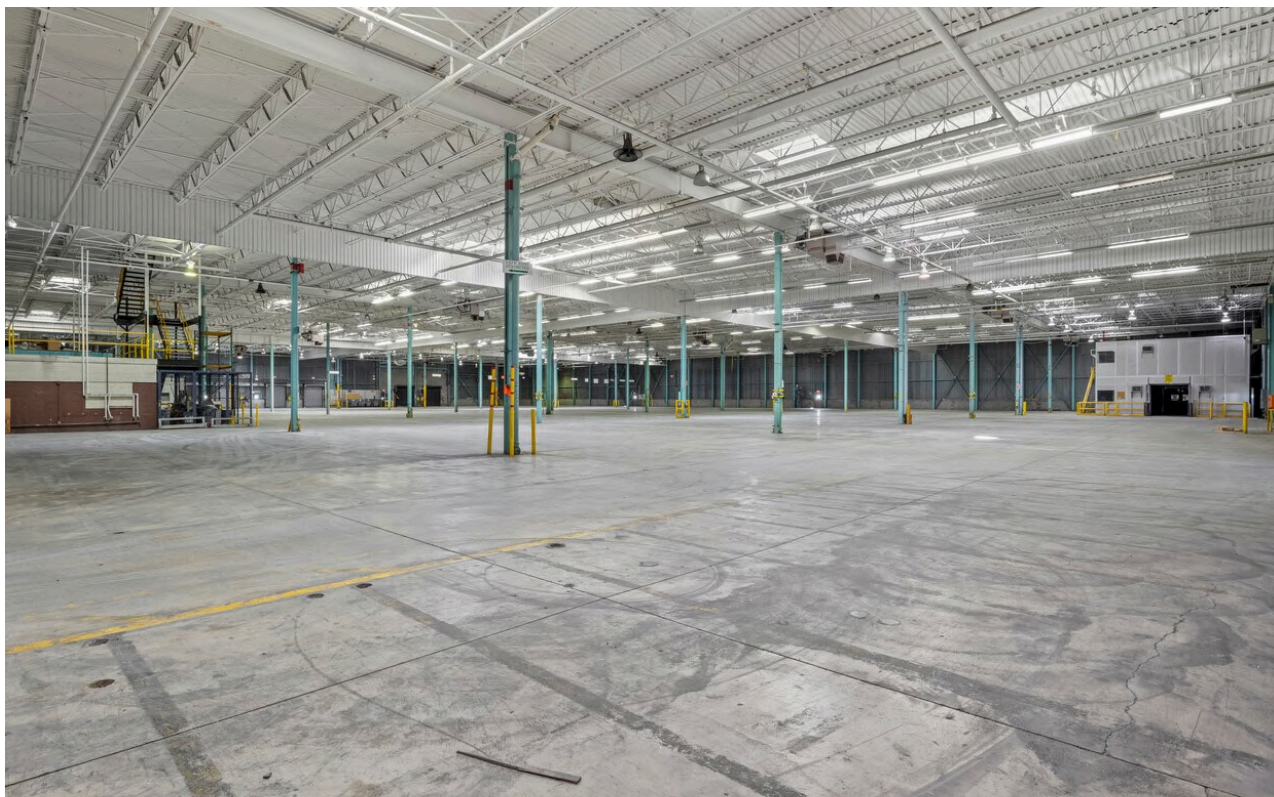
**Sprinkler System:** Yes (Wet System)

**Type Of Roof:** EPDM

**Rail Access:** On Campus

**Flooring:** 8" Concrete Slab

**Parking:** 20 acres paved and striped



# PRIME INDUSTRIAL LOCATION - ROCHESTER, NY

**700 Resende Road** is strategically positioned within the highly desirable Webster industrial corridor, offering strong connectivity to the Greater Rochester market and key regional transportation networks. The property benefits from immediate proximity to Route 104, with convenient access to I-490 and I-590, enabling efficient east-west and north-south distribution throughout Rochester and the broader Upstate New York region. Located just minutes from major employment centers, established industrial parks, and dense residential communities, the site supports strong labor accessibility and operational efficiency. The property is well-suited for warehousing, light manufacturing, service operations, and regional distribution, providing a functional and well-connected industrial location within one of Western New York's most active submarkets.

## LOCATION KEY DISTANCES

Route 104: 1.0 mile

I-590: 6.5 miles

I-490: 8.0 miles

Rochester International Airport: 15 miles





# Jonathan Lasala



Senior Vice President of Brokerage



(315) 882-7531



Jlasala@IronHornEnterprises.com



# Joseph Lauro



Senior Vice President of Acquisitions



(315) 317-9760



Joseph@IronHornEnterprises.com

*Available For Lease*  
**700 Resende Rd,  
Webster, NY 14580**

