



OFFICE SPACE FOR LEASE | FULL FLOOR 4,413 RSF

145 TREMONT STREET

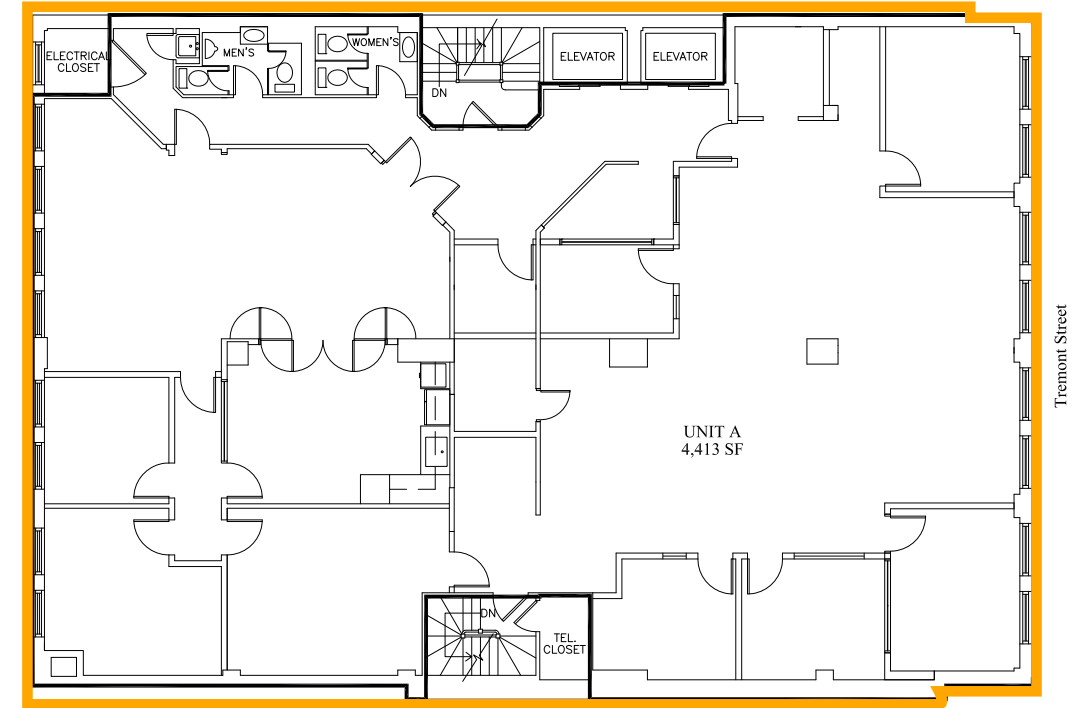
Boston, Massachusetts

145 TREMONT STREET

Boston, Massachusetts



6th Floor | 4,413 SF



BUILDING SPECIFICATIONS

AVAILABLE SF: 6th Floor - 4,413 SF

PROPERTY TYPE: Office

YEAR BUILT: 1929, Renovated 2020

PRICING: Negotiable

BUILDING FEATURES

- 145 Tremont offers modern conveniences including two new elevators (cabs & mechanicals) and new building wide HVAC system.
- Immediate access to the Park Street Red and Green Lines.
- Conveniently located near the Boston Common Garage.
- Incredible views overlooking Boston Common and the State House.



145 TREMONT STREET

Boston, Massachusetts



>1 MIN. WALK

IMMEDIATE ACCESS TO DOWNTOWN
CROSSING & PARK STREET STATION

(Red, Orange, & Green lines)

0.7 MILES

SOUTH STATION MBTA

(Red Line, Commuter Rail, Amtrak, Acela)

WALKING DISTANCE TO PARKING

Boston Commons Garage

DIVERSE SELECTION OF FOOD OPTIONS IN IMMEDIATE AREA

CONTACT US TO ARRANGE A TOUR

PETER BEAN

781.771.7715

pbean@hunnemanre.com

PETER EVANS

617.457.3402

pevans@hunnemanre.com

BRIAN FOLEY

617.457.3311

bfoley@hunnemanre.com



303 Congress Street, Boston, MA 02210 | 617.457.3400 | www.hunnemanre.com

@2025 Hunneman. All rights reserved. All information has been obtained from sources believed reliable but no warranty or representation is verified for accuracy or completeness. Caution and independent investigation of property and information should be verified. Reliance on this information is at your own risk.