

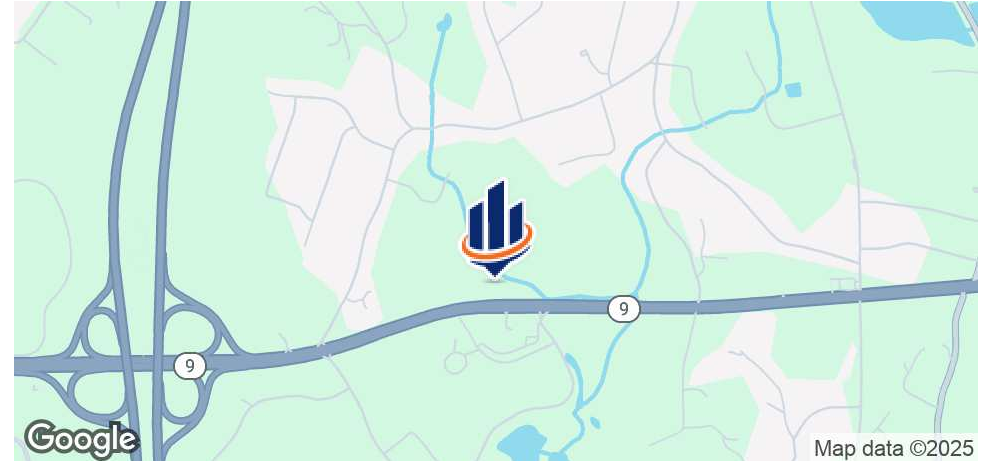


SOUTHBOROUGH BUSINESS CENTER

333 TURNPIKE ROAD, SOUTHBOROUGH, MA
SOUTHBOROUGH, MA 01722

Garrett Quinn
Assistant Managing Director -
Brokerage
508.271.9229
gquinn@parsonscre.com

Property Summary



OFFERING SUMMARY

Available SF: 4,488 SF

Lease Rate: Negotiable

Lot Size: 5 Acres

Building Size: 37,402

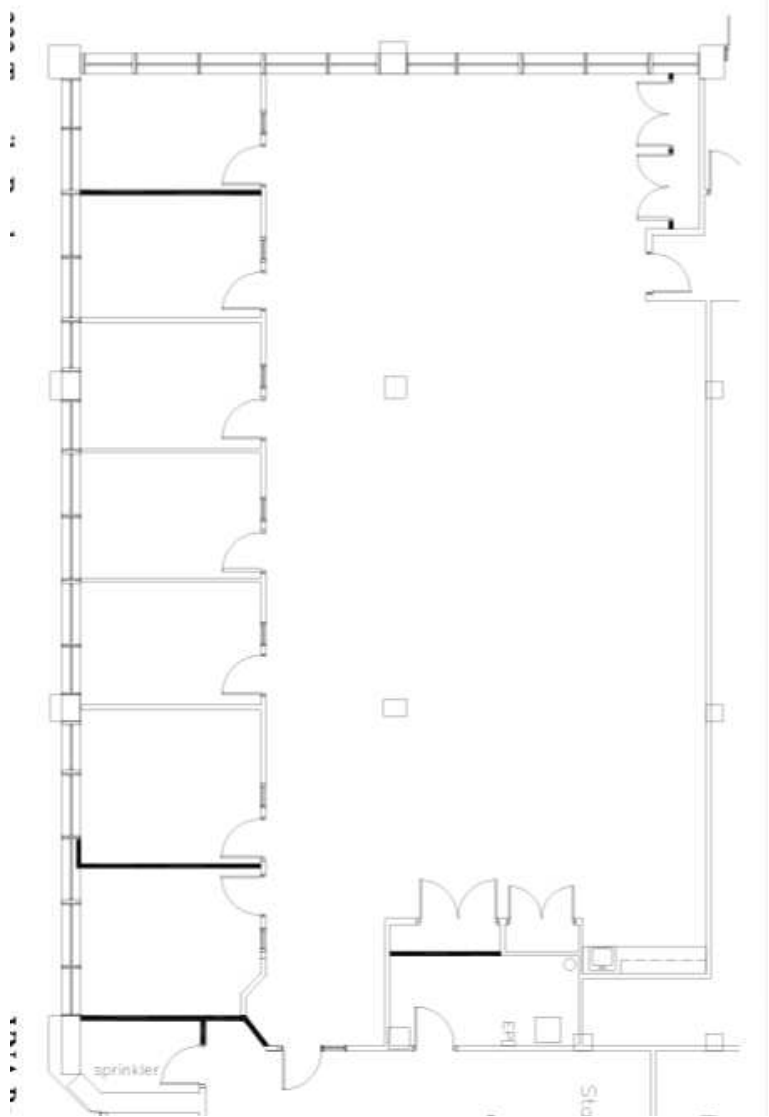
PROPERTY HIGHLIGHTS

- The Southborough Business Center is a Class A office building situated on the west bound side of Rt. 9 in Southborough, just minutes away from I-495 and the Mass Pike [I-90].
- First Class Suburban Office Space
- First Floor Space
- Many dining, hospitality and shopping options in town
- Pylon signage on Route 9
- Convenient access to downtown Boston [35 minutes away]
- Professionally managed
- Attractive window line

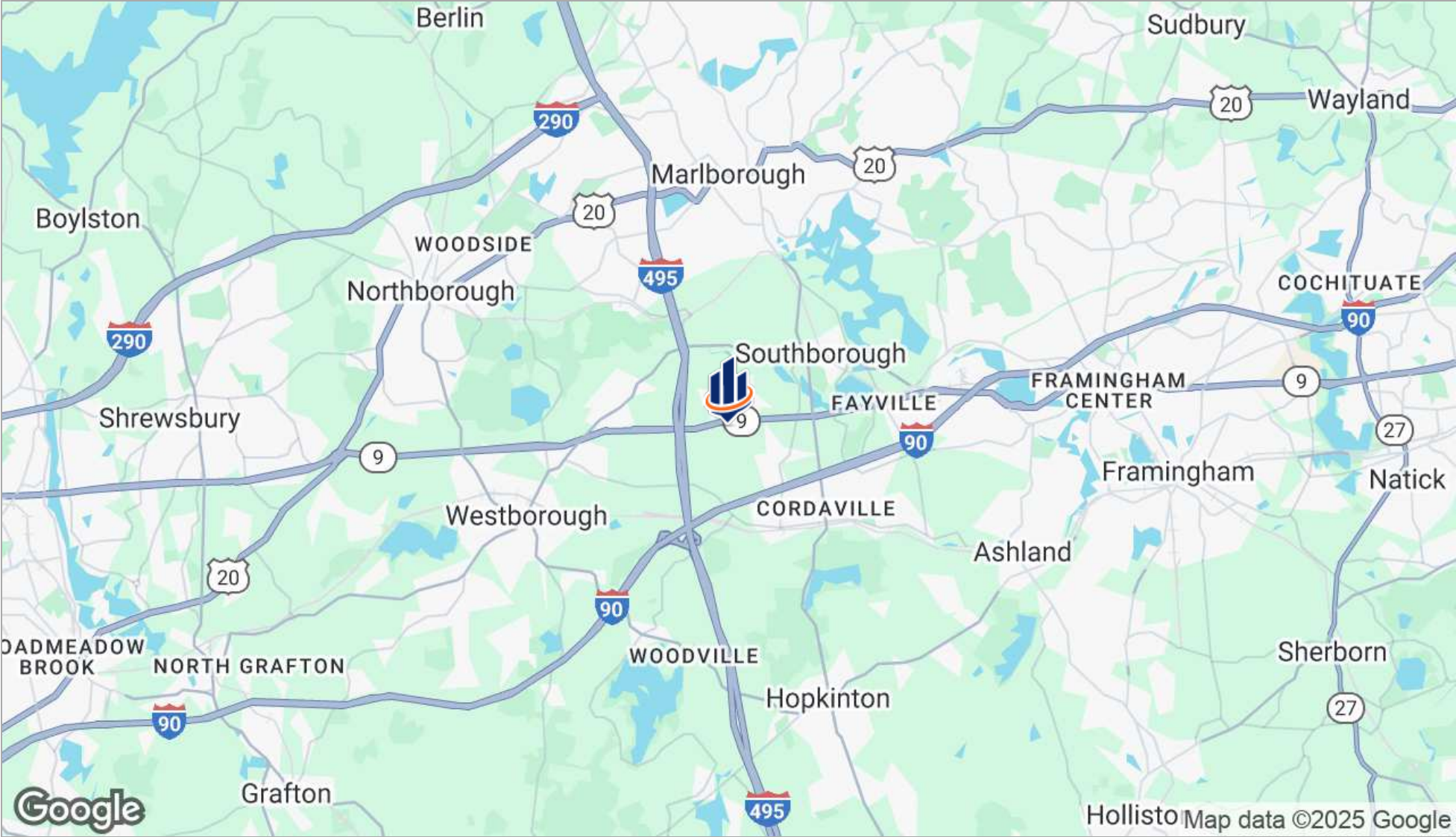
Additional Photos



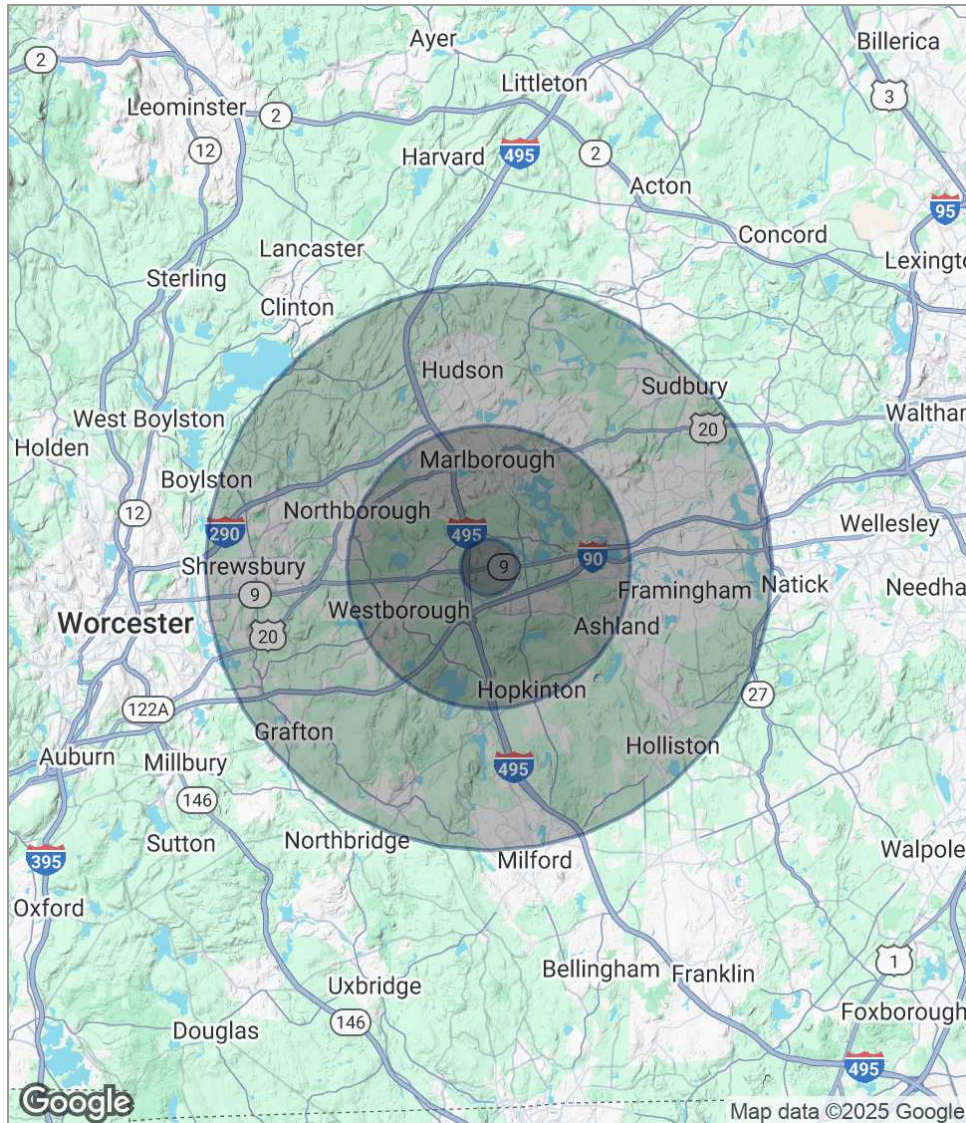
Floor Plans



Location Maps



Demographics Map



POPULATION

	1 MILE	5 MILES	10 MILES
Total population	2,010	73,179	306,267
Median age	39.1	39.5	39.5
Median age (male)	38.4	38.9	38.9
Median age (Female)	39.7	40.4	40.3

HOUSEHOLDS & INCOME

	1 MILE	5 MILES	10 MILES
Total households	664	28,303	115,645
# of persons per HH	3.0	2.6	2.6
Average HH income	\$177,370	\$111,745	\$108,050
Average house value	\$598,680	\$436,502	\$431,149

* Demographic data derived from 2020 ACS - US Census