

# SWC VICTORY BLVD & CANOGA AVE WOODLAND HILLS, CA



● ● ● ±29,825 SF Anchor Space Available



# PROPERTY HIGHLIGHTS

- ▶ ±29,825 SF Anchor Space Available
- ▶ "A" Trade Area & Center
- ▶ 200,000 SF Shopping Center anchored by Nordstrom Rack and Bloomingdale's The Outlet Store
- ▶ Across the street from the Westfield Topanga Mall, Village at Topanga and Costco
- ▶ Ample surface parking
- ▶ Approximately 3.9 million visits to the center in the last 12 months (\*Source, Placer.ai)
- ▶ Traffic Counts:  
 Victory Blvd @ Canoga Ave: 35,361 CPD  
 Canoga Ave @ Victory Blvd: 31,954 CPD



## Estimated Population

1 Mile	3 miles	5 Miles
40,590	218,510	418,250

## Avg. Household Income

1 Mile	3 miles	5 Miles
\$117,564	\$143,020	\$151,140

## Total Employees

1 Mile	3 miles	5 Miles
40,707	107,799	222,203

**CO-TENANTS:**

**AREA RETAILERS:**

# AERIAL



WARNER  
CENTER  
OFFICE

LA FITNESS  
NORDSTROM  
rack  
bloomingdales  
the outlet store

Office  
DEPOT

amazon  
fresh

Topanga Village

Crate &  
Barrel

COSTCO  
WHOLESALE

Westfield  
Topanga

BEST  
BUY  
ROGER DUNN  
GOLF SHOPS

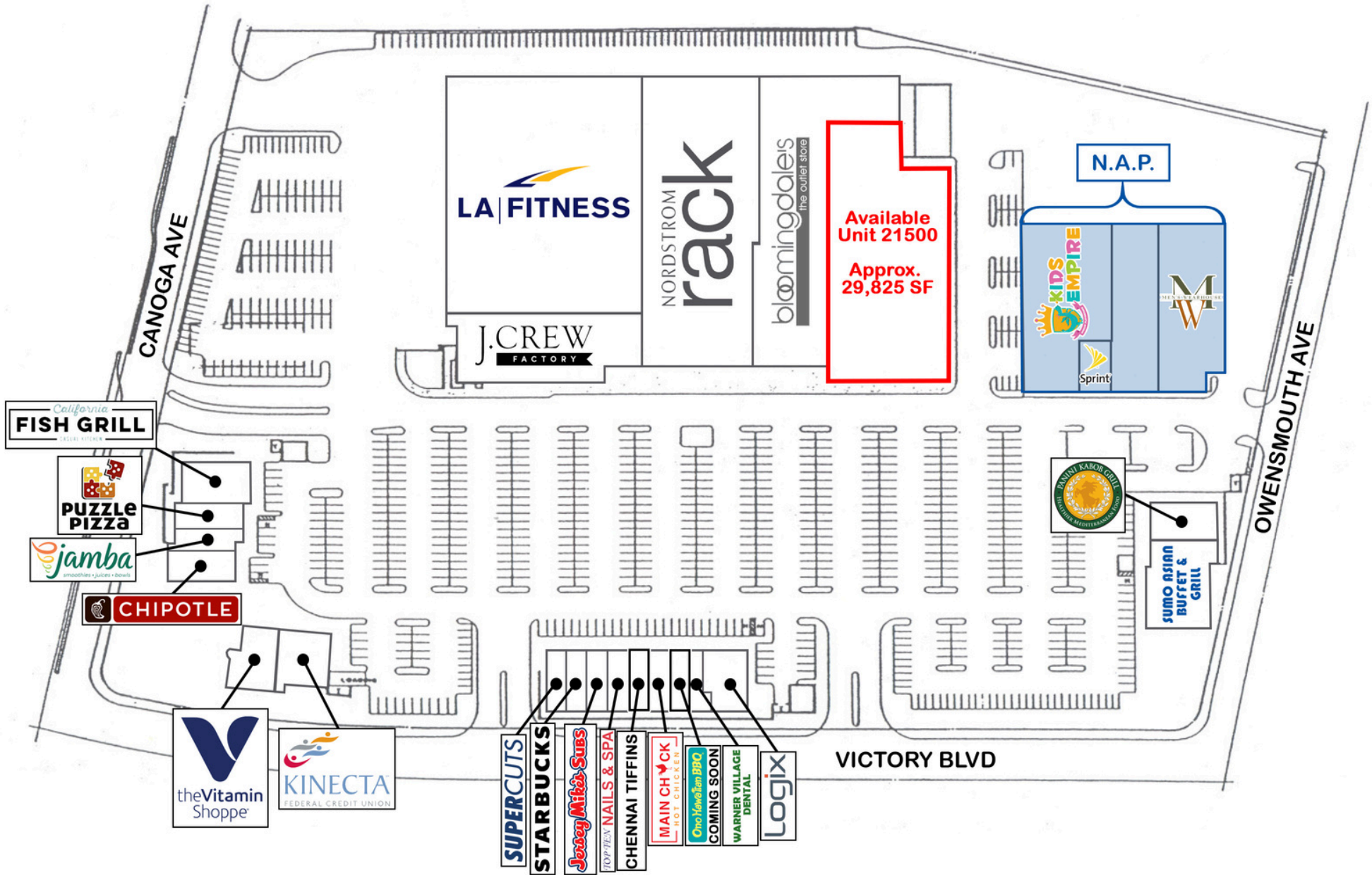
BJ's

CANOGA AVE 31,954 CPD

VICTORY BLVD 35,361 CPD

ULTA  
BEAUTY

# SITE PLAN



California  
**FISH GRILL**  
CASUAL STEAKS

**PUZZLE PIZZA**

**jamba**  
smoothies • juices • bowls

**CHIPOTLE**

**theVitamin Shoppe**

**KINECTA**  
FEDERAL CREDIT UNION

**SUPERCUTS**

**STARBUCKS**

**Jersey Mike's Subs**

**TOP-TEX NAILS & SPA**

**CHENNAI TIFFINS**

**MAIN CHICK**  
HOT CHICKEN

**Ohio Newborn BBQ**

**COMING SOON**  
WARNER VILLAGE DENTAL

**Logix**

VICTORY BLVD

CANOGA AVE

OWENSMOUTH AVE

**LA FITNESS**

NORDSTROM  
**rack**

**bloomingdale's**  
the outlet store

**J.CREW**  
FACTORY

Available Unit 21500  
Approx. 29,825 SF

N.A.P.

**KIDS EMPIRE**

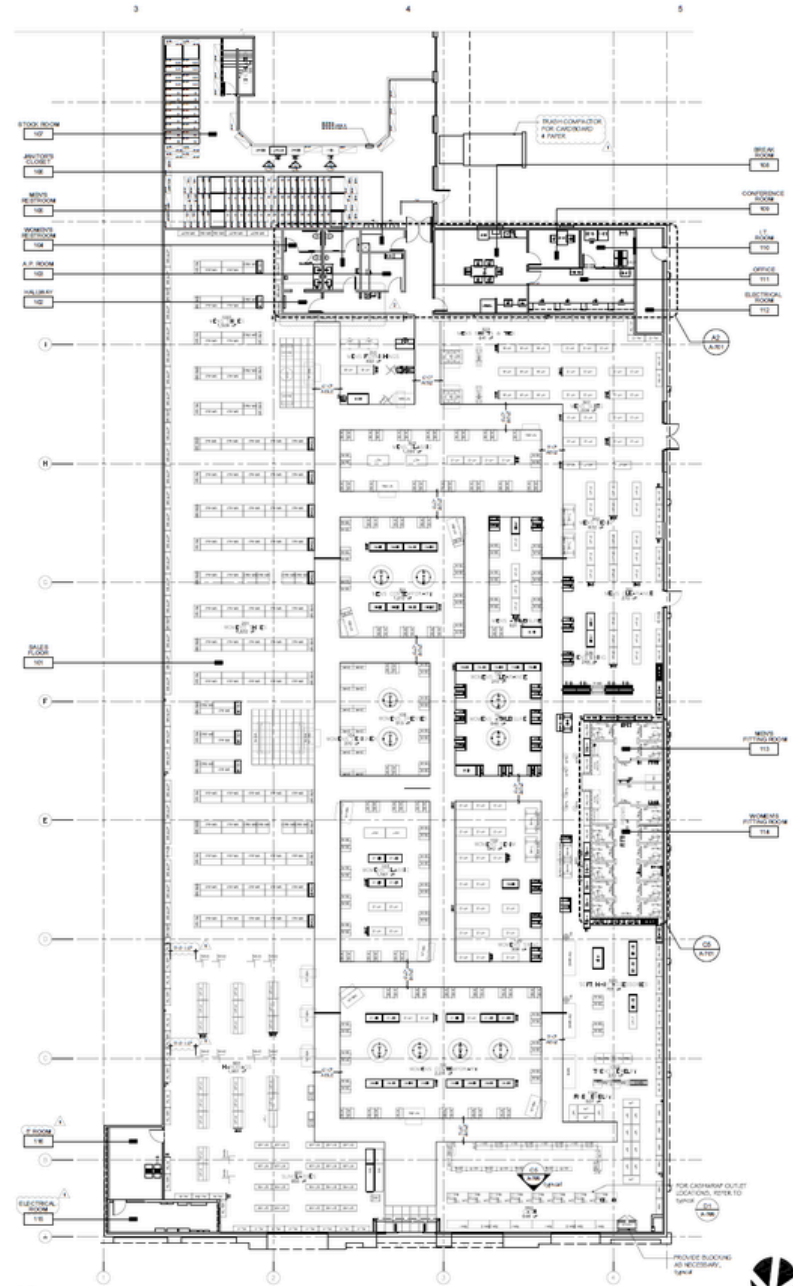
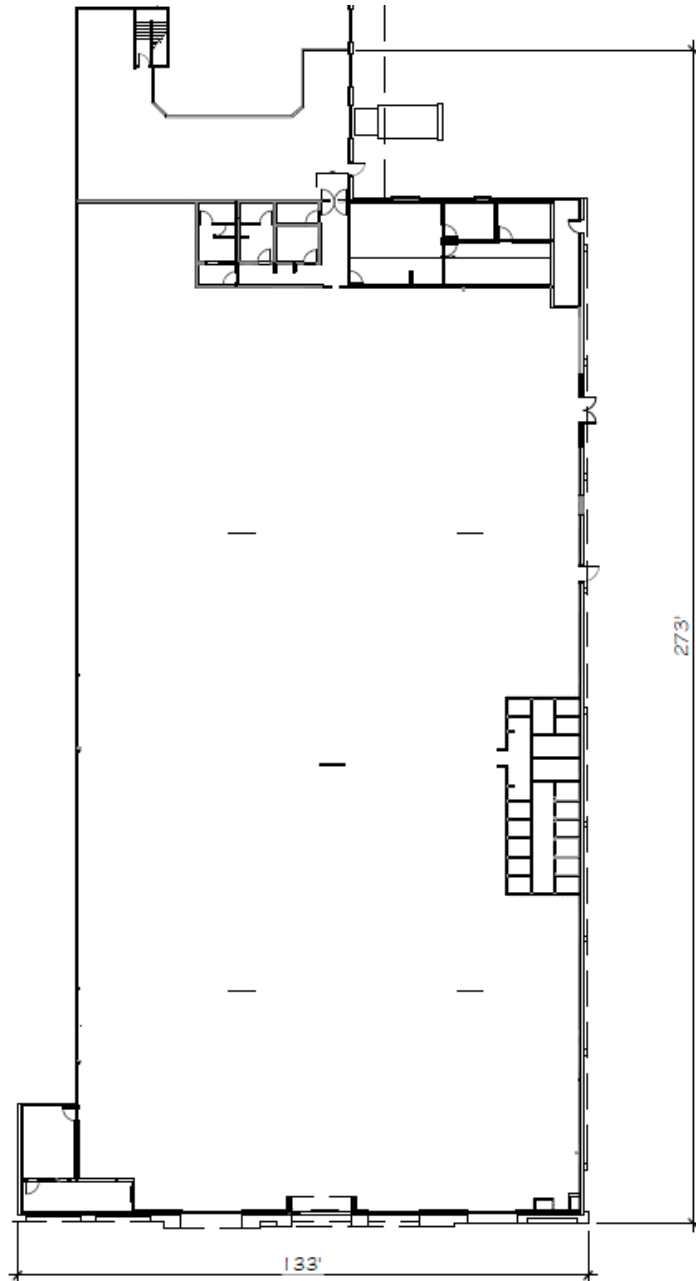
**M**

Sprint

**PRASIN KAROR GILL**  
INDIAN MEDITERRANEAN

**SUMO ASIAN**  
BUFFET & GRILL

# SPACE PLANS - 21500



A3 FIXTURE PLAN



# CONTACT US



**Matt Haas**

Vice President

805.449.1804 ext.106

[mhaas@cypressretail.net](mailto:mhaas@cypressretail.net)

License No. 01970296

**Bob Haas**

Co-Founding Principal

805.449.1804 ext.103

[rhaas@cypressretail.net](mailto:rhaas@cypressretail.net)

License No. 00870324

**Anna-Kay Earle**

Associate Broker

805.449.1804 ext.107

[aearle@cypressretail.net](mailto:aearle@cypressretail.net)

License No. 02241530

**North Office**

4035 E Thousand Oaks Blvd Suite 230  
Westlake Village, CA 91362

[www.cypress.net](http://www.cypress.net)

**NORTH OFFICE**

**SOUTH OFFICE**

The information provided herein is intended as a general depiction of the property and is subject to change. This information has been obtained by sources deemed reliable. The information has not been independently verified and Cypress Retail Group and its agents do not warrant or represent that the information provided is accurate. Individuals are solely responsible for verifying information related to the property and its suitability for the individual's use.