

AVISON
YOUNG

65

FRANKLIN
STREET

FOR LEASE

2nd floor: 4,535 RSF

ABUNDANCE OF
NATURAL LIGHT



HIGH CEILINGS



RENOVATED LOBBY
& ELEVATOR



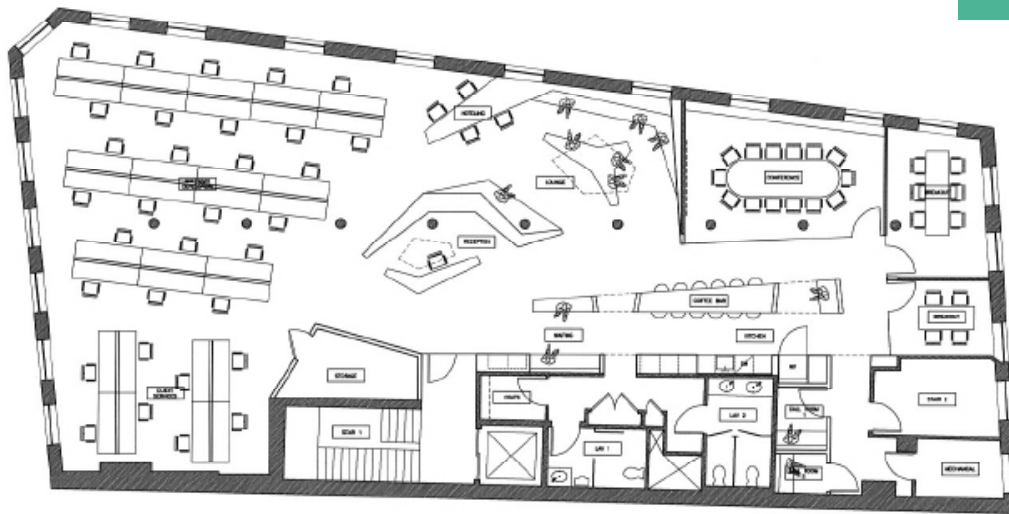


65 FRANKLIN STREET

is well-located in Downtown Crossing next to the new Millennium Tower in proximity to numerous dining and retail amenities, as well as the MBTA Orange and Red lines.

The building features high ceilings and an excellent window line, with lobby and elevator upgrades recently completed.

Floor plan



Justin Dziama, Principal
617.366.1004
justin.dziama@avisonyoung.com

© 2025. Avison Young. Information contained herein was obtained from sources deemed reliable and, while thought to be correct, have not been verified. Avison Young does not guarantee the accuracy or completeness of the information presented, nor assumes any responsibility or liability for any errors or omissions therein.

