

YOUR FUTURE OFFICE



Leasing Opportunity at

Eau Claire Tower

Suite Details:

Tower
Eau Claire
Suite Number
810

Square Footage
13,993

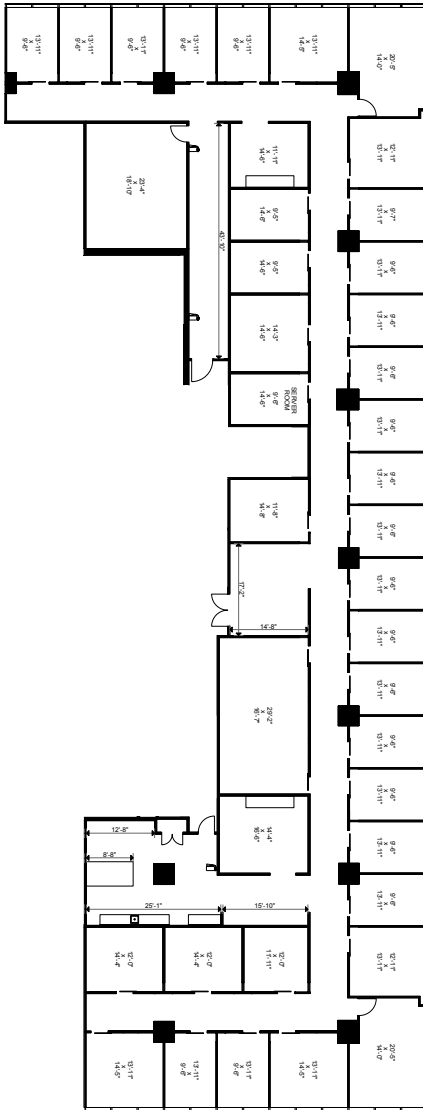
Further Information
[Eau Claire Tower's Webpage](#)

Website

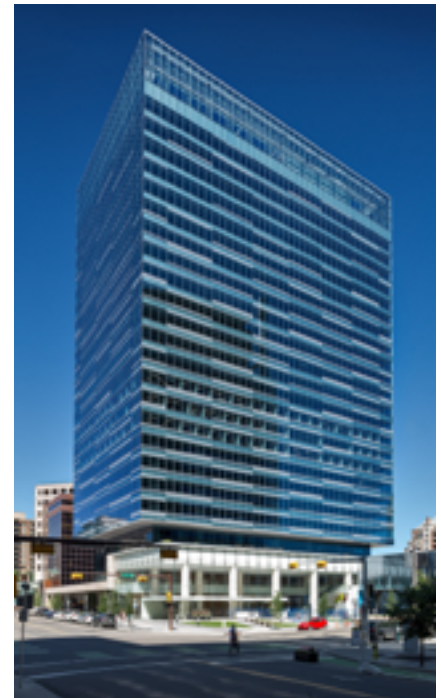
[OxfordProperties.com](#)

Suite Description

- Reception
- Meeting rooms
- Boardroom
- 35 Offices
- Staff bistro
- Filing room



Plan View of Your Suite,
Suite 810, Eau Claire Tower



Your Office Tower

A workplace experience

designed for the way
you live



7:00 AM

Get energized with a morning workout in our convenient on-site fitness centre



8:15 AM

Fuel your morning with a steaming Good Earth brew, then let the creative juices flow in your clean, bright workspace



12:00 PM

Grab lunch from our extensive food court and relax in our exclusive tenant lounge



3:00 PM

Take a mid-afternoon break and grab a bike from our Borrow-A-Bike Program and cruise around Prince's Island Park



4:30 PM

Sweat the day out at our convenient on-site fitness centre and freshen up in our shower facilities before heading out for the night

Eau Claire Tower

Curated for work and life

OXFORD